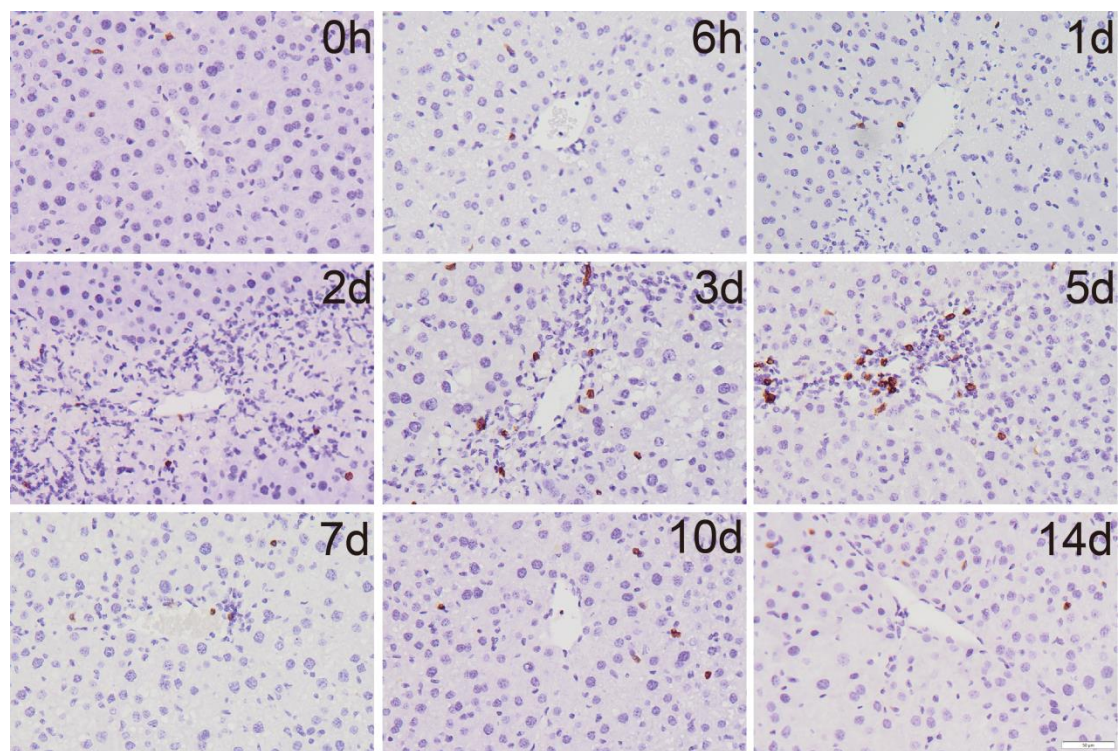
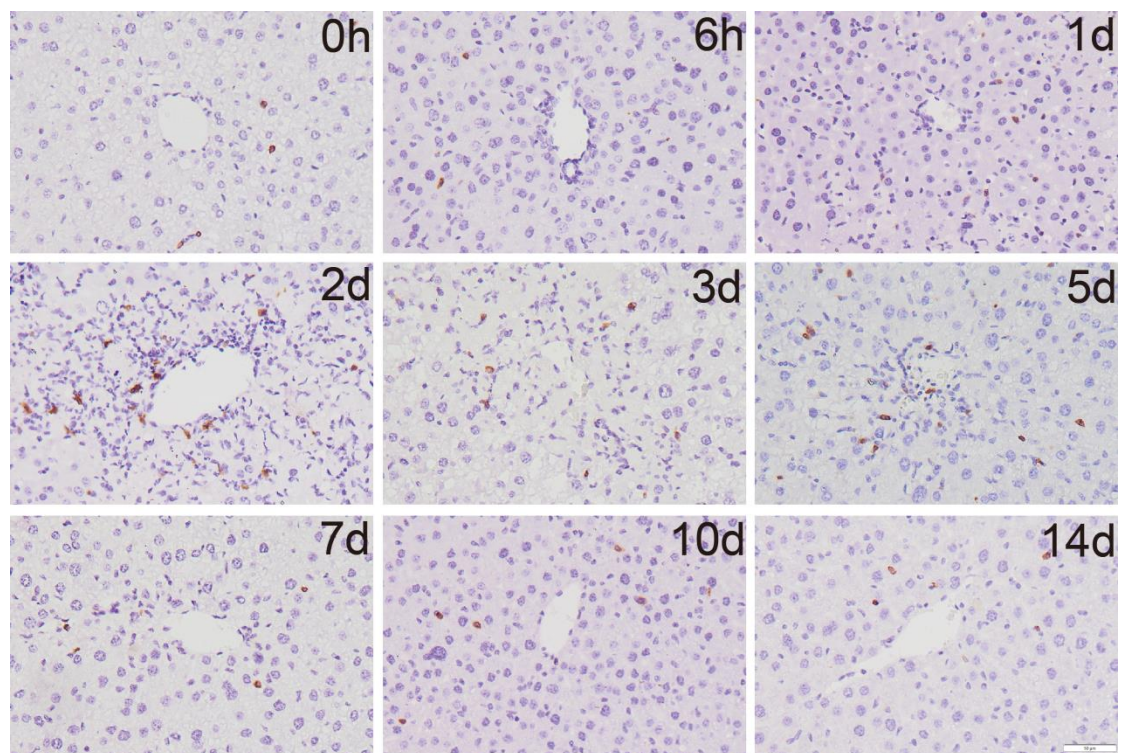


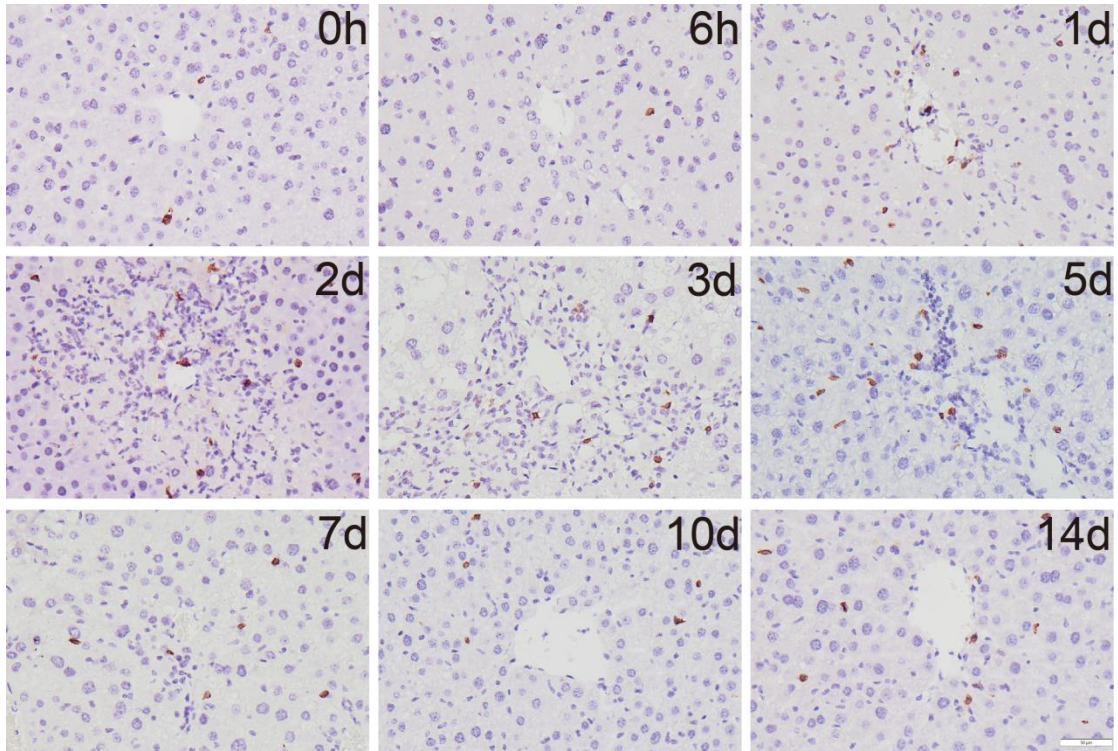
Supplementary Figure 1 Representative images of neutrophils in the livers of CCl₄-treated wild-type mice. Scale bar: 50 μ m.



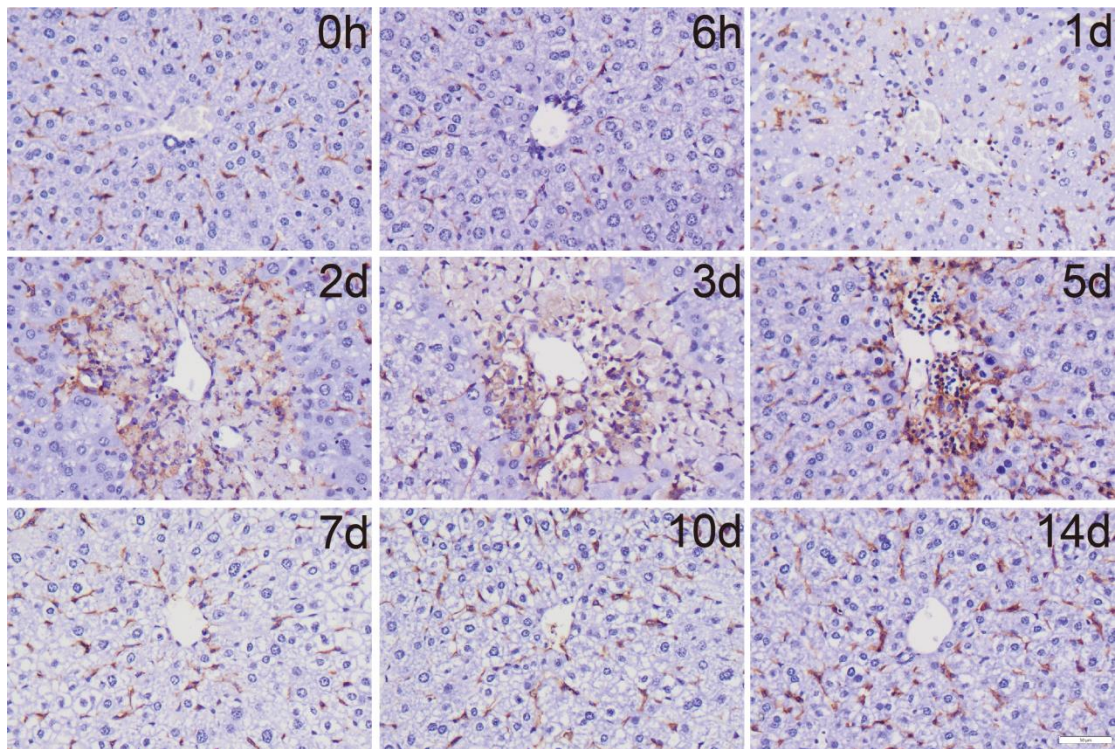
Supplementary Figure 2 Representative images of NK/NKT cells in the livers of CCl₄-treated wild-type mice. Scale bar: 50 μ m.



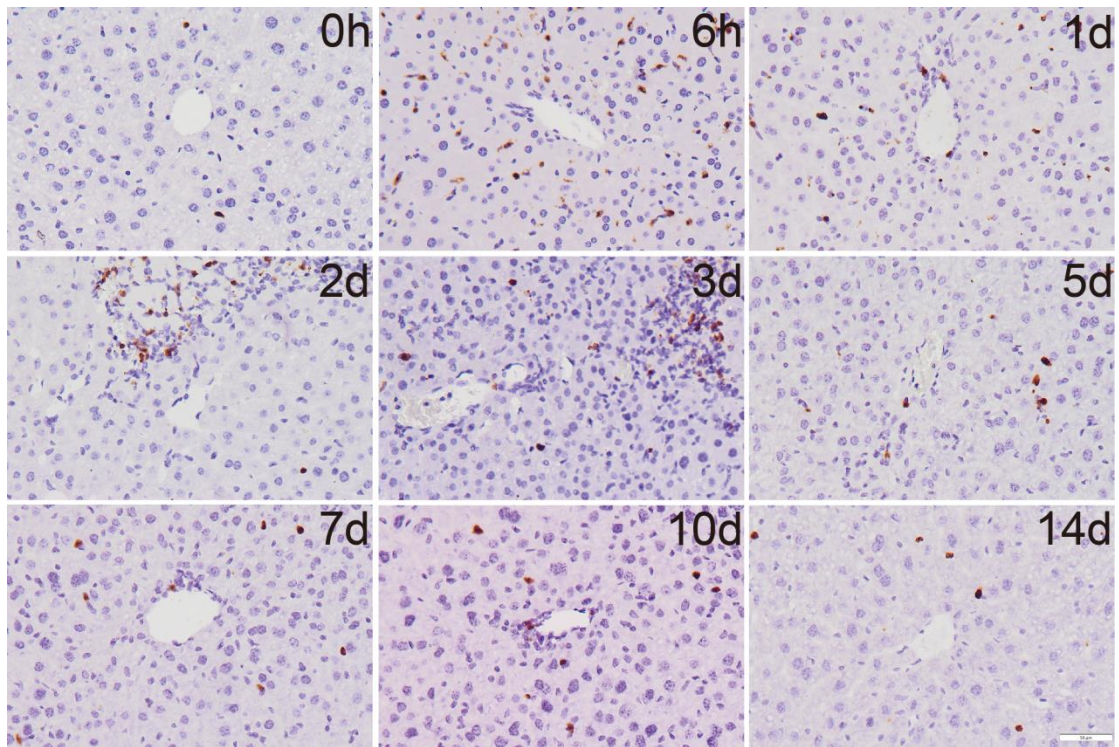
Supplementary Figure 3 Representative images of CD4⁺ T cells in the livers of CCl₄-treated wild-type mice. Scale bar: 50 μ m.



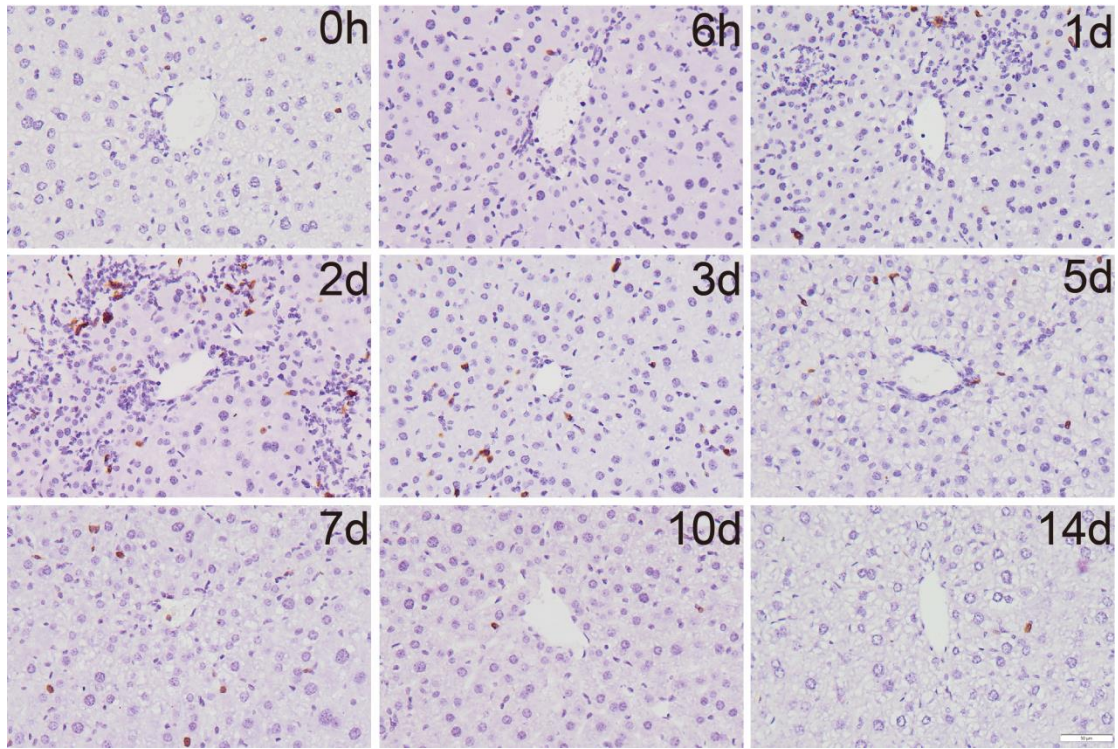
Supplementary Figure 4 Representative images of CD8⁺ T cells in the livers of CCl₄-treated wild-type mice. Scale bar: 50 μm.



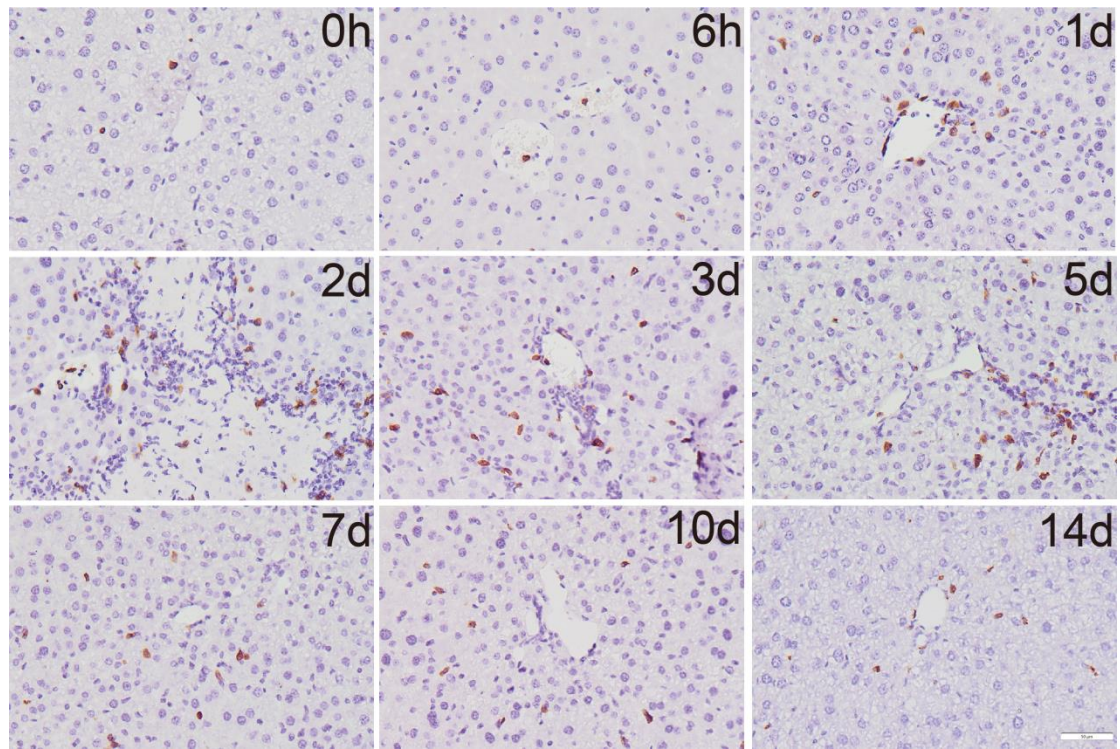
Supplementary Figure 5 Representative images of macrophages in the livers of CCl₄-treated wild-type mice. Scale bar: 50 μ m.



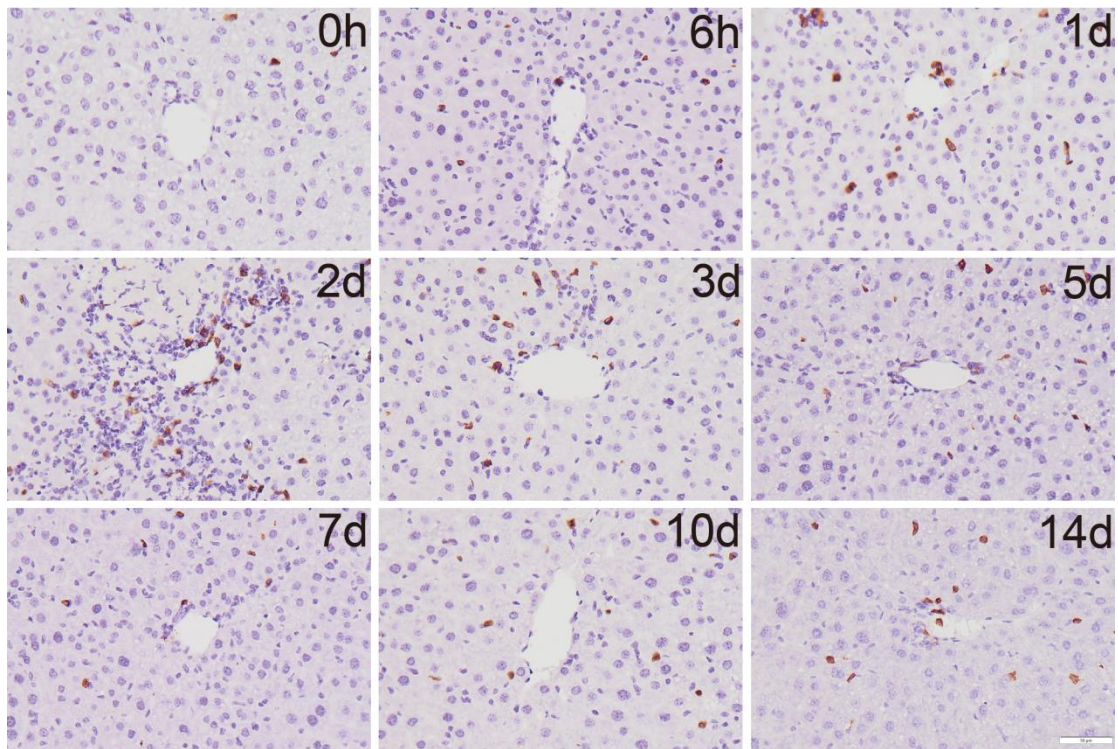
Supplementary Figure 6 Representative images of neutrophils in the livers of ConA-treated wild-type mice. Scale bar: 50 μ m.



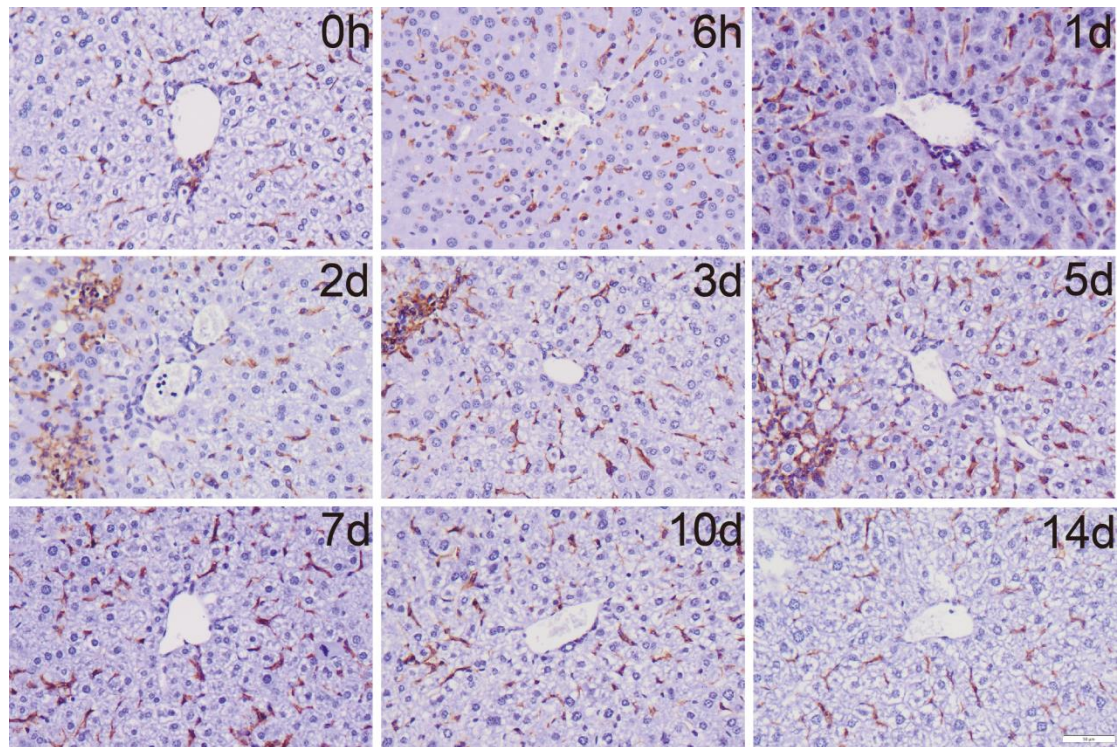
Supplementary Figure 7 Representative images of NK/NKT cells in the livers of ConA-treated wild-type mice. Scale bar: 50 μ m.



Supplementary Figure 8 Representative images of CD4⁺ T cells in the livers of ConA-treated wild-type mice. Scale bar: 50 μ m.



Supplementary Figure 9 Representative images of CD8⁺ T cells in the livers of ConA-treated wild-type mice. Scale bar: 50 μ m.



Supplementary Figure 10 Representative images of macrophages in the livers of ConA-treated wild-type mice. Scale bar: 50 μ m.