

Figure S1 Nomogram for predicting 1-, 3-, and 5-year disease-specific survival (DSS) in gastric NENs patients after surgery.

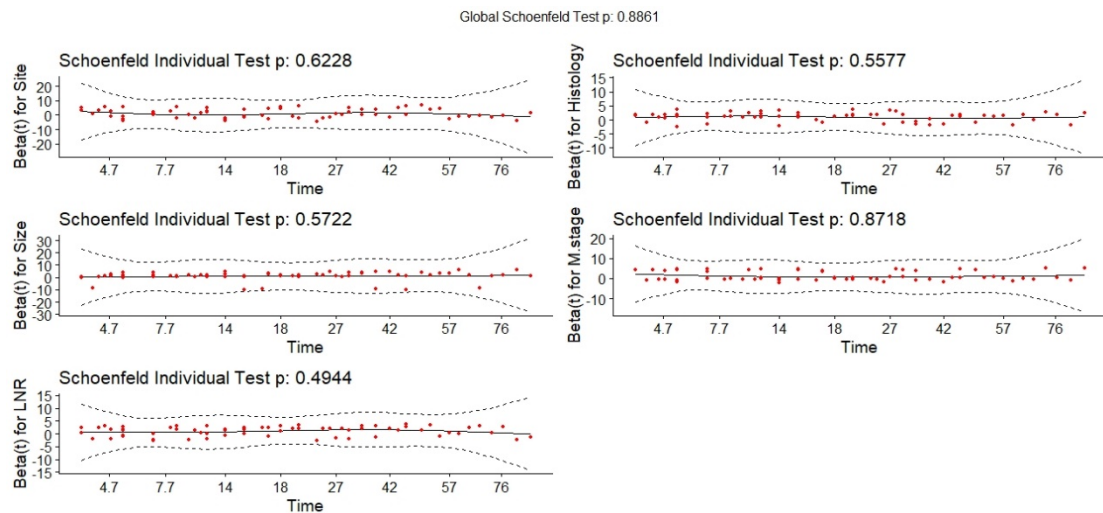


Figure S2 The presentation of the Schoenfeld Residuals Test in the Cox regression model.

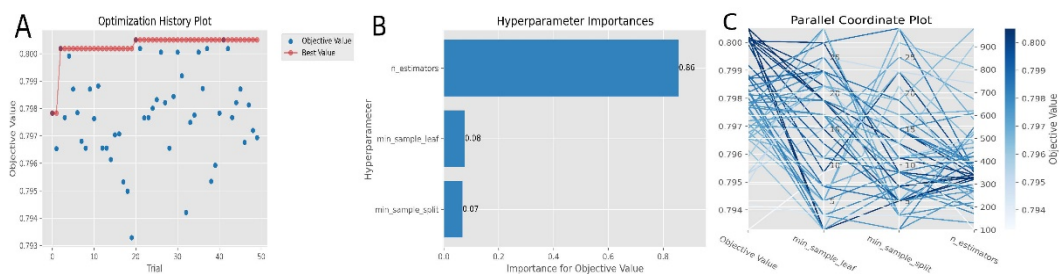


Figure S3 The hyperparameter optimization process in the RSF model, (A) The hyperparameter optimization history. (B) The importance of hyperparameters. (C) The high-dimensional relationships of hyperparameters.

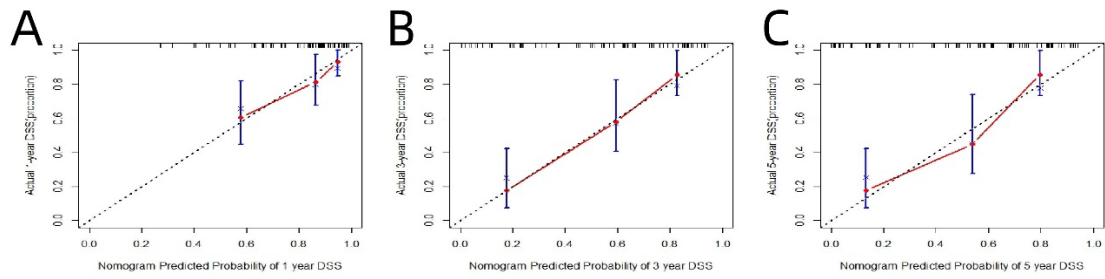


Figure S4 Calibration curves of the CoxPH model for 1-year(A), 3-year(B), and 5-year(C) DSS in the test set.

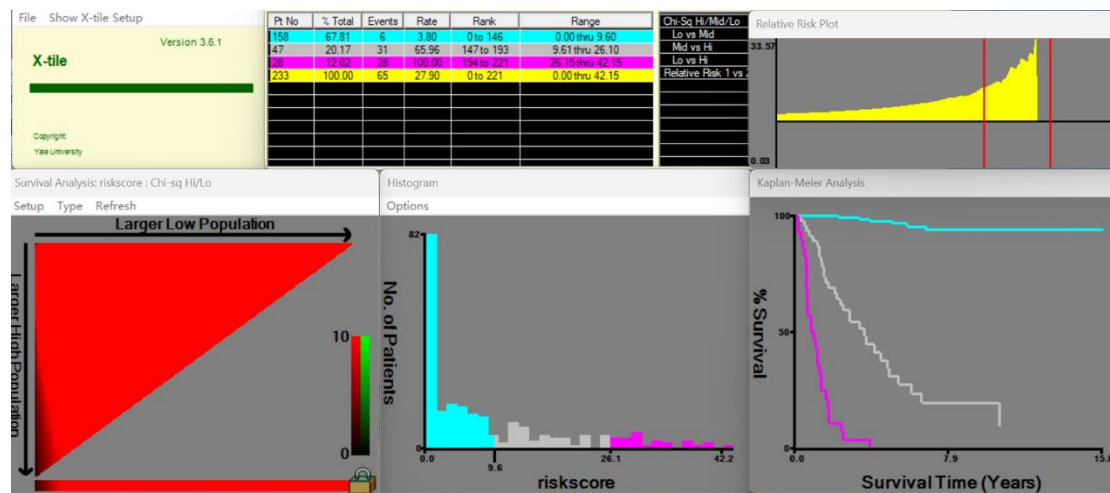


Figure S5 Selecting the optimal cut-off value of risk scores via the X-tile tool (Version 3.6.1).