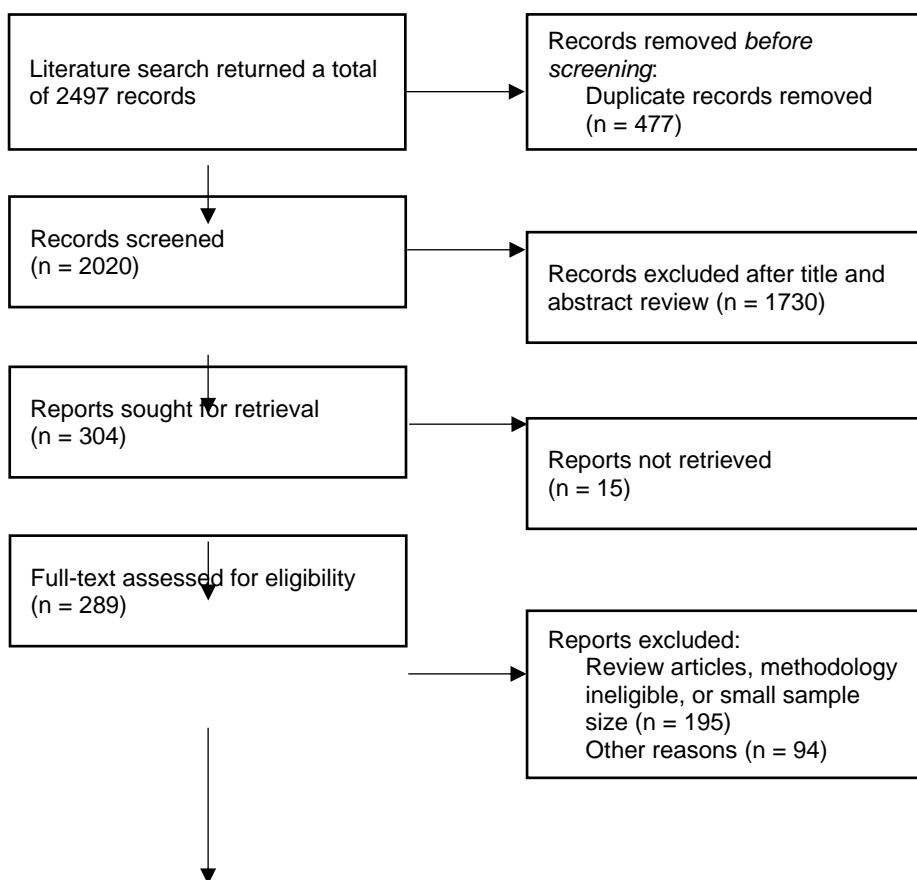


Supplementary Table 1 Diabetic ketoacidosis reported by the reviewed trial across heart failure subtypes

DKA	Trial	event in gliflozins versus placebo groups, respectively
HF _r EF	DECLARE-TIMI58	no DKA in either group
	DAPA-HF	3/2368 vs 0/2371
	EMPEROR-Reduced	0/1863 vs 0/1863 (no DKA occurred in either group)
HF _p EF	EMPEROR-Preserved	4/2996 vs 5/2989
	DELIVER	46/3126 vs 50/3127
HF(nos)	DAPA-CKD	0/235 vs 0/233 (no DKA in occurred either group)
	SOLOIST-WHF	2/603 vs 4/607
no HF	DAPA-CKD	0/1914 vs 2/1916

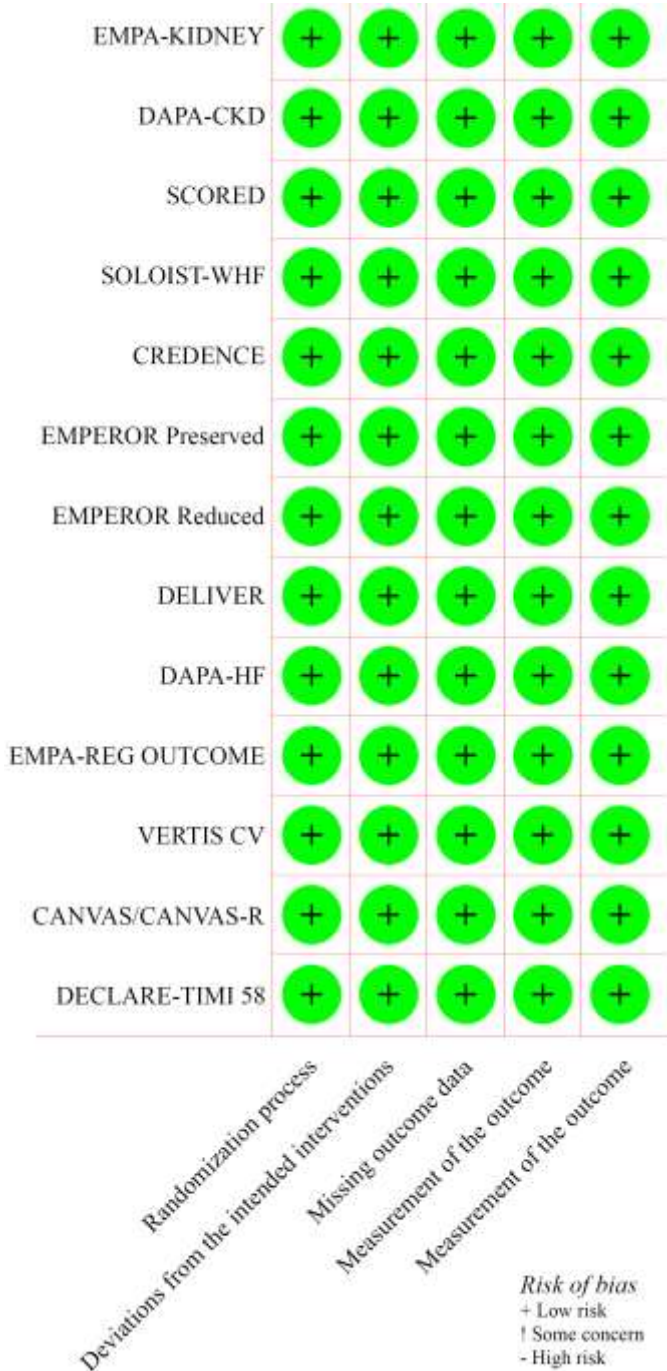
DKA: diabetic ketoacidosis; HF: heart failure; HF_pEF: heart failure with preserved ejection fraction; HF_rEF: heart failure with reduced ejection fraction; nos: not otherwise specified;



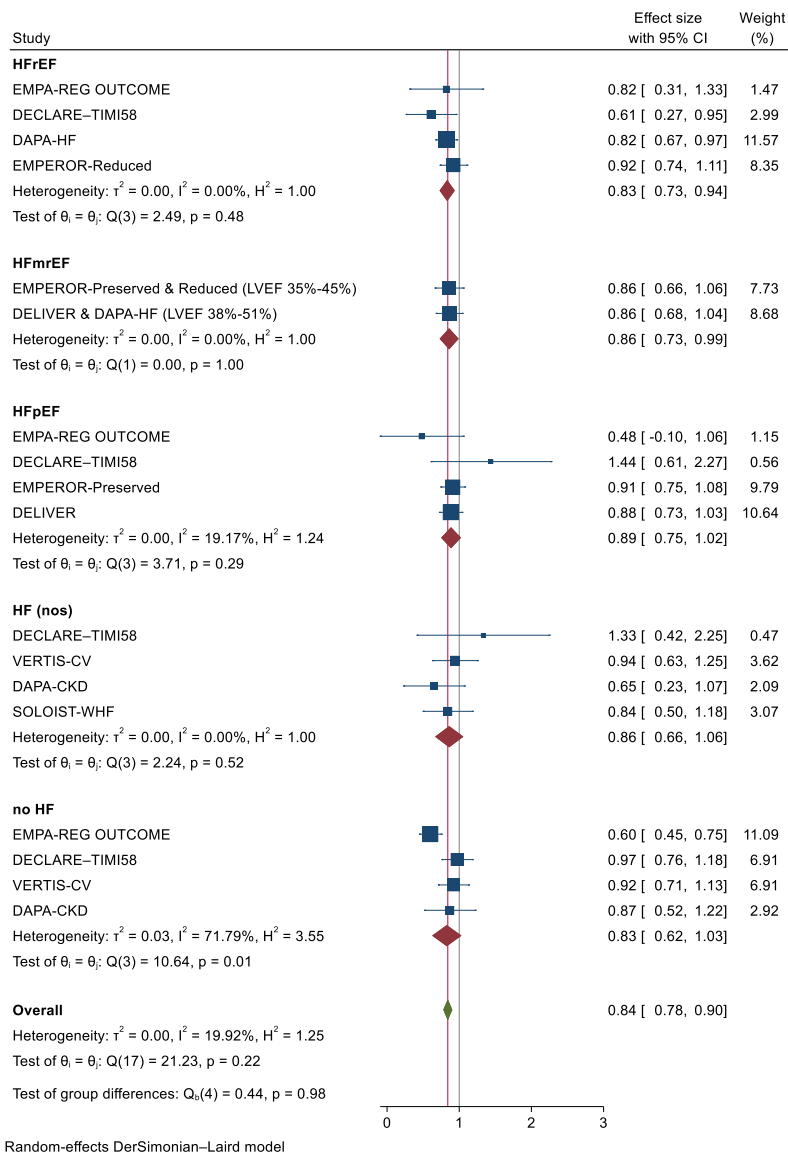
Total randomized controlled trials included in the systematic review (n = 13)

Post hoc analysis studies and comprehensive review articles with novel data (n = 14)

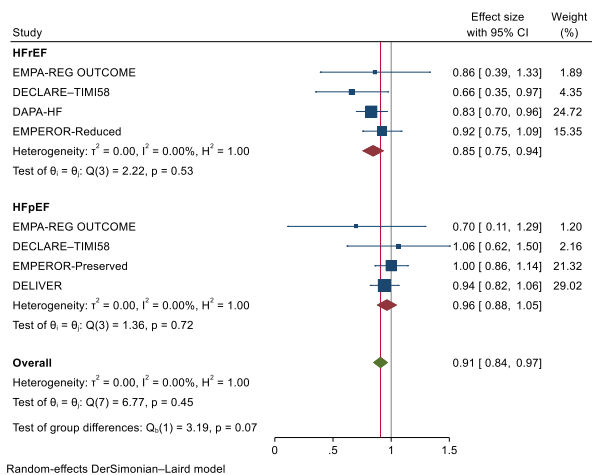
Supplementary Figure 1 Flowchart of the systematic review process.



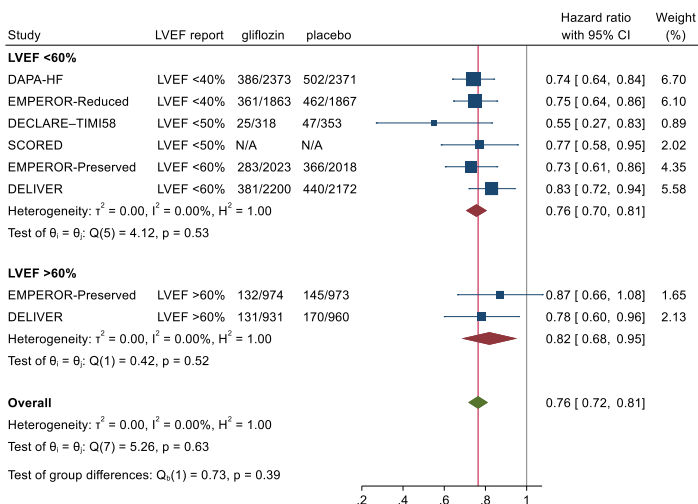
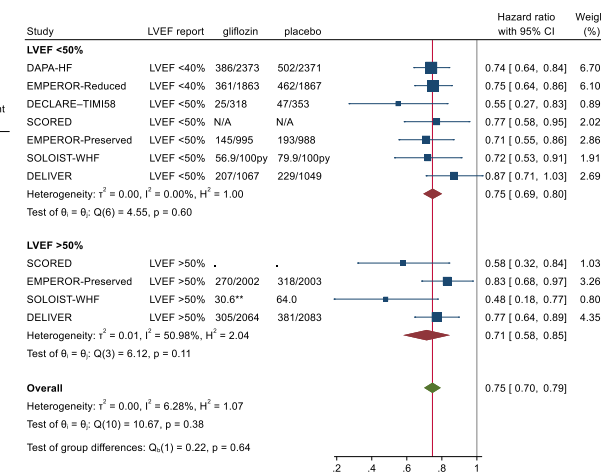
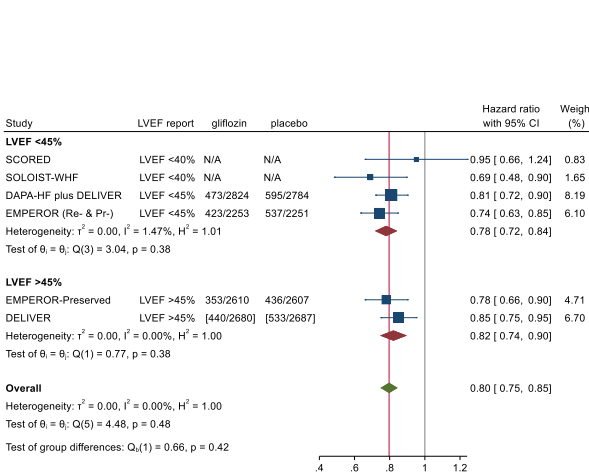
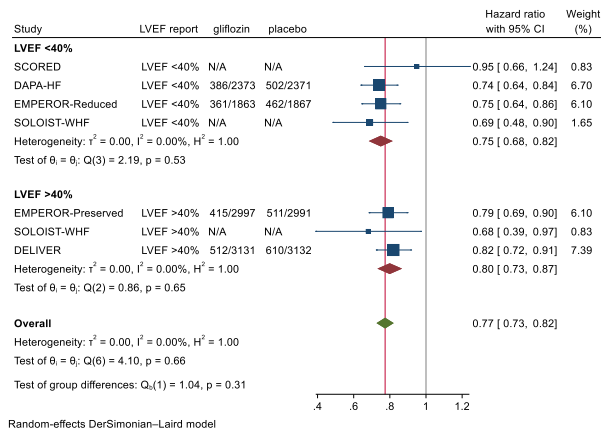
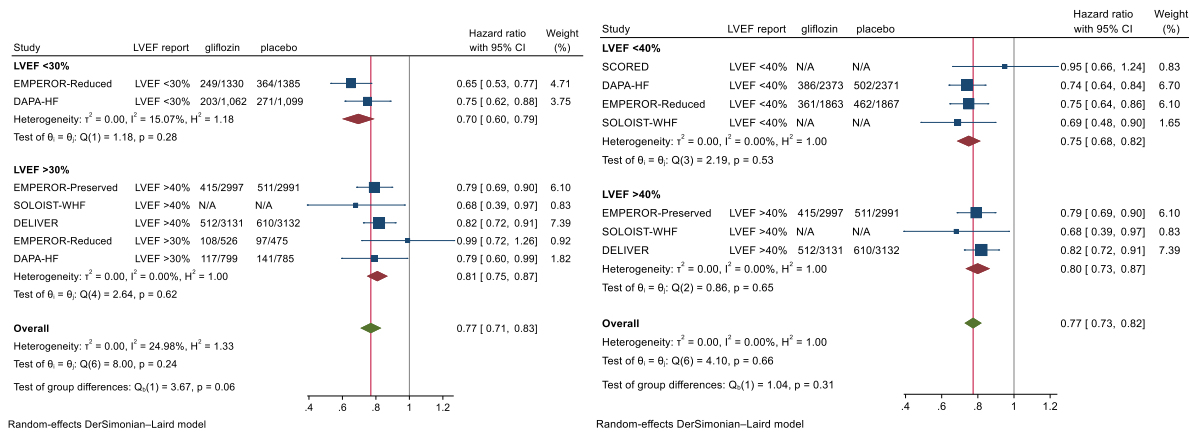
Supplementary Figure 2 Risk of bias assessment of included trials as assessed using Version 2 of the Cochrane Risk-of-Bias tool for randomized trials (ROB2).



Supplementary Figure 3 Meta-analysis of cardiovascular death as the outcome of patients receiving gliflozins versus placebo across heart failure subtypes. HF: heart failure; HFpEF: heart failure with preserved ejection fraction; HF rEF: heart failure with reduced ejection fraction; nos: not otherwise specified; *

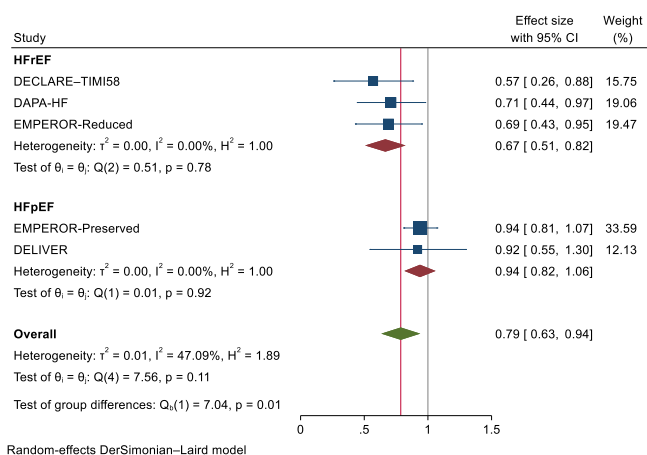


Supplementary Figure 4 Differential effects of gliflozins on all-cause mortality between patients with HFrEF and HfpEF. HF: heart failure; HfpEF: heart failure with preserved ejection fraction; HFrEF: heart failure with reduced ejection fraction; nos: not otherwise specified;

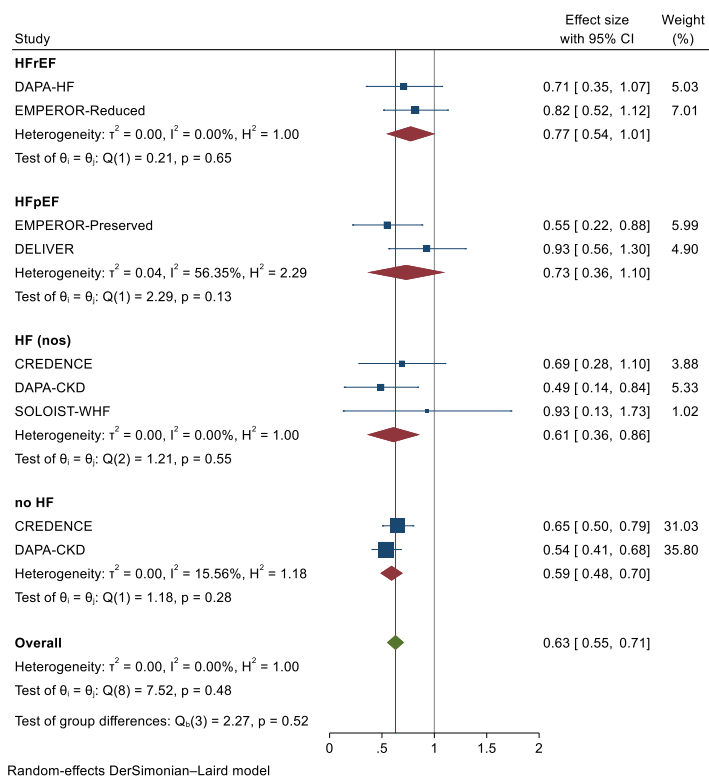


Supplementary Figure S4. Differential primary composite outcomes across the patients' baseline left ventricular ejection fraction strata

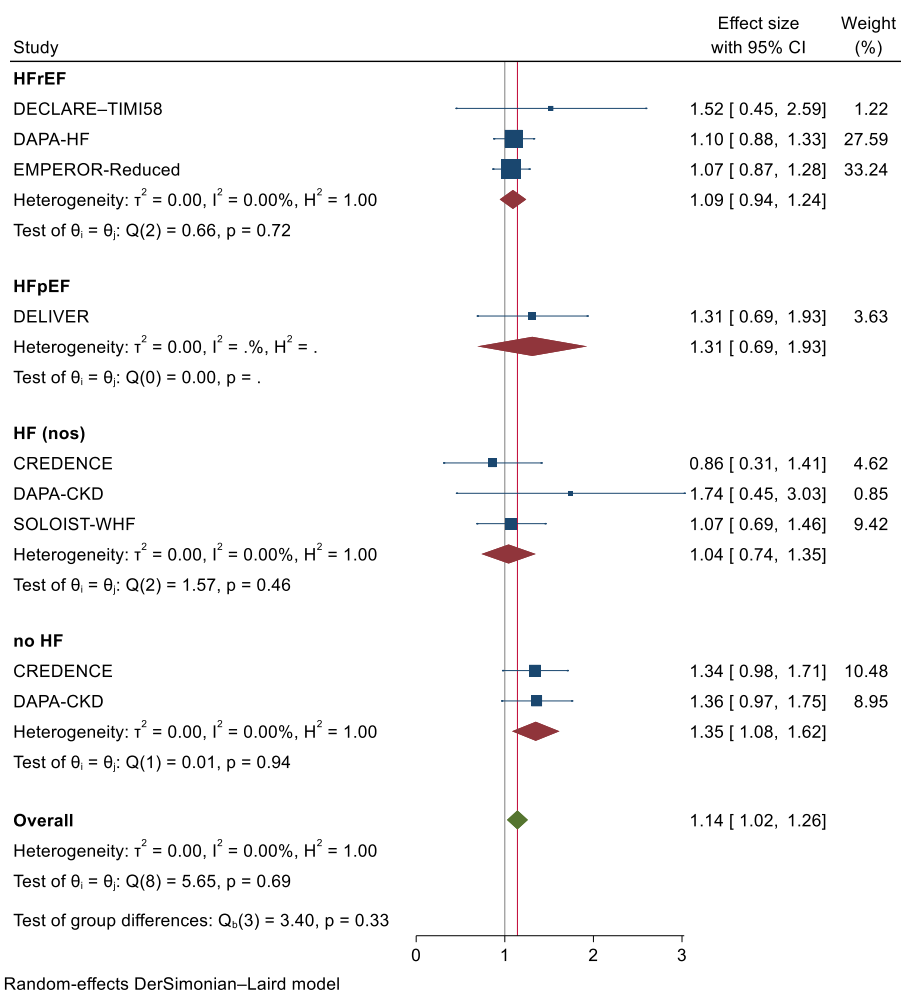
HF: heart failure; HFpEF: heart failure with preserved ejection fraction; HFrEF: heart failure with reduced ejection fraction; nos: not otherwise specified; * per 1000 person-years; ** per 100 person-years; N/A: not available;



Supplementary Figure 5 Differential effects of SGLT2 inhibitors on the incident acute kidney injury (acute renal failure) between patients with heart failure with either preserved or reduced left ventricular ejection fraction. HFpEF: heart failure with preserved ejection fraction; HFrEF: heart failure with reduced ejection fraction;



Supplementary Figure 6 the impact of SGLT2inhibitors on the renal disease progression (worsening renal function) across the heart failure subgroups. HF: heart failure; HFpEF: heart failure with preserved ejection fraction; HFrEF: heart failure with reduced ejection fraction; nos: not otherwise specified;



Supplementary Figure 7 Volume depletion in response to gliflozins across the heart failure status and subtypes. HF: heart failure; HFpEF: heart failure with preserved ejection fraction; HFrEF: heart failure with reduced ejection fraction; nos: not otherwise specified;