

2 weeks

3 weeks

4 weeks

HUH7

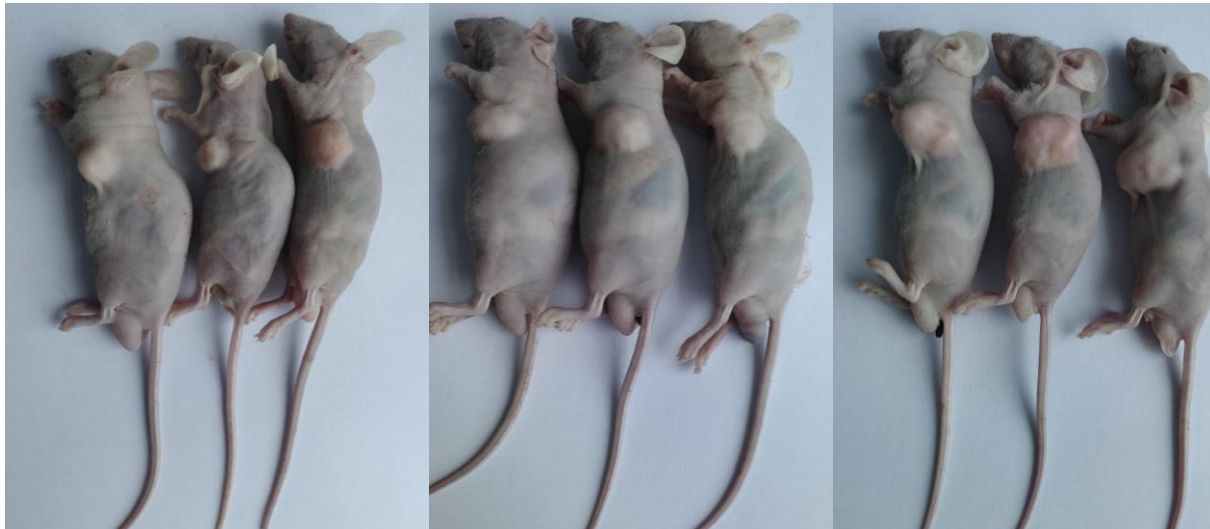


2 weeks

3 weeks

4 weeks

JHH7



Supplementary Figure 1

Supplementary Table 1 Patient clinical information

Characteristics	Combo knife (%)	Combo knife + Sorafenib group (%)	TACE + Sorafenib (%)
Sex			
Male	15 (53.6)	16 (57.1)	17 (60.7)
Female	13 (46.4)	12 (42.9)	11 (39.3)
Age (years)			
18-55	16 (57.1)	19 (67.9)	15 (53.6)
>55	12 (42.9)	9 (32.1)	13 (46.4)
AFP level (ng/mL)			
<400	10 (35.7)	9 (32.1)	14 (50.0)
≥400	18 (64.3)	19 (67.9)	14 (50.0)
Child grading			
Grade A	7 (25.0)	10 (35.7)	9 (32.1)
Grade B	21 (75.0)	18 (64.3)	19 (67.9)
Vascular invasion			
Yes	17 (60.7)	18 (64.3)	15 (53.6)
No	11 (39.3)	10 (35.7)	13 (46.4)
Distant metastasis			
Yes	7 (25.0)	9 (32.1)	12 (42.9)
No	21 (75.0)	19 (67.9)	16 (57.1)

Supplementary Table 2 mRECIST evaluation criteria

Classification	Definition
CR	All target lesion arterial phase enhancement disappeared.
PR	The total diameter of target lesion (arterial phase enhancement) decreased by $\geq 30\%$.
SD	The target lesion (arterial phase enhancement) did not shrink to PR or increase to PD.
PD	The comprehensive diameter of target lesion (arterial phase enhancement) increased by $\geq 20\%$ or new lesion appeared.

CR: complete remission; PR: partial remission; SD: stable disease; PD: disease progression.

Supplementary Table 3 Criteria for the Evaluation of Adverse Events version 5.0

Common Terminology CTCAE

- Level I Mild; asymptomatic or with mild symptoms; usually no treatment is needed.
- Level II Moderate; requires minor, localized, or non-invasive treatment; limited instrumental activities of daily living commensurate with age.
- Level III Severe or of significant medical importance but not immediately life-threatening; leading to hospitalization or prolonging hospital stay; causing disability; limiting self-care activities of daily living.
- Level IV Life-threatening; requiring emergency treatment.
- Level V Death related to adverse reactions;
-

CTCAE: Adverse Events.

Supplementary Table 4 RT-qPCR primer sequences

Gene	Sequence
PPIA	F 5'-TGCTGGACCCAACACAAATG-3'
	R 5'-TTGTCCACAGTCAGCAATGG-3'
SLC29A3	F 5'-TGAGAGCTACCTTGCCGTTG-3'
	R 5'-CTGCAACCCTGTTGACAAGC-3'
GAPDH	F 5'-GGCTGTTGTCATACTTCTCATGG-3'
	R 5'-GGAGCGAGATCCCTCCAAAAT-3'

Note: F:forward; R: reverse.