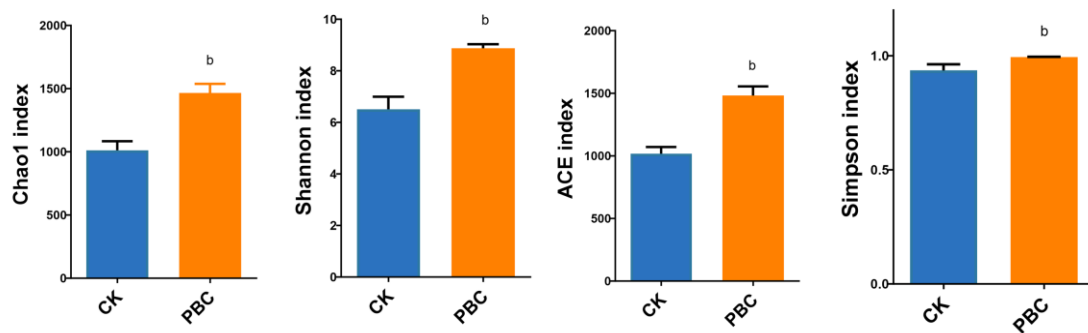
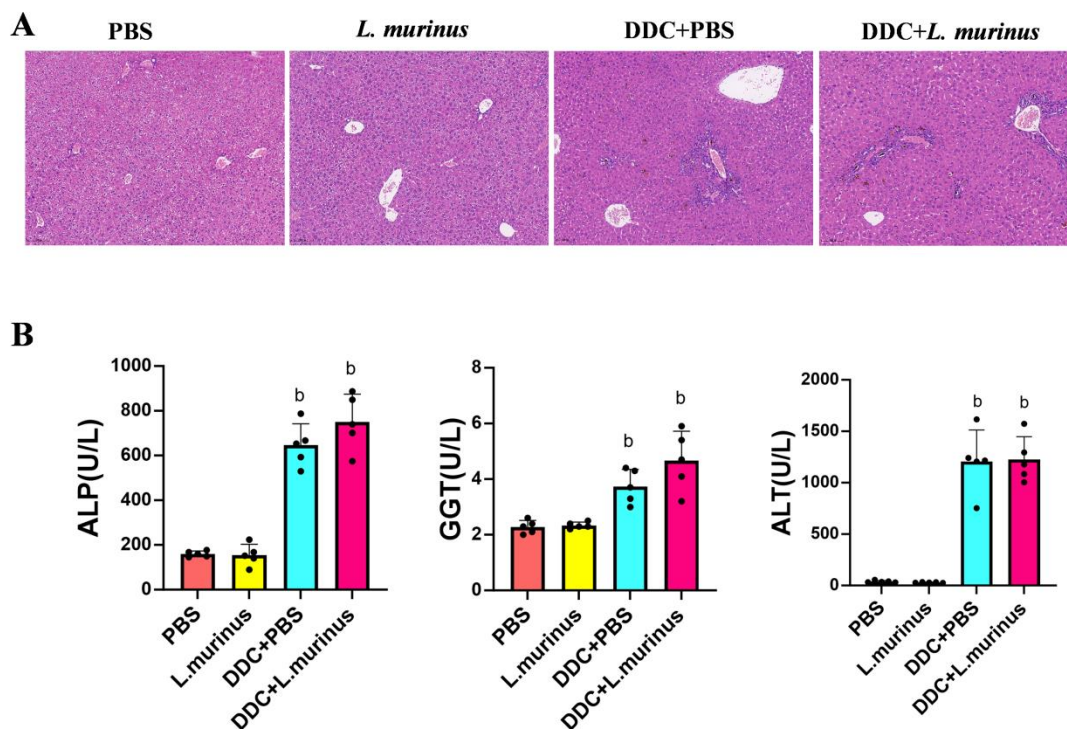


Supplementary Figure



Supplementary Figure 1. Alpha diversity values of liver tissue microbiota in patients with PBC and controls. Alpha diversity of liver tissue microbiota in controls and PBC patients measured by Chao1, Shannon, ACE richness and Simpson diversity, All values are shown as mean ± SD; ^b*P* < 0.01 vs PBS group.



Supplementary Figure 2. *L. murinus* colonization did not aggravates DDC induced-cholestatic cholangitis. (a) Representative images of Liver sections stained with hematoxylin and eosin (original magnification 200×; scale bars, 100 μm); (b) Serum ALP, GGT and ALT values from each group are shown. All the values are shown as mean ± SD; ^b*P* < 0.01 vs PBS group.