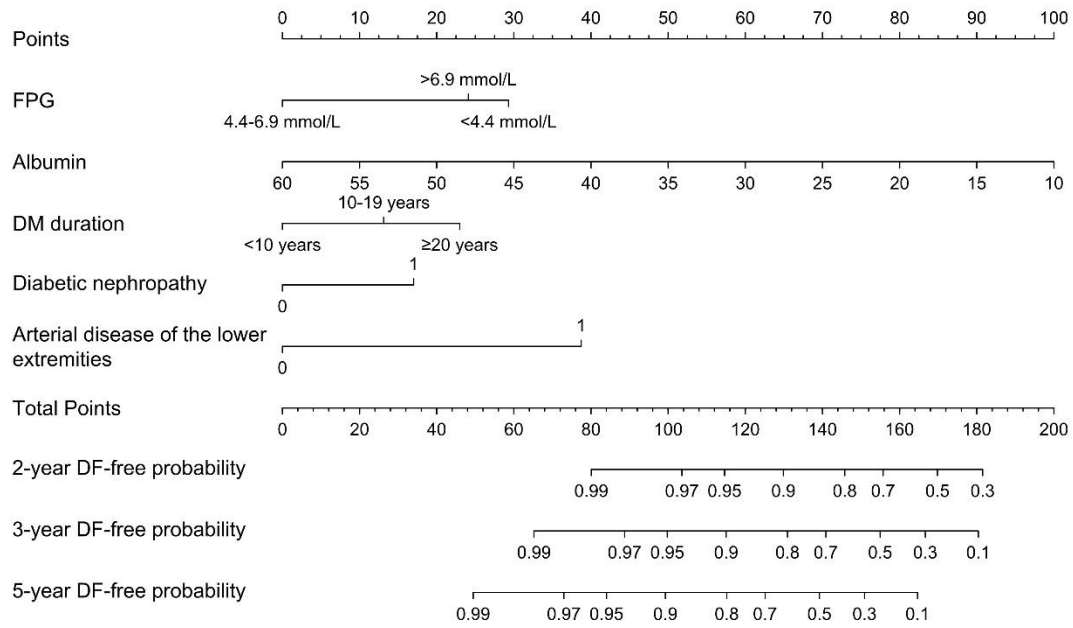


Supplementary material

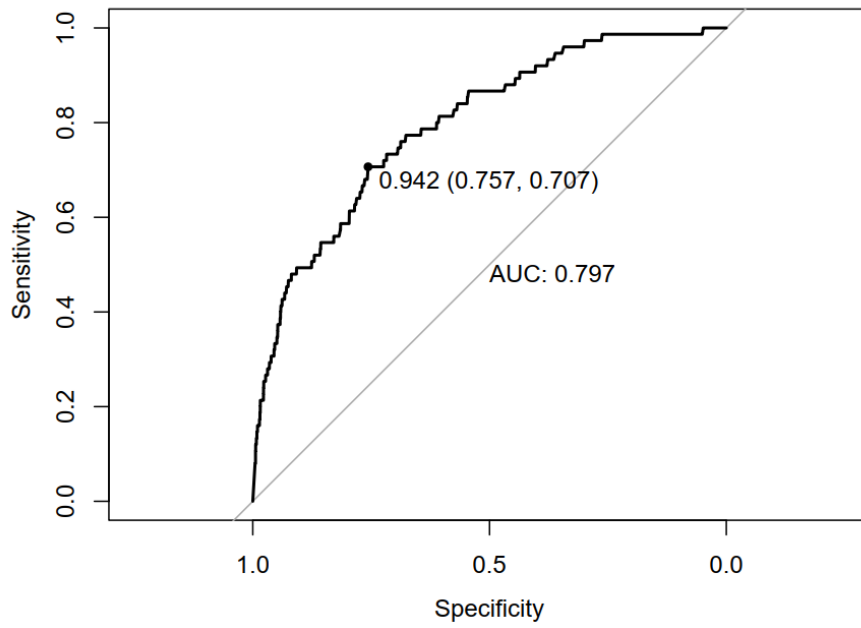
Supplementary Figure 1 A constructed nomogram for predicting the risk of new-onset diabetic foot over 2, 3, and 5 years of follow-up in hospitalized type 2 diabetes patients.

Supplementary Figure 2 The 3-year ROC curve of new-onset diabetic foot prediction model in hospitalized type 2 diabetes patients.

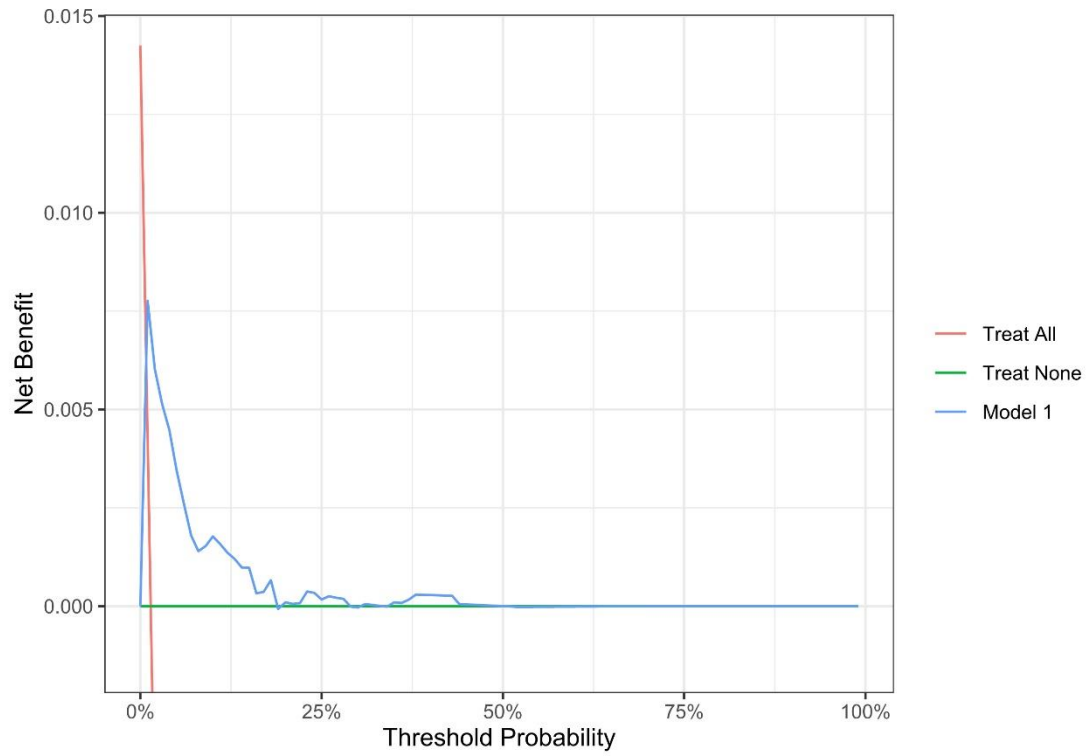
Supplementary Figure 3 Decision curve analysis for prediction model in hospitalized type 2 diabetes patients.



Supplementary Figure 1 A constructed nomogram for predicting the risk of new-onset diabetic foot over 2, 3, and 5 years of follow-up in hospitalized type 2 diabetes patients. DM: Diabetes mellitus; DF: diabetic foot; FPG: Fasting plasma glucose.



Supplementary Figure 2 The 3-year ROC curve of new-onset diabetic foot prediction model in hospitalized type 2 diabetes patients. Sensitivity: 0.707; specificity: 0.757; AUC: Area under the curve; ROC: Receiver operating characteristic.



Supplementary Figure 3 Decision curve analysis for prediction model in hospitalized type 2 diabetes patients. Model 1 was adjusted diabetes duration, albumin, fasting plasma glucose, diabetic nephropathy, and lower extremity arterial disease.