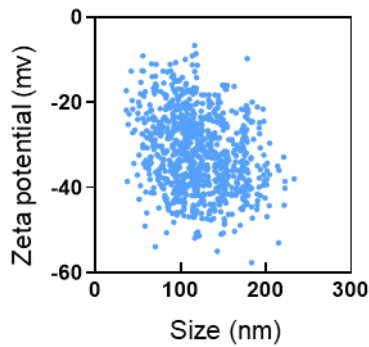
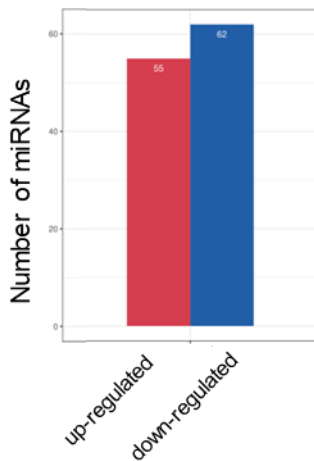


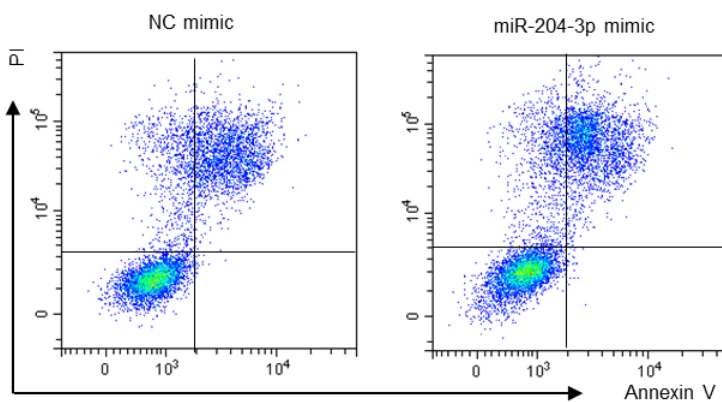
Supplementary material



Supplementary Figure 1 Nanoparticle tracking analysis (NTA) showing the size distribution and zeta potential of C-EV.

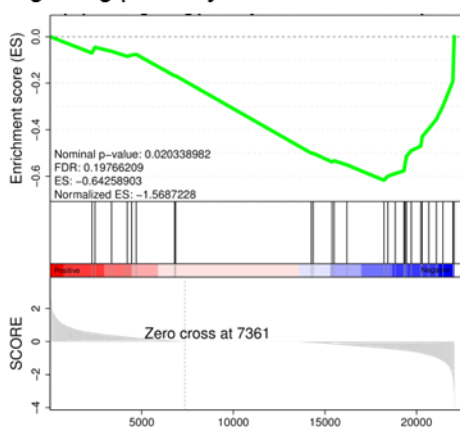


Supplementary Figure 2 Differentially expressed miRNAs measurements of LP-EV and C-EV.



Supplementary Figure 3 Representative flow cytometry plots showing apoptosis in MKN45 gastric cancer cells transfected with negative control (NC) mimic or miR-204-3p mimic, followed by treatment with paclitaxel (PTX) in combination with C-EV.

negative regulation of extrinsic apoptotic signaling pathway via death domain receptors



Supplementary Figure 4 Gene Set Enrichment Analysis (GSEA) plot for the comparison of PTX vs. PBS group

Supplementary Table 1 Encapsulation efficiency and loading content for PTX in LP-EV.

LP-EVs (μg)	PTX (μg)	ADC (μg)	EE (%)	LC (%)
100	25	6.30	25.2	6.30
100	50	13.15	26.3	13.15
100	75	15.87	21.16	15.87
100	100	15.95	15.95	15.95

ADC, Actual drug content; EE, Encapsulation efficiency; LC, Loading content.