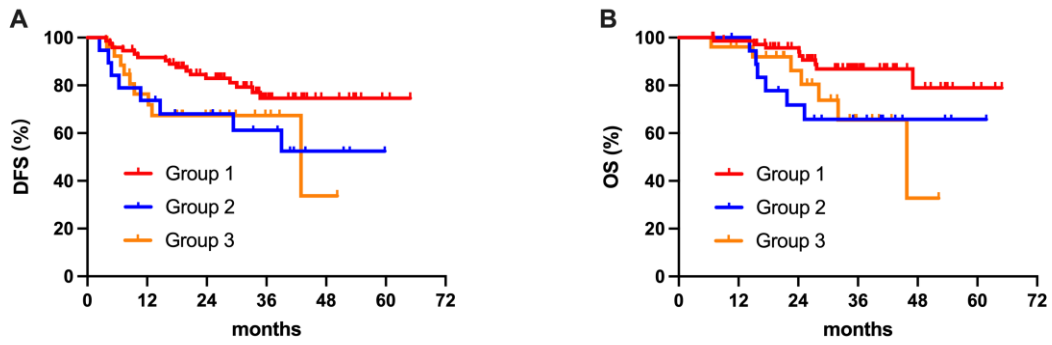


Supplementary Table 1 Comparison of the clinical and pathological characteristics between Group1, 2 and 3

Variables	Group 1 (n=73)	Group 2 (n=19)	Group 3 (n=26)	P1	P2	P3
Age (year, mean ± SD)	62.55 ± 8.59	65.11 ± 6.34	61.48 ± 8.04	0.239	0.576	0.115
Gender (male/female)	35/38	13/6	12/14	0.111	0.875	0.138
BMI > 24Kg/m ² (present/absent)	20/53	8/11	8/18	0.215	0.743	0.433
History of smoke (present/absent)	31/42	12/7	12/14	0.107	0.745	0.259
History of drinking (present/absent)	29/44	9/10	13/13	0.547	0.363	0.862
Hypertension (present/absent)	25/48	6/13	7/19	0.827	0.493	0.734
Cardiovascular disease (present/absent)	14/59	4/15	6/20	0.854	0.671	0.872
HbA1c (% , mean ± SD)	5.93 ± 0.56	8.26 ± 1.51	7.86 ± 0.42	<0.001	<0.001	0.337
FPG (mmol/L, mean ± SD)	6.49 ± 1.91	8.83 ± 4.03	8.37 ± 3.61	0.001	0.001	0.688
CEA (ng/ mL, mean ± SD)	31.27 ± 118.37	134.21 ± 290.94	94.33 ± 242.28	0.158	0.205	0.361
CA19-9 (ng/ mL, mean ± SD)	28.38 ± 88.07	577.78 ± 2351.56	56.91 ± 111.12	0.336	0.237	0.109
T stage (3/4)	51/22	13/6	18/8	0.903	0.952	0.954
N stage (1/2)	48/25	11/8	17/9	0.525	0.973	0.609

Tumor location (RCC/LCC)	29/44	9/10	11/15	0.547	0.818	0.736
Tumor size (cm, mean \pm SD)	4.63 \pm 1.95	4.22 \pm 1.37	5.07 \pm 2.12	0.409	0.324	0.263
Vascular invasion (present/absent)	21/52	4/15	6/20	0.501	0.576	0.872
Perineural invasion (present/absent)	23/50	9/10	8/18	0.196	0.944	0.257
Tumor Differentiation (MD/PD)	56/17	17/2	22/4	0.221	0.397	0.636

DM, diabetes mellitus; SD, standard deviation; BMI, body mass index; HbA1c, glycated albumin; FPG, fasting plasma glucose; CEA, carcinoembryonic antigen; CA19-9, carbohydrate antigen 199; LCC, left-side colon cancer; RCC, right-side colon cancer; MD, moderately differentiated; PD, poorly differentiated; *P*1, Group 1 vs Group 2; *P*2, Group 1 vs Group 3; *P*3, Group 2 vs Group 3.



Supplementary Figure 1 Comparisons of the prognostic outcomes of patients in Group 1, 2 and 3. A, comparison of DFS rates in three groups. (Group 1 vs. 2, $P=0.024$; Group 1 vs. 3, $P=0.045$; Group 2 vs. 3, $P=0.987$); B, comparison of OS rates in three groups (Group 1 vs. 2, $P=0.036$; Group 1 vs. 3, $P=0.023$; Group 2 vs. 3, $P=0.959$).