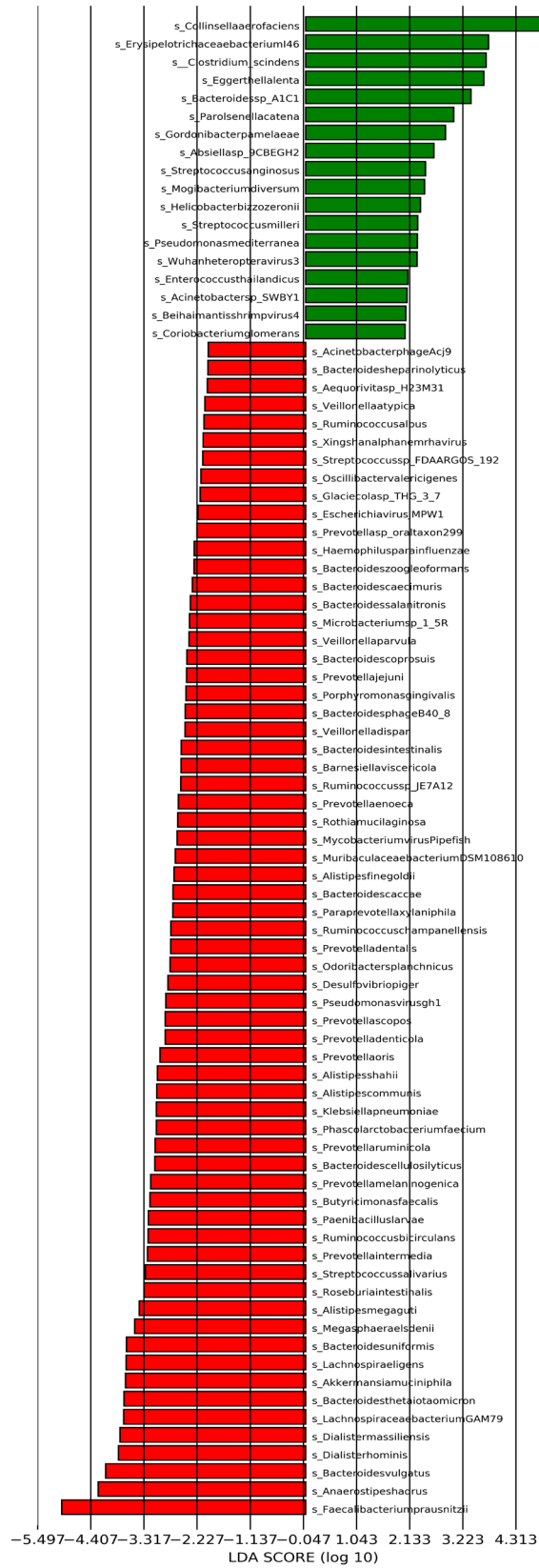


Species_DNA

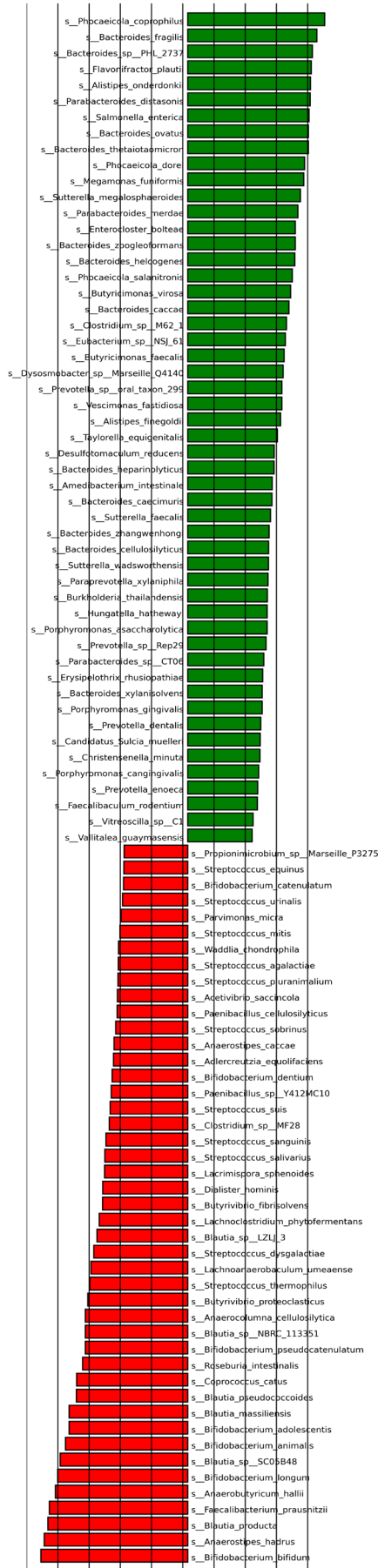
■ Donors ■ Baseline



Supplementary Figure 1. LefSe plot of species differences (DNA levels) in gut microbiota between baseline CD patients and fecal donors. These differences between WMT recipients and donors were statistically significant ($P < 0.05$).

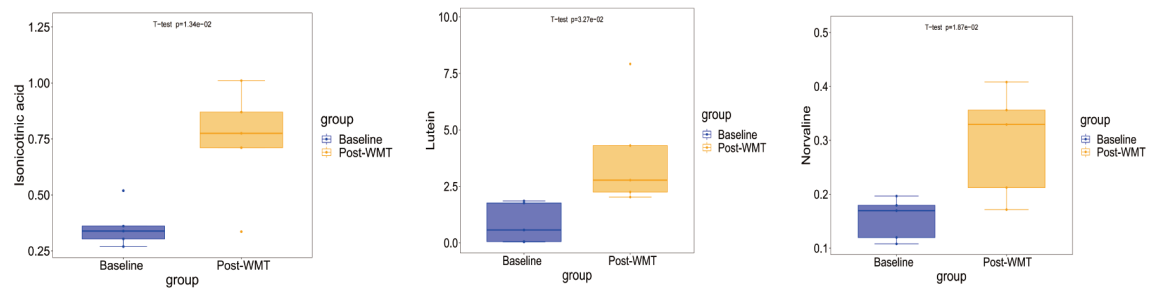
Species_RNA

■ Donors ■ Baseline



-5.2054 1.95 1.85 1.75 1.65 1.55 85 86 87 885
LDA SCORE (log 10)

Supplementary Figure 2. LefSe plot of species differences (RNA levels) in gut microbiota between baseline CD patients and fecal donors. These differences between WMT recipients and donors were statistically significant ($P < 0.05$).



Supplementary Figure 3. Changes in fecal metabolites before and after WMT in the responder group.

Route of WMT	Mid-gut TET	Mid-gut TET	Mid-gut TET	Colonic TET	Colonic TET	Colonic TET	Colonic TET	Colonic TET	Colonic TET	Mid-gut TET	Colonic TET
Donor	3	5	5	3	3	3	4	3	2 and 5	1 and 2	5 and 6
Location	terminal ileum	ileocolonic	ileocolonic	terminal ileum	colonic	terminal ileum	terminal ileum	terminal ileum	colonic	colonic	ileocolonic
Behavior - B1 (nonstricturing, nonpenetrating) - B2 (stricturing) - B3 (penetrating) - p (perianal disease modifier)	B1	B2B3P	B2B3P	B2	B1	B2	B2	B2	B3P	B3P	B1

*Responder

†Non-responder

BMI: Body Mass Index; TET: transendoscopic enteral tubing

Supplementary Table 2. Detailed Clinical Outcomes at Baseline and Three Months After WMT.

Variable	Patient 1 *		Patient 2*		Patient 3*		Patient 4*		Patient 5†		Patient 6†		Patient 7*		Patient 8*		Patient 9†		Patient 10†		Patient 11*	
	Bas elin e	Po st	Ba sel ine	Po st	Ba sel ine	Po st	Ba sel ine	Po st	Ba sel ine	Po st	Ba sel ine	Po st	Ba sel ine	Po st	Ba sel ine	Po st	Ba sel ine	Po st	Ba sel ine	Po st	Ba sel ine	Po st
HBI	5	2	7	3	6	3	5	2	5	9	5	5	5	2	6	3	5	9	5	5	6	2
CDAI	162. 2	14	21 8.4	10 5.2	19 3.4	76	20 5	84	20 7.1	28 9.9	17 8	19 6.9	18 2.6	72. 7	21 7.2	91. 4	18 1.2	27 3	19 3.6	19 4.2	21 0.4	91. 2
Number of stools/day	2	1	3	1	1	0	2	0	1	6	1	1	2	1	0	0	2	5	2	2	2	1
Pain (0-3)	1	0	0	0	1	1	1	1	1	1	1	1	0	0	1	0	0	0	0	0	1	0
hs-CRP (mg/L)	0.49	2.8 9	5.6 8	6.2 1	0.4 9	2.5 7	16. 75	1.3 5	1.5 9	47. 74	4.4 9	4.1 6	0.4 9	0.4 9	0.4 9	0.4 9	36. 35	39. 76	16. 96	26. 58	0.7 1	0.8 2
ESR (mm/h)	3	6	39	34	2	5	40	9	28	68	6	7	16	16	9	1	68	83	71	58	2	5
Fecal calprotectin (ug/g)	114. 7	11 8.6	39 8.8	45 5.1	56 7.6	36 3.5	49 5.3	88 2.7	21 2.3	76 1.4	44 0.1	43 6.5	29 1.8	35 2.1	33 7.5	73. 35	47 7	53 9	43 6.8	50 7.7	35 2.9	-
SES CD	2	-	4	6	6	-	7	4	1	25	8	10	3	3	7	0	19	22	9	13	5	-

score																				
-------	--	--	--	--	--	--	--	--	--	--	--	--	--	--	--	--	--	--	--	--

*Responder

†Non-responder

WMT: washed microbiota transplantation; HBI: Harvey-Bradshaw Index; CDAI: Crohn’s Disease Activity Index; hs-CRP: high-sensitivity C-reactive protein; ESR: erythrocyte sedimentation rate; SES: Simple Endoscopic Score; CD: Crohn’s disease.

Supplementary Table 3. Species with significantly increased levels of DNA and RNA based in the donors’ gut microbiome.

Species_DNA (increase in donor)	LDA SCORE	P	Species_RNA (increase in donor)	LDA SCORE	P
<i>Faecalibacterium prausnitzii</i>	5.002	< 0.01	<i>Faecalibacterium prausnitzii</i>	4.467	< 0.05
<i>Anaerostipes hadrus</i>	4.259	< 0.01	<i>Anaerostipes hadrus</i>	4.638	< 0.01
<i>Roseburia intestinalis</i>	3.317	< 0.05	<i>Roseburia intestinalis</i>	3.398	< 0.05