

Supplementary Material

Dysbiosis promotes recurrence of adenomatous polyps in the distal colorectum

Li-Li Yin^{1,2}, Ping-Qian Qi^{1,2}, Yun-Fei Hu^{1,2}, Xiao-Jun Fu^{1,2}, Rui-Shan He³, Meng-Meng Wang^{1,2,4}, Yan-Juan Deng^{1,2,4}, Su-Yi Xiong^{1,2,4}, Qi-Wen Yu^{1,2,4}, Jin-Ping Hu^{1,2,4}, Lv Zhou^{1,2,4}, Zhi-Bin Zhou^{1,2,4}, Ying Xiong^{5,*}, Huan Deng^{1,2,4,6,*}

¹Affiliated Rehabilitation Hospital, Jiangxi Medical College, Nanchang University, 330006, Nanchang, Jiangxi, China

²The Fourth Affiliated Hospital, Jiangxi Medical College, Nanchang University, 330006, Nanchang, Jiangxi, China

³The Second College of Clinical Medicine, Jiangxi Medical College, Nanchang University, 330006, Nanchang, Jiangxi, China

⁴Tumor Immunology Institute, Nanchang University, 330006, Nanchang, Jiangxi, China

⁵Department of General Medicine, The Second College of Clinical Medicine, Jiangxi Medical College, Nanchang University, 330031, Nanchang, Jiangxi, China

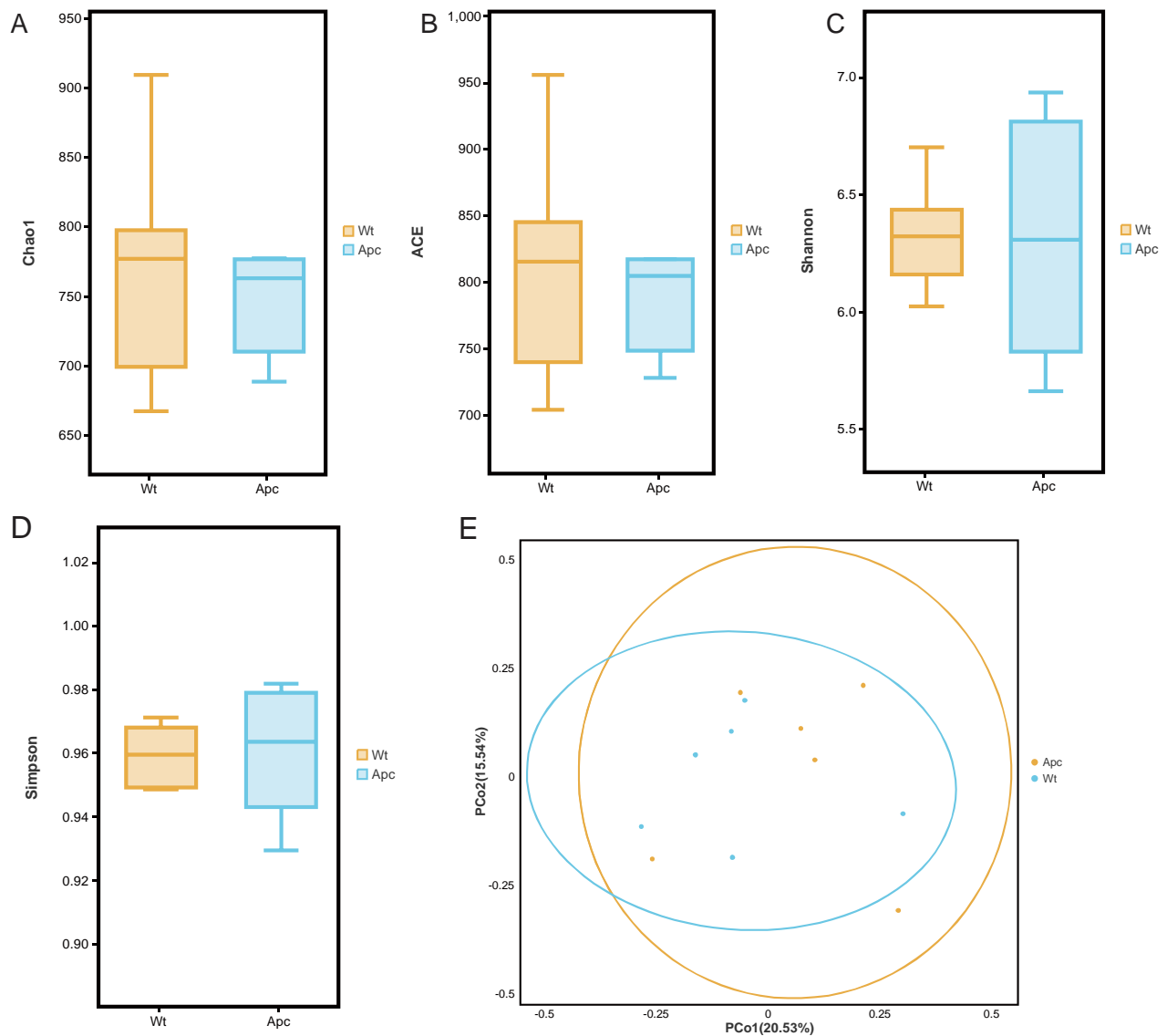
⁶The MOE Basic Research and Innovation Center for the Targeted Therapeutics of Solid Tumors, Jiangxi Medical College, Nanchang University, 330031, Nanchang, Jiangxi, China

Corresponding author: **Huan Deng, M. D., Ph. D., Vice President**, Affiliated Rehabilitation Hospital of Nanchang University, 133 South Guangchang Road, Nanchang, Jiangxi, China 330003.

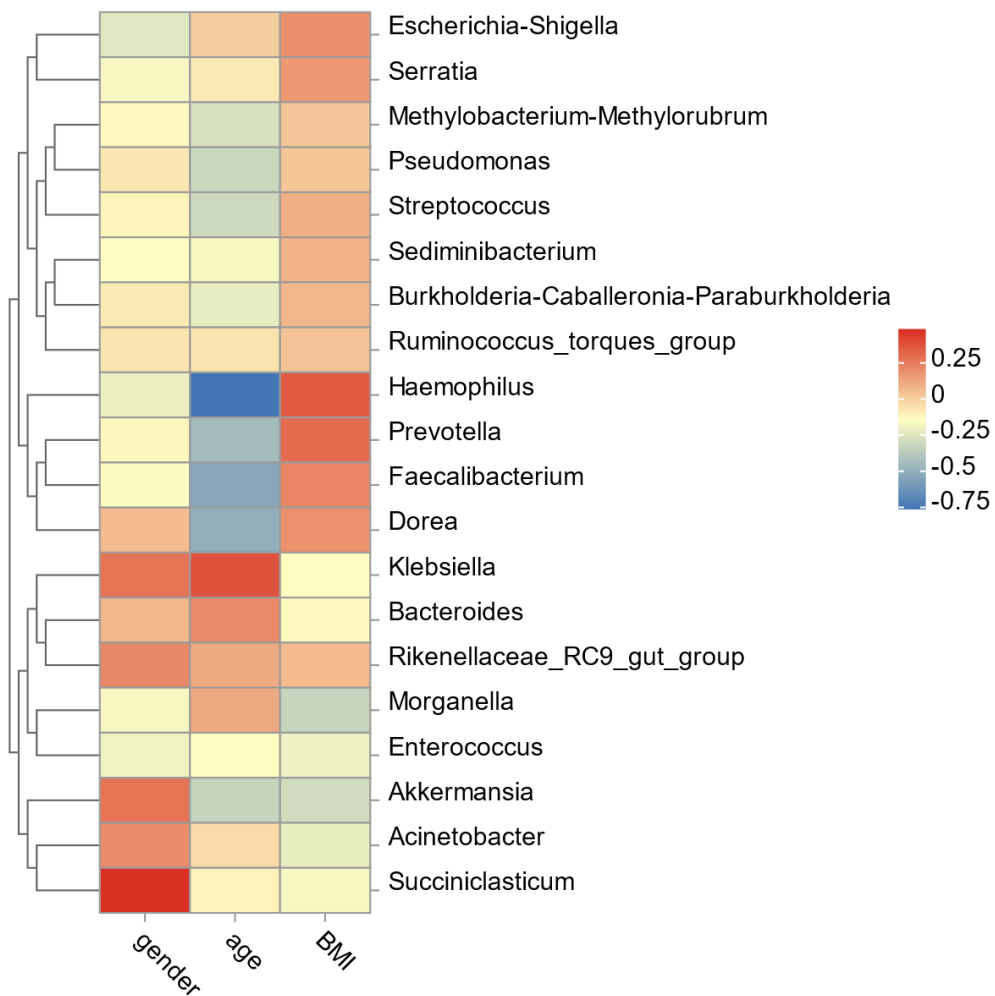
beandeng@ncu.edu.cn

1 Supplementary Figures and Tables

1.1 Supplementary Figures



Supplementary Figure 1 Comparison of α diversity analysis, richness, evenness and diversity between *Apc*^{Min/+} and WT mouse. Chao1 (A), ACE (B), Shannon index (C) and Simpson index (D). E: Plot of principal component analysis (PCoA) of fecal microbiome groups based on Wilcoxon test metrics of OUT level bray distance.



Supplementary Figure 2 Person's correlation analysis for sex, age, BMI, and genus-level microbiome. The horizontal axis indicates environmental factors, the vertical axis indicates species, and the color indicates the strength of the correlation; the number shown in each cell is the correlation coefficient.