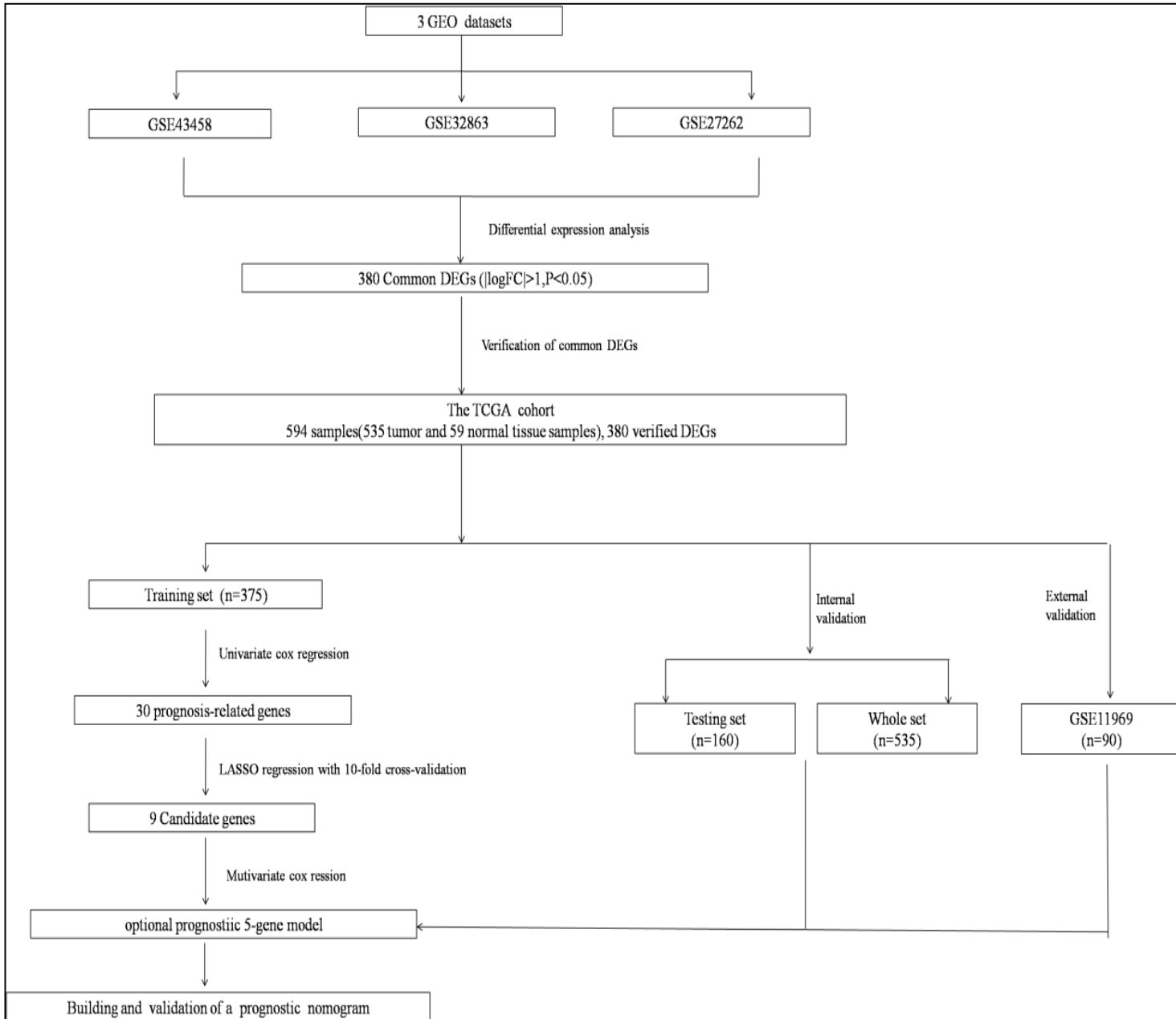
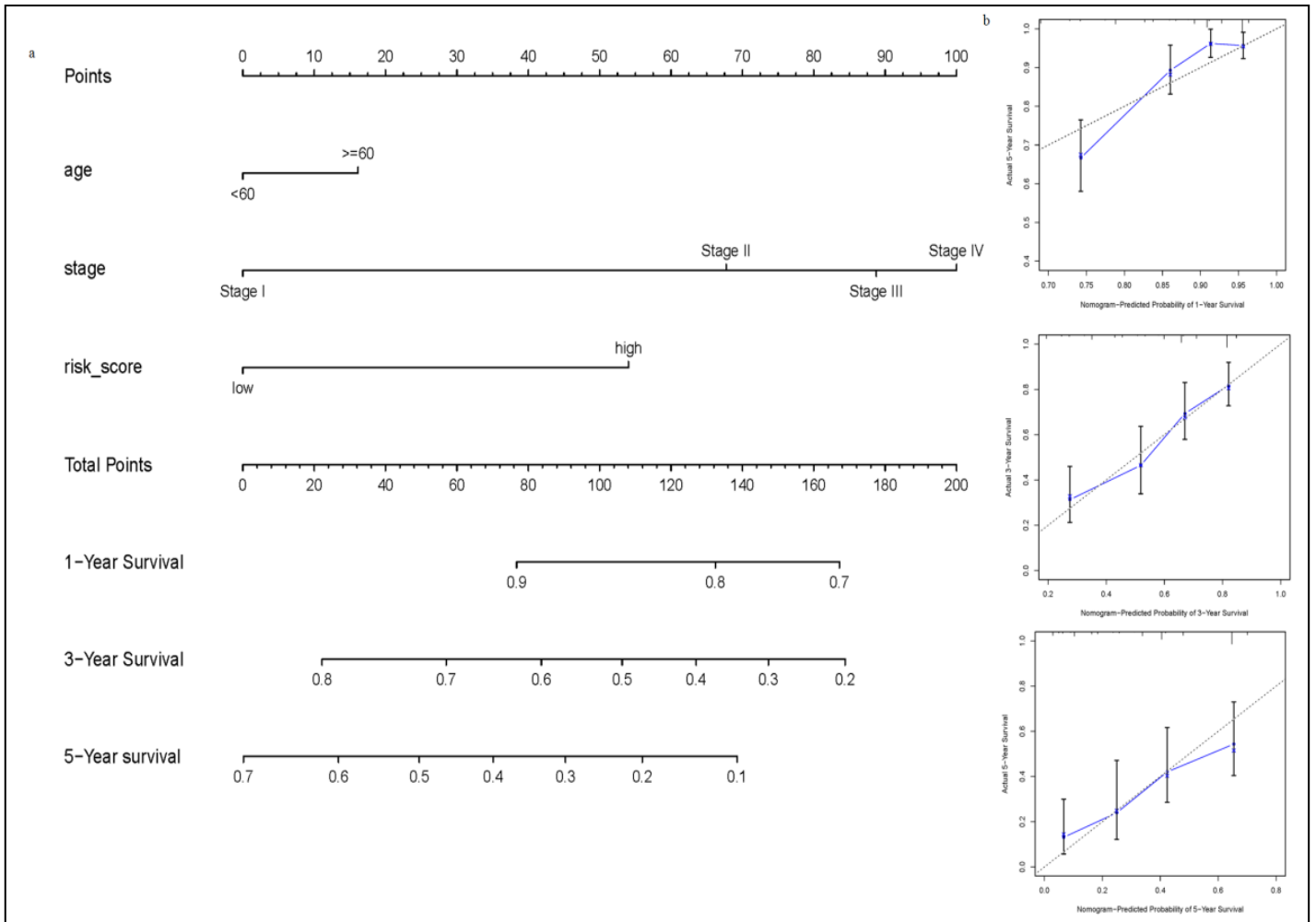


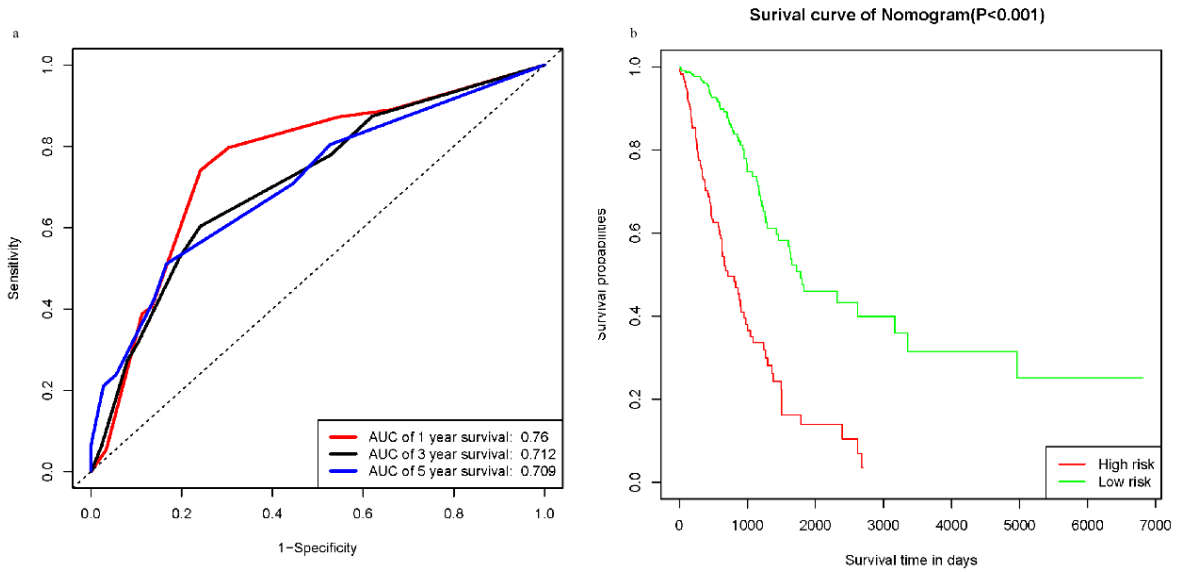
Supplementary Figure 1 Flowchart presenting the process of establishing the gene signature and prognostic nomogram of lung adenocarcinoma in this study



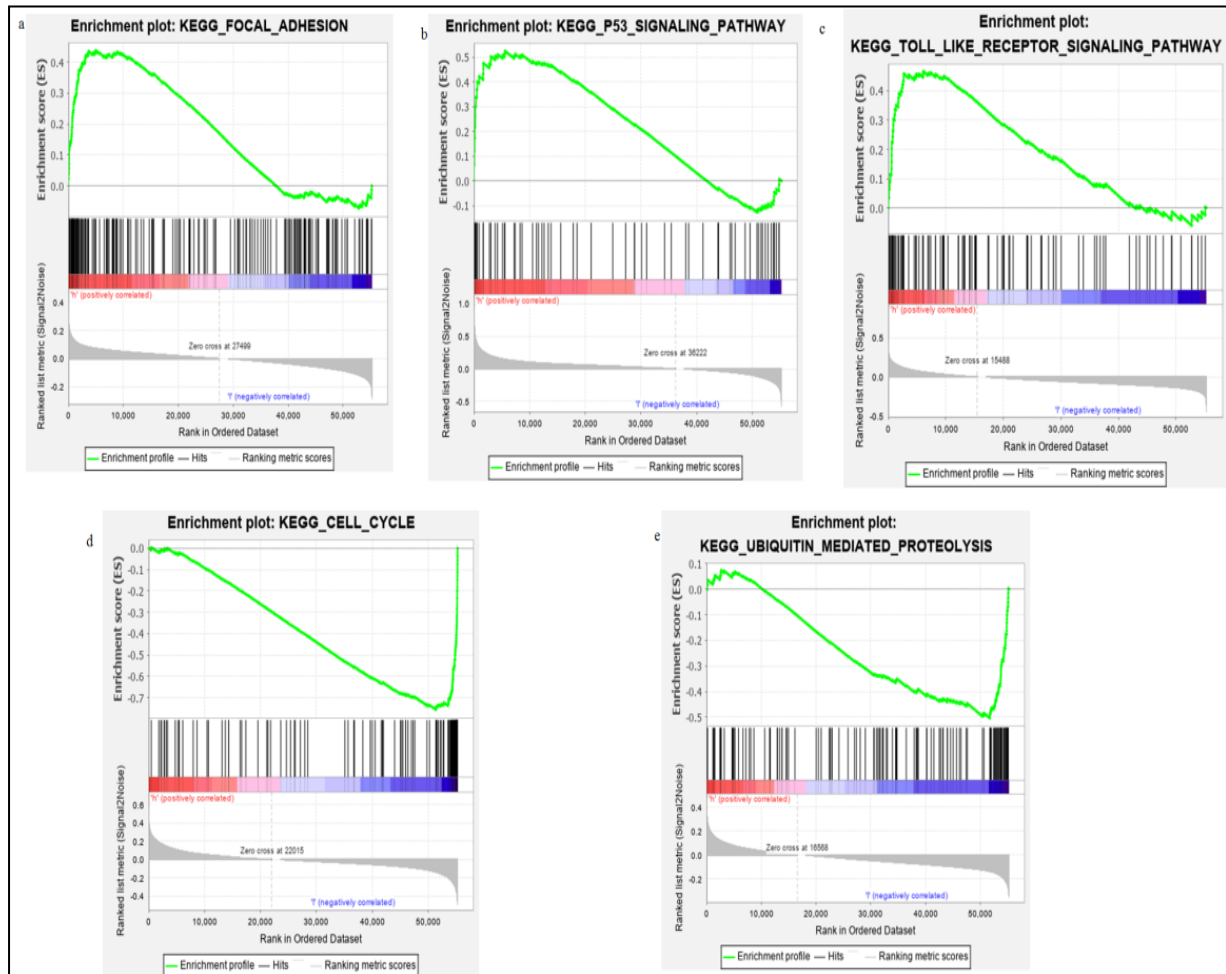
Supplementary Figure 2 Nomogram predicting OS for patients with lung adenocarcinoma



Supplementary Figure 3 Validation results of the diagnostic nomogram



Supplementary Figure 4 GSEA results of 5 prognostic genes expressed in lung adenocarcinoma patients



Supplementary Table 1 Comparison of the nomogram with age, pathologic stage and the combined model

| Models | C-index (95%CI) | P value |
|-------------------------------------|------------------------|----------------|
| Age | 0.501 (0.480-0.522) | - |
| Pathologic stage | 0.684 (0.662-0.706) | - |
| Prognostic model | 0.625 (0.604-0.646) | - |
| Nomogram (combined model) | 0.726 (0.702-0.750) | - |
| Nomogram <i>vs</i> age | - | < 0.05 |
| Nomogram <i>vs</i> pathologic stage | - | < 0.05 |
| Nomogram <i>vs</i> prognostic model | - | < 0.05 |