

Impact of SGLT2 inhibitors on markers of liver steatosis/fibrosis, inflammation and redox balance in patients affected by type 2 diabetes and NAFLD

Supplementary material

1. Supplementary Table 1
2. Supplementary Table 2
3. Supplementary Figure 1

Supplementary Table 1. Distribution of add-on drugs in patients observed in the study ($n = 52$) and included in groups treated with the sodium-glucose co-transporter-2 inhibitors (SGLT2-I) or other glucose lowering drugs (OTHER)

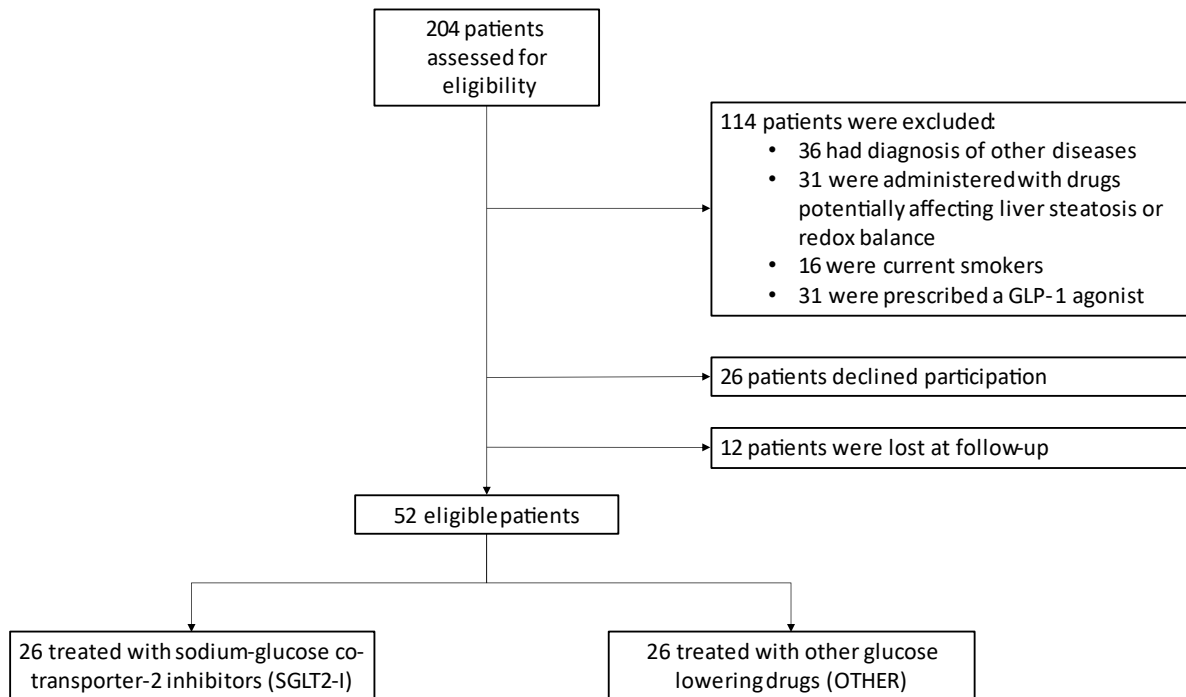
<i>Treatment group</i>	<i>Drug name or class</i>	<i>n (%)</i>
SGLT2-I	Canagliflozin	5 (19.2)
	Dapagliflozin	9 (34.6)
	Empagliflozin	12 (46.2)
OTHER	DPP-4 inhibitors	16 (61.5)
	Thiazolidinediones	10 (38.5)

Supplementary Table 2. Pearson's correlation coefficients of non-invasive markers of hepatic steatosis and fibrosis, with body mass index (BMI) and parameters related to glucose metabolism, inflammation, and oxidative stress, in patients treated with the sodium-glucose co-transporter-2 inhibitors (SGLT2-I) after 6 months of therapy.

	FLI	APRI	NFS	FIB-4	AST/ALT	Stiffness
BMI	<i>0.790**</i>	0.219	0.156	0.254	0.306	0.235
Fasting Glucose	0.167	0.301	0.294	0.147	0.211	0.149
HbA1c	0.201	0.344	0.196	0.185	0.244	0.159
Interleukin-1α	0.301	0.411	0.395	0.312	0.401	0.391
Interleukin-1β	<i>0.612*</i>	<i>0.591*</i>	0.421	0.434	0.398	<i>0.538*</i>
Interleukin-2	0.198	0.210	0.276	0.246	0.195	0.207
Interleukin-4	<i>-0.569*</i>	<i>-0.635*</i>	<i>-0.312</i>	<i>-0.401</i>	<i>-0.297</i>	<i>-0.595*</i>
Interleukin-6	<i>0.499*</i>	0.312	0.296	0.303	0.149	0.396
Interleukin-8	0.316	0.321	0.365	0.297	0.251	0.301
Interleukin-10	<i>-0.601*</i>	<i>-0.592*</i>	<i>-0.287</i>	<i>-0.214</i>	<i>-0.337</i>	<i>-0.376</i>
TNF	<i>0.492*</i>	<i>0.467*</i>	0.317	0.385	0.298	0.394
VEGF	0.176	0.163	0.196	0.184	0.091	0.241
Interferon-γ	0.319	0.105	0.286	0.084	0.136	0.249
MCP-1	0.041	0.108	0.216	0.175	0.194	0.205
EGF	0.159	0.074	0.301	0.155	0.221	0.099
HNE adducts	<i>0.796**</i>	<i>0.801**</i>	<i>0.499*</i>	<i>0.532*</i>	<i>0.601*</i>	<i>0.756**</i>
MDA adducts	<i>0.869***</i>	<i>0.784**</i>	<i>0.573*</i>	<i>0.512*</i>	<i>0.722**</i>	<i>0.863***</i>

FLI: Fatty Liver Index; APRI: Aspartate aminotransferase-to-Platelet Ratio Index; NFS: NAFLD Fibrosis Score; FIB-4: Fibrosis-4; TNF: Tumor Necrosis Factor; VEGF: Vascular Endothelial Growth Factor; MCP-1: Monocyte Chemoattractant Protein-1; EGF: Endothelial Growth Factor; HNE: hydroxynonenal; MDA, malondialdehyde. * = $p < 0.05$; ** = $p < 0.01$; *** = $p < 0.001$.

Supplementary Figure 1. Participant flowchart



GLP-1: glucagon-like peptide 1