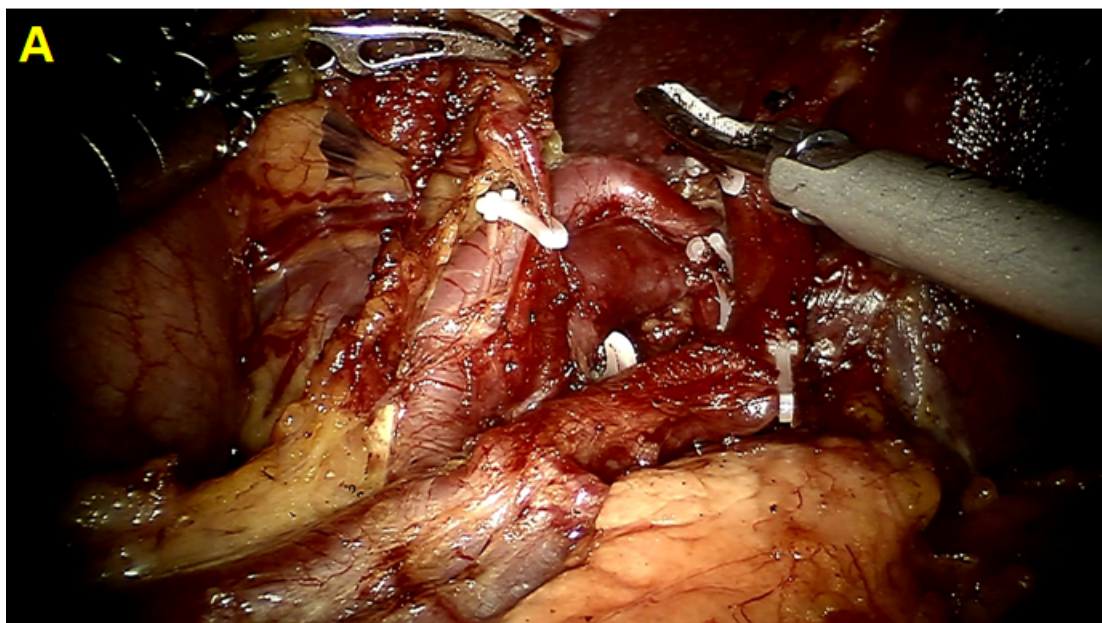
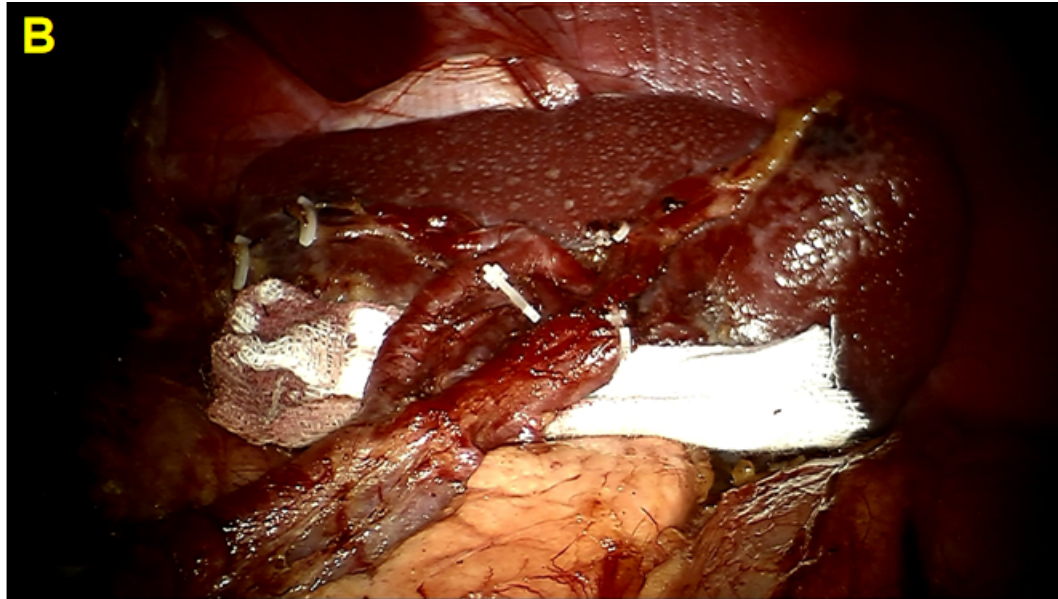


Supplemental Figure 1 Study cohort

Abbreviation: PSM: propensity score matching; BMI: body mass index, ASA: American Society of Anesthesiologists, SGV: short gastric vessel, PGA: post-gastric artery, SUPA: splenic upper pole artery, SLPA: splenic lower pole artery, SpA: splenic artery. RSPSHL: robotic spleen-preserving splenic hilar lymphadenectomy, LSPSHL: laparoscopic spleen-preserving splenic hilar lymphadenectomy. LN: lymph node





Supplemental Figure 2A Dissection of splenic hilum using Huang's three-step robotic maneuver

Supplemental Figure 2B Dissection of LNs in the splenic hilar area is completed

Abbreviation: LN: lymph node

Supplemental Table 1 Comparison of the Early Group vs the Late Group: Operative and Postoperative Outcomes

Variable	EG (n=20)	LG (n=15)	P-value
OR time, min‡	195.4±28.7	173.5±40.3	0.070
EBL, ml‡	14.5±5.2	12.6±4.4	0.262
SHDT, min‡	22.8±3.5	17.2±3.9	<0.001
first step, min‡	10.0±3.4	6.3±2.3	0.010
second step, min‡	7.5±2.6	5.8±2.2	0.046
third step, min‡	5.2±1.2	5.2±2.9	0.915
SHBL, ml‡	2.4±1.9	1.9±2.6	0.505
No.10 retrieved LN‡	2.8±0.6	3.3±1.8	0.253
Total retrieved LNs‡	35.6±10.9	40.8±15.3	0.248
Complications	4(20%)	1(6.7%)	0.530
30-day mortality	0(0%)	0(0%)	

In-hospital mortality	0(0%)	0(0%)	
R0 negative margin	20(100%)	15(100%)	
LOS, day^a	11.5(9.3-18)	9(8-10)	0.034

OR: operation time, EBL: estimated blood loss, SHDT: splenic hilar dissection time, SHBL: splenic hilar blood loss, LOS: length of stay

‡ Values are mean ± SD

^a Values are median (IQR)