

Supplementary Table 1 Clinicopathological features of our cases

Feature	<i>n</i> (valid), <i>N</i> = 286 (mean ± SD)	Intestinal, <i>N</i> = 190	Diffuse, <i>N</i> = 96
Age (yr)	72.9 ± 12.28	75.3 ± 10.9	68 ± 13.5
Men	156 (54.9%)	109 (57.4%)	47 (50%)
Smoking			
Former	27 (9.5%)	14 (7.4%)	13 (13.7%)
Ex-smoker	73 (25.8%)	53 (28.2%)	20 (21.1%)
Drinking			
Former	27 (9.6%)	17 (9.1%)	10 (10.5%)
Ex-drinker	11 (3.9%)	8 (4.3%)	3 (3.2%)
Symptoms			
Symptomatic	211 (90.2%)	144 (90%)	67 (90.5%)
Local	152 (65.2%)	94 (59.1%)	58 (78.4%)
Systemic	126 (54.1%)	90 (56.6%)	36 (48.6%)
Size (mm)	43.5 ± 24.2	42.3 ± 23.7	45.7 ± 25.3
Depth (mm)	10.3 ± 4.7	9.4 ± 4.2	11.6 ± 5
Macroscopic type			
Polypoid	54 (20.2%)	38 (21%)	16 (18.6%)
Flat	32 (12%)	14 (7.7%)	18 (20.9%)
Ulcerative	85 (31.8%)	52 (28.7%)	33 (38.4%)
Fungoid	96 (36%)	77 (42.5%)	19 (22.1%)
Location			
Cardia	7 (2.7%)	6 (3.4%)	1 (1.1%)
Fundus	18 (6.8%)	14 (8%)	4 (4.4%)
Body	91 (34.5%)	64 (36.8%)	27 (30%)
Antrum	148 (56.1%)	90 (51.7%)	58 (64.4%)
Tumor grade (high)	-	32 (17.9%)	NS
Necrosis	63 (22%)	51 (26.8%)	12 (12.5%)
Vascular invasion	100 (35.1%)	61 (32.1%)	39 (41.1%)

Perineural infiltration	100 (35.1%)	50 (26.3%)	50 (52.7%)
Growth pattern (infiltrative)	-	78 (56.5%)	NS
Budding	-	29 (28.4%)	NS
Desmoplasia	102 (50.5%)	81 (61%)	21 (30.4%)
Intratumoral inflammation			
Mild	48 (22.7%)	24 (17.5%)	24 (32%)
High	127 (59.9%)	86 (62.8%)	41 (54.6%)
Peritumoral inflammation	65 (30.3%)	49 (35%)	16 (21.3%)
Microsatellite instability	49 (28.5%)	37 (34.6%)	12 (18.5%)
HERCEPTEST			
0	154 (91.1%)	90 (85.7%)	64 (100%)
1+	7 (4.1%)	7 (6.7%)	0 (0%)
2+	4 (2.4%)	4 (3.8%)	0 (0%)
3+	4 (2.4%)	4 (3.8%)	0 (0%)
T stage			
T1	48 (17%)	39 (20.6%)	9 (9.6%)
T2	57 (20.1%)	41 (21.7%)	16 (17%)
T3	134 (47.3%)	86 (45.5%)	48 (51.1%)
T4	44 (15.5%)	23 (12.2%)	21 (22.3%)
N stage			
N0	118 (42.8%)	89 (48.1%)	29 (31.9%)
N1	45 (16.3%)	32 (17.3%)	13 (14.3%)
N2	53 (19.2%)	29 (15.7%)	24 (26.4%)
N3	60 (21.7%)	35 (18.9%)	25 (27.5%)
TNM stage			
I	76 (27.7%)	57 (31%)	19 (21.1%)
II	87 (31.8%)	62 (33.7%)	25 (27.8%)
III	111 (40.5%)	65 (35.3%)	46 (51.5%)
Lymph nodes examined	21.64 ± 14.77	22.08 ± 16	20.76 ± 11.96
Metastatic lymph nodes	4.10 ± 6.47	3.34 ± 5.89	5.72 ± 7.31
Lymph node ratio	0.2 ± 0.26	0.15 ± 0.23	0.28 ± 0.3

Gastrectomy			
Subtotal	205 (72.7%)	142 (74.7%)	63 (68.5%)
Total	77 (27.3%)	48 (25.3%)	29 (31.5%)
Lymphadenectomy			
D1	48 (16.9%)	37 (19.5%)	11 (11.5%)
D2	79 (27.7%)	56 (29.5%)	23 (24%)
NS	158 (55%)	97 (51%)	61 (64.6%)
Adjuvant therapy	44 (18%)	22 (13.8%)	22 (25.6%)
Recurrence	96 (36.6%)	50 (28.9%)	46 (51.7%)
DFS (mean, months)	42.2 ± 44.9	42.8 ± 43.1	41.1 ± 48.5
DFS (median, months)	26	29.5	14
Death	64 (26.8%)	31 (19.6%)	33 (40.7%)
Overall survival (mean, months)	46.1 ± 44.5	46 ± 42	46.2 ± 49
Overall survival (median, months)	31	35	22

DFS: Disease-free survival; NS: Not specified; OS: Overall survival.

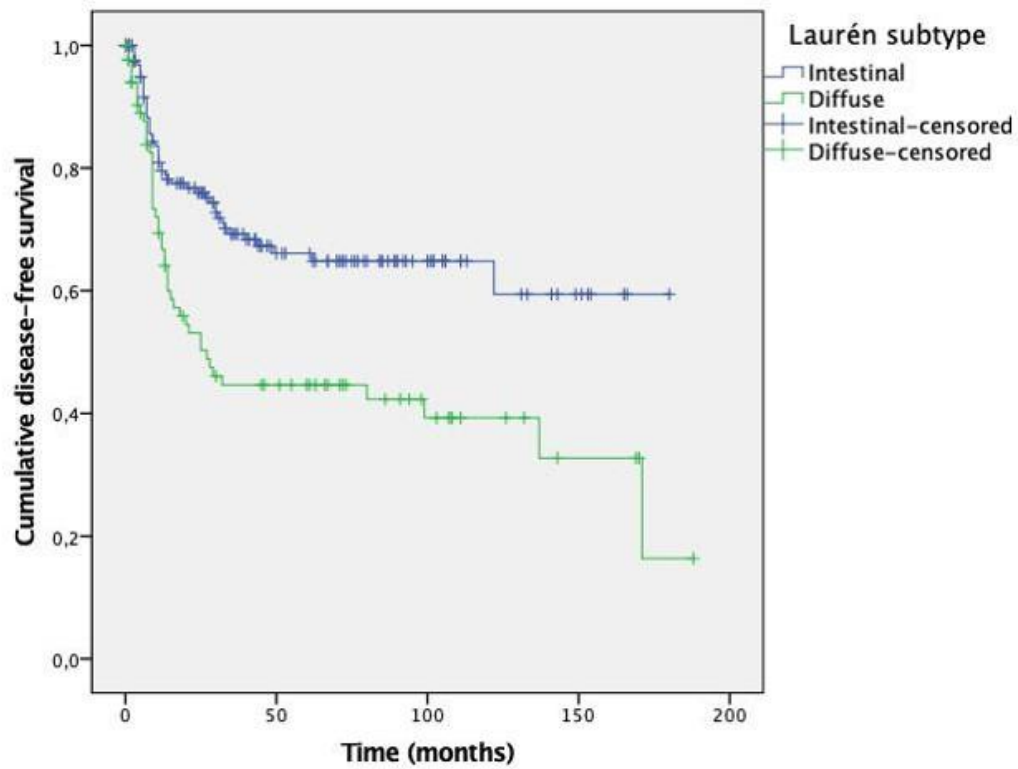
Supplementary Table 2 Clinicopathological features associated with tumor recurrence and cancer-specific death in intestinal-type and diffuse-type gastric cancer

Tumor recurrence	Cancer-specific death
Intestinal-type gastric cancer	
Perineural infiltration, $P = 0.002$	Growth pattern (infiltrative), $P = 0.010$
Vascular invasion, $P = 0.001$	Vascular invasion, $P = 0.010$
T stage, $P = 0.002$	T stage, $P = 0.001$
N stage, $P < 0.001$	N stage, $P < 0.001$
TNM stage, $P < 0.001$	TNM stage, $P < 0.001$
Lymph node ratio, $P < 0.001$	Lymph node ratio, $P = 0.001$
Budding, $P = 0.057$	Necrosis, $P = 0.088$
Microsatellite instability, $P = 0.084$	Microsatellite instability, $P = 0.096$
Diffuse-type gastric cancer	
Size, $P = 0.004$	Systemic symptoms, $P = 0.018$
T stage, $P = 0.031$	Necrosis, $P = 0.044$
N stage, $P = 0.023$	N stage, $P = 0.021$
TNM stage, $P = 0.028$	TNM stage, $P = 0.041$
LNR, $P = 0.003$	LNR, $P = 0.019$
	Size, $P = 0.08$
	Vascular invasion, $P = 0.059$
	T stage, $P = 0.058$

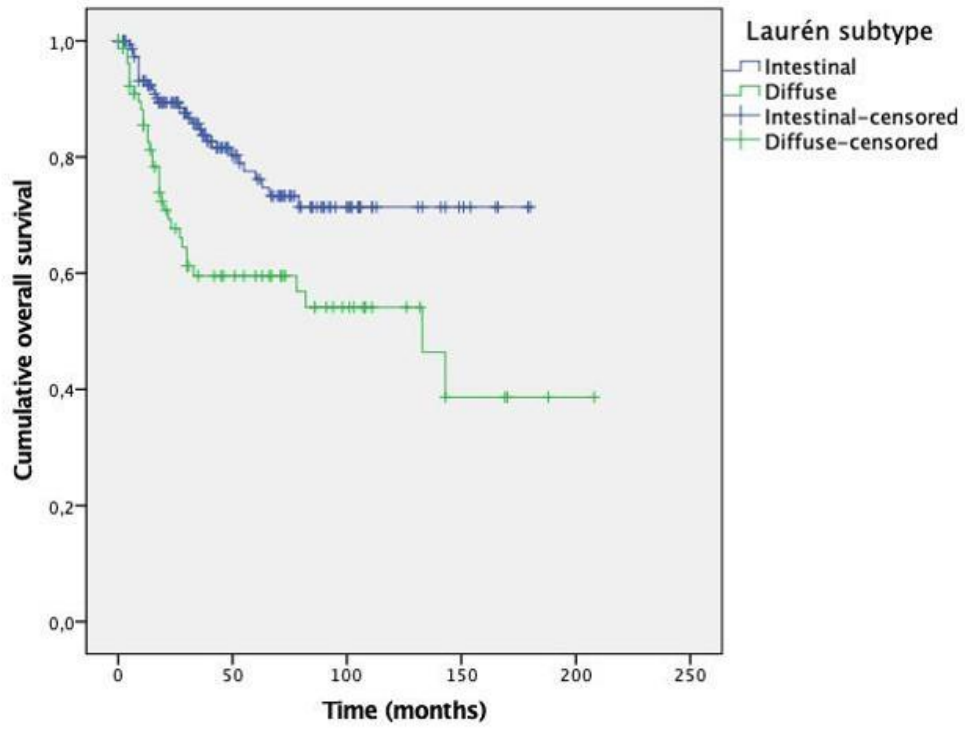
Supplementary Table 3 Receiver operating characteristic analyses

	Prognostic scores (intestinal)		Prognostic scores (diffuse)	
Tumor recurrence	0.745	(95%CI: 0.668-0.823)	0.674	(95%CI: 0.555-0.794)
Cancer specific death	0.763	(95%CI: 0.674-0.851)	0.710	(95%CI: 0.588-0.831)

Area under the curve of the prognostic scores.



Supplementary Figure 1 Disease-free survival curves according to Laurén subtype. *P* value by log-rank test was < 0.001.



Supplementary Figure 2 Overall survival curves according to Laurén subtype.

P value by log-rank test was < 0.001.