

Format for Manuscript Revision: Observational Study

Name of Journal: *World Journal of Gastroenterology*

Manuscript NO: 17612

Manuscript Type: ORIGINAL ARTICLE

Observational Study

Liver transplantation for biliary atresia: A single-center study from mainland China

Li QG *et al.* LT for BA in mainland China

Qi-Gen Li, Ping Wan, Jian-Jun Zhang, Qi-Min Chen, Xiao-Song Chen, Long-Zhi Han, Qiang Xia

Qi-Gen Li, Ping Wan, Jian-Jun Zhang, Xiao-Song Chen, Long-Zhi Han, Qiang Xia, Department of Liver Surgery, Ren Ji Hospital, School of Medicine, Shanghai Jiao Tong University, Shanghai 200127, China

Qi-Min Chen, Department of Pediatric Surgery, Shanghai Children's Medical Center, School of Medicine, Shanghai Jiao Tong University, Shanghai 200127, China

Author contributions: Xia Q was the guarantor and designed the study; Wan P and Li QG participated in the acquisition, analysis, and interpretation of the data, and drafted the initial manuscript; Zhang JJ, Chen QM, Chen XS, Han LZ revised the article critically for important intellectual content.

Supported by Key Joint Research Program of Shanghai Health Bureau, No. 2013ZYJB0001; and a subtopic of Scientific and Technological Innovation and Action Project of Shanghai Science and Technology Commission, No.

14411950404.

Corresponding author: Qiang Xia, Professor, Chief, Department of Liver Surgery, Ren Ji Hospital, School of Medicine, Shanghai Jiao Tong University, No. 1630 Dongfang Road, Shanghai 200127, China. xiaqiang@medmail.com.cn

Abstract

BACKGROUND

AIM

To summarize our single-center experience in liver transplantation (LT) for biliary atresia (BA).

METHODS

From October 2006 to December 2012, 188 children with BA were analyzed retrospectively. The stage I group (from October 2006 to December 2010) comprised the first 74 patients, and the stage II group (from January 2011 to December 2012) comprised the remaining 114 patients. Finally, 123 liver transplants were performed in 122 patients (64.9%), whereas 66 patients did not undergo LT due to denial by their parents or lack of suitable liver grafts. The selection of graft types depended on the patients' clinical status and whether a suitable living donor was available. The characteristics of patients in stages I and II were described, and the surgical outcomes of LT recipients were compared between the two stages. The Kaplan-Meier method was used to estimate the cumulative patient and graft survival rates, and the equality of survival distributions was evaluated using the log-rank test.

RESULTS

The 188 children consisted of 102 boys and 86 girls. Their ages ranged from 3 to 144 months with a median of 8 months. One hundred and fifteen patients (61.2%) were born in rural areas. Comparing stage I and stage II patients, the proportions of patients referred by pediatricians (43.2% *vs* 71.1%, respectively; $P < 0.001$) and the proportions of patients who previously received a Kasai procedure (KP) (32.4% *vs* 44.7%, respectively; $P = 0.092$) obviously increased, and significantly more parents were willing to treat their children with LT (73% *vs* 86%, respectively; $P = 0.027$). Grafts from living donors (102/122, 83.6%) were the most commonly used graft type. Surgical complications

(16/25, 64.0%) were the main reason for posttransplant mortality. Among the living donor liver transplantation recipients ($n = 102$), the incidence of surgical complications was significantly reduced (34.1% *vs* 15.5%, respectively; $P = 0.029$) and survival rates of patients and grafts were greatly improved (81.8% *vs* 89.7%, respectively, in 1 year; 75.0% *vs* 87.8%, respectively, in 3 year; $P = 0.107$) from stage I to stage II.

CONCLUSION

The status of surgical treatments for BA has been changing in mainland China. Favorable midterm outcomes after LT were achieved as centers gained greater technical experience.

Key words: Biliary atresia; Liver transplantation; Kasai; Living donor; Pediatric; Survival

Core tip: Biliary atresia (BA) accounts for at least 50% of the liver transplants performed in pediatric patients. However, in mainland China, various social, cultural and financial factors are responsible for a low diagnostic rate or a delayed Kasai procedure for children with BA. Pediatric liver transplantation has been progressing immensely in mainland China. In this study, we analyzed our single-center data of children with BA between 2006 and 2012, representing the largest series of BA patients in mainland China ever reported. Based on these data, socioeconomic backgrounds that impact the current status of surgical treatments for BA in mainland China were introduced.

INTRODUCTION

Biliary atresia (BA) is the most common cause of chronic cholestasis in infants, accounting for at least 50% of the liver transplants performed in pediatric patients. BA occurs in approximately 1:5000 to 1:19000 live births^[1-6]. In mainland China, large-scale epidemiological data are still not available; however, a huge population of children with BA can be presumed based on the 20 million newborns per year. Although the study by Alexopoulos et al^[7] suggested that patients who underwent salvage liver transplantation (LT) following a Kasai procedure (KP) might have a lower survival rate than those who directly proceeded to a transplant, the sequential surgical treatment with a KP followed by LT is currently accepted to be a conventional treatment strategy for most cases^[8,9]. However, in mainland China, various social, cultural and financial factors are responsible for a low diagnostic rate or a delayed KP for children with BA. Thus, many pediatric BA patients without a prior KP or with a failed KP are potential LT candidates in our country.

In recent years, pediatric LT has been progressing immensely in mainland China. However, to our knowledge, there are very few English language literature sources from mainland China concerning the diagnosis and surgical treatment of BA. It is essential to introduce these real things happening to this population and to help other peers understand these backgrounds and trends in China. Ren Ji Hospital (Shanghai) has been a pioneer for pediatric LT in mainland China since the first liver transplant for infantile patients was performed in October 2006 with the assistance of Professor Chao-Long Chen from Chang Gung Memorial Hospital (Taiwan). Here, we will retrospectively analyze our single-center data of children with BA between 2006 and 2012 and introduce the overall profile of surgical treatments for BA in mainland China.

MATERIALS AND METHODS

Study population and data collection

All pediatric transplant candidates at the Department of Liver Surgery, Ren Ji

Hospital (Shanghai) have been enrolled in our prospective database under the supervision of a full-time coordinator. The data of those who underwent LT were synchronized with the China Liver Transplant Registry (CLTR) online (<http://www.cltr.org/>), and those who did not receive a transplant were kept in our database. The clinical characteristics and surgical data of the patients were retrospectively reviewed from the database. From October 2006 to December 2012, 220 children with BA visited our clinic. Thirty-two cases were considered ineligible due to transfers to other centers or incomplete data. The remaining 188 cases were included in the analysis of this study, most of whom were confirmed with BA through liver biopsy or intraoperative cholangiography. Stage I (from October 2006 to December 2010) comprised the first 74 patients, while stage II (from January 2011 to December 2012) comprised the remaining 114 patients. The following patient information was described according to the different transplant stages: demographic characteristics, geographical location, place of birth (urban or rural), hospital class for the initial diagnosis, previous surgical history, et al. Finally, 123 liver transplants were performed in 122 patients (64.9%), and the patient characteristics and follow-up results were analyzed. Moreover, the annual caseloads were calculated to describe the time trends of transplants from 2006 to 2012.

Preoperative assessment and LT criteria

Patients received a series of laboratory and imaging tests for the assessment of the clinical status, and pediatric end-stage liver disease (PELD) scores and Child-Pugh scores were calculated to measure the illness severity. LT was recommended in only patients with decompensated liver cirrhosis. Selection of graft types depended on the patients' clinical status and whether a suitable living donor was available. The suitable age for a living donor ranged from 18 to 55 years. The quality, volume and anatomy of the donor liver were carefully evaluated through computed tomography (CT) angiography, and the liver-to-spleen ratio of CT values was used to evaluate

the fatty degeneration degree of the liver. If both the donor and recipient were considered to be in suitable conditions for living donor liver transplantation (LDLT), an ethical review would be arranged.

Operative techniques and immunosuppression

All of the surgical procedures were performed by specialists with experience in the pediatric LT technique at the Department of Liver Surgery, Ren Ji Hospital. For LDLT, intraoperative real-time cholangiography was indispensable and the cut-ultrasound aspiration was used in the donor operation, and then the graft was implanted into the recipient's abdominal cavity using the piggyback technique. The ex situ splitting technique was used for split liver transplantation (SLT), and classic orthotopic LT was performed for whole liver recipients. All patients underwent Roux-en-Y hepaticojejunostomy for bile duct reconstruction. Intraoperative color Doppler ultrasonography was performed to measure the blood flow velocity and pattern after the vascular anastomosis and abdominal wall closure. The severity of postoperative complications of the living donors was evaluated using the modified Clavien-Dindo classification^[10]. Organ donation or transplantation in the study was strictly implemented under the regulation of the Shanghai Organ Transplant Committee and Declaration of Helsinki. All of the living organs were donated with informed consent. Deceased donors involved in the study were obtained from brain-dead or non-heartbeating donors. The postoperative immunosuppression regimen was described previously^[11]. Briefly, the initial immunosuppressive therapy after LT consisted of a dual drug regimen of tacrolimus (0.15 mg/kg per day)/cyclosporine (5 mg/kg per day) combined with methylprednisolone (4 mg/kg per day). The target trough level for tacrolimus was 8-10 ng/mL during the first 30 d. The target C₀ and C₂ levels for cyclosporine were 150-200 ng/mL and 800-1200 ng/mL, respectively. The dose of methylprednisolone was gradually tapered by 4 mg per day and maintained with prednisone 2.5 mg daily taken orally. Prednisone was withdrawn within

3 months after LT. Additional mycophenolate mofetil was used when necessary.

Posttransplant follow-up

After discharge of the initial hospital stay, the patients were regularly followed up in the clinic weekly during the first 3 mo after LT, biweekly from the 4th to the 6th month, monthly from the 7th to the 12th month, and every 3 months thereafter. The following tests were performed at each follow-up visit: measurements of the height and body weight, serum liver and renal function tests, serological viral tests (cytomegalovirus and Epstein-Barr virus) and measurements of the serum levels of tacrolimus/cyclosporine. Abdominal sonography was performed every 3 mo during the first 2 years and annually thereafter. Serum tests for hepatitis B virus were performed for patients who received a hepatitis B core antibody (anti-HBc)-positive graft^[11]. Because children came from various parts of the country, some children had these tests performed at the local hospitals; however, the reports were regularly sent to us by facsimile or electronic mail, and any medication adjustments were made after a consultation with physicians at our department. The duration of survival was calculated from the time of LT until death or the last follow-up contact, and the cut-off date of follow-up was April 30, 2014. The follow-up period ranged from 0.1 to 90.3 mo, with a median of 28.6 months.

Statistical analysis

Statistical analysis was performed using SPSS 18.0 for Windows (SPSS Inc. Chicago, IL, United States). Categorical data were expressed as numbers with percentages, and continuous data were expressed as medians with a range. The survival rates of patients and grafts were plotted using Kaplan-Meier curves, and the differences in selected factors were evaluated using the log-rank test. P values less than 0.05 were considered to indicate statistical significance.

RESULTS

Overall characteristics of patients

The 188 BA patients comprised 102 boys and 86 girls, with a median age of 8 months (range: 3 to 144 mo) at the initial consultation at our hospital. Patients were distributed throughout the mainland, and most of them (45.2%) came from provinces close to Shanghai (East China) (Figure 1). One hundred and fifteen patients (61.2%) were born in rural areas, and 73 patients (38.8%) came from urban areas. The caseload of LT for BA showed a trend of an annual increase. During the last two years, the rapid growth of case numbers and the increase in donation types were obvious (Figure 2). The first SLT and whole liver transplantation (WLT) for BA patients were performed in December 2010 and January 2012, respectively. In this cohort, grafts from living donors were the only graft type used before 2010, and LDLT accounted for 93.2% (12 cases), 67.6% (25 cases), and 82.5% (33 cases) of liver transplants for BA in 2010, 2011, and 2012, respectively.

Previous treatment and changes between stages I and II

One hundred and thirty-eight patients (73.4%) were initially seen at a class I or II hospital, and 34.8% (48/138) of them were transferred to class III hospitals to receive KP; on the other hand, 50 patients (26.6%) were initially treated at a class III hospital, with 54.0% (27/50) of them directly proceeding to a KP. Thus, a total of 75 patients (39.9%) in this study had a history of a prior KP, and patients who initially visited a class III hospital showed a significantly higher proportion undergoing KP than those initially seen at a class I or II hospital ($P = 0.017$). Comparing patients from rural areas with those from urban areas, urban patients were more inclined to directly go to a class III hospital for medical support (13.9% vs 46.6%, respectively; $P < 0.001$), and KP was more frequently performed in urban children than in rural children (43.8% vs 37.4%, respectively; $P = 0.379$). Additionally, rural parents were more likely to refuse LT treatment than urban parents (62.8% vs 39.1%, respectively; $P = 0.066$).

The changes and trends of the patient characteristics between stages I and II are summarized in Table 1. In stage II, the proportion of BA patients referred by pediatricians was significantly higher than that in stage I (71.1% vs 43.2%, respectively; $P < 0.001$). Parents who refused LT treatment for their children decreased significantly from stage I to stage II (27.0% vs 14.0%, respectively; $P = 0.027$), and the lack of organ sources became the predominant cause for pretransplant deaths of patients in stage II. Furthermore, patients who had a prior history of KP showed a slightly higher proportion in stage II than in stage I (44.7% vs 32.4%, respectively; $P = 0.092$). Figure 3 shows the flowchart providing outcomes of the 188 BA patients.

Characteristics of LT recipients and living donors

A total of 122 patients finally underwent LT, including 102 LDLT recipients (83.6%), 19 SLT recipients (15.6%) and 1 WLT recipient (0.8%). The median age when the transplant occurred was 9.4 months (range: 4.5 to 118.4 mo). Seventy-four recipients (60.7%) did not undergo KP before LT, and their median age at the consultation at our hospital was 8.2 months (range: 4.1 to 31.0 mo). For the 48 recipients with a prior KP (39.3%), the median age at KP was 73.5 days (range: 27 to 845 d), and only 13 patients (10.7%) underwent KP within 60 days of age. The median ages at LT for patients with a KP before 60 days ($n = 13$), patients with a KP after 60 days ($n = 35$) and patients without a prior KP ($n = 74$) were 20.4 months (range: 6.3 to 118.4 mo), 14.2 mo (range: 5.7 to 82.0 mo), and 8.5 mo (range: 4.5 to 31.1 mo), respectively ($P < 0.001$).

The baseline characteristics of the recipients and grafts are shown in Table 2. In the SLT group, 17 infants shared 17 whole livers with adult recipients, and a 920-g whole liver was shared by a 6-year-old girl and a 2-year-old boy. The characteristics and outcomes of the 102 living donors are summarized in Table 3. No deaths or major complications occurred in the living donors after surgery, but 4 donors (3.9%) experienced minor complications, including wound infections and pulmonary infections.

Postoperative complications after LT

The management and outcomes of the posttransplant complications are listed in Table 4. By the last follow-up contact, 12 stage I recipients (26.7%) and 13 stage II recipients (16.9%) died of postoperative complications, and 1 stage I patient underwent retransplantation 61 months after the primary LT due to a severe biliary complication. Among them, 16 deaths (16/25, 64.0%) were caused by surgical complications. Therefore, surgical complications were the main reason for posttransplant mortality, but the incidence of surgical complications was greatly reduced with greater technical experience. In this cohort, 15 stage I patients (33.3%) and 14 stage II patients (18.2%) experienced one or more surgical complications ($P = 0.058$). Furthermore, the incidence of surgical complications was significantly decreased from 34.1% (15/44) in stage I to 15.5% (9/58) in stage II within the LDLT group ($n = 102$; $P = 0.029$). Regarding non-surgical complications, stage II recipients also had greatly improved outcomes compared with stage I recipients.

Posttransplant survival

The 1-, 3-, and 5-year patient and graft survival rates of the 122 LT recipients were 83.6%, 80.0%, and 76.9%, respectively. Although the difference between the survival rates after LDLT and SLT did not reach statistical significance ($P = 0.133$), LDLT conferred a 14.4% survival benefit in the 3-year survival rate compared with SLT (82.1% vs 67.7%); thus, the LDLT recipients were expected to achieve a more favorable prognosis than those who underwent SLT (Figure 4A). The survival rates of patients who proceeded directly to LT ($n = 74$) were comparable to those with a prior KP ($n = 48$) (Figure 4B; 82.4% vs 85.4% in 1 year, respectively; 80.8% vs 71.2% in 5 years, respectively; $P = 0.701$). Because most SLT (18 of 19) were performed in stage II, the survival benefit from stage II was diminished compared with that in stage I (Figure 4C; $P = 0.358$). However, the patient and graft survival rates after LDLT were greatly improved because our center gained greater experience with LDLT from stage I to stage II (Figure 4D; 81.8% vs 89.7% in 1 year, respectively; 75.0% vs 87.8%

in 3 years, respectively; $P = 0.107$).

DISCUSSION

China is a vast country consisting of 28 provinces and 4 municipalities. There are large discrepancies in the socioeconomic development between coastal areas in the east and inland areas in the west. Presently, more than half of the Chinese population live in rural areas^[12]. On the other hand, pediatric congenital diseases occur much more commonly in rural populations because neonatal screening for congenital diseases is not conducted in most rural areas^[13-15]. Medical services provided by the hospitals in different areas are unequal, and well-equipped healthcare facilities are usually not available in rural areas. Moreover, the Chinese household registration system (known as “*huj*”) officially identifies a person as a resident of a certain area, and residents from different areas are enrolled in different medical insurance coverage, which depends on the financial condition of the local area. For most rural families, the parents are financially responsible for their children’s medical expenses. When facing a high medical expense, very few of these parents can afford the treatment cost in the hospital. As a result, a large proportion of children with BA could not get timely diagnoses and surgical interventions when necessary medical care is required. In mainland China, at least 1500 new cases of BA occur every year as calculated by the recognized incidence of BA. However, the recognition rate of BA is less than 50%, and most children with BA in mainland China die without any surgical interventions. These factors have led to a low rate of BA diagnoses, a low rate of the KP performance and a low rate of post-KP jaundice clearance.

Currently, Kasai's portoenterostomy has gained worldwide acceptance as the initial surgical therapy for BA infants^[16]. However, it was reported that only 17% of BA patients who were treated with KP could achieve long-term transplant-free survival, and even these patients require assiduous lifelong care^[17]. Therefore, KP is considered as a transitional treatment for BA before LT because the transplant operation is not well-tolerated for most infants

aged less than 6 months. Data from the Netherlands Study Group of Biliary Atresia and Registry (NeSBAR) indicated that KP should be performed before 60 days of age to obtain an acceptable transplant-free survival^[18], and a late referral for KP was associated with poor outcomes. However, in mainland China, specialized children's hospitals that are qualified to perform KP are available in only several well-developed cities such as Beijing, Shanghai, Guangzhou, Hangzhou, Chongqing *et al.* Delayed referral for a KP produced a phenomenon that BA patients in mainland China had their transplantations fairly early. Our data showed that only 10.7% of children with BA were treated with KP before 60 days of age and that 60.7% of children who did not undergo KP before LT had their liver functions irreversibly deteriorated and lost the chance to receive a KP.

In developed countries and regions, the pretransplant conditions of BA patients are completely different, and more than 80% of LT recipients had a prior KP before LT. Nonetheless, the patient age at KP is considered as the key determinant for the post-KP patient survival with their native liver^[9,19-21]. In Taiwan, a universal stool color screening system was established for the neonatal population since 2004, which has greatly reduced the proportion of late referrals for infants with BA^[22-24]. The success rate of KP could be improved by enhancing the early referral, and better postoperative outcomes of children with BA could be obtained by the timely performance of KP^[25]. In the United Kingdom, surgical outcomes have been improved by the centralization of care to supra-regional centers^[26]. Moreover, a French study reported that the caseload experience of KP influenced the patient prognosis with centers managing more than 20 cases per year associated with better outcomes^[27].

In mainland China, the development of pediatric LT has lagged behind that of adult LT during the past two decades^[28]. Pediatric transplants are performed at large transplant centers which mainly engage in adult transplantation, and the children's hospitals are not authorized to perform LT. There is little communication between pediatricians and transplant surgeons.

Additionally, most families prefer to bear another child rather than choose transplantation when they are confronted with the high cost and the “one child policy”. However, recent changes in these situations are encouraging and gratifying with increasingly more attention from society being paid to this group of patients. Pediatric LT in our country has undergone immense progress in recent years. Our hospital is currently the largest transplant center for pediatric LT in mainland China. We work in close collaboration with Shanghai Children’s Medical Center to enable children to maximize the benefit gained from surgery. In this study, the annual caseload was hugely increased, the postoperative outcomes were greatly improved in stage II patients, particularly for LDLT recipients, and the 3-year patient and graft survival rates after LDLT reached 87.8%, which was comparable to those of developed countries^[29,30]. This progress was mainly attributed to the following factors: (1) our results in stage I enhanced the understanding of transplantation by parents and pediatricians and promoted their willingness for referral or acceptance; (2) some charitable organizations voluntarily provided financial support during stage II; (3) grafts from deceased donors have been used since December 2010 to expand the donor pool for recipients without a suitable living donor; and (4) improvements in surgical techniques and posttransplant management with feedback on the long-term outcomes significantly decreased the incidence of posttransplant complications.

Although the shortage of deceased donors is a universal problem, the situation is particularly serious in Asia for various social, cultural, and historical reasons. Thus, the living donor was the only graft type available for most recipients in this study, and grafts from cadaveric organ donations were mostly used by patients without a suitable living donor. However, the LDLT recipients would have priority in acquiring financial support. It was shown in our previous work that the LDLT benefit was magnified with respect to hospital mortality, postoperative hospitalization rates, and midterm survival as centers gained greater surgical experience^[31]. Thus, the postoperative outcomes in stage I were relatively unfavorable due to the effect of the

learning curve. Specifically, the retransplantation rate is extremely low in mainland China, which is also influenced by the aforementioned socioeconomic factors, and only 1 patient underwent retransplantation in this study. This report provides a general description of surgical treatments for BA in mainland China based on our single-center experience. Conceivably, some effective steps ought to be taken in the future: (1) a nationwide BA screening system should be established; (2) medical insurance should cover all children from different areas; (3) timely referrals must be executed between junior and senior hospitals; and (4) close communication and cooperation should be promoted between pediatricians and transplant surgeons.

CONCLUSION

In conclusion, many children with BA in mainland China could not receive a timely KP due to various socioeconomic factors, but the situation has been changing. LT for BA could yield favorable outcomes through the accumulation of experience. Grafts from living donors are currently the most commonly used graft type for children with BA, and the 3-year patient and graft survival rates of 87.8% could be achieved by LDLT recipients. However, efforts should be directed to enhance the disease screening and insurance coverage for children with BA.

ARTICLE HIGHLIGHTS

At present, researchers often read a scientific paper in the order of title, abstract, keywords, introduction, materials and methods, results, discussion, conclusions, and references. However, this reading order is associated with many deficiencies, because most researchers are very busy and cannot read the entire paper carefully. In contrast, authors hope that readers will read their papers as carefully as possible at the earliest time after publication, and that this reading will give a meaningful understanding of the paper's topic so that the reader will repeat or cite their work.

In order to help more readers to find what they want to read in the shortest possible time, we have added a section known as ‘Article Highlights’ to every paper published by BPG journals; this section will appear before the References section. This new section will consist of summarized information on the research background, motivation, objectives, methods, results, conclusions, and perspectives; the subsections will be titled accordingly (*e.g., Research background, Research motivation, etc.*; see below). Each of these subsections should be a clear and concise but sufficiently detailed summary of the information provided in the guidelines below (1-4 sentences for each subsection should suffice). This section should not be a verbatim (copy-paste) repeat of the full text in the manuscript’s main text sections (*i.e.* Methods, Results, or Conclusion).

The content of Article Highlights will also be released through media including WeChat message forwarding, WeChat public number, Quick Response code, E-mail, Facebook, Twitter, and Google. The guidelines for writing and formatting Article Highlights are as follows:

Research background

The background, present status, and significance of the study should be described in detail.

Research motivation

The main topics, the key problems to be solved, and the significance of solving these problems for future research in this field should be described in detail.

Research objectives

The main objectives, the objectives that were realized, and the significance of realizing these objectives for future research in this field should be described in detail.

Research methods

The research methods (*e.g.*, experiments, data analysis, surveys, and clinical trials) that were adopted to realize the objectives, as well as the characteristics and novelty of these research methods, should be described in detail.

Research results

The research findings, their contributions to the research in this field, and the problems that remain to be solved should be described in detail.

Research conclusions

The most relevant of the following questions should be briefly answered:

What are the new theories that this study proposes?

What are the new methods that this study proposed?

Research perspectives

The most relevant of the following questions should be briefly answered:

What is the direction of the future research?

ACKNOWLEDGEMENTS

The authors would like to thank the members of the Endoscopic Unit, and Cell Analysis Laboratory, 2nd Department of Internal Medicine, and the 1st Department of Pathology and Experimental Oncology, Semmelweis University for their technical support. The authors also thank Ms. Anika Scott for her careful language assistance.

REFERENCES

- 1 **Balistreri WF**, Grand R, Hoofnagle JH, Suchy FJ, Ryckman FC, Perlmutter DH, Sokol RJ. Biliary atresia: current concepts and research directions. Summary of a symposium. *Hepatology* 1996; **23**: 1682-1692 [PMID: 8675193 DOI: 10.1002/hep.510230652]
- 2 **McKiernan PJ**, Baker AJ, Kelly DA. The frequency and outcome of biliary

atresia in the UK and Ireland. *Lancet* 2000; **355**: 25-29 [PMID: 10615887 DOI: 10.1016/S0140-6736(99)03492-3]

3 **Chardot C**, Carton M, Spire-Bendelac N, Le Pommelet C, Golmard JL, Auvert B. Epidemiology of biliary atresia in France: a national study 1986-96. *J Hepatol* 1999; **31**: 1006-1013 [PMID: 10604573 DOI: 10.1016/S0168-8278]

4 **Chardot C**, Buet C, Serinet MO, Golmard JL, Lachaux A, Roquelaure B, Gottrand F, Broué P, Dabadie A, Gauthier F, Jacquemin E. Improving outcomes of biliary atresia: French national series 1986-2009. *J Hepatol* 2013; **58**: 1209-1217 [PMID: 23402746 DOI: 10.1016/j.jhep.2013.01.040]

5 **Yoon PW**, Bresee JS, Olney RS, James LM, Khoury MJ. Epidemiology of biliary atresia: a population-based study. *Pediatrics* 1997; **99**: 376-382 [PMID: 9041292 DOI: 10.1542/peds.99.3.376]

6 **Livesey E**, Cortina Borja M, Sharif K, Alizai N, McClean P, Kelly D, Hadzic N, Davenport M. Epidemiology of biliary atresia in England and Wales (1999-2006). *Arch Dis Child Fetal Neonatal Ed* 2009; **94**: F451-F455 [PMID: 19457876 DOI: 10.1136/adc.2009.159780]

7 **Alexopoulos SP**, Merrill M, Kin C, Matsuoka L, Dorey F, Concepcion W, Esquivel C, Bonham A. The impact of hepatic portoenterostomy on liver transplantation for the treatment of biliary atresia: early failure adversely affects outcome. *Pediatr Transplant* 2012; **16**: 373-378 [PMID: 22463739 DOI: 10.1111/j.1399-3046.2012.01677.x]

8 **Otte JB**, de Ville de Goyet J, Reding R, Hausleithner V, Sokal E, Chardot C, Debande B. Sequential treatment of biliary atresia with Kasai portoenterostomy and liver transplantation: a review. *Hepatology* 1994; **20**: 41S-48S [PMID: 8005579 DOI: 10.1002/hep.1840200711]

9 **Altman RP**, Lilly JR, Greenfeld J, Weinberg A, van Leeuwen K, Flanigan L. A multivariable risk factor analysis of the portoenterostomy (Kasai) procedure for biliary atresia: twenty-five years of experience from two centers. *Ann Surg* 1997; **226**: 348-53; discussion 353-5 [PMID: 9339941 DOI: 10.1016/S0022-3468]

10 **Dindo D**, Demartines N, Clavien PA. Classification of surgical

complications: a new proposal with evaluation in a cohort of 6336 patients and results of a survey. *Ann Surg* 2004; **240**: 205-213 [PMID: 15273542 DOI: 10.1097/01.sla.0000133083.54934.ae]

11 **Xi ZF**, Xia Q, Zhang JJ, Chen XS, Han LZ, Zhu JJ, Wang SY, Qiu de K. De novo hepatitis B virus infection from anti-HBc-positive donors in pediatric living donor liver transplantation. *J Dig Dis* 2013; **14**: 439-445 [PMID: 23638710 DOI: 10.1111/1751-2980.12066]

12 **Rudan I**, Chan KY, Zhang JS, Theodoratou E, Feng XL, Salomon JA, Lawn JE, Cousens S, Black RE, Guo Y, Campbell H; WHO/UNICEF's Child Health Epidemiology Reference Group (CHERG). Causes of deaths in children younger than 5 years in China in 2008. *Lancet* 2010; **375**: 1083-1089 [PMID: 20346815 DOI: 10.1016/S0140-6736(10)60060-8]

13 **Wang Y**, Zhu J, He C, Li X, Miao L, Liang J. Geographical disparities of infant mortality in rural China. *Arch Dis Child Fetal Neonatal Ed* 2012; **97**: F285-F290 [PMID: 22247413 DOI: 10.1136/archdischild-2011-300412]

14 **Ma Y**, Guo S, Wang H, Xu T, Huang X, Zhao C, Wang Y, Scherpbier RW, Hipgrave DB. Cause of death among infants in rural western China: a community-based study using verbal autopsy. *J Pediatr* 2014; **165**: 577-584 [PMID: 24929335 DOI: 10.1016/j.jpeds.2014.04.047]

15 **Feng XL**, Guo S, Hipgrave D, Zhu J, Zhang L, Song L, Yang Q, Guo Y, Ronsmans C. China's facility-based birth strategy and neonatal mortality: a population-based epidemiological study. *Lancet* 2011; **378**: 1493-1500 [PMID: 21924764 DOI: 10.1016/S0140-6736(11)61096-9]

16 **Oh M**, Hobeldin M, Chen T, Thomas DW, Atkinson JB. The Kasai procedure in the treatment of biliary atresia. *J Pediatr Surg* 1995; **30**: 1077-180; discussion 1077-180; [PMID: 7472936 DOI: 10.1016/0022-3468(95)90345-3]

17 **Lykavieris P**, Chardot C, Sokhn M, Gauthier F, Valayer J, Bernard O. Outcome in adulthood of biliary atresia: a study of 63 patients who survived for over 20 years with their native liver. *Hepatology* 2005; **41**: 366-371 [PMID: 15660386 DOI: 10.1002/hep.20547]

18 **de Vries W**, de Langen ZJ, Groen H, Scheenstra R, Peeters PM, Hulscher JB,

Verkade HJ; Netherlands Study Group of Biliary Atresia and Registry (NeSBAR). Biliary atresia in the Netherlands: outcome of patients diagnosed between 1987 and 2008. *J Pediatr* 2012; **160**: 638-644.e2 [PMID: 22082947 DOI: 10.1016/j.jpeds.2011.09.061]

19 **Tessier ME**, Harpavat S, Shepherd RW, Hiremath GS, Brandt ML, Fisher A, Goss JA. Beyond the Pediatric end-stage liver disease system: solutions for infants with biliary atresia requiring liver transplant. *World J Gastroenterol* 2014; **20**: 11062-11068 [PMID: 25170195 DOI: 10.3748/wjg.]

20 **Serinet MO**, Wildhaber BE, Broué P, Lachaux A, Sarles J, Jacquemin E, Gauthier F, Chardot C. Impact of age at Kasai operation on its results in late childhood and adolescence: a rational basis for biliary atresia screening. *Pediatrics* 2009; **123**: 1280-1286 [PMID: 19403492 DOI: 10.1542/peds.2008-]

21 **Schreiber RA**, Barker CC, Roberts EA, Martin SR, Alvarez F, Smith L, Butzner JD, Wrobel I, Mack D, Moroz S, Rashid M, Persad R, Levesque D, Brill H, Bruce G, Critch J; Canadian Pediatric Hepatology Research Group. Biliary atresia: the Canadian experience. *J Pediatr* 2007; **151**: 659-65, 665.e1 [PMID: 18035148 DOI: 10.1016/j.jpeds.2007.05.051]

22 **Hsiao CH**, Chang MH, Chen HL, Lee HC, Wu TC, Lin CC, Yang YJ, Chen AC, Tiao MM, Lau BH, Chu CH, Lai MW; Taiwan Infant Stool Color Card Study Group. Universal screening for biliary atresia using an infant stool color card in Taiwan. *Hepatology* 2008; **47**: 1233-1240 [PMID: 18306391 DOI: 10.1002/hep.22182]

23 **Tseng JJ**, Lai MS, Lin MC, Fu YC. Stool color card screening for biliary atresia. *Pediatrics* 2011; **128**: e1209-e1215 [PMID: 22025588 DOI: 10.1542/peds.2010-3495]

24 **Chiu CY**, Chen PH, Chan CF, Chang MH, Wu TC; Taiwan Infant Stool Color Card Study Group. Biliary atresia in preterm infants in Taiwan: a nationwide survey. *J Pediatr* 2013; **163**: 100-3.e1 [PMID: 23414661 DOI: 10.1016/j.jpeds.2012.12.085]

25 **Gu YH**, Yokoyama K, Mizuta K, Tsuchioka T, Kudo T, Sasaki H, Nio M,

Tang J, Ohkubo T, Matsui A. Stool color card screening for early detection of biliary atresia and long-term native liver survival: a 19-year cohort study in Japan. *J Pediatr* 2015; **166**: 897-902.e1 [PMID: 25681196 DOI: 10.1016/j.jpeds.2014.]

26 **Davenport M**, De Ville de Goyet J, Stringer MD, Mieli-Vergani G, Kelly DA, McClean P, Spitz L. Seamless management of biliary atresia in England and Wales (1999-2002). *Lancet* 2004; **363**: 1354-1357 [PMID: 15110492 DOI: 10.1016/S0140-6736(04)16045-5]

27 **Serinet MO**, Broué P, Jacquemin E, Lachaux A, Sarles J, Gottrand F, Gauthier F, Chardot C. Management of patients with biliary atresia in France: results of a decentralized policy 1986-2002. *Hepatology* 2006; **44**: 75-84 [PMID: 16799986 DOI: 10.1002/hep.21219]

28 **Zhou J**, Shen Z, He Y, Zheng S, Fan J. The current status of pediatric liver transplantation in Mainland China. *Pediatr Transplant* 2010; **14**: 575-582 [PMID: 20557474 DOI: 10.1111/j.1399-3046.2010.01340.x]

29 **Barshes NR**, Lee TC, Balkrishnan R, Karpen SJ, Carter BA, Goss JA. Orthotopic liver transplantation for biliary atresia: the U.S. experience. *Liver Transpl* 2005; **11**: 1193-1200 [PMID: 16184564 DOI: 10.1002/lt.20509]

30 **Fouquet V**, Alves A, Branchereau S, Grabar S, Debray D, Jacquemin E, Devictor D, Durand P, Baujard C, Fabre M, Pariente D, Chardot C, Dousset B, Massault PP, Bernard D, Houssin D, Bernard O, Gauthier F, Soubrane O. Long-term outcome of pediatric liver transplantation for biliary atresia: a 10-year follow-up in a single center. *Liver Transpl* 2005; **11**: 152-160 [PMID: 15666395 DOI: 10.1002/lt.20358]

31 **Wan P**, Yu X, Xia Q. Operative outcomes of adult living donor liver transplantation and deceased donor liver transplantation: a systematic review and meta-analysis. *Liver Transpl* 2014; **20**: 425-436 [PMID: 24478109 DOI: 10.1002/lt.23836]

Footnotes

Institutional review board statement: The study was reviewed and approved by the Science and Research Office of Ren Ji Hospital (Shanghai).

Informed consent statement: All study participants, or their legal guardian, provided informed written consent prior to study enrollment.

Conflict-of-interest statement: There are no conflicts of interest to report.

Data sharing statement: No additional data are available.

STROBE statement: The authors have read the STROBE Statement – checklist of items, and the manuscript was prepared and revised according to the STROBE Statement – checklist of items.

Figure Legends

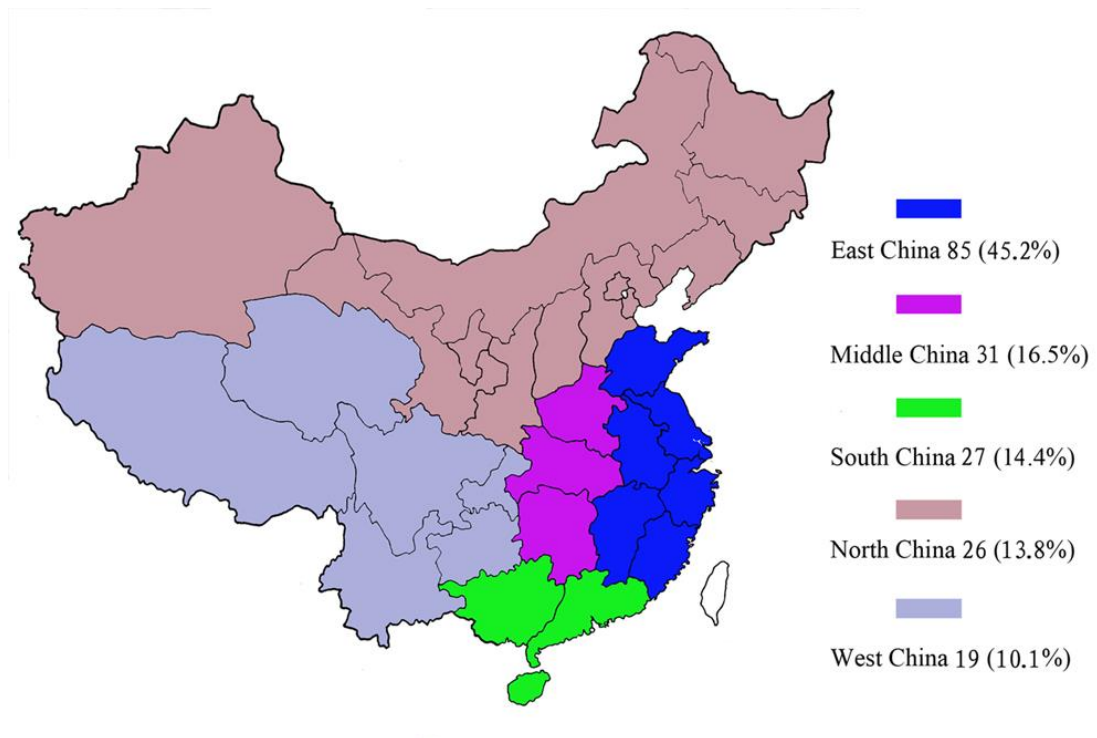


Figure 1 Geographical distribution of children with biliary atresia ($n = 188$).

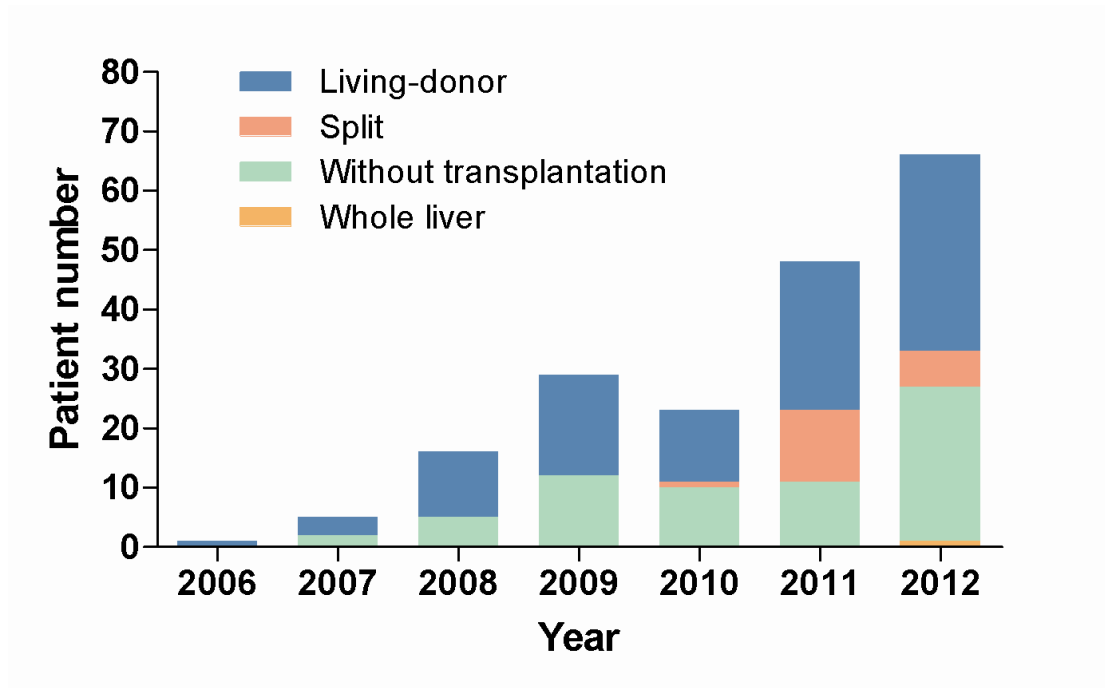


Figure 2 Caseload of children with biliary atresia from 2006 to 2012 ($n = 188$).

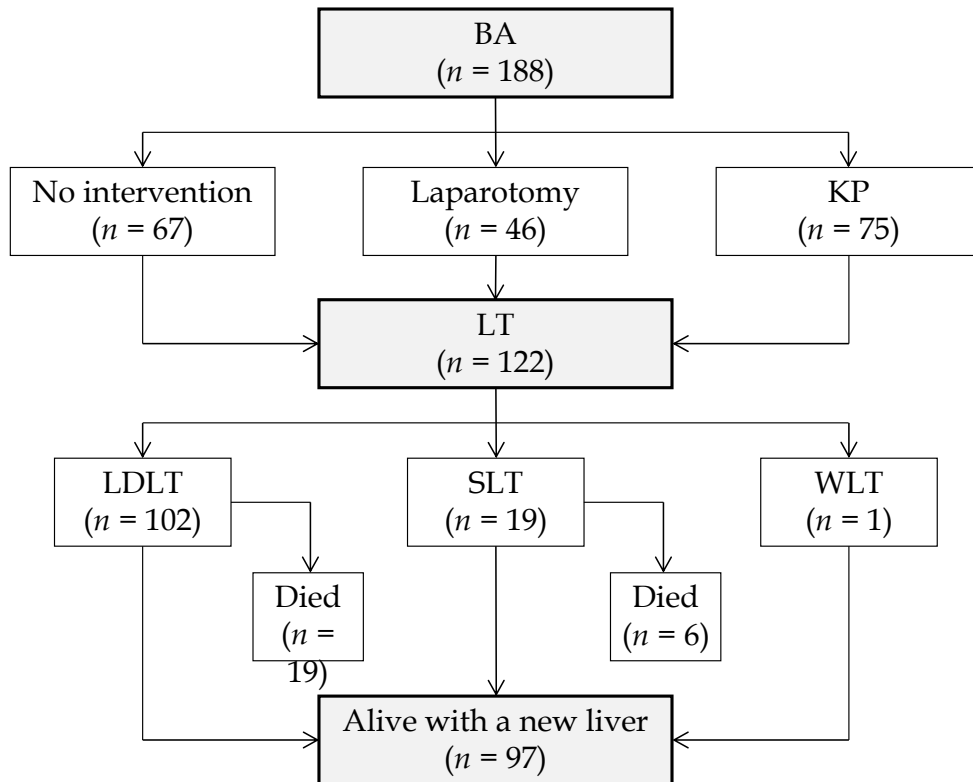


Figure 3 Flowchart providing outcomes of children with biliary atresia. BA: Biliary atresia; KP: Kasai procedure; LDLT: Living donor liver transplantation; LT: Liver transplantation; SLT: Split liver transplantation; WLT: Whole liver transplantation.

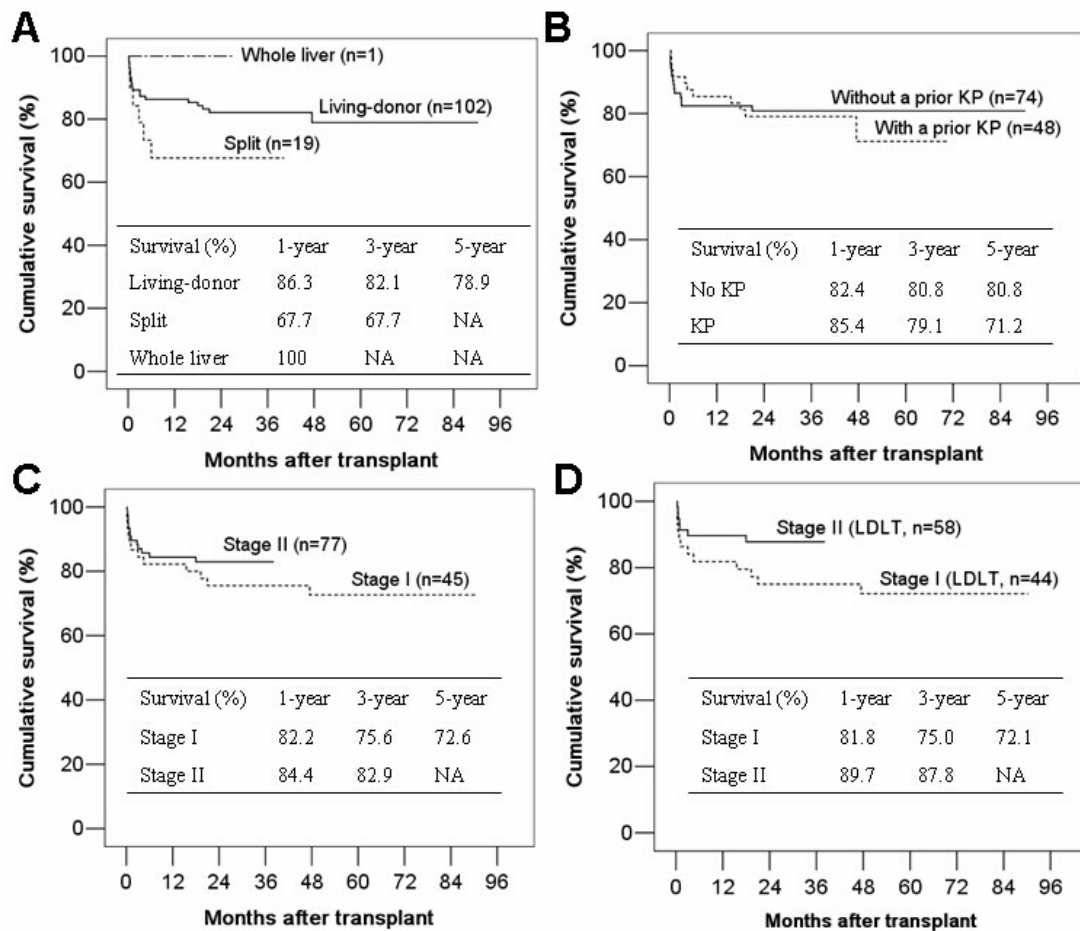


Figure 4 Patient and graft survivals after liver transplantation for biliary atresia ($n = 122$). A: Comparison between patients using different donor types ($P = 0.286$); B: Comparison between patients with or without a prior Kasai procedure (KP) ($P = 0.701$); C: Comparison between patients in stages I and II ($P = 0.358$); D: Comparison between the two stages within the living donor liver transplantation (LDLT) group ($P = 0.107$). NA: Not available.

Table 1 Characteristics of children with biliary atresia in stages I and II (*n* = 188), *n* (%)

Variable	Stage I (<i>n</i> = 74)	Stage II (<i>n</i> = 114)	<i>P</i>-value
Gender			0.146
Boys	45 (60.8)	57 (50.0)	
Girls	29 (39.2)	57 (50.0)	
Age			0.315
≤ 12 mo	53 (71.6)	89 (78.1)	
> 12 mo	21 (28.4)	25 (21.9)	
Place of birth			0.698
Rural	44 (59.5)	71 (62.3)	
Urban	30 (40.5)	43 (37.7)	
Hospital class for initial treatments			0.072
I or II	49 (66.2)	89 (78.1)	
III	25 (33.8)	25 (21.9)	
Previous surgical intervention			
None	28 (37.9)	39 (34.2)	0.612
Laparotomy	22 (29.7)	24 (21.1)	0.176
KP	24 (32.4)	51 (44.7)	0.092
Referral for transplantation			<0.001
Referred	32 (43.2)	81 (71.1)	
Non-referred	42 (56.8)	33 (28.9)	
Reason for no transplantation			
Refusal by the parents	20 (27.0)	16 (14.0)	0.027
Lack of a suitable graft	9 (12.2)	21 (18.4)	0.252

KP: Kasai procedure.

Table 2 Baseline characteristics of liver transplantation recipients with biliary atresia (*n* = 122)

Variable	Living-donor (<i>n</i> = 102)	Split (<i>n</i> = 19)	Whole liver (<i>n</i> = 1)
Gender			
Boys	57 (55.9)	7 (36.8)	1
Girls	45 (44.1)	12 (63.2)	0
Age (mo)	9.3 (4.5-70.1)	10.5 (5.6-118.4)	7.8
Body weight (kg)	8.0 (5-19)	8.0 (6-28)	10.0
Height (cm)	67 (56-108)	67 (62-115)	70
PELD score	17 (-9-36)	16 (-7-36)	21
Surgical history			
KP	42 (41.2)	6 (31.6)	0
Laparotomy	29 (28.4)	6 (31.6)	0
ABO blood group			
A	34 (33.3)	4 (21.1)	0
B	27 (26.5)	4 (21.1)	0
AB	11 (10.8)	5 (26.3)	1
O	30 (29.4)	6 (31.5)	0
Graft types			
Whole liver	0	0	1
LLS	99	17	0
Left lobe without MHV	2	1	0
Left lobe with MHV	1	0	0
Extended right lobe	0	1	0
GRWR (%)	2.7 (1.5-5.4)	2.7 (1.1-4.2)	4.0

The values are expressed as numbers (%) or medians (range). GRWR: Graft-to-recipient body weight ratio; KP: Kasai procedure; LLS: Left lateral segment; MHV: Middle hepatic vein; PELD: Pediatric end-stage liver disease.

Table 3 Characteristics of living donors (*n* = 102)

Variable	
Age (yr)	30 (20-56)
Gender	
Male	43 (42.2)
Female	59 (57.8)
BMI (kg/m ²)	21.4 (16.9-27.5)
D/R ABO compatibility	
Identical	78 (76.5)
Compatible	24 (23.5)
D/R relationship	
Parent	94 (92.1)
Grandparent	6 (5.9)
Uncle/Aunt	2 (2.0)
Graft weight (g)	247.5 (145-420)
Postoperative hospital stay (day)	7 (4-19)
Postoperative complications	
Wound infection (grade I)	2
Pulmonary infection (grade II)	2

The values are expressed as numbers (%) or medians (range). BMI: Body mass index; D/R: Donor/recipient.

Table 4 Postoperative complications after liver transplantation

Complications	Patient number ¹		Managements	Outcomes ²
	Stage I (n = 45)	Stage II (n = 77)		
Surgical complications				
HAT	4	2	DSA (3 pts); thrombectomy and reconstruction (6 pts)	3 pts died
PVT	5	5	Reoperation (5 pts); metal stent placement (1 pt)	7 pts died
Biliary leakage	3	2	Drainage or reoperation	3 pts died
Biliary stricture	2	1	PTCD (1 pt)	2 pts died
Biliary sludge	1	0	Retransplantation	Alive
Wound dehiscence	3	1	Debridement and re-closure	2 pts died
Digestive tract perforation	2	2	Reoperation	4 pts died
Intra-abdominal bleeding	0	1	Reoperation	Alive
Wound infection	1	0	Regular wound dressing	1 pt died
Small-for-size syndrome	0	1	-	1 pt died
Large-for-size syndrome	0	1	-	1 pt died
Non-surgical complications				

Pulmonary infection	14	16	Antibiotics (30 pts); 11 pts mechanical ventilation (5 died pts)
CMV infection	17	13	Antivirus therapy 7 pts died
EBV infection	3	10	Antivirus therapy 1 pt died
De novo HBV infection	7	6	Antivirus therapy 2 pts died
Drug-induced liver injury	0	1	Withdrawal of the drug 1 pt died
Tuberculous pleurisy	1	0	Anti-tuberculosis Alive
Acute rejection	15	13	Increased the dosage of the immunosuppressant; bolus doses of steroids 5 pts died
PTLD	0	1	- 1 pt died
Hirsutism	7	0	Replacement of cyclosporine with tacrolimus 1 pt died
Intravascular hemolysis	1	1	Steroid therapy; withdrawal of blood transfusion 1 pt died

¹Multiple complications might occur in a single patient; ²Patients who experienced the complication but died from other reasons before the last follow-up contact were also included. CMV: Cytomegalovirus; DSA: Digital subtraction angiography; EBV: Epstein-Barr virus; HAT: Hepatic artery thrombosis; HBV: Hepatitis B virus; pt: Patient; PTCD: Percutaneous transhepatic cholangial drainage; PTLN: Posttransplant lymphoproliferative disease; pts: Patients; PVT: Portal venous thrombosis.