

# World Journal of *Diabetes*

*World J Diabetes* 2024 October 15; 15(10): 2002-2156



## EDITORIAL

- 2002** Potential mechanism of teneligliptin in the treatment of diabetic cardiomyopathy  
*Guo J, Cao Y, Wu QY, Cen LS*
- 2006** Utilising continuous glucose monitoring for glycemic control in diabetic kidney disease  
*Veeranki V, Prasad N*
- 2010** Potential prospects of Chinese medicine application in diabetic retinopathy  
*Zhou YM, Cao YH, Guo J, Cen LS*
- 2015** Don't give up on mitochondria as a target for the treatment of diabetes and its complications  
*Cortés-Rojo C, Vargas-Vargas MA*
- 2022** Immunotherapy in type 1 diabetes: Novel pathway to the future ahead  
*Ray S, Palui R*
- 2036** Surgical or medical treatment of obesity-associated type 2 diabetes-an increasing clinical conundrum  
*Jalleh RJ, Jones KL, Islam MS, Cai L, Horowitz M*

## REVIEW

- 2041** Role of cyclic guanosine monophosphate-adenosine monophosphate synthase-stimulator of interferon genes pathway in diabetes and its complications  
*Fan MW, Tian JL, Chen T, Zhang C, Liu XR, Zhao ZJ, Zhang SH, Chen Y*

## ORIGINAL ARTICLE

## Retrospective Study

- 2058** Relationship between hemoglobin glycation index and risk of hypoglycemia in type 2 diabetes with time-in-range in target  
*Lin BS, Liu ZG, Chen DR, Yang YL, Yang DZ, Yan JH, Zeng LY, Yang XB, Xu W*
- 2070** Delayed treatment of diabetic foot ulcer in patients with type 2 diabetes and its prediction model  
*Chen H, Xi Y*

## Observational Study

- 2081** Association between sensitivity to thyroid hormones and non-high-density lipoprotein cholesterol levels in patients with type 2 diabetes mellitus  
*Duan XY, Fu JL, Sun LN, Mu ZJ, Xiu SL*

**Clinical and Translational Research**

- 2093** Identification of immune feature genes and intercellular profiles in diabetic cardiomyopathy  
*Zheng ZQ, Cai DH, Song YF*

**Basic Study**

- 2111** Asiaticoside improves diabetic nephropathy by reducing inflammation, oxidative stress, and fibrosis: An *in vitro* and *in vivo* study  
*Zhuang LG, Zhang R, Jin GX, Pei XY, Wang Q, Ge XX*
- 2123** Effect of cuproptosis on acute kidney injury after cardiopulmonary bypass in diabetic patients  
*Deng XJ, Wang YN, Lv CB, Qiu ZZ, Zhu LX, Shi JH, Sana SRGL*

**SYSTEMATIC REVIEWS**

- 2135** Combining GLP-1 receptor agonists and SGLT-2 inhibitors for cardiovascular disease prevention in type 2 diabetes: A systematic review with multiple network meta-regressions  
*Zhu JJ, Wilding JPH, Gu XS*

**LETTER TO THE EDITOR**

- 2147** Interleukin-35: A key player managing pre-diabetes and chronic inflammatory type 1 autoimmune diabetes  
*Chakraborty R, Mukherjee AK, Bala A*
- 2152** Gut microbiota modulating therapy for diabetes mellitus should be individualized  
*Wang J, Wei HJ, Mao RF, Chang X*

ABOUT COVER

Peer Review of *World Journal of Diabetes*, Tao-Hsin Tung, PhD, Researcher, Director, Epidemiologist, Evidence-based Medicine Center, Taizhou Hospital of Zhejiang Province Affiliated to Wenzhou Medical University, Taizhou 317000, Zhejiang Province, China. dongdx@enzemed.com .

AIMS AND SCOPE

The primary aim of *World Journal of Diabetes* (*WJD*, *World J Diabetes*) is to provide scholars and readers from various fields of diabetes with a platform to publish high-quality basic and clinical research articles and communicate their research findings online.

*WJD* mainly publishes articles reporting research results and findings obtained in the field of diabetes and covering a wide range of topics including risk factors for diabetes, diabetes complications, experimental diabetes mellitus, type 1 diabetes mellitus, type 2 diabetes mellitus, gestational diabetes, diabetic angiopathies, diabetic cardiomyopathies, diabetic coma, diabetic ketoacidosis, diabetic nephropathies, diabetic neuropathies, Donohue syndrome, fetal macrosomia, and prediabetic state.

INDEXING/ABSTRACTING

The *WJD* is now abstracted and indexed in Science Citation Index Expanded (SCIE, also known as SciSearch®), Current Contents/Clinical Medicine, Journal Citation Reports/Science Edition, PubMed, PubMed Central, Reference Citation Analysis, China Science and Technology Journal Database, and Superstar Journals Database. The 2024 Edition of Journal Citation Reports® cites the 2023 journal impact factor (JIF) for *WJD* as 4.2; JIF without journal self cites: 4.1; 5-year JIF: 4.2; JIF Rank: 40/186 in endocrinology and metabolism; JIF Quartile: Q1; and 5-year JIF Quartile: Q2.

RESPONSIBLE EDITORS FOR THIS ISSUE

Production Editor: *Yu-Xi Chen*; Production Department Director: *Xu Guo*; Cover Editor: *Jia-Ru Fan*.

NAME OF JOURNAL

*World Journal of Diabetes*

ISSN

ISSN 1948-9358 (online)

LAUNCH DATE

June 15, 2010

FREQUENCY

Monthly

EDITORS-IN-CHIEF

Lu Cai, Md. Shahidul Islam, Michael Horowitz

EDITORIAL BOARD MEMBERS

<https://www.wjgnet.com/1948-9358/editorialboard.htm>

PUBLICATION DATE

October 15, 2024

COPYRIGHT

© 2024 Baishideng Publishing Group Inc

INSTRUCTIONS TO AUTHORS

<https://www.wjgnet.com/bpg/gerinfo/204>

GUIDELINES FOR ETHICS DOCUMENTS

<https://www.wjgnet.com/bpg/GerInfo/287>

GUIDELINES FOR NON-NATIVE SPEAKERS OF ENGLISH

<https://www.wjgnet.com/bpg/gerinfo/240>

PUBLICATION ETHICS

<https://www.wjgnet.com/bpg/GerInfo/288>

PUBLICATION MISCONDUCT

<https://www.wjgnet.com/bpg/gerinfo/208>

ARTICLE PROCESSING CHARGE

<https://www.wjgnet.com/bpg/gerinfo/242>

STEPS FOR SUBMITTING MANUSCRIPTS

<https://www.wjgnet.com/bpg/GerInfo/239>

ONLINE SUBMISSION

<https://www.f6publishing.com>

## Retrospective Study

## Relationship between hemoglobin glycation index and risk of hypoglycemia in type 2 diabetes with time-in-range in target

Bei-Si Lin, Zhi-Gu Liu, Dan-Rui Chen, Yan-Ling Yang, Dai-Zhi Yang, Jin-Hua Yan, Long-Yi Zeng, Xu-Bin Yang, Wen Xu

**Specialty type:** Endocrinology and metabolism

**Provenance and peer review:**

Unsolicited article; Externally peer reviewed.

**Peer-review model:** Single blind

**Peer-review report's classification**

**Scientific Quality:** Grade B, Grade B, Grade C, Grade C

**Novelty:** Grade A, Grade B, Grade C

**Creativity or Innovation:** Grade B, Grade B, Grade C

**Scientific Significance:** Grade B, Grade B, Grade C

**P-Reviewer:** Cai L; Yang L; Zhao K

**Received:** June 2, 2024

**Revised:** August 13, 2024

**Accepted:** September 6, 2024

**Published online:** October 15, 2024

**Processing time:** 115 Days and 17 Hours



Bei-Si Lin, Zhi-Gu Liu, Dan-Rui Chen, Yan-Ling Yang, Dai-Zhi Yang, Jin-Hua Yan, Long-Yi Zeng, Xu-Bin Yang, Wen Xu, Department of Endocrinology and Metabolism, The Third Affiliated Hospital of Sun Yat-sen University, Guangdong Provincial Key Laboratory of Diabetology, Guangzhou 510630, Guangdong Province, China

Xu-Bin Yang, Department of Endocrinology and Metabolism, The Third Affiliated Hospital (Zhaoqing Hospital), Sun Yat-sen University, Zhaoqing 526000, Guangdong Province, China

**Co-first authors:** Bei-Si Lin and Zhi-Gu Liu.

**Co-corresponding authors:** Xu-Bin Yang and Wen Xu.

**Corresponding author:** Wen Xu, MD, PhD, Doctor, Professor, Department of Endocrinology and Metabolism, The Third Affiliated Hospital of Sun Yat-sen University, Guangdong Provincial Key Laboratory of Diabetology, No. 600 Tianhe Road, Tianhe District, Guangzhou 510630, Guangdong Province, China. [xwen@mail.sysu.edu.cn](mailto:xwen@mail.sysu.edu.cn)

## Abstract

### BACKGROUND

In patients with type 2 diabetes mellitus (T2DM), the risk of hypoglycemia also occurs in at a time-in-range (TIR) of > 70%. The hemoglobin glycation index (HGI) is considered the best single factor for predicting hypoglycemia, and offers new perspectives for the individualized treatment of patients with well-controlled blood glucose levels that are easily ignored in clinical settings.

### AIM

To investigate the relationship between HGI and hypoglycemia and the implications of HGI on hypoglycemia in T2DM with TIR > 70%.

### METHODS

All participants underwent a 7-days continuous glucose monitoring (CGM) using a retrospective CGM system. We obtained glycemic variability indices using the CGM system. We defined HGI as laboratory hemoglobin A1c minus the glucose management indicator. Patients were categorized into low HGI (HGI < 0.5) and high HGI groups (HGI ≥ 0.5) according to HGI median (0.5). Logistic regression and receiver operating characteristic curve analyses were used to determine the risk factors for hypoglycemia.

## RESULTS

We included 129 subjects with T2DM ( $54.84 \pm 12.56$  years, 46% male) in the study. Median TIR score was 90%. The high HGI group exhibited lower TIR and greater time below range with higher hemoglobin A1c than the low HGI group; this suggests more glycemic excursions and an increased incidence of hypoglycemia in the high HGI group. Multivariate analyses revealed that mean blood glucose, standard deviation of blood glucose and HGI were independent risk factors for hypoglycemia. Receiver operating characteristic curve analysis indicated that the HGI was the best predictor of hypoglycemia. In addition, the optimal cut-off points for HGI, mean blood glucose, and standard deviation of blood glucose in predicting hypoglycemia were 0.5%, 7.2 mmol/L and 1.4 mmol/L respectively.

## CONCLUSION

High HGI was significantly associated with greater glycemic excursions and increased hypoglycemia in patients with TIR > 70%. Our findings indicate that HGI is a reliable predictor of hypoglycemia in this population.

**Key Words:** Hemoglobin glycation index; Hypoglycemia; Type 2 diabetes mellitus; Continuous glucose monitoring; Time in range

©The Author(s) 2024. Published by Baishideng Publishing Group Inc. All rights reserved.

**Core Tip:** Our study focused on the relationship between hemoglobin glycation index and hypoglycemia in patients with type 2 diabetes and time-in-range > 70%. Our findings suggest that a high hemoglobin glycation index was significantly associated with greater glycemic excursions and increased hypoglycemia and was the best predictor of the occurrence and severity of hypoglycemia in this population.

**Citation:** Lin BS, Liu ZG, Chen DR, Yang YL, Yang DZ, Yan JH, Zeng LY, Yang XB, Xu W. Relationship between hemoglobin glycation index and risk of hypoglycemia in type 2 diabetes with time-in-range in target. *World J Diabetes* 2024; 15(10): 2058-2069

**URL:** <https://www.wjgnet.com/1948-9358/full/v15/i10/2058.htm>

**DOI:** <https://dx.doi.org/10.4239/wjd.v15.i10.2058>

## INTRODUCTION

Hemoglobin A1C is widely recognized as the gold standard for evaluating glycemic control and is significantly associated with chronic complications of diabetes mellitus[1]. While hemoglobin A1C can provide an average blood glucose level over the past three months, it fails to accurately evaluate fluctuations in blood glucose levels and hypoglycemia episodes[2,3]. Patients with similar hemoglobin A1C values may experience variations in glucose fluctuations[4]. Therefore, different patients with similar hemoglobin A1C experience different complications. Therefore, a novel index is required to facilitate precise glucose management. With the increasing use of continuous glucose monitoring (CGM) system in recent years, several glucose control parameters other than hemoglobin A1C have been proposed[5]. Among these parameters, time in range (TIR) and glucose management indicator (GMI) are proven novel measures for evaluating glycemic control[6,7].

The TIR is an important metric for evaluating glycemic control and strongly correlates with diabetic complications[8]. Therefore, TIR is more precise than hemoglobin A1C for accessing glycemic control[9]. Patients who achieve TIR within the target range experience less glycemic fluctuation and episodes of hypoglycemia[10]. However, a recent study suggested that some patients who meet TIR target range still experience significant hypoglycemia[11]. Given that patients with diabetes are at a higher risk of mortality due to hypoglycemia, identifying the potential factors contributing to hypoglycemic episodes in patients who achieve targeted TIR is essential.

The GMI can be easily obtained from CGM data; it is a crucial indicator for evaluating glucose status[8]. However, hemoglobin A1C and GMI do not always align[12]. There is a significant disparity between GMI and actual hemoglobin A1C values in some patients, which inhibits the effective utilization of GMI in clinical practice[12]. Therefore, further investigation of this discrepancy between GMI and laboratory hemoglobin A1C levels is important so that clinicians can help their patients effectively manage glycemic control and establish personalized glycemic targets.

To illustrate the discordance between the predicted hemoglobin A1C and laboratory hemoglobin A1C, the hemoglobin glycation index (HGI), calculated as the measured hemoglobin A1C minus GMI, was derived[4]. High HGI value was associated with increased incidence of diabetes-related complications and comorbidities[13,14]. In addition, a high HGI has been proved to attribute to the occurrence of hypoglycemia in patients with poor glucose control[15]. Hence, glycemic hypoglycemia is considered a bridge between high HGI and diabetes-associated complications. However, previous studies investigating the relationship between HGI and hypoglycemia mainly focused on populations whose blood glucose level was beyond the target but not on those with well glycemic control. Patients with good glycemic control may still experience diabetic complications; notable, this population exhibited more episodes of hypoglycemia. Nevertheless, the potential association between HGI and hypoglycemia in this particular population remains elusive. Therefore, invest-



igating the relationship between the HGI and hypoglycemia in patients with TIR > 70% may help clinicians establish effective glycemic control and reduce the incidence of diabetes-associated complications in this population. Therefore, in this study, we explored the role of HGI in assessing glycemic status in patients with type 2 diabetes and a TIR > 70%.

## MATERIALS AND METHODS

### Study design and population

This single-center retrospective study was conducted at the Department of Endocrinology and Metabolic Diseases, Third Affiliated Hospital of Sun Yat-sen University, Guangzhou, Guangdong Province, China, between June 2017 and December 2019 (Figure 1). The inclusion criteria were as follows: (1) Met the 1999 World Health Organization diagnostic criteria for type 2 diabetes mellitus (T2DM) and age > 18 years; (2) Antihyperglycemic treatment was stable for at least 3 months prior to admission; (3) Laboratory-measured hemoglobin A1c levels were measured and a 7-days CGM was simultaneously applied on the same day simultaneously; and (4) Patients without conditions that may interfere with hemoglobin A1C measurement, such as anemia, hemoglobinopathies, severe renal failure (estimated glomerular filtration rate < 30 mL/minutes/1.73 m<sup>2</sup>), and pregnancy. The exclusion criteria included allergies to the CGM sensors and poor compliance with the use of CGM.

### Anthropometric indices and laboratory examination

Body mass index was calculated using standard methods [body mass index = weight (kg)/ height<sup>2</sup> (m<sup>2</sup>)]. Systolic blood pressure and diastolic blood pressure were measured thrice and averaged. Blood tests were performed after an overnight fast. Laboratory hemoglobin A1C levels were determined using high-performance liquid chromatography with an automated analyzer (Bio-Rad D10; Bio-Rad Laboratories, Hercules, CA, United States) with the whole blood samples. The reference range for laboratory hemoglobin A1C was 4.3%-6.1%, with intra- and inter-batch coefficients of variation of 0.46% and 0.99%, respectively. Hemoglobin, hematocrit, and red blood cell distribution widths in whole blood samples were measured using a fully automated analyzer (Maccura Biotechnology, Chengdu, China). Serum was obtained after centrifugation of whole blood at 3000 rpm for 10 minutes and subsequently analyzed for total cholesterol, triglycerides, high-density lipoprotein cholesterol, and low-density lipoprotein cholesterol using a Hitachi Model 7600 Series Automatic Analyzer.

### CGM

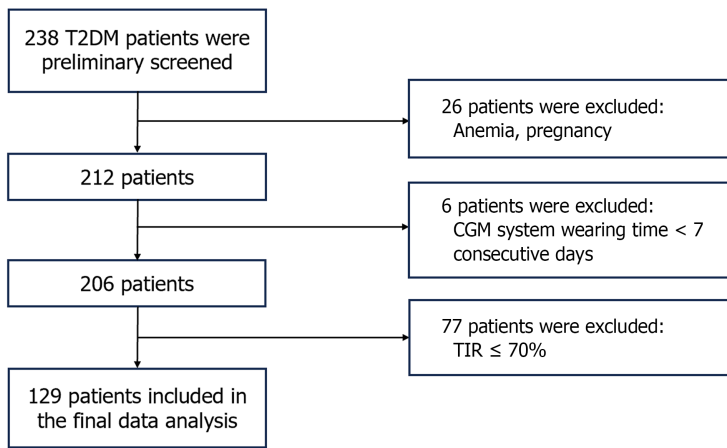
All subjects underwent a 7-days CGM with a professional retrospective CGM system (iPro™2, Medtronic Minimed Inc., Northridge, CA, United States) following their admission. At least four times of capillary blood glucose monitoring per day were conducted during the CGM period, and capillary blood glucose values were entered into the CGM system monitor for calibration purposes. The CGM data were subsequently downloaded using Carelink iPro and analyzed using GlyCulator 2.0. Only the data sets with adequate glucose data (≥ 70% per day) were included. Data collected on the days of sensor insertion and detachment were considered unstable calibration data and were excluded[16]. Invalid data with evidence of CGM malfunction or sensor loss were excluded from further analysis. Glycemic variability indices adopted in this study included[8]: (1) Mean blood glucose (MBG) is the average BG concentration based on CGM data; (2) Standard deviation of blood glucose (SDBG) is the standard deviation of the total blood glucose within 7 days; (3) Coefficient of variability of glycemia (%CV: SDBG/MBG × 100); (4) The mean amplitude of glycemic excursions (MAGE): The arithmetic mean of the differences between consecutive peaks and nadirs with measurement in the peak-to-nadir direction by the first qualifying excursion; and (5) Absolute means of daily differences (MODD): The mean of absolute differences between glucose values at the same time on two consecutive days. TIR (3.9-10.0 mmol/L), time below range (TBR < 3.9 mmol/L) and time above range (TAR > 10.0 mmol/L) were also obtained from the CGM system. GMI was calculated by CGM-derived mean glucose using the published equation [GMI (%) = 3.31 + 0.02392 × mean glucose in mg/dL][17]. HGI was defined as laboratory hemoglobin A1C minus GMI, and the subjects were divided into two subgroups according to the median HGI (median: 0.5). Patients with HGI < 0.5 were designated as low HGI subgroup while those with HGI ≥ 0.5 were classified as high HGI subgroup.

### Definition of hypoglycemia

In accordance with international consensus guidelines, a level 1 hypoglycemic episode was defined as ≥ 15 consecutive minutes of sensor glucose < 3.9 mmol/L, a level 2 hypoglycemic period was defined as sensor glucose < 3.0 mmol/L for ≥ 15 consecutive minutes, both ending at the start of the first 15-minutes period with a sensor glucose ≥ 3.9 mmol/L or 3.0 mmol/L[18,19]. Nocturnal hypoglycemia was defined as hypoglycemia occurring between 10 pm and 6 am[20]. Nocturnal hypoglycemia was further divided into two periods: Hypoglycemia at night (10 pm to 3 am) and early morning (3 am to 6 am).

### Statistical analysis

All data analyses were performed using the SPSS software version 26.0 (SPSS IBM Inc., Chicago, IL, United States). Data are represented as mean ± SD for normally distributed variables and as median with interquartile range for non-normally distributed data variables. Continuous variables were compared with analysis using the Student's *t*-test or Mann-Whitney testing, and categorical variables were compared using the  $\chi^2$  test or Fisher's exact probabilities. Multiple logistic regression was used to calculate odds ratios (ORs) and 95% confidence intervals (CI) to evaluate the risk factors for



**Figure 1** Flow chart of the trial. T2DM: Type 2 diabetes mellitus; CGM: Continuous glucose monitoring; TIR: Time in range.

hypoglycemia. Multivariate logistic regression analysis was used with a forward selection method, and only factors that showed  $P$  values of  $< 0.25$  on univariate analysis were chosen in the multivariate model after excluding multicollinearity by Spearman's correlation analysis. The validity of CGM-derived metrics for hypoglycemia diagnosis was estimated using receiver operating characteristic (ROC) curves, optimal cutoff values, area under the curve, sensitivity, and specificity with 95%CI. Statistical significance was set at  $P < 0.05$ .

## RESULTS

### Clinical characteristics and CGM parameters of subjects

A total of 129 patients with an average age of  $54.84 \pm 12.56$  years and 54 males (41.9%) were enrolled into our study. There were no significant differences in the treatment between the high and low HGI groups, and the proportion of patients receiving sulfonylurea and insulin therapy, who might be potentially more prone to hypoglycemia, was relatively small. Although the rate of insulin use was higher in the high-HGI group than that in the low-HGI group, the difference was not statistically significant (35% *vs* 21%,  $P = 0.071$ ). Additionally, the high-HGI group exhibited decreased hematocrit levels, whereas no variations in red cell distribution width were observed between the two groups. The mean laboratory hemoglobin A1C level in all subjects was  $6.63\% \pm 1.27\%$ . Moreover, laboratory hemoglobin A1C was significantly higher in the high HGI group than that in the low HGI group ( $7.43\% \pm 1.30\%$  *vs*  $5.95\% \pm 0.71\%$ ,  $P < 0.001$ ) (Table 1).

There were no significant differences in GMI values between high and low HGI groups ( $6.11\% \pm 0.70\%$  *vs*  $6.06\% \pm 0.63\%$ ,  $P = 0.752$ ). Glycemic variability indices, including CV ( $21.41\% \pm 6.78\%$  *vs*  $24.76\% \pm 8.31\%$ ,  $P = 0.017$ ), largest amplitude of glycemic excursions (LAGE) ( $8.26\% \pm 2.89\%$  *vs*  $9.63 \pm 3.06\%$ ,  $P = 0.005$ ) and MODD [ $1.30$  (0.50) *vs*  $1.50$  (0.60),  $P = 0.024$ ] were significantly higher in high HGI group than those in low HGI group, while no significant differences of SDBG, MBG and MAGE were observed between groups. The TIR was significantly lower in the high HGI group than in the low HGI group. An absolute difference in TBR was also observed between the two groups, whereas no statistically significant difference was observed in time above range between the groups (Table 2).

### Hypoglycemia status and factors affecting hypoglycemia in type 2 diabetes

Despite higher hemoglobin A1C levels, the high HGI group exhibited a significantly higher incidence of hypoglycemia than the low HGI group (67% *vs* 14%,  $P < 0.001$ ) (Table 1). The time, frequency, and severity of hypoglycemia were further compared between the high- and low-HGI groups. The frequencies of hypoglycemia in the early morning (from 3 am to 6 am) and at night (from 10 pm to 3 am) were significantly lower in the low-HGI group than in the high-HGI group (3.78% *vs* 10.14%,  $P < 0.0001$  and 3.67% *vs* 10.96%,  $P < 0.0001$ , respectively). We next evaluated the duration of the glucose for level 1 hypoglycemia (below 3.9 mmol/L) or level 2 hypoglycemia (below 3.0 mmol/L) and found that the percentage of time for either was significantly higher in the high HGI group than those in the low HGI group (Figure 2). Logistic regression analyses revealed that low MBG, high SDBG, and high HGI were independent risk factors for the presence of hypoglycemia, whereas sex, age, laboratory hemoglobin A1c, hematocrit, LAGE, MAGE, MODD, and use of insulin and/or sulfonylurea treatment did not show a relationship with hypoglycemia in type 2 diabetes patients with TIR  $> 70\%$  (Table 3).

### Predicting factors for hypoglycemia

ROC curve analysis was conducted to evaluate the effects of HGI, MBG, and SDBG on hypoglycemia. The area under the ROC curve for HGI (0.79, 95%CI: 0.71-0.87,  $P < 0.0001$ ) was superior to that for MBG (0.67, 95%CI: 0.58-0.75,  $P = 0.0003$ ) and SDBG (0.67, 95%CI: 0.58-0.75,  $P = 0.0004$ ) in predicting hypoglycemia in type 2 diabetes patients with TIR  $> 70\%$ . ROC curve analysis showed that the optimal cutoff values of HGI, MBG, and SDBG for predicting hypoglycemia were 0.5%, 7.2 mmol/L and 1.4 mmol/L respectively (Figure 3A). We next conducted ROC curve analysis by combining the three



**Table 1 Clinical characteristics of study participants**

Characteristic	Total	HGI < 0.5	HGI ≥ 0.5	P value
Participants, <i>n</i> (%)	129	72 (56)	57 (44)	
Age (years), mean ± SD	54.84 ± 12.56	53.33 ± 12.28	56.75 ± 12.75	0.414
Female	70 (54)	35 (49)	35 (61)	0.148
BMI (kg/m <sup>2</sup> )	24.52 ± 3.11	24.33 ± 12.14	24.76 ± 6.62	0.392
Duration of diabetes (months), medians (IQR)	73 (109.5)	73 (85.17)	97.33 (127.77)	0.287
Diabetes therapy, <i>n</i> (%)				
Diet only	25 (19)	18 (25)	7 (12)	0.077
Sulfonylurea	21 (16)	11 (15)	10 (18)	0.812
Metformin	58 (45)	27 (38)	31 (54)	0.075
α-glucosidase inhibitor	33 (26)	18 (25)	15 (26)	0.865
DPP4 inhibitor	28 (22)	18 (25)	10 (18)	0.391
SGLT-2 inhibitor	5 (4)	3 (4)	2 (4)	0.848
CSII/MDI	35 (27)	15 (21)	20 (35)	0.071
SBP (mmHg), mean ± SD	127.35 ± 14.09	126.22 ± 13.51	128.77 ± 14.79	0.375
DBP (mmHg), mean ± SD	80.84 ± 9.19	79.79 ± 8.06	82.18 ± 10.37	0.104
TC (mmol/L), mean ± SD	4.39 ± 1.07	4.33 ± 1.02	4.46 ± 1.13	0.790
TG (mmol/L), mean ± SD	1.63 ± 1.26	1.63 ± 1.48	1.64 ± 0.93	0.285
LDL-C (mmol/L), mean ± SD	2.68 ± 0.89	2.60 ± 0.86	2.78 ± 0.92	0.275
HDL-C (mmol/L), mean ± SD	1.13 ± 0.48	1.19 ± 0.58	1.07 ± 0.30	0.216
Laboratory HbA1c (%), mean ± SD	6.63 ± 1.27	5.95 ± 0.71	7.43 ± 1.30	< 0.001 <sup>a</sup>
Hemoglobin (g/L), mean ± SD	133.84 ± 14.68	136.33 ± 13.21	131.70 ± 15.92	0.085
Hematocrit (%), mean ± SD	0.40 ± 0.04	0.41 ± 0.04	0.39 ± 0.05	0.042 <sup>a</sup>
Red cell distribution width (%), mean ± SD	0.13 ± 0.01	0.13 ± 0.01	0.13 ± 0.01	0.556
Hypoglycemia, <i>n</i> (%)	49	10 (14)	39 (67)	< 0.001 <sup>a</sup>

<sup>a</sup>*P* < 0.05, compared with the values from two groups.

HGI: Hemoglobin glycation index; BMI: Body mass index; DPP4: Dipeptidyl peptidase-4; SGLT-2: Sodium-glucose co-transporter type 2; CSII: Continuous subcutaneous insulin infusion; MDI: Multiple daily injection; SBP: Systolic blood pressure; DBP: Diastolic blood pressure; TC: Total cholesterol; TG: Triglyceride; LDL-C: Low density lipoprotein cholesterol; HDL-C: High density lipoprotein cholesterol; HbA1c: Hemoglobin A1c; IQR: Interquartile range.

indicators, which suggested the area under the ROC curve for combination of high HGI, low MBG and high SDBG (0.91, 95%CI: 0.84-0.95, *P* < 0.0001) was higher than that for combination of high HGI and low MBG (0.83, 95%CI: 0.75-0.89, *P* < 0.0001) and combination of high HGI and high SDBG (0.82, 95%CI: 0.74-0.88, *P* < 0.0001) (Figure 3B). Based on these cutoff values, patients were divided into four groups according to the number of hypoglycemia predictors, in order to analyze the differences in the severity and occurrence time of hypoglycemia: Group 0 (no risk factors) (HGI < 0.5% and MBG ≥ 7.2 mmol/L and SDBG < 1.4 mmol/L); group 1 (one risk factor) (HGI ≥ 0.5% or MBG < 7.2 mmol/L or SDBG ≥ 1.4 mmol/L); group 2 (two risk factors) (HGI ≥ 0.5% and MBG < 7.2 mmol/L or HGI ≥ 0.5% and SDBG ≥ 1.4 mmol/L or MBG < 7.2 mmol/L and SDBG ≥ 1.4 mmol/L); group 3(three risk factors) (HGI ≥ 0.5% and MBG < 7.2 mmol/L and SDBG ≥ 1.4 mmol/L). The incidence of glucose < 3.9 mmol/L and < 3.0 mmol/L was near 0% for the group with none of the three predictors, 24.1% and 7.4% respectively for the groups with a single predictor, 85.1% and 25.5% respectively for the groups with two predictors, 100% and 73.3% respectively for the groups with three predictors, suggesting a linear relationship across the groups. It is noteworthy that when patients meet the criteria of HGI ≥ 0.5% and MBG < 7.2 mmol/L and SDBG ≥ 1.4 mmol/L, the incidence of glucose < 3.9 mmol/L was 100%, while the incidence of hypoglycemia (glucose < 3.0 mmol/L) is 0% when there were no risk factors. In addition, the incidence of hypoglycemia in the early morning and at night also showed a significant increase as the number of predictors increased. The frequency of hypoglycemia in the early morning and at night was 7.7% and 0%, respectively, in cases with 0 risk factors; 24.1% and 18.5%, respectively, in cases with 1 risk factor; 51.1% and 57.4%, respectively, in cases with 2 risk factors; and 80% and 93.3%, respectively, in cases with 3 risk factors (Figure 4).

**Table 2 Continuous glucose monitoring parameters**

Characteristic	Total	HGI < 0.5	HGI ≥ 0.5	P value
Participants, <i>n</i> (%)	129	72 (56)	57 (44)	
GMI (%), mean ± SD	6.09 ± 0.67	6.11 ± 0.70	6.06 ± 0.63	0.752
Average glucose (mmol/L), mean ± SD	7.11 ± 1.06	7.13 ± 1.10	7.08 ± 1.02	0.885
SDBG (mmol/L), mean ± SD	1.67 ± 0.64	1.59 ± 0.63	1.77 ± 0.64	0.961
CV (%), mean ± SD	22.89 ± 7.65	21.41 ± 6.78	24.76 ± 8.31	0.017 <sup>a</sup>
MAGE (mmol/L), mean ± SD	4.08 ± 1.81	3.88 ± 1.72	4.35 ± 1.91	0.742
LAGE (mmol/L), mean ± SD	8.86 ± 3.03	8.26 ± 2.89	9.63 ± 3.06	0.005 <sup>a</sup>
MODD (mmol/L), medians (IQR)	1.40 (0.70)	1.30 (0.50)	1.50 (0.60)	0.024 <sup>a</sup>
TIR (% of time 3.9-10 mmol/L), medians (IQR)	90 (17)	93.50 (13)	86 (16)	0.002 <sup>a</sup>
TBR (% of time < 3.9 mmol/L), medians (IQR)	1 (5)	0 (2)	2 (11)	< 0.001 <sup>a</sup>
TAR (% of time > 10 mmol/L), medians (IQR)	6 (13)	4.50 (11)	8 (12)	0.068

<sup>a</sup>*P* < 0.05, compared with the values from two groups.

HGI: Hemoglobin glycation index; GMI: Glucose management indicator; SDBG: Standard deviation blood glucose; CV: Coefficient of variation; MAGE: Mean amplitude of glucose excursion; LAGE: Largest amplitude of glycemic excursions; MODD: Mean of daily differences; TIR: Time in range; TBR: Time below range; TAR: Time above range.

**Table 3 Clinical markers of glycemia variables for hypoglycemia analyzed by univariate and multiple logistic regression analyses**

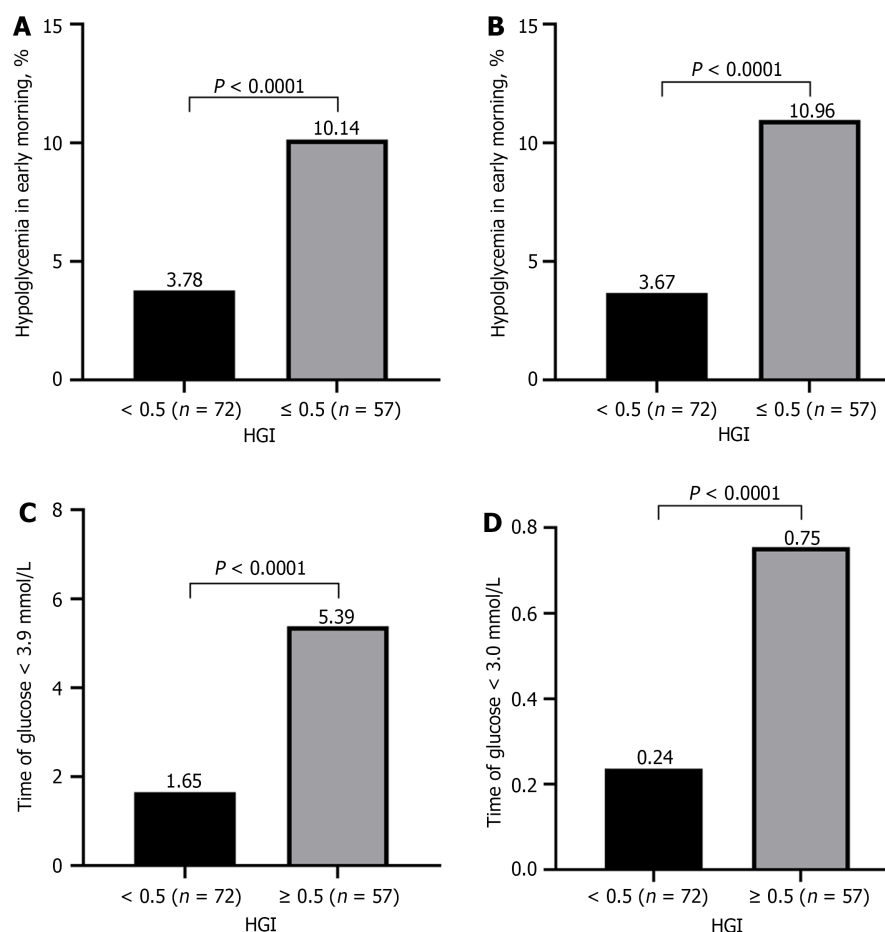
	Univariate logistic regression			Multiple logistic regression		
	$\chi^2$	P value	OR (95%CI)	Wald $\chi^2$	P value	OR (95%CI)
Sex (female/ male)	0.82	0.37	0.73 (0.36-1.45)			
Age	4.25	0.04 <sup>a</sup>	0.42 (0.19-0.96)			
BMI	0.09	0.77	1.11 (0.55-2.25)			
Laboratory HbA1c	0.36	0.55	0.81 (0.41-1.62)			
Hematocrit	1.81	0.18	1.75 (0.78-3.95)			
MBG	4.26	0.04 <sup>a</sup>	0.45 (0.21-0.96)	9.05	< 0.01 <sup>a</sup>	0.17 (0.05-0.54)
SDBG	9.74	< 0.01 <sup>a</sup>	3.44 (1.58-7.47)	5.30	0.02 <sup>a</sup>	5.37 (1.28-22.46)
LAGE	3.41	0.07	7.56 (0.88-64.67)			
MAGE	6.95	0.01 <sup>a</sup>	2.62 (1.28-5.35)			
MODD	0.32	0.57	1.36 (0.46-4.01)			
HGI	6.98	< 0.01 <sup>a</sup>	2.65 (1.29-5.44)	4.65	0.03 <sup>a</sup>	2.46 (1.09-5.58)
Use of insulin and/or sulfonylurea	0.30	0.58	1.22 (0.60-2.51)			

<sup>a</sup>*P* < 0.05.

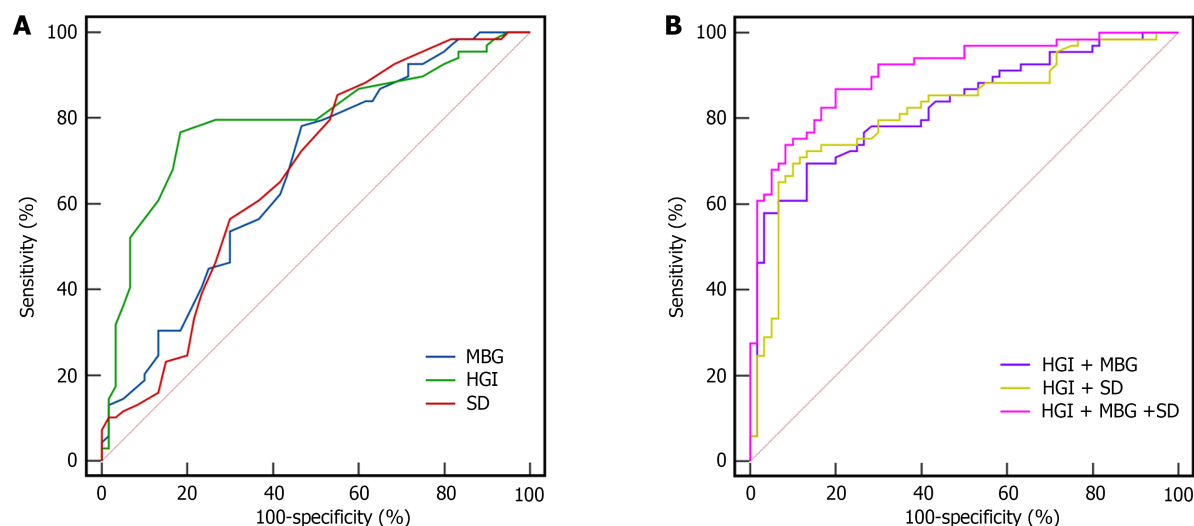
OR: Odds ratio; CI: Confidence interval; BMI: Body mass index; HbA1c: Hemoglobin A1c; MBG: Mean blood glucose; SDBG: Standard deviation blood glucose; LAGE: Largest amplitude of glycemic excursions; MAGE: Mean amplitude of glucose excursion; MODD: Mean of daily differences; HGI: Hemoglobin glycation index.

## DISCUSSION

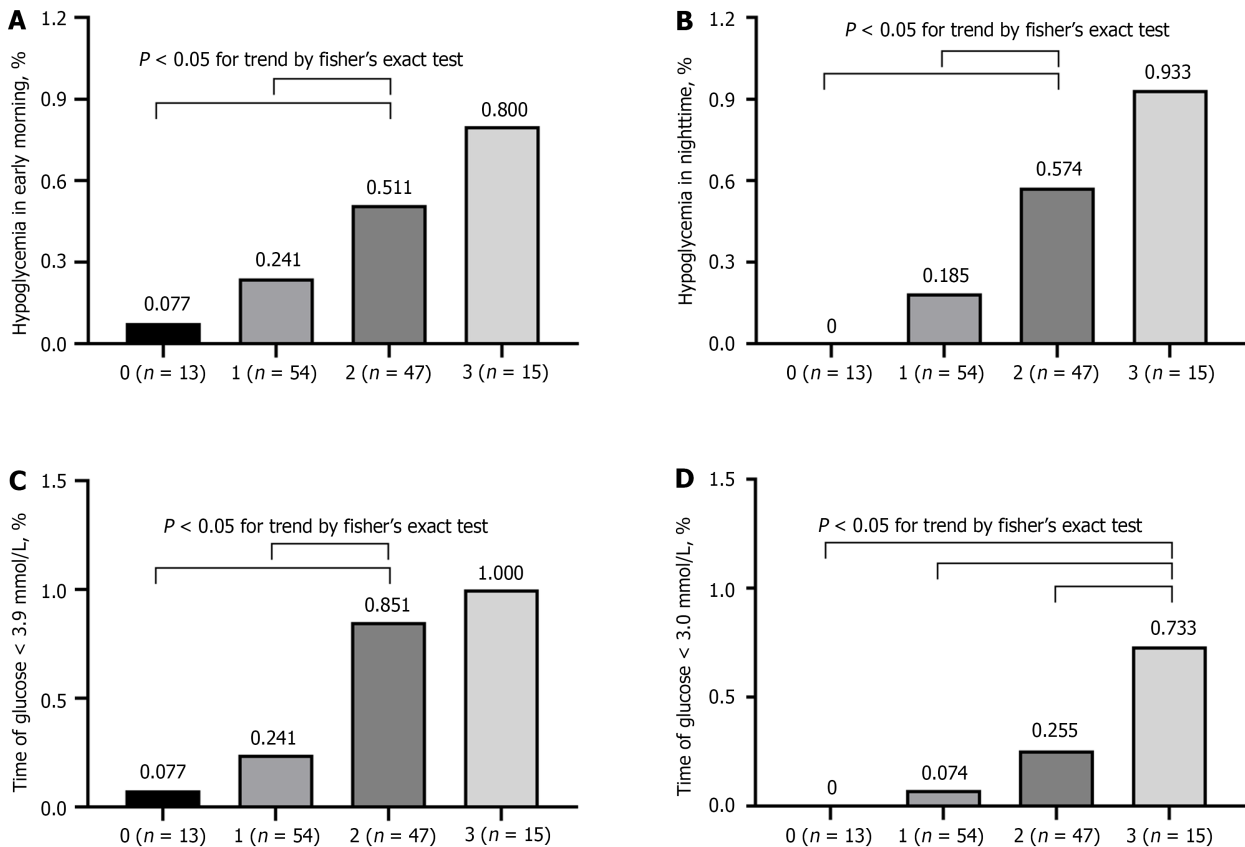
In this observational study, we investigated the relationship between HGI and hypoglycemia in patients with type 2 diabetes and TIR > 70%. Our findings indicate that the high HGI group demonstrated more hypoglycemia episodes and more instances of glucose fluctuations than the low HGI group, even in patients with type 2 diabetes with a TIR > 70%. Our study also found that the best single predictor of hypoglycemia was HGI, and hypoglycemia should be of note when



**Figure 2** The differences in hypoglycemia between high hemoglobin glycation index and low hemoglobin glycation index groups. A and B: Frequency of hypoglycemia in early morning (A) and nighttime (B); C and D: Frequency of time of glucose < 3.9 mmol/L (C) and < 3.0 mmol/L (D). HGI: Hemoglobin glycation index.



**Figure 3** Receiver operator characteristic curve. A: Receiver operator characteristic curve of high hemoglobin glycation index, low mean blood glucose and high standard deviation blood glucose in assessing risk of hypoglycemia among people with type 2 diabetes mellitus; B: Receiver operator characteristic curve of combination of high hemoglobin glycation index, low mean blood glucose and high standard deviation blood glucose in assessing risk of hypoglycemia among people with type 2 diabetes mellitus. HGI: Hemoglobin glycation index; MBG: Mean blood glucose; SD: Standard deviation.



**Figure 4 Relationship between the number of risk factors and hypoglycemia.** A and B: Frequency of hypoglycemia in early morning (A) and nighttime (B); C and D: Frequency of time of glucose < 3.9 mmol/L (C) and < 3.0 mmol/L (D). Number of risk factors for hypoglycemia: 0 [hemoglobin glycation index (HGI) < 0.5% and mean blood glucose (MBG)  $\geq$  7.2 mmol/L and standard deviation blood glucose (SDBG) < 1.4 mmol/L]; 1 (HGI  $\geq$  0.5% or MBG < 7.2 mmol/L or SDBG  $\geq$  1.4 mmol/L); 2 (HGI  $\geq$  0.5% and MBG < 7.2 mmol/L or HGI  $\geq$  0.5% and SDBG  $\geq$  1.4 mmol/L or MBG < 7.2 mmol/L and SDBG  $\geq$  1.4 mmol/L); 3 (HGI  $\geq$  0.5% and MBG < 7.2 mmol/L and SDBG  $\geq$  1.4 mmol/L).

the laboratory hemoglobin A1C was greater than GMI by  $\geq$  0.5% in this population. Moreover, hypoglycemia was more likely to occur in patients with higher HGI (HGI  $\geq$  0.5%), lower MBG level (MBG < 7.2 mmol/L) and larger fluctuations in BG level (SDBG  $\geq$  1.4 mmol/L), suggesting that the combined assessment of these three variables was useful in detecting hypoglycemia in this population.

Recently, the HGI has emerged as a novel parameter to demonstrate the discordance between predicted hemoglobin A1C and laboratory hemoglobin A1C. Patients with high HGI experience higher incidence of diabetes-associated complications. Patients in the Diabetes Control and Complications Trial study were stratified into low-, moderate-, and high-HGI groups. After seven years of follow-up, patients in the high-HGI group had a significantly higher risk of developing retinopathy and nephropathy than those in the other groups[21]. Ahn *et al*[22] investigated the relationship between the HGI and cardiovascular diseases in patients with prediabetes and individuals with treatment-naïve diabetes and found that patients in the highest HGI tertile had a significantly increased risk of composite cardiovascular diseases. However, the Action in Diabetes and Vascular Disease: Preterax and Diamicon Modified Release Controlled Evaluation (ADVANCE) trial suggested that the HGI may serve as a predictor of macrovascular and microvascular diseases, but not better than hemoglobin A1C, in patients with diabetes receiving intensive treatment[14]. Another ancillary study to Action to Control Cardiovascular Risk in Diabetes trial was conducted to investigate whether intensive hypoglycemic therapy (hemoglobin A1C goal < 6.0%) can reduce cardiovascular events in T2DM with high cardiovascular risk compared with standard treatment (hemoglobin A1C goal 7.0%-7.9%). However, the study was terminated after 3.7 years due to an increase in all-cause mortality among patients in the intensive treatment group. Interestingly, *post-hoc* subgroup analysis revealed that higher mortality in intensively treated patients with T2DM was observed only in the high HGI subgroup[23]. Patients who received intensive treatment in the ADVANCE and Action to Control Cardiovascular Risk in Diabetes trials experienced increased hypoglycemia. As a result, the discrepancy in the association between high HGI and diabetic complications in previous studies might be partly attributed to increased hypoglycemia during intensive treatment. However, research on the HGI has mainly focused on the relationship between the HGI and chronic complications and comorbidities in diabetes, whereas little attention has been paid to the relationship between the HGI and hypoglycemia in well-controlled patients.

As mentioned earlier, hemoglobin A1C may not precisely reflect blood glucose levels, even in well-controlled patients, which could lead to potential errors in clinical evaluation and treatment[24-26]. For patients with a high HGI and TIR in the target region, the actual glycosylated hemoglobin levels were higher than the predicted hemoglobin A1C. Thus, intensive hypoglycemic treatment may be administered in this population if glycosylated hemoglobin levels are used as

treatment targets. In contrast, for patients with low HGI and TIR in the target who were considered to have fewer chronic complications of diabetes, relaxation of the criteria for the control target may be considered. However, patients with strict glycemic control are prone to hypoglycemia. Hypoglycemia causes cognitive impairment and myocardial ischemia, which can result in sudden death[27]. Therefore, the relationship between the HGI and hypoglycemia needs to be clarified in patients with diabetes and good glycemic control. Interestingly, our study indicated that although with higher hemoglobin A1C and TIR in target, hypoglycemia occurred more frequently in the high HGI group than in the low HGI group.

In this study, we found no statistically significant difference in GMI values between the high and low HGI groups, but the high HGI group showed a significant increase in hemoglobin A1C, which points to the likelihood of greater blood glucose fluctuations in the high HGI group. Consistent with this, our results showed that the high HGI group had higher levels of CV, LAGE, and MODD, suggesting more glucose excursions. Additionally, higher hemoglobin A1C was more likely to lead to intensified hypoglycemic treatment by clinical physicians, which may be the reason for the higher incidence of hypoglycemia in the high HGI group. Moreover, we found that the frequency of nocturnal hypoglycemia and the severity of overall hypoglycemia were much higher in the high HGI group than in the low HGI group. These results suggest that the risk of hypoglycemia also occurred in patients with type 2 diabetes with TIR in target; thus, neither hemoglobin A1C nor GMI were proper predictors of hypoglycemia in this population. Our study showed that the HGI can serve as an effective indicator to compensate for the limitations of hemoglobin A1C in assessing glycemic control.

TIR has emerged as a significant metric in clinical studies of diabetes. Several investigations have demonstrated that TIR is closely associated with the risk of complications and mortality in patients with diabetes[28,29]. Consequently, clinical guidelines have incorporated TIR as a key objective for blood glucose management, recommending a target of > 70% for most non-pregnant adult patients with diabetes[8]. In our study, the median TIR of patients was 90%, leading to the assumption that patients had good glycemic control, potentially overlooking the occurrence of hypoglycemia. However, the single use of TIR has been criticized for not being adequately sensitive to hypoglycemia[30,31], and it has been reported that 7% of diabetic individuals with TIR greater than 70% were hospitalized for hypoglycemia or diabetic ketoacidosis[11]. Consequently, it is imperative to incorporate additional indicators to enhance the clinical glycemic management of patients with a TIR exceeding 70%. Our findings support and extend those of previous studies on glycemic control in well-controlled diabetes management. We found that HGI can be used as an indicator for assessing blood glucose to improve clinical outcomes, especially in patients with diabetes whose TIR is greater than 70%, which may be easily ignored in clinical settings.

In the present study, MBG, SDBG, and HGI were identified as risk factors for hypoglycemia, and HGI was suggested as the most effective individual measurement for predicting hypoglycemia. Previous studies have demonstrated that the occurrence of hypoglycemia increases with strict glycemic control[32]. Consistently, we found that patients with TIR > 70% were more likely to develop hypoglycemia with a higher HGI. Moreover, our study suggests that the HGI is the best predictor of the occurrence and severity of hypoglycemia. We further combined the indexes of HGI, MBG and SDBG, whose cutoff values were 0.5%, 7.2 mmol/L and 1.4 mmol/L respectively, with a sensitivity of 87% and a specificity of 80%. The results showed that patients with hemoglobin A1C higher than GMI by  $\geq 0.5\%$ , MBG < 7.2 mmol/L, and SDBG  $\geq 1.4$  mmol/L had a significantly higher risk for clinically hypoglycemia, no matter in early morning or nighttime. Previous studies have shown that using hemoglobin A1C alone as the glycemic control target might lead to irrational clinical use of hypoglycemic agents and setting unreasonable and unattainable blood glucose goals for patients to maintain good glycemic control[33-36]. Therefore, combinations of the HGI and other CGM indices, such as the HGI and hemoglobin A1C, provide individualized treatment for patients.

Our study had several strengths. First, we specifically targeted patients with a TIR exceeding 70%, a demographic that is frequently neglected regarding glycemic variability and the associated risk of hypoglycemia in clinical settings. Furthermore, our results indicate that the HGI may provide significant advantages for glucose management in patients with diabetes. Importantly, the integration of the HGI, MBG, and SDBG further improved the predictive sensitivity for hypoglycemia, thereby aiding clinicians in personalized glycemic management strategies for patients with a TIR greater than 70%. Our findings may help identify patients at a potentially greater risk of hypoglycemia and guide appropriate therapeutic schedules for patients with strict glycemic control.

### Limitation

The limitations of our study include its retrospective design and the relatively small sample size. In addition, 7 days wearing time of the CGM device was considered shorter than 10-14 days in previous studies. However, minimal differences were observed between the 14- and 7-day GMI[37], suggesting that the variance around the estimation error for the CGM metrics is similar[17]. Further prospective studies with larger sample sizes and longer wearing time of iPro2 are warranted.

## CONCLUSION

In this retrospective study, we found that a higher HGI was significantly associated with increased hypoglycemia, even in patients with TIR in target. The HGI was found to be the best predictor of hypoglycemia. Patients with a TIR exceeding 70% who exhibited lower MBG, greater glycemic excursions, and higher HGI were more likely to develop hypoglycemia.



## ACKNOWLEDGEMENTS

The authors are grateful to all the doctors, nurses, technicians, and patients for their dedication to this study.

## FOOTNOTES

**Author contributions:** Yang XB and Xu W drafted and revised the manuscript and contributed to the conception and design of this article; Lin BS, Liu ZG, Chen DR, and Yang YL contributed to the case collection and database organization; Lin BS, Liu ZG, and Yang DZ were responsible for statistical analysis of the data; Lin BS, Liu ZG, Yan JH, and Zeng LY interpreted the results. All authors read and approved the final manuscript. Lin BS and Liu ZG have contributed equally to this work as co-first authors. They both played a critical role in literature reviews, data collection and analysis as well as composition writing. Yang XB and Xu W have contributed equally to this work. They both provided guidance and supervision to the design of this study. Moreover, their funding support provided a guarantee for the smooth implementation of this study. The authors are grateful to all the doctors, nurses, technicians, and patients for their dedication to this study.

**Supported by** Investigator-initiated Trial Research Funds from Eli Lilly and Co. and Amylin Pharmaceuticals, Inc., No. A1570; and Natural Science Foundation of Guangdong Province, No. 2018A030313915.

**Institutional review board statement:** The study was reviewed and approved by the ethics committee of the Third Affiliated Hospital of Sun Yat-sen University, No.[2020]02-107-01.

**Informed consent statement:** All study participants, or their legal guardian, provided informed written consent prior to study enrollment.

**Conflict-of-interest statement:** All the authors report no relevant conflicts of interest for this article.

**Data sharing statement:** The datasets generated during and/or analyzed during the current study are available from the corresponding author on reasonable request.

**Open-Access:** This article is an open-access article that was selected by an in-house editor and fully peer-reviewed by external reviewers. It is distributed in accordance with the Creative Commons Attribution NonCommercial (CC BY-NC 4.0) license, which permits others to distribute, remix, adapt, build upon this work non-commercially, and license their derivative works on different terms, provided the original work is properly cited and the use is non-commercial. See: <https://creativecommons.org/licenses/by-nc/4.0/>

**Country of origin:** China

**ORCID number:** Bei-Si Lin 0000-0001-8542-8265; Zhi-Gu Liu 0000-0002-9003-8656; Xu-Bin Yang 0000-0002-7596-5670; Wen Xu 0000-0002-9487-0482.

**S-Editor:** Wang JJ

**L-Editor:** A

**P-Editor:** Cai YX

## REFERENCES

- 1 Klein KR, Buse JB. The trials and tribulations of determining HbA(1c) targets for diabetes mellitus. *Nat Rev Endocrinol* 2020; **16**: 717-730 [PMID: 33082551 DOI: 10.1038/s41574-020-00425-6]
- 2 Cohen RM, Lindsell CJ. When the blood glucose and the HbA(1c) don't match: turning uncertainty into opportunity. *Diabetes Care* 2012; **35**: 2421-2423 [PMID: 23173128 DOI: 10.2337/dc12-1479]
- 3 Beck RW, Connor CG, Mullen DM, Wesley DM, Bergenstal RM. The Fallacy of Average: How Using HbA(1c) Alone to Assess Glycemic Control Can Be Misleading. *Diabetes Care* 2017; **40**: 994-999 [PMID: 28733374 DOI: 10.2337/dc17-0636]
- 4 Nayak AU, Singh BM, Dunmore SJ. Potential Clinical Error Arising From Use of HbA1c in Diabetes: Effects of the Glycation Gap. *Endocr Rev* 2019; **40**: 988-999 [PMID: 31074800 DOI: 10.1210/er.2018-00284]
- 5 Peek ME, Thomas CC. Broadening Access to Continuous Glucose Monitoring for Patients With Type 2 Diabetes. *JAMA* 2021; **325**: 2255-2257 [PMID: 34077505 DOI: 10.1001/jama.2021.6208]
- 6 Li J, Li Y, Ma W, Liu Y, Yin X, Xie C, Bai J, Zhang M. Association of Time in Range levels with Lower Extremity Arterial Disease in patients with type 2 diabetes. *Diabetes Metab Syndr* 2020; **14**: 2081-2085 [PMID: 33137566 DOI: 10.1016/j.dsx.2020.09.028]
- 7 Bergenstal RM, Beck RW, Close KL, Grunberger G, Sacks DB, Kowalski A, Brown AS, Heinemann L, Aleppo G, Ryan DB, Riddleworth TD, Cefalu WT. Glucose Management Indicator (GMI): A New Term for Estimating A1C From Continuous Glucose Monitoring. *Diabetes Care* 2018; **41**: 2275-2280 [PMID: 30224348 DOI: 10.2337/dc18-1581]
- 8 Battelino T, Danne T, Bergenstal RM, Amiel SA, Beck R, Biester T, Bosi E, Buckingham BA, Cefalu WT, Close KL, Cobelli C, Dassau E, DeVries JH, Donaghue KC, Dovc K, Doyle FJ 3rd, Garg S, Grunberger G, Heller S, Heinemann L, Hirsch IB, Hovorka R, Jia W, Kordonouri O, Kovatchev B, Kowalski A, Laffel L, Levine B, Mayorov A, Mathieu C, Murphy HR, Nimri R, Nørgaard K, Parkin CG, Renard E, Rodbard D, Saboo B, Schatz D, Stoner K, Urakami T, Weinzimer SA, Phillip M. Clinical Targets for Continuous Glucose Monitoring Data Interpretation: Recommendations From the International Consensus on Time in Range. *Diabetes Care* 2019; **42**: 1593-1603 [PMID: 31177185]

- DOI: [10.2337/dci19-0028](https://doi.org/10.2337/dci19-0028)]
- 9 **Yapanis M**, James S, Craig ME, O'Neal D, Ekinici EI. Complications of Diabetes and Metrics of Glycemic Management Derived From Continuous Glucose Monitoring. *J Clin Endocrinol Metab* 2022; **107**: e2221-e2236 [PMID: [35094087](https://pubmed.ncbi.nlm.nih.gov/35094087/) DOI: [10.1210/clinem/dgac034](https://doi.org/10.1210/clinem/dgac034)]
  - 10 **Kesavadev J**, Misra A, Saboo B, Agarwal S, Sosale A, Joshi SR, Hussain A, Somasundaram N, Basit A, Choudhary P, Soegondo S. Time-in-range and frequency of continuous glucose monitoring: Recommendations for South Asia. *Diabetes Metab Syndr* 2022; **16**: 102345 [PMID: [34920199](https://pubmed.ncbi.nlm.nih.gov/34920199/) DOI: [10.1016/j.dsx.2021.102345](https://doi.org/10.1016/j.dsx.2021.102345)]
  - 11 **El Malahi A**, Van Elsen M, Charleer S, Dirinck E, Ledeganck K, Keymeulen B, Crenier L, Radermecker R, Taes Y, Vercammen C, Nobels F, Mathieu C, Gillard P, De Block C. Relationship Between Time in Range, Glycemic Variability, HbA1c, and Complications in Adults With Type 1 Diabetes Mellitus. *J Clin Endocrinol Metab* 2022; **107**: e570-e581 [PMID: [34534297](https://pubmed.ncbi.nlm.nih.gov/34534297/) DOI: [10.1210/clinem/dgab688](https://doi.org/10.1210/clinem/dgab688)]
  - 12 **Oriot P**, Viry C, Vandelaer A, Grigioni S, Roy M, Philips JC, Prévost G. Discordance Between Glycated Hemoglobin A1c and the Glucose Management Indicator in People With Diabetes and Chronic Kidney Disease. *J Diabetes Sci Technol* 2023; **17**: 1553-1562 [PMID: [35466719](https://pubmed.ncbi.nlm.nih.gov/35466719/) DOI: [10.1177/19322968221092050](https://doi.org/10.1177/19322968221092050)]
  - 13 **Basu S**, Raghavan S, Wexler DJ, Berkowitz SA. Characteristics Associated With Decreased or Increased Mortality Risk From Glycemic Therapy Among Patients With Type 2 Diabetes and High Cardiovascular Risk: Machine Learning Analysis of the ACCORD Trial. *Diabetes Care* 2018; **41**: 604-612 [PMID: [29279299](https://pubmed.ncbi.nlm.nih.gov/29279299/) DOI: [10.2337/dc17-2252](https://doi.org/10.2337/dc17-2252)]
  - 14 **van Steen SC**, Woodward M, Chalmers J, Li Q, Marre M, Cooper ME, Hamet P, Mancina G, Colagiuri S, Williams B, Grobbee DE, DeVries JH; ADVANCE Collaborative Group. Haemoglobin glycation index and risk for diabetes-related complications in the Action in Diabetes and Vascular Disease: Preterax and Diamicon Modified Release Controlled Evaluation (ADVANCE) trial. *Diabetologia* 2018; **61**: 780-789 [PMID: [29308539](https://pubmed.ncbi.nlm.nih.gov/29308539/) DOI: [10.1007/s00125-017-4539-1](https://doi.org/10.1007/s00125-017-4539-1)]
  - 15 **Klein KR**, Franek E, Marso S, Pieber TR, Pratley RE, Gowda A, Kvist K, Buse JB. Hemoglobin glycation index, calculated from a single fasting glucose value, as a prediction tool for severe hypoglycemia and major adverse cardiovascular events in DEVOTE. *BMJ Open Diabetes Res Care* 2021; **9** [PMID: [34819298](https://pubmed.ncbi.nlm.nih.gov/34819298/) DOI: [10.1136/bmjdc-2021-002339](https://doi.org/10.1136/bmjdc-2021-002339)]
  - 16 **Færch K**, Amadid H, Bruhn L, Clemmensen KKB, Hulman A, Ried-Larsen M, Blond MB, Jørgensen ME, Vistisen D. Discordance Between Glucose Levels Measured in Interstitial Fluid vs in Venous Plasma After Oral Glucose Administration: A Post-Hoc Analysis From the Randomised Controlled PRE-D Trial. *Front Endocrinol (Lausanne)* 2021; **12**: 753810 [PMID: [34675886](https://pubmed.ncbi.nlm.nih.gov/34675886/) DOI: [10.3389/fendo.2021.753810](https://doi.org/10.3389/fendo.2021.753810)]
  - 17 **Camerlingo N**, Vettoretti M, Sparacino G, Facchinetti A, Mader JK, Choudhary P, Del Favero S; Hypo-RESOLVE Consortium. Choosing the duration of continuous glucose monitoring for reliable assessment of time in range: A new analytical approach to overcome the limitations of correlation-based methods. *Diabet Med* 2022; **39**: e14758 [PMID: [34862829](https://pubmed.ncbi.nlm.nih.gov/34862829/) DOI: [10.1111/dme.14758](https://doi.org/10.1111/dme.14758)]
  - 18 **Danne T**, Nimri R, Battelino T, Bergenstal RM, Close KL, DeVries JH, Garg S, Heinemann L, Hirsch I, Amiel SA, Beck R, Bosi E, Buckingham B, Cobelli C, Dassau E, Doyle FJ 3rd, Heller S, Hovorka R, Jia W, Jones T, Kordonouri O, Kovatchev B, Kowalski A, Laffel L, Maahs D, Murphy HR, Nørgaard K, Parkin CG, Renard E, Saboo B, Scharf M, Tamborlane WV, Weinzimer SA, Phillip M. International Consensus on Use of Continuous Glucose Monitoring. *Diabetes Care* 2017; **40**: 1631-1640 [PMID: [29162583](https://pubmed.ncbi.nlm.nih.gov/29162583/) DOI: [10.2337/dc17-1600](https://doi.org/10.2337/dc17-1600)]
  - 19 **Battelino T**, Alexander CM, Amiel SA, Arreaza-Rubin G, Beck RW, Bergenstal RM, Buckingham BA, Carroll J, Ceriello A, Chow E, Choudhary P, Close K, Danne T, Dutta S, Gabbay R, Garg S, Heverly J, Hirsch IB, Kader T, Kenney J, Kovatchev B, Laffel L, Maahs D, Mathieu C, Mauricio D, Nimri R, Nishimura R, Scharf M, Del Prato S, Renard E, Rosenstock J, Saboo B, Ueki K, Umpierrez GE, Weinzimer SA, Phillip M. Continuous glucose monitoring and metrics for clinical trials: an international consensus statement. *Lancet Diabetes Endocrinol* 2023; **11**: 42-57 [PMID: [36493795](https://pubmed.ncbi.nlm.nih.gov/36493795/) DOI: [10.1016/S2213-8587\(22\)00319-9](https://doi.org/10.1016/S2213-8587(22)00319-9)]
  - 20 **Galindo RJ**, Migdal AL, Davis GM, Urrutia MA, Albury B, Zambrano C, Vellanki P, Pasquel FJ, Fayfman M, Peng L, Umpierrez GE. Comparison of the FreeStyle Libre Pro Flash Continuous Glucose Monitoring (CGM) System and Point-of-Care Capillary Glucose Testing in Hospitalized Patients With Type 2 Diabetes Treated With Basal-Bolus Insulin Regimen. *Diabetes Care* 2020; **43**: 2730-2735 [PMID: [32641372](https://pubmed.ncbi.nlm.nih.gov/32641372/) DOI: [10.2337/dc19-2073](https://doi.org/10.2337/dc19-2073)]
  - 21 **McCarter RJ**, Hempe JM, Gomez R, Chalew SA. Biological variation in HbA1c predicts risk of retinopathy and nephropathy in type 1 diabetes. *Diabetes Care* 2004; **27**: 1259-1264 [PMID: [15161772](https://pubmed.ncbi.nlm.nih.gov/15161772/) DOI: [10.2337/diacare.27.6.1259](https://doi.org/10.2337/diacare.27.6.1259)]
  - 22 **Ahn CH**, Min SH, Lee DH, Oh TJ, Kim KM, Moon JH, Choi SH, Park KS, Jang HC, Ha J, Sherman AS, Lim S. Hemoglobin Glycation Index Is Associated With Cardiovascular Diseases in People With Impaired Glucose Metabolism. *J Clin Endocrinol Metab* 2017; **102**: 2905-2913 [PMID: [28541544](https://pubmed.ncbi.nlm.nih.gov/28541544/) DOI: [10.1210/jc.2017-00191](https://doi.org/10.1210/jc.2017-00191)]
  - 23 **Hempe JM**, Liu S, Myers L, McCarter RJ, Buse JB, Fonseca V. The hemoglobin glycation index identifies subpopulations with harms or benefits from intensive treatment in the ACCORD trial. *Diabetes Care* 2015; **38**: 1067-1074 [PMID: [25887355](https://pubmed.ncbi.nlm.nih.gov/25887355/) DOI: [10.2337/dc14-1844](https://doi.org/10.2337/dc14-1844)]
  - 24 **Toschi E**, Slyné C, Sifre K, O'Donnell R, Greenberg J, Atakov-Castillo A, Carl S, Munshi M. The Relationship Between CGM-Derived Metrics, A1C, and Risk of Hypoglycemia in Older Adults With Type 1 Diabetes. *Diabetes Care* 2020; **43**: 2349-2354 [PMID: [32461211](https://pubmed.ncbi.nlm.nih.gov/32461211/) DOI: [10.2337/dc20-0016](https://doi.org/10.2337/dc20-0016)]
  - 25 **Yokota S**, Tanaka H, Mochizuki Y, Soga F, Yamashita K, Tanaka Y, Shono A, Suzuki M, Sumimoto K, Mukai J, Suto M, Takada H, Matsumoto K, Hirota Y, Ogawa W, Hirata KI. Association of glycemic variability with left ventricular diastolic function in type 2 diabetes mellitus. *Cardiovasc Diabetol* 2019; **18**: 166 [PMID: [31805945](https://pubmed.ncbi.nlm.nih.gov/31805945/) DOI: [10.1186/s12933-019-0971-5](https://doi.org/10.1186/s12933-019-0971-5)]
  - 26 **Costantino S**, Paneni F, Battista R, Castello L, Capretti G, Chianotto S, Tanese L, Russo G, Pitocco D, Lanza GA, Volpe M, Lüscher TF, Cosentino F. Impact of Glycemic Variability on Chromatin Remodeling, Oxidative Stress, and Endothelial Dysfunction in Patients With Type 2 Diabetes and With Target HbA(1c) Levels. *Diabetes* 2017; **66**: 2472-2482 [PMID: [28634176](https://pubmed.ncbi.nlm.nih.gov/28634176/) DOI: [10.2337/db17-0294](https://doi.org/10.2337/db17-0294)]
  - 27 **International Hypoglycaemia Study Group**. Hypoglycaemia, cardiovascular disease, and mortality in diabetes: epidemiology, pathogenesis, and management. *Lancet Diabetes Endocrinol* 2019; **7**: 385-396 [PMID: [30926258](https://pubmed.ncbi.nlm.nih.gov/30926258/) DOI: [10.1016/S2213-8587\(18\)30315-2](https://doi.org/10.1016/S2213-8587(18)30315-2)]
  - 28 **Bergenstal RM**, Hachmann-Nielsen E, Kvist K, Peters AL, Tarp JM, Buse JB. Increased Derived Time in Range Is Associated with Reduced Risk of Major Adverse Cardiovascular Events, Severe Hypoglycemia, and Microvascular Events in Type 2 Diabetes: A Post Hoc Analysis of DEVOTE. *Diabetes Technol Ther* 2023; **25**: 378-383 [PMID: [37017470](https://pubmed.ncbi.nlm.nih.gov/37017470/) DOI: [10.1089/dia.2022.0447](https://doi.org/10.1089/dia.2022.0447)]
  - 29 **Lu J**, Wang C, Shen Y, Chen L, Zhang L, Cai J, Lu W, Zhu W, Hu G, Xia T, Zhou J. Time in Range in Relation to All-Cause and Cardiovascular Mortality in Patients With Type 2 Diabetes: A Prospective Cohort Study. *Diabetes Care* 2021; **44**: 549-555 [PMID: [33097560](https://pubmed.ncbi.nlm.nih.gov/33097560/) DOI: [10.2337/dc20-1862](https://doi.org/10.2337/dc20-1862)]
  - 30 **Klonoff DC**, Wang J, Rodbard D, Kohn MA, Li C, Liepmann D, Kerr D, Ahn D, Peters AL, Umpierrez GE, Seley JJ, Xu NY, Nguyen KT, Simonson G, Agus MSD, Al-Sofiani ME, Armaiz-Pena G, Bailey TS, Basu A, Battelino T, Bekele SY, Benhamou PY, Bequette BW, Blevins T, Breton MD, Castle JR, Chase JG, Chen KY, Choudhary P, Clements MA, Close KL, Cook CB, Danne T, Doyle FJ 3rd, Drincic A, Dungan

- KM, Edelman SV, Ejlskjaer N, Espinoza JC, Fleming GA, Forlenza GP, Freckmann G, Galindo RJ, Gomez AM, Gutow HA, Heinemann L, Hirsch IB, Hoang TD, Hovorka R, Jendle JH, Ji L, Joshi SR, Joubert M, Koliwad SK, Lal RA, Lansang MC, Lee WA, Leelarathna L, Leiter LA, Lind M, Litchman ML, Mader JK, Mahoney KM, Mankovsky B, Masharani U, Mathioudakis NN, Mayorov A, Messler J, Miller JD, Mohan V, Nichols JH, Nørgaard K, O'Neal DN, Pasquel FJ, Philis-Tsimikas A, Pieber T, Phillip M, Polonsky WH, Pop-Busui R, Rayman G, Rhee EJ, Russell SJ, Shah VN, Sherr JL, Sode K, Spanakis EK, Wake DJ, Waki K, Wallia A, Weinberg ME, Wolpert H, Wright EE, Zilbermint M, Kovatchev B. A Glycemia Risk Index (GRI) of Hypoglycemia and Hyperglycemia for Continuous Glucose Monitoring Validated by Clinician Ratings. *J Diabetes Sci Technol* 2023; **17**: 1226-1242 [PMID: [35348391](#) DOI: [10.1177/19322968221085273](#)]
- 31 **Rodbard D.** Metrics to Evaluate Quality of Glycemic Control: Comparison of Time in Target, Hypoglycemic, and Hyperglycemic Ranges with "Risk Indices". *Diabetes Technol Ther* 2018; **20**: 325-334 [PMID: [29792750](#) DOI: [10.1089/dia.2017.0416](#)]
- 32 **van Beers CAJ,** Caris MG, DeVries JH, Serné EH. The relation between HbA1c and hypoglycemia revisited; a secondary analysis from an intervention trial in patients with type 1 diabetes and impaired awareness of hypoglycemia. *J Diabetes Complications* 2018; **32**: 100-103 [PMID: [29054335](#) DOI: [10.1016/j.jdiacomp.2017.09.005](#)]
- 33 **Brownlee M,** Hirsch IB. Glycemic variability: a hemoglobin A1c-independent risk factor for diabetic complications. *JAMA* 2006; **295**: 1707-1708 [PMID: [16609094](#) DOI: [10.1001/jama.295.14.1707](#)]
- 34 **Kohnert KD,** Augstein P, Heinke P, Zander E, Peterson K, Freyse EJ, Salzsieder E. Chronic hyperglycemia but not glucose variability determines HbA1c levels in well-controlled patients with type 2 diabetes. *Diabetes Res Clin Pract* 2007; **77**: 420-426 [PMID: [17331614](#) DOI: [10.1016/j.diabres.2007.01.021](#)]
- 35 **Munshi MN.** Cognitive Dysfunction in Older Adults With Diabetes: What a Clinician Needs to Know. *Diabetes Care* 2017; **40**: 461-467 [PMID: [28325796](#) DOI: [10.2337/dc16-1229](#)]
- 36 **Munshi MN,** Segal AR, Slyne C, Samur AA, Brooks KM, Horton ES. Shortfalls of the use of HbA1C-derived eAG in older adults with diabetes. *Diabetes Res Clin Pract* 2015; **110**: 60-65 [PMID: [26272739](#) DOI: [10.1016/j.diabres.2015.07.012](#)]
- 37 **Bailey R,** Calhoun P, Bergenstal RM, Beck RW. Assessment of the Glucose Management Indicator Using Different Sampling Durations. *Diabetes Technol Ther* 2023; **25**: 148-150 [PMID: [36130138](#) DOI: [10.1089/dia.2022.0284](#)]



Published by **Baishideng Publishing Group Inc**  
7041 Koll Center Parkway, Suite 160, Pleasanton, CA 94566, USA

**Telephone:** +1-925-3991568

**E-mail:** [office@baishideng.com](mailto:office@baishideng.com)

**Help Desk:** <https://www.f6publishing.com/helpdesk>

<https://www.wjgnet.com>

