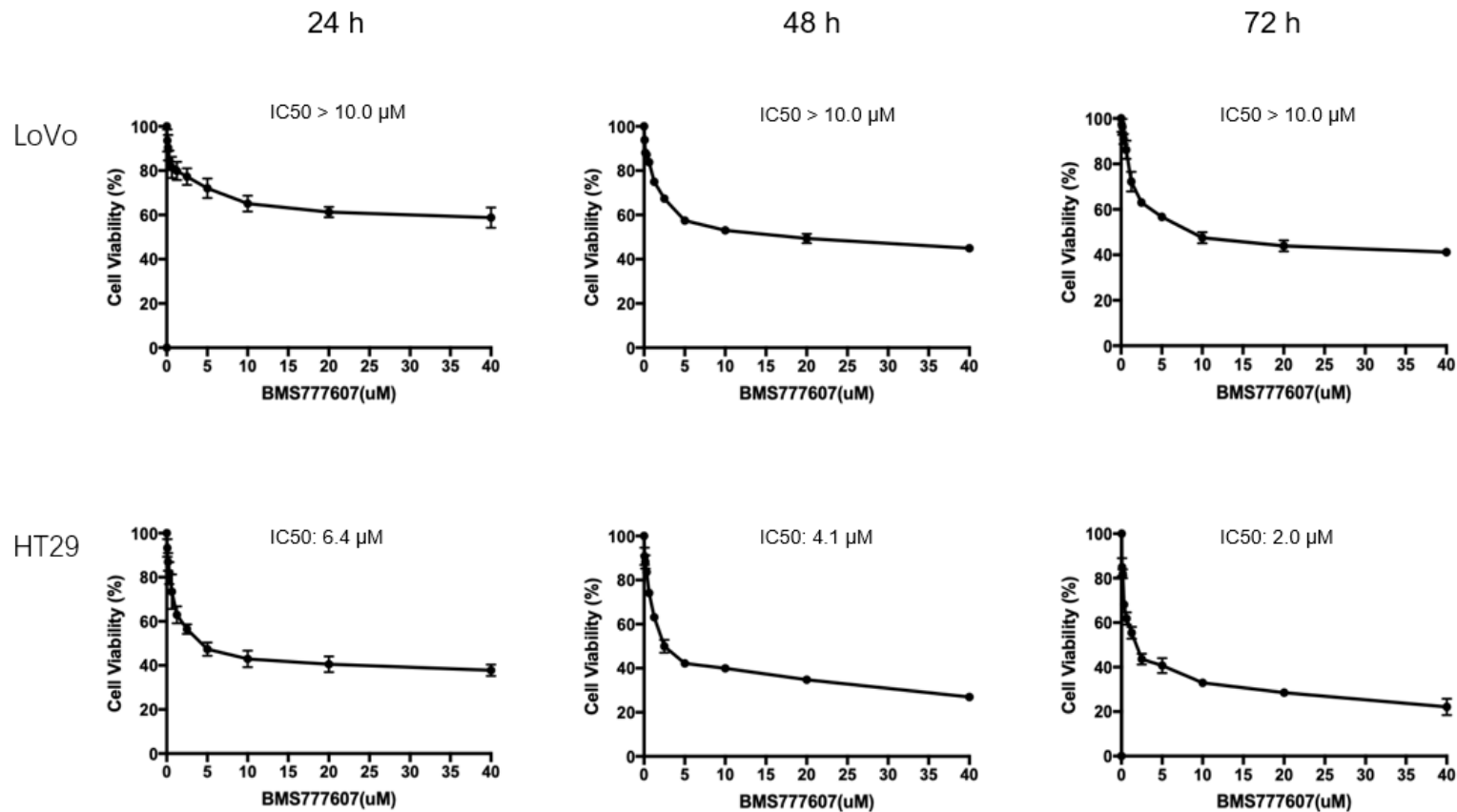


**Supplementary Figure 1 Flow cytometric determination of RON and PD-L1 expression in CRC cells.** CRC cells ( $1 \times 10^6$  cells/mL) resuspended in 1 mL PBS were incubated with 5.0  $\mu$ g Zt/g4 (yellow line) at room temperature for 60 min. Isotypes without antibodies matching mouse IgG (blue line) and blank (red line) were used as controls. CRC cells ( $1 \times 10^6$  cells/mL) resuspended in 1 mL PBS were incubated with rabbit anti-human PD-L1 (green line) for 30 min. Rabbit IgG without antibodies (blue line) and blank (red line) were used as controls.



**Supplementary Figure 2 Effects of BMS-777607 on the viability of colorectal cancer cells.** LoVo and HT29 cells (in triplicates of  $1 \times 10^4$  cells per well in 96-well plates) were treated with BMS-777607 at different concentrations for 24 h, 48 h and 72 h. The viability of colorectal cancer cells treated with BMS-777607 was measured by CCK-8 assay. The data shown are from one of three representative experiments, all with similar results.