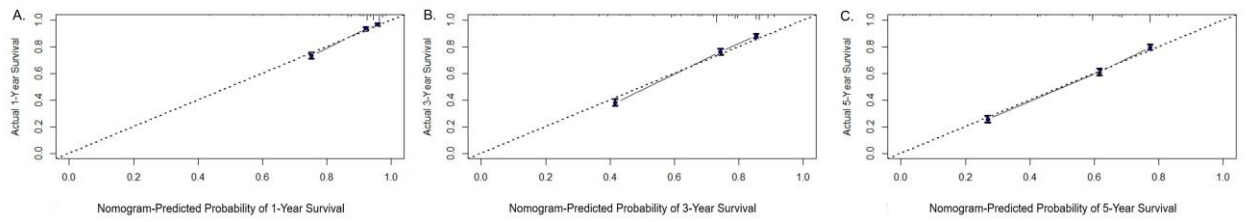
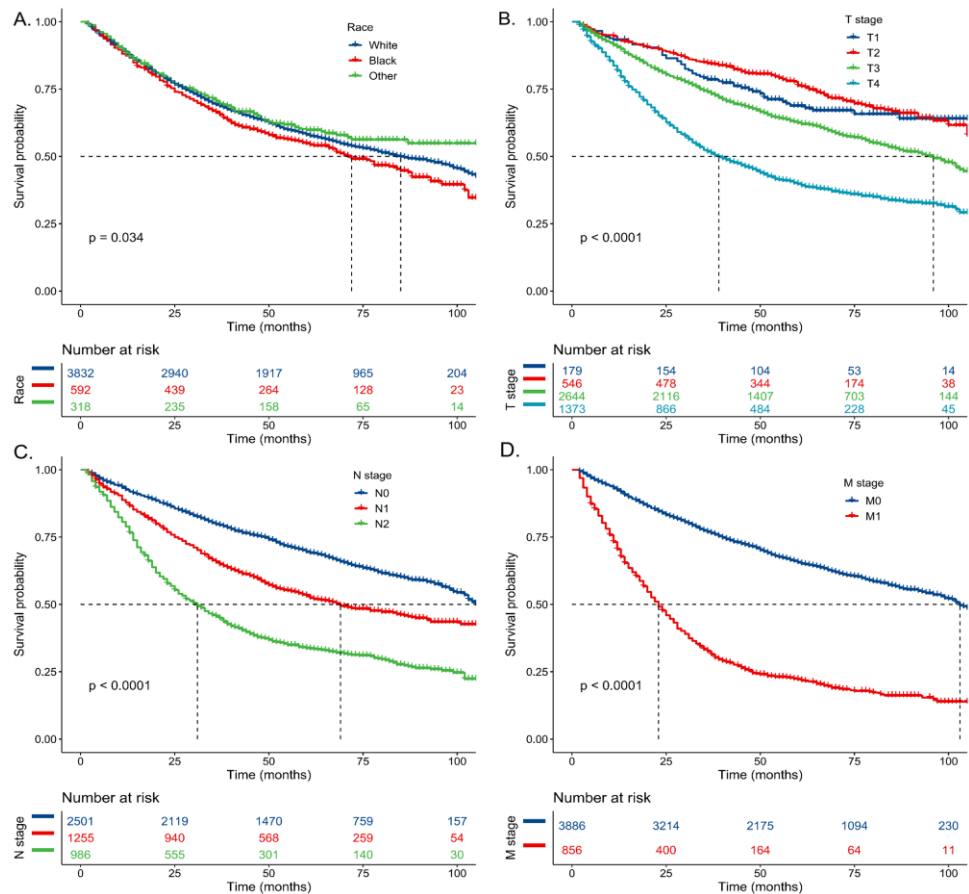


**Supplementary Figure 1 Age-adjusted incidence rate of mucinous CRC by sex and race.** <sup>a</sup>The annual percent change is significantly different from zero at alpha = 0.05.



**Supplementary Figure 2 Calibration curves for evaluating the accuracy of the nomogram.** A: 1-year OS in patients with mucinous CRC; B: 3-year OS in patients with mucinous CRC; C: 5-year OS in patients with mucinous CRC.



**Supplementary Figure 3 The Kaplan–Meier survival curves for predicting overall survival for patients with mucinous CRCs. A: survival probability over time by race; B: survival probability over time by T stage; C: survival probability over time by N stage; D: survival probability over time by M stage.**

**Supplementary Table 1 Baseline clinicopathological characteristics of mucinous colorectal cancer**

Variable	No.	(% of patients)	Initial cohort (n = 6,775)	Training cohort (n = 4,742)	Validation cohort (n = 2,033)
Age					
< 40	285	(4.2)		211 (4.4)	74 (3.6)
40-69	3542	(52.3)		2492 (52.6)	1050 (51.6)
≥ 70	2948	(43.5)		2039 (43.0)	909 (44.7)
Sex					
Male	3220	(47.5)		2266 (47.8)	954 (46.9)
Female	3555	(52.5)		2476 (52.2)	1079 (53.1)
Race					
White	5421	(80.0)		3832 (80.8)	1589 (78.2)
Black	872	(12.9)		592 (12.5)	280 (13.8)
Other <sup>1</sup>	482	(7.1)		318 (6.7)	164 (8.1)
Tumor site					
Proximal colon	3428	(50.6)		2387 (50.3)	1041 (51.2)
Transverse colon	589	(8.7)		401 (8.5)	188 (9.2)
Distal colon	1591	(23.5)		1110 (23.4)	481 (23.7)
Rectum	648	(9.6)		461 (9.7)	187 (9.2)
Appendix	519	(7.7)		383 (8.1)	136 (6.7)
Tumor size, mm					
≤ 30	1177	(17.4)		857 (18.1)	320 (15.7)
31-59	2635	(38.9)		1839 (38.8)	796 (39.2)
≥ 60	2963	(43.7)		2046 (43.1)	917 (45.1)
Grade <sup>2</sup>					

I	781 (11.5)	547 (11.5)	234 (11.5)
II	4491 (66.3)	3139 (66.2)	1352 (66.5)
III	1190 (17.6)	829 (17.5)	361 (17.8)
IV	313 (4.6)	227 (4.8)	86 (4.2)
Disease stage			
Localized	1922 (28.4)	1356 (28.6)	566 (27.8)
Regional	3461 (51.1)	2410 (50.8)	1051 (51.7)
Distant	1392 (20.5)	976 (20.6)	416 (20.5)
AJCC TNM stage			
I	785 (11.6)	560 (11.8)	225 (11.1)
II	2426 (35.8)	1689 (35.6)	737 (36.3)
III	2334 (34.5)	1637 (34.5)	697 (34.3)
IV	1230 (18.2)	856 (18.1)	374 (18.4)
AJCC T stage			
T1	254 (3.7)	179 (3.8)	75 (3.7)
T2	756 (11.2)	546 (11.5)	210 (10.3)
T3	3788 (55.9)	2644 (55.8)	1144 (56.3)
T4	1977 (29.2)	1373 (29.0)	604 (29.7)
AJCC N stage			
N0	3553 (52.4)	2501 (52.7)	1052 (51.7)
N1	1810 (26.7)	1255 (26.5)	555 (27.3)
N2	1412 (20.8)	986 (20.8)	426 (21.0)
AJCC M stage			
M0	5545 (81.8)	3886 (81.9)	1659 (81.6)
M1	1230 (18.2)	856 (18.1)	374 (18.4)
Surgery			
Yes	6700 (98.9)	4687 (98.8)	2013 (99.0)

No/Unknown	75 (1.1)	55 (1.2)	20 (1.0)
Radiation			
Yes	668 (9.9)	490 (10.3)	178 (8.8)
No/Unknown	6107 (90.1)	4252 (89.7)	1855 (91.2)
Chemotherapy			
Yes	3182 (47.0)	2220 (46.8)	962 (47.3)
No/Unknown	3593 (53.0)	2522 (53.2)	1071 (52.7)

---

<sup>1</sup>Defined as the Asian/Pacific Islander and American Indian/Alaska Native.

<sup>2</sup>Grade: I, well differentiated; II, moderately differentiated; III, poorly differentiated; IV, undifferentiated.

**Supplementary Table 2 Detailed score of specific clinicopathological factors in the nomogram**

<b>Characteristics</b>	<b>Score</b>
Age	
< 40	0
40-69	15
≥ 70	55
Race	
White	5
Black	19
Other <sup>1</sup>	0
Tumor site	
Proximal colon	39
Transverse colon	32
Distal colon	48
Rectum	47
Appendix	0
T stage	
T1	0
T2	1
T3	21
T4	54
N stage	
N0	0
N1	32
N2	59
M stage	
M0	0
M1	77

Surgery	
Yes	0
No/Unknown	100
Chemotherapy	
Yes	0
No/Unknown	29
Total point for 1-year OS	
0.1	360
0.2	337
0.3	319
0.4	302
0.5	285
0.6	266
0.7	243
0.8	214
0.9	167
Total point for 3-year OS	
0.1	279
0.2	257
0.3	239
0.4	222
0.5	204
0.6	185
0.7	163
0.8	134
0.9	87
Total point for 5-year OS	
0.1	249
0.2	227



0.3	209
0.4	192
0.5	175
0.6	156
0.7	133
0.8	104
0.9	57

---

<sup>1</sup>Defined as the Asian/Pacific Islander and American Indian/Alaska Native.