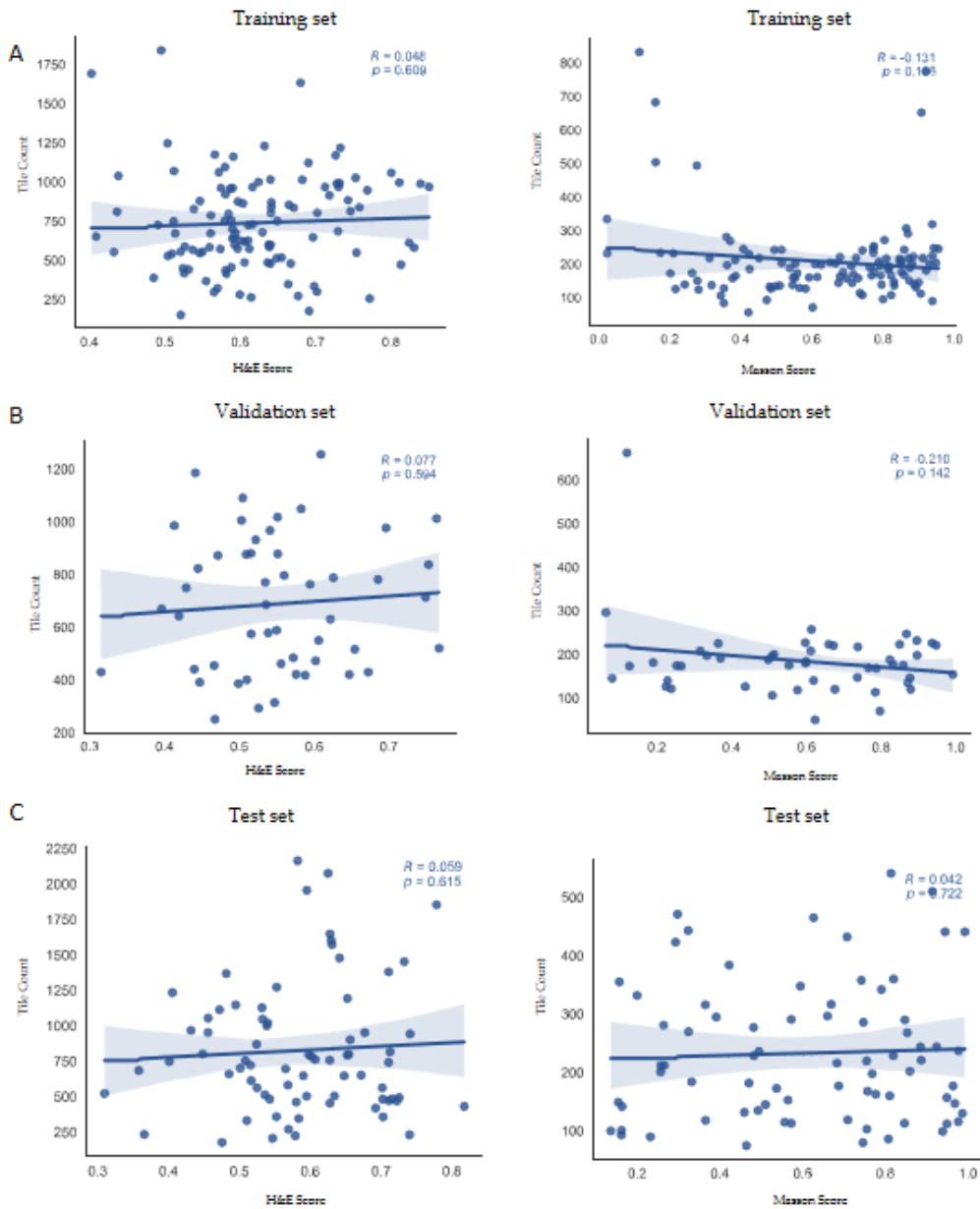


Supplementary Figure 1 Stain normalization. Left: Before normalization; right: After normalization.



Supplementary Figure 2 Correlation between the number of image tiles and model performance. A: The correlation between the number of image tiles and Hematoxylin-eosin (HE, left) or Masson score (right) in the training set. B: The correlation between the number of image tiles and H&E (left) or Masson score (right) in the validation set. C: The correlation between the number of image tiles and H&E (left) or Masson score (right) in the test set.

Supplementary Table 1 Patient distribution and histopathological image acquisition details across participating centers

Center	Number	Staining scanner (Masson)	Magnification (Masson)	File format (Masson)	Staining scanner (H&E)	Magnification (H&E)	File format (H&E)
Traditional Chinese Medicine Hospital of Chongqing	5	NanoZoomer	20x	NDPI	3DHistech	40x	MRXS
Affiliated Traditional Chinese Medicine Hospital of Southwest Medical University	2	NanoZoomer	20x	NDPI	3DHistech	40x	MRXS
The 88th Hospital of PLA	1	NanoZoomer	20x	NDPI	3DHistech	40x	MRXS
Fuyang 2nd People's Hospital	13	NanoZoomer	20x	NDPI	3DHistech	40x	MRXS
Guangzhou 8th People's Hospital	3	NanoZoomer	20x	NDPI	3DHistech	40x	MRXS
The First Affiliated Hospital	14	NanoZoomer	20x	NDPI	3DHistech	40x	MRXS

of Wenzhou Medical
University

Shanghai Public Health Clinical Center	1	NanoZoomer	20x	NDPI	3DHistech	40x	MRXS
Fuzhou Infectious Diseases Hospital	9	NanoZoomer	20x	NDPI	3DHistech	40x	MRXS
Affiliated Hospital of Chengdu University of Traditional Chinese Medicine	1	NanoZoomer	20x	NDPI	3DHistech	40x	MRXS
The First Affiliated Hospital of Zhengzhou University	10	NanoZoomer	20x	NDPI	3DHistech	40x	MRXS
Tianjin Second People's Hospital	4	NanoZoomer	20x	NDPI	3DHistech	40x	MRXS
The Third Military Medical University	10	NanoZoomer	20x	NDPI	3DHistech	40x	MRXS
Fifth Medical Center of	164	NanoZoomer	20x	NDPI	3DHistech	40x	MRXS

Chinese PLA General

Hospital

Department of Clinical & 1

NanoZoomer 20x

NDPI

3DHistech 40x

MRXS

Translational Medicine

H&E: hematoxylin and eosin.