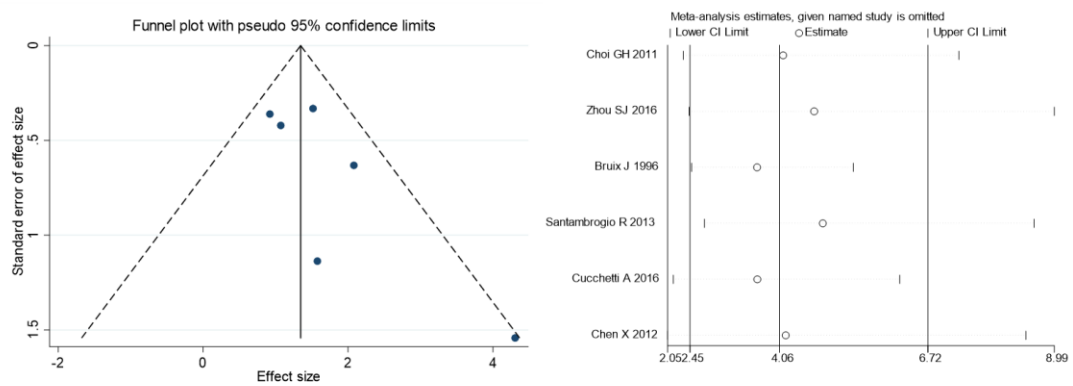
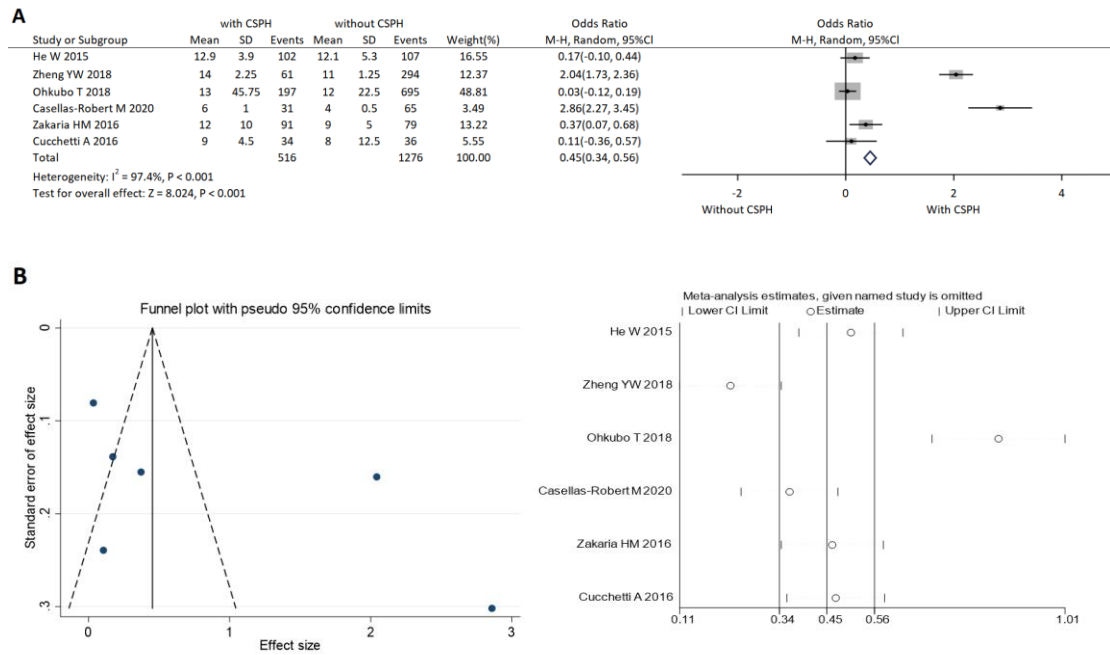


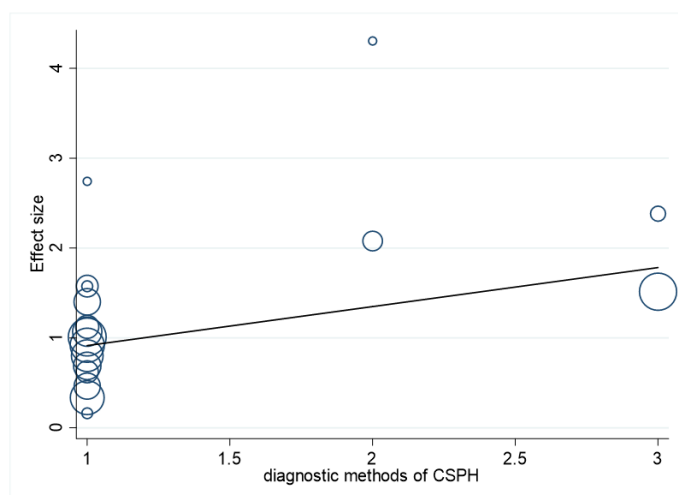
Supplementary Figure 1 Funnel plot and sensitivity analysis (PHLF).



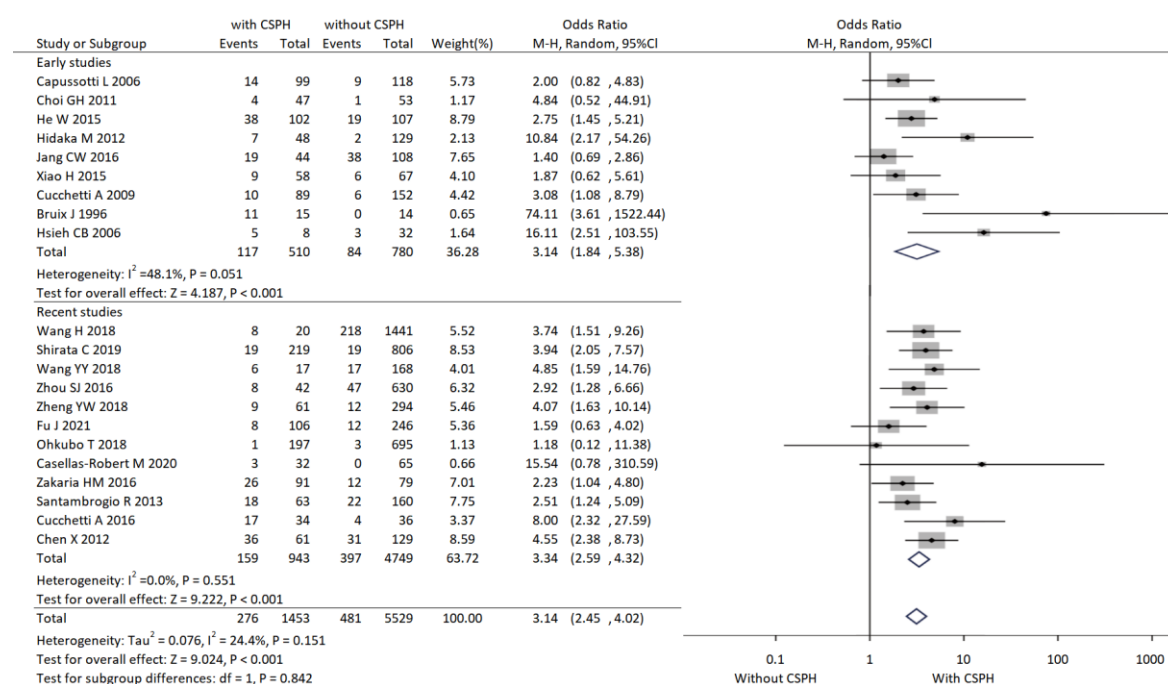
Supplemental Figure 2 Funnel plot and sensitivity analysis (PHLF in Child-Pugh A stage patients).



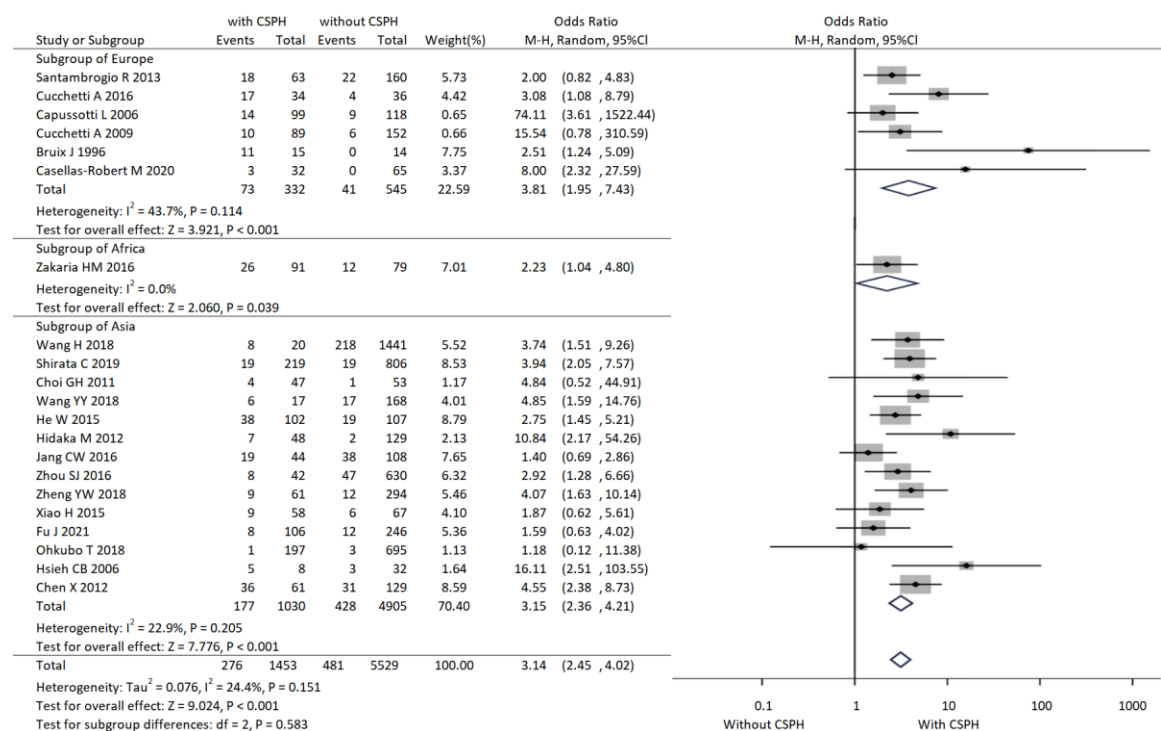
Supplemental Figure 3 A: Impact of CSPH on the postoperative hospital stay of patients in the included studies; B: Funnel plot and sensitivity analysis.



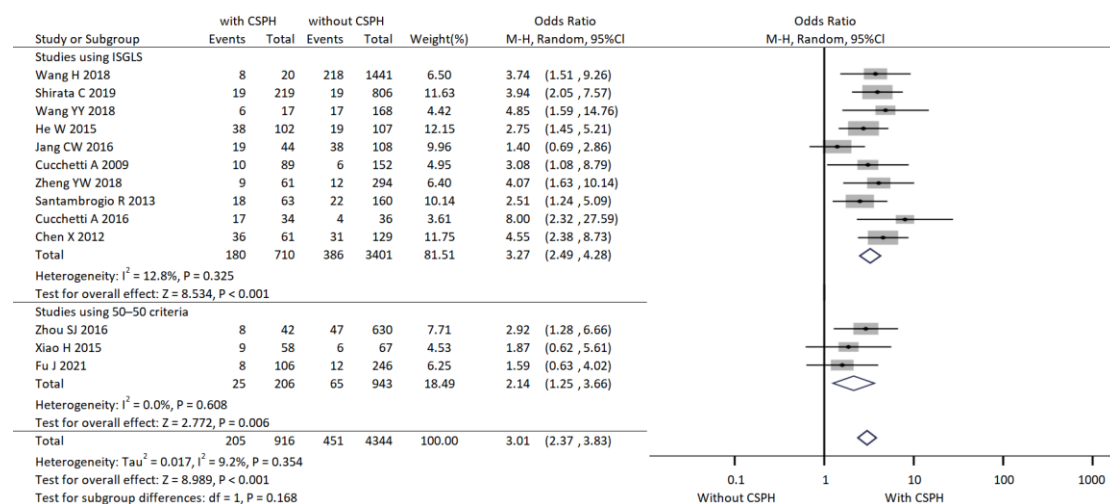
Supplemental Figure 4 Meta-regression plot of stratified meta-analysis (By the method of CSHP diagnosis).



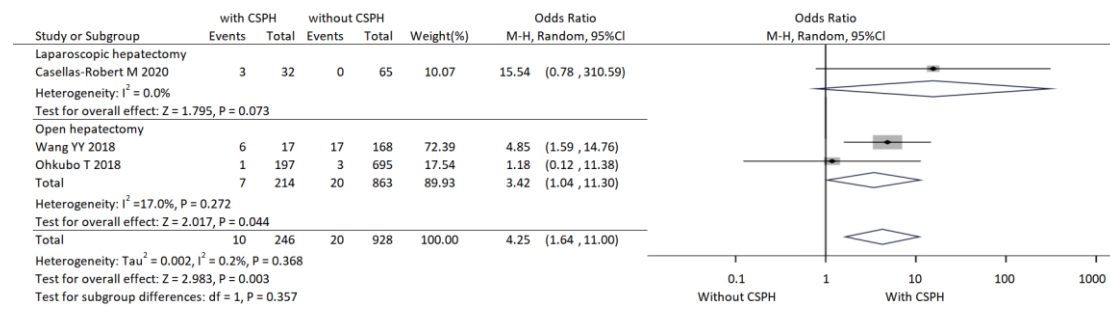
Supplemental Figure 5 Stratified meta-analysis of PHLF (Period of studies).



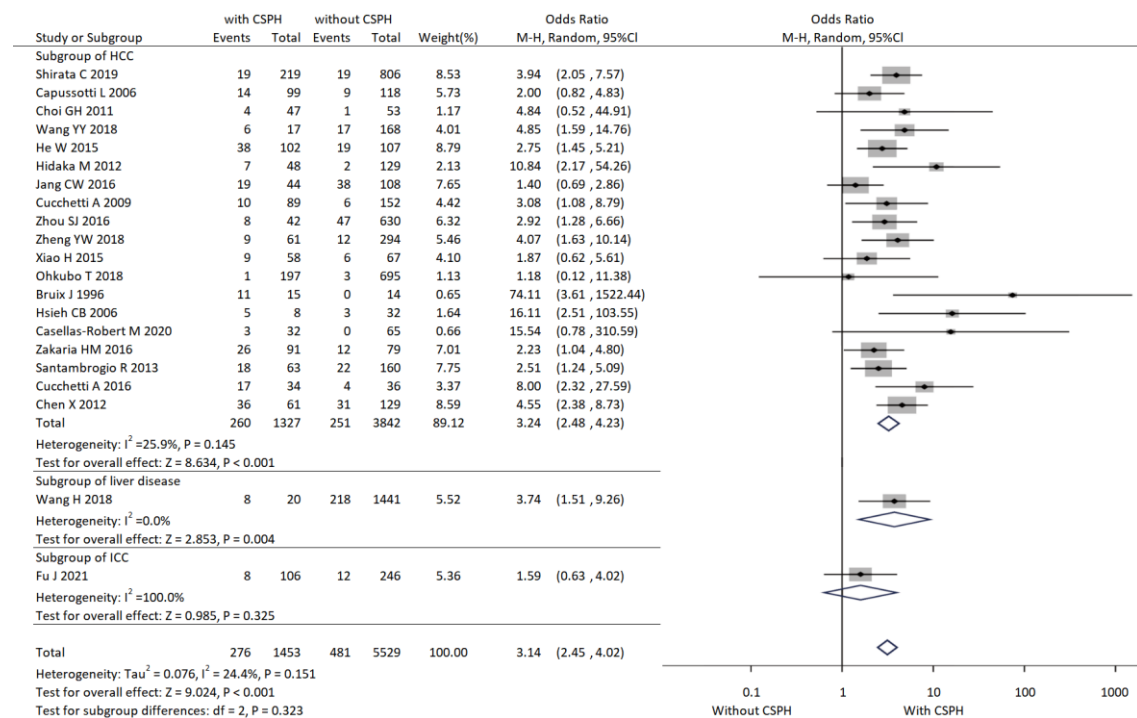
Supplemental Figure 6 Stratified meta-analysis of PHLF (By geographical area).



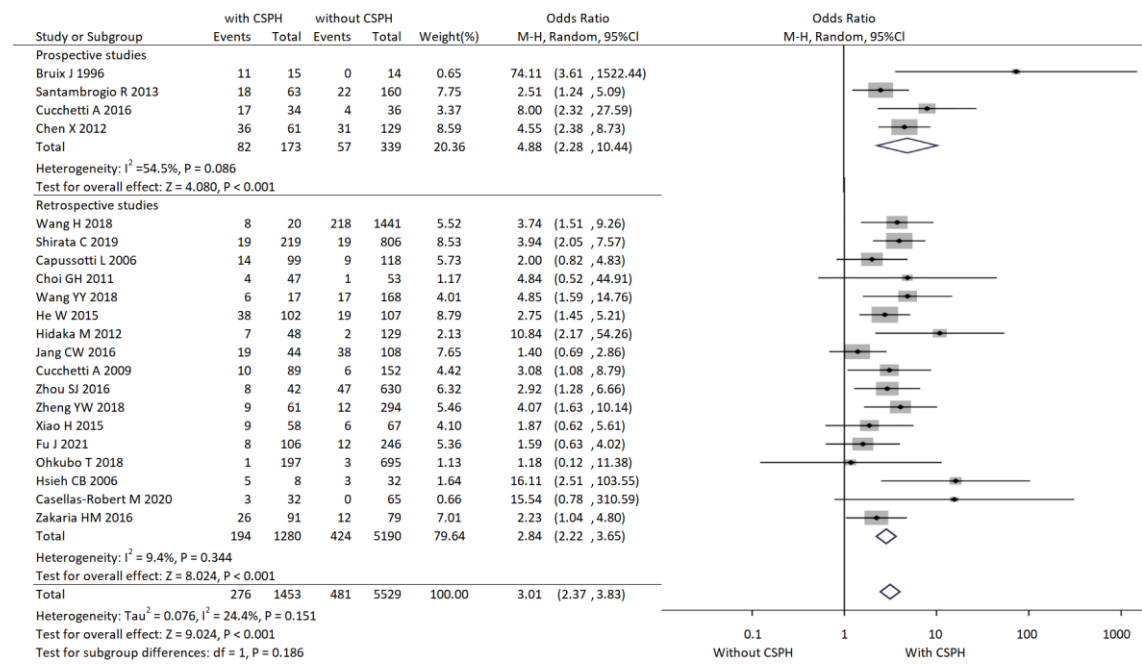
Supplemental Figure 7 Stratified meta-analysis of PHLF (By the definition of PHLF).



Supplemental Figure 8 Stratified meta-analysis of PHLF (Surgery types).



Supplemental Figure 9 Stratified meta-analysis of PHLF (By diseases).



Supplemental Figure 10 Stratified meta-analysis of PHLF (By study design).

Supplementary Table 1 Study quality, Newcastle-Ottawa Scale									
Study	Selection				comparability		Outcome		
	Adequate definition of cases	Representativeness of cases	Selection of controls	Representativeness of controls	Control important factor	for	Assessment of outcome	sufficiency of length of follow-up	Non response rate
Wang H 2018	★			★	★		★	★	★
Shirata C 2019	★	★	★	★	★★		★	★	★
Capussotti L 2006	★	★		★	★★		★	★	★
Choi GH 2011	★	★	★	★	★★			★	★
Wang YY 2018	★		★	★	★★		★	★	★
He W 2015		★	★	★	★		★	★	★
Hidaka M 2012	★	★		★	★★		★	★	★
Jang CW 2016	★	★	★	★	★		★	★	★
Cucchetti A 2009	★		★	★	★★		★	★	★
Zhou SJ 2016	★		★	★	★★		★	★	★
Zheng YW 2018	★	★	★	★	★★		★	★	★
Xiao H 2015	★	★	★	★	★★		★	★	★
Fu J 2021	★	★	★	★	★★			★	★
Ohkubo T 2018		★	★	★	★		★	★	★
Bruix J 1996	★	★	★	★	★★		★	★	★
Hsieh CB 2006	★		★	★	★★		★	★	★

Casellas-Robert M 2020	★	★	★	★	★	★	★	★	8
Zakaria HM 2016	★	★	★	★	★★	★	★	★	9
Santambrogio R 2013	★	★	★		★★	★	★	★	8
Cucchetti A 2016		★	★	★	★★	★	★	★	8
Chen X 2012	★	★	★	★	★	★	★		7
