

Supplementary Table 1 Univariate analysis

Variable	β	SE	<i>P</i> value
Age	-0.126	0.017	0.000
Gender (Female)	1.565	0.515	0.002
Ethnicity (Chinese)	-8.768	1.921	0.000
Weight (kg)	-0.089	0.020	0.000
BMI	-0.308	0.098	0.002
Total course of disease (Months)	-0.019	0.003	0.000
Is it currently in the acute phase (Yes)	6.037	0.705	0.000
Number of previous seizures	-0.701	0.091	0.000
Mean daily dose of other antipsychotics (Chlorpromazine equivalent dose)	-0.005	0.002	0.003
Baseline BPRS score	0.654	0.010	0.000
Baseline BPRS Score (Anxiety and Depression)	1.654	0.051	0.000
Baseline BPRS Score (Lack of vitality)	1.888	0.057	0.000
Baseline BPRS Score (Thought disorder)	2.008	0.044	0.000
Baseline BPRS Score (Activation)	2.349	0.061	0.000
Baseline BPRS Score (Hostile suspicion)	2.382	0.044	0.000
Dose intensity (mean daily dose), mg/day	0.315	0.058	0.000
Concomitant use of other antipsychotic medications (Yes)	-2.601	0.501	0.000
Number of other antipsychotic drugs	-1.897	0.351	0.000
Use of sedatives and hypnotics (Yes)	1.647	0.546	0.003
Number of sedative and hypnotic drugs	1.072	0.327	0.001
Use of mood-enhancing medications (Yes)	1.323	0.667	0.047
Number of affection-improving drugs	1.250	0.494	0.011

BMI: body mass index; BPRS: Brief Psychiatric Rating Scale; SE: standard error

Supplementary Table 2 Univariate logistic regression model of baseline BPRS total score and BPRS improvement at the last visit

Characteristic	OR	95%CI	P value
Baseline BPRS total score	1.058	1.051, 1.064	< 0.001

OR: Odds ratio, CI: Confidence interval.

Supplementary Table 3 Univariate logistic regression model of current episode duration and BPRS improvement at the last visit

Characteristic	OR	95%CI	P value
Current episode duration_month	0.987	0.979, 0.994	0.001

OR: Odds ratio, CI: Confidence interval.

Supplementary Table 4 Univariate logistic regression model of previous episodes and BPRS improvement at the last visit

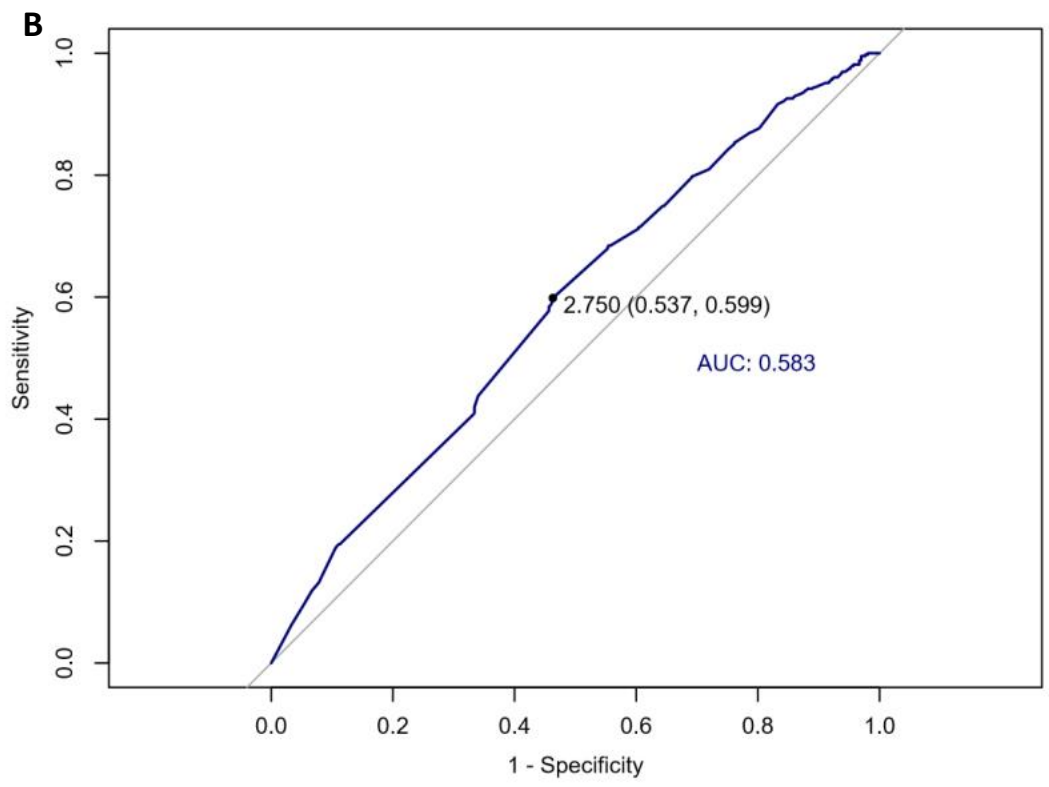
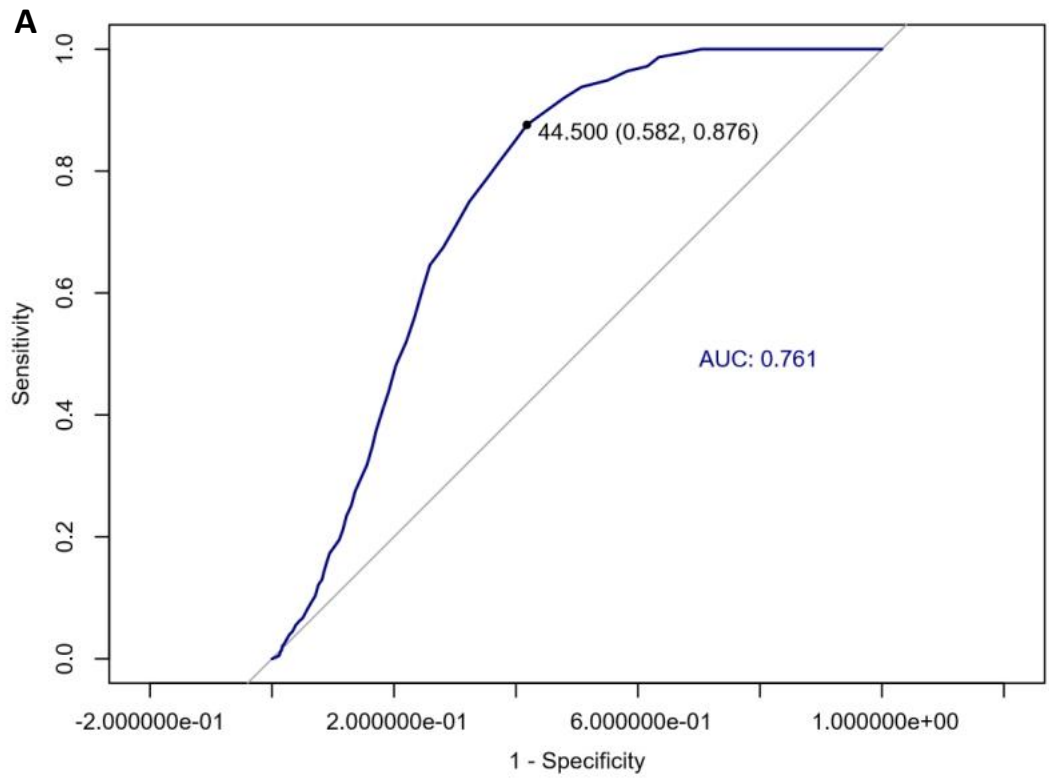
Characteristic	OR	95%CI	P value
Previous episodes	0.923	0.885, 0.958	< 0.001

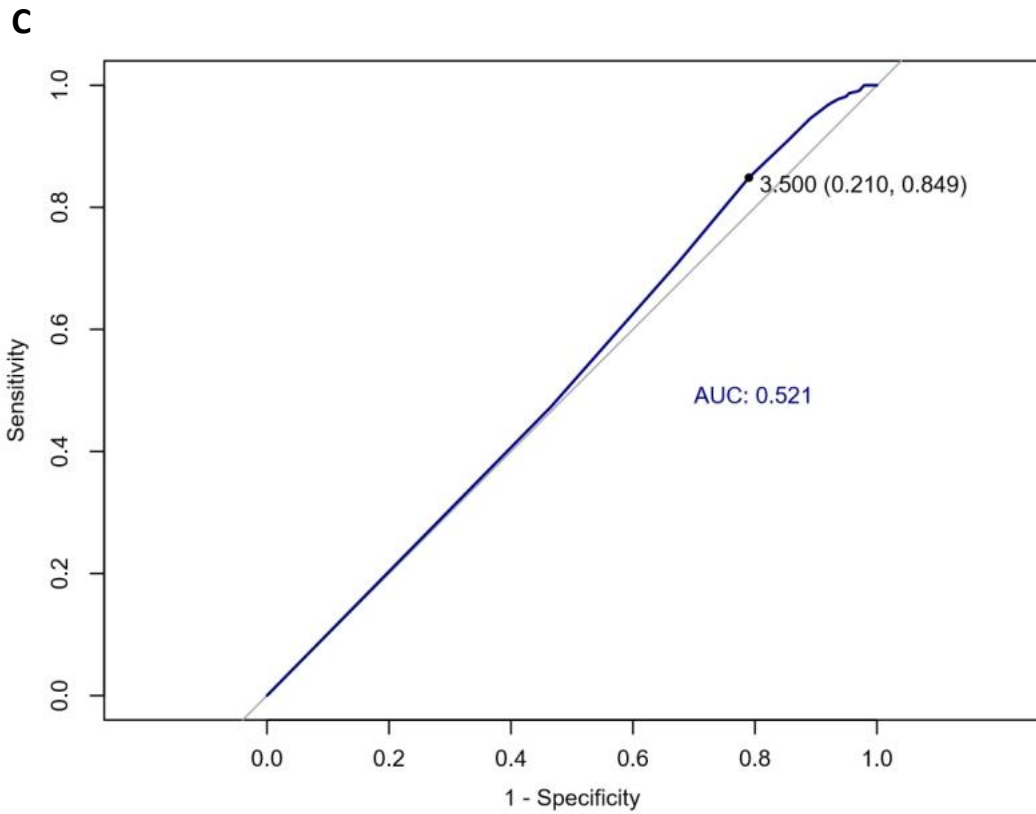
OR: Odds ratio, CI: Confidence interval.

Supplementary Table 5 Univariate logistic regression model of whether or not in the acute phase and BPRS improvement at the last visit

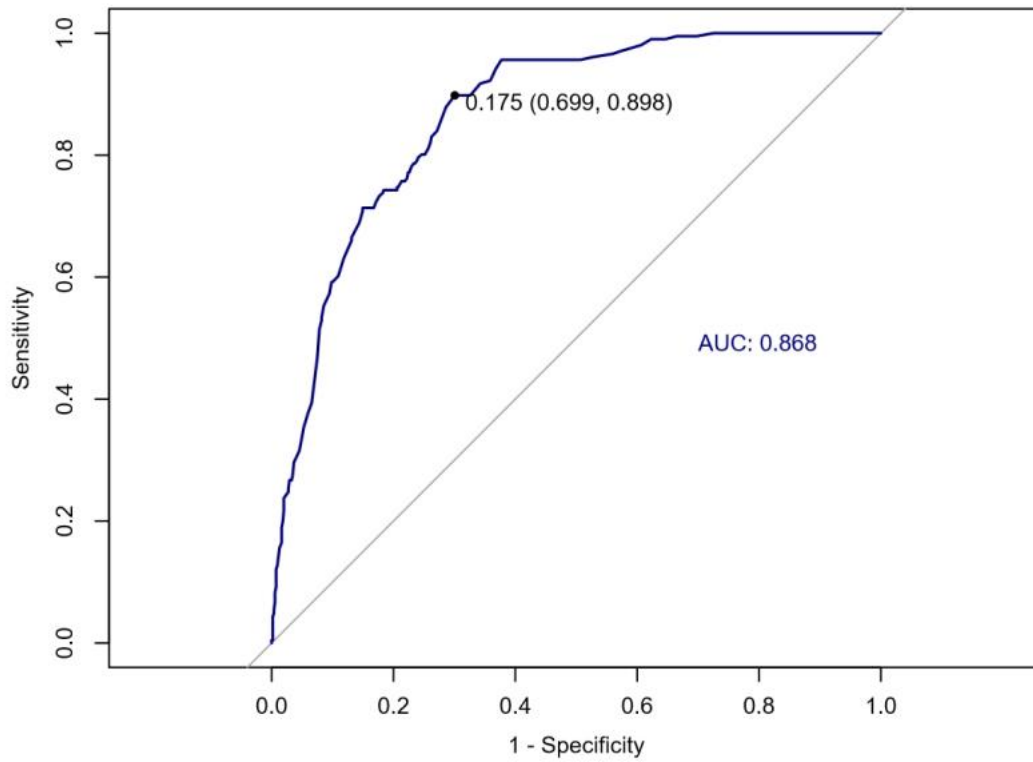
Characteristic	OR	95%CI	P value
Whether or not in the acute phase			
No	1.000	—	
Yes	3.231	2.517, 4.174	< 0.001

OR: Odds ratio, CI: Confidence interval.

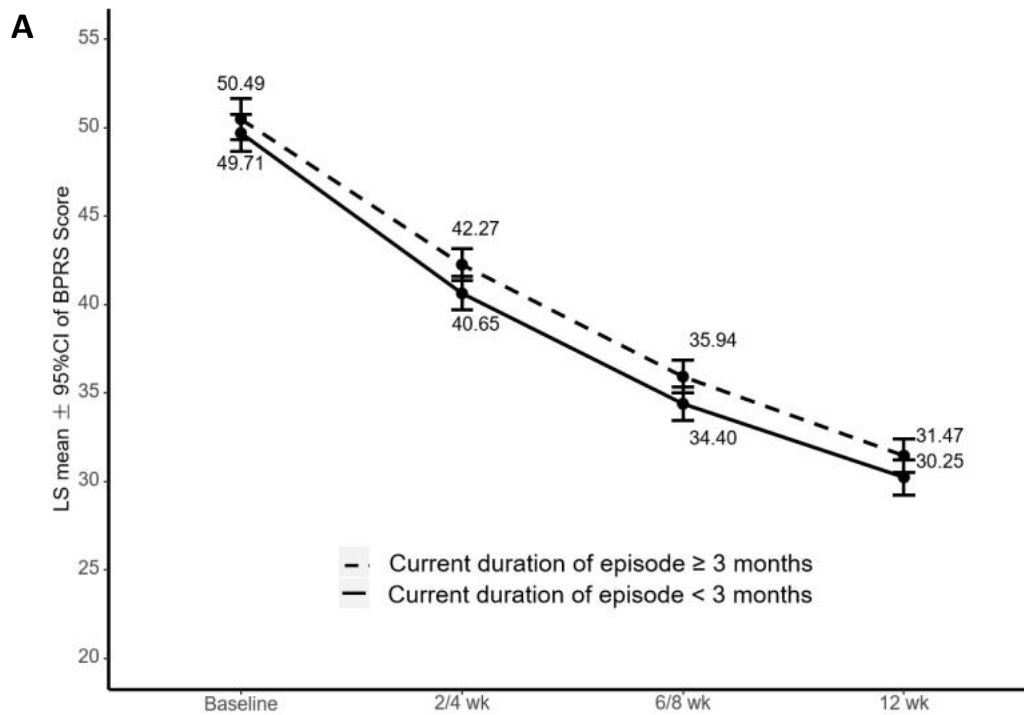


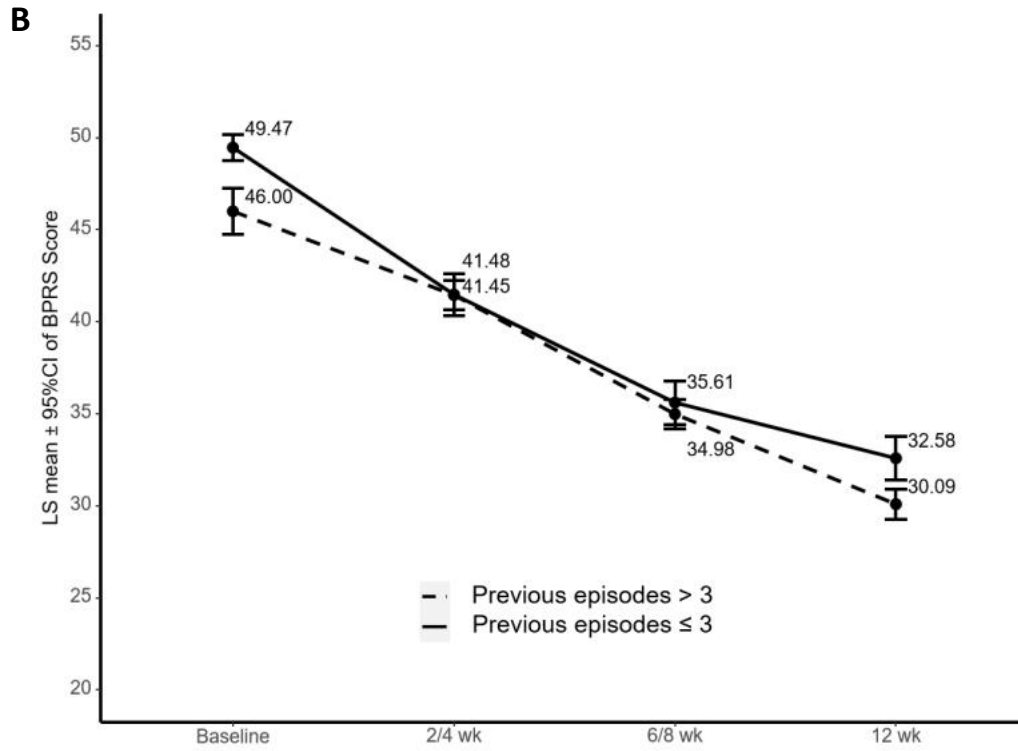


Supplementary Figure 1 Grouping based on (A) ROC of baseline BPRS total score and BPRS improvement at the last visit and (B) ROC of current episode duration and BPRS improvement at the last visit and (C) ROC of previous episodes and BPRS improvement at the last visit.



Supplementary Figure 2 Receiver operating characteristic (ROC) analysis of the predictive model of BPRS total score reduction.





Supplementary Figure 3 Grouping based on (A) Grouping based on current episode duration and (B) Grouping based on previous episodes.