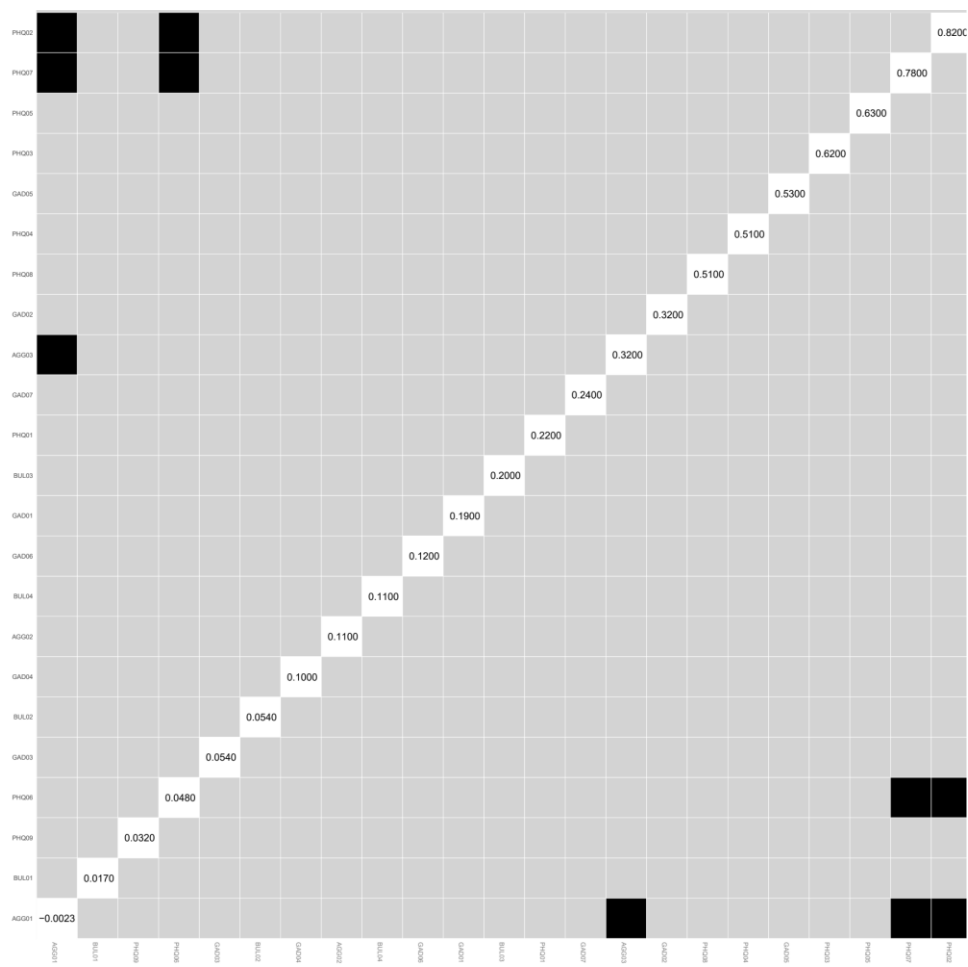
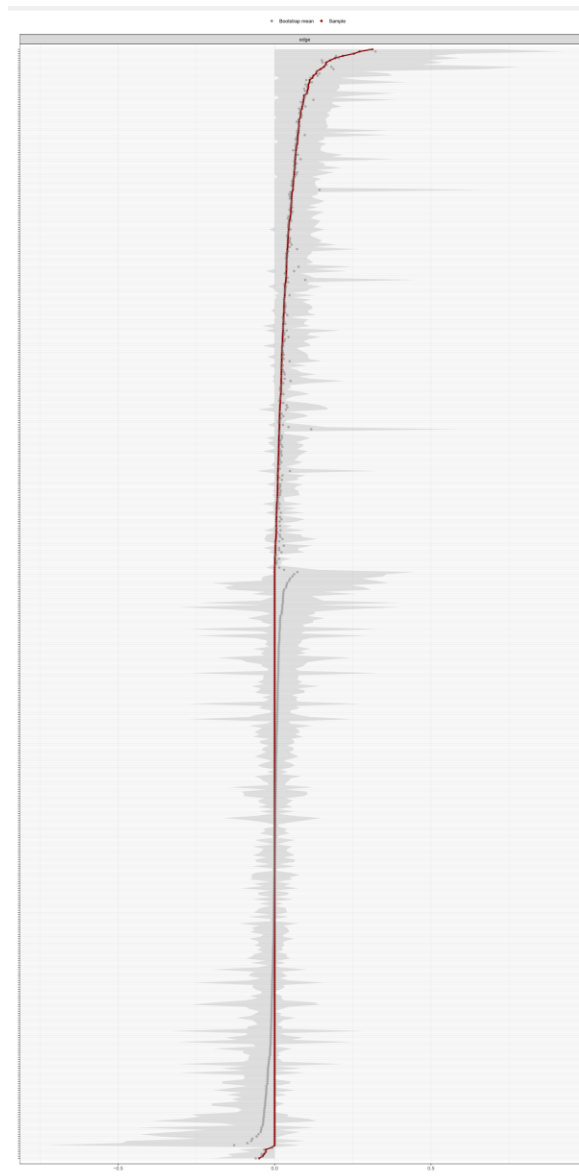


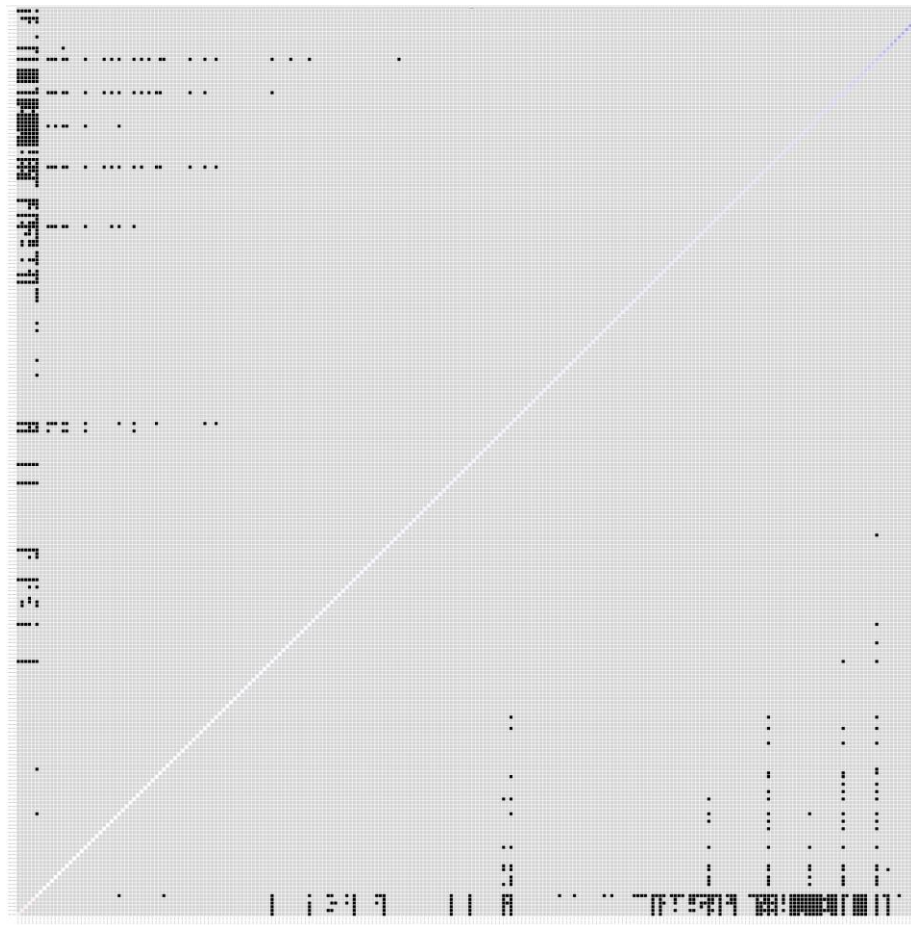
Supplementary Figure 1 Stability of the key elements for cross-lagged panel network.



Supplementary Figure 2 Bootstrapped the key elements difference for cross-lagged panel network, the black box represents a significant non-zero difference between two nodes, while the gray box is not significant.



Supplementary Figure 3 95% confidence intervals of each edge. The red dots represent sample edge weights, the gray dots represent the average edge weights from bootstrap, and the gray area represents the 95% confidence interval.



Supplementary Figure 4 Bootstrapped difference tests between edge weights,
the black box represents a significant non-zero difference between the
weights of two edges, while the gray box is not significant.