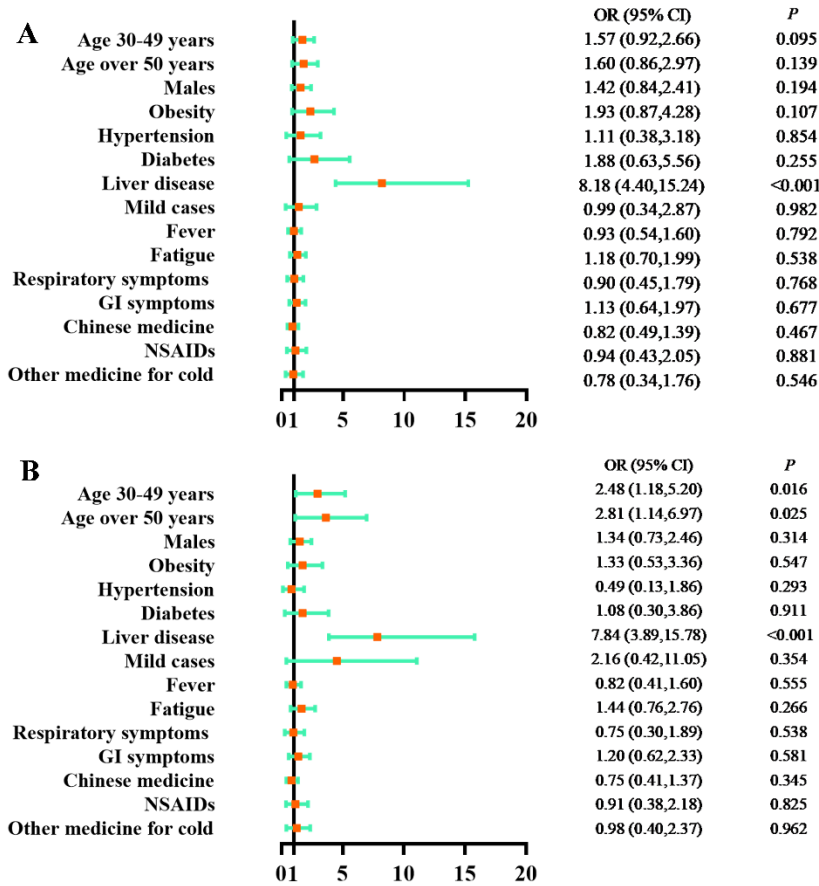


Supplementary Figure 1 Logistic regression models on factors associated with ALT. A: univariate logistic regression model; B: multivariate logistic regression model on key factors; C: multivariate logistic regression model on all factors; age: vs. age 14-29 years; GI: gastrointestinal; NSAIDs: nonsteroidal anti-inflammatory drugs; OR: odds ratio; CI: confidence interval.



Supplementary Figure 2 Logistic regression models on factors associated with AST. A: univariate logistic regression model; B: multivariate logistic regression model on all factors; age: vs. age 14-29 years; GI: gastrointestinal; NSAIDs: nonsteroidal anti-inflammatory drugs; OR: odds ratio; CI: confidence interval.

Supplementary Table 1 Liver tests of 661 patients with COVID-19

Characteristics	Liver tests				Total	P value
	Normal	Abnormal	Injury			
ALT, U/L, median (IQR)	21 (13-27)	50 (39-66)	199.5 (153.8-362.3)		22 (14.5-30)	< 0.001
Normal, <i>n</i> (%)	578 (100)	30 (39)	0 (0)		608 (92)	< 0.001
1-2×ULN, <i>n</i> (%)	0 (0)	44 (57.1)	0 (0)		44 (6.7)	
2-3×ULN, <i>n</i> (%)	0 (0)	3 (3.9)	1 (16.7)		4 (0.6)	
>3×ULN, <i>n</i> (%)	0 (0)	0 (0)	5 (83.3)		5 (0.8)	
AST, U/L, median (IQR)	19 (15-24)	44 (36.5-54.5)	176 (97-276.8)		20 (15-26.5)	< 0.001
Normal, <i>n</i> (%)	578 (100)	21 (27.2)	0 (0)		599 (90.6)	< 0.001
1-2×ULN, <i>n</i> (%)	0 (0)	52 (67.5)	0 (0)		52 (7.9)	
2-3×ULN, <i>n</i> (%)	0 (0)	4 (5.2)	3 (50)		7 (1.1)	
>3×ULN, <i>n</i> (%)	0 (0)	0 (0)	3 (50)		3 (0.5)	
TBIL, μmol/L, median (IQR)	7.6 (5.4-10)	8 (6.5-12)	12 (8.8-16.3)		7.8 (5.6-10)	< 0.001
Normal, <i>n</i> (%)	578 (100)	72 (93.5)	0 (0)		656 (99.2)	< 0.001
1-2×ULN, <i>n</i> (%)	0 (0)	4 (5.2)	0 (0)		4 (0.6)	
2-3×ULN, <i>n</i> (%)	0 (0)	1 (1.3)	0 (0)		1 (0.2)	
>3×ULN, <i>n</i> (%)	0 (0)	0 (0)	0 (0)		0 (0)	

IQR: interquartile range; ULN: upper limit of normal.

Supplementary Table 2 Comparison of viral shedding time between groups of different AST level and disease types

	Number (%)	Viral shedding time (day, mean \pm SD)^a
AST<2\timesULN & asymptomatic cases	42 (6.4)	9.26 \pm 3.16
AST<2\timesULN & mild cases	605 (92.1)	10.59 \pm 2.71 ^b
AST\geq2\timesULN & mild cases	10 (1.5)	12.40 \pm 3.57 ^c

^a $P<0.01$; ^bAST<2 \times ULN & asymptomatic cases, $P<0.01$; ^cAST<2 \times ULN & asymptomatic cases, $P<0.01$, vs. AST<2 \times ULN & mild cases, $P<0.05$; ULN: Upper limit of normal; SD: Standard deviation.