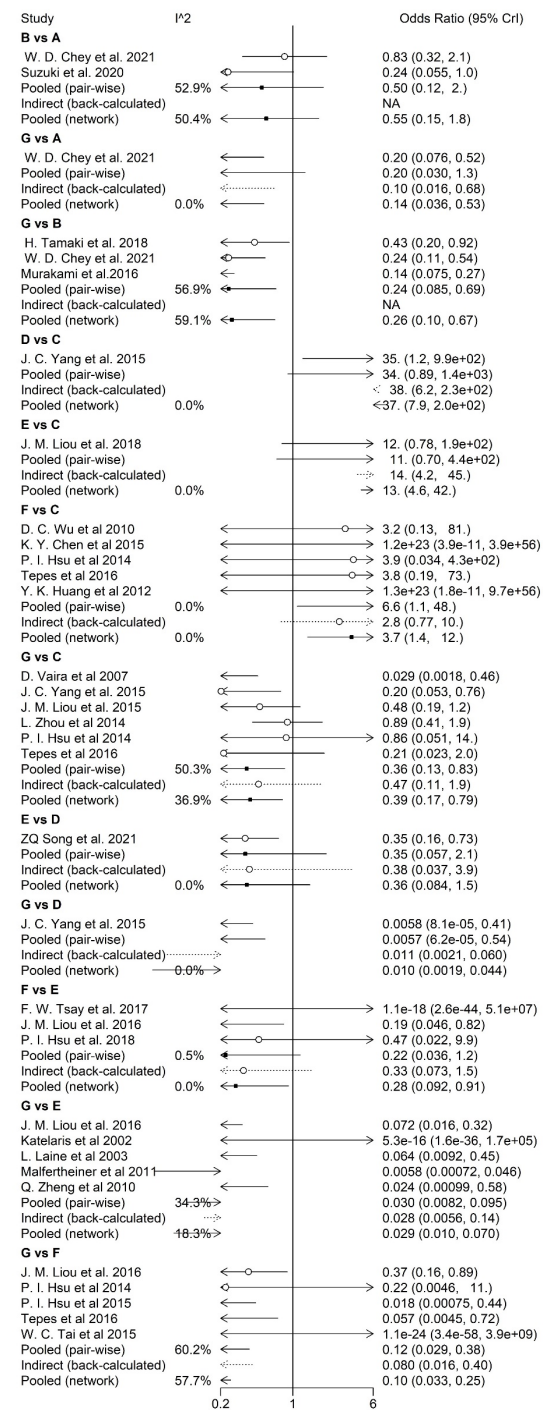


Supplementary Table 1. Study characteristics of the Randomized Controlled Trials in The Network Meta-Analysis.

Study ID	Country	Type of Article	Trial Number	Study Design	Study Site(s)	Study Period	Participants	Subgroup	Treatment	Duration	CLA-resistance
W. D. Chey et al. 2021	United States / Europe	Meeting Abstract	NCT04167670	RCT-3 arm	Multicentre (103)	201912-202103	1046	VPZ	A vs B vs G	14/14/14 d	201 (19.2)
Suzuki et al. 2020	Japan	Original Research	UMIN000034140	RCT-2 arm	Multicentre (7)	201810-201910	335	VPZ	A vs B	7/7 d	81 (24.2)
H. Tamaki et al. 2018	Japan	Meeting Abstract	None	RCT-2 arm	Multicentre	201506-201610	521	VPZ	B vs G	7/7 d	125 (23.6)
ZQ Song et al. 2020	China	Original Research	ChiCTR-IPR-	RCT-2 arm	Single	201710-201811	760	PPI	D vs E	14/14d	206 (27.1)
Soichiro et al. 2018	Japan	Original Research	UMIN000016337	RCT-2 arm	Multicentre (3)	201502-201610	147	VPZ	B vs G	7/7 d	41 (27.9)
J. M. Liou et al. 2018	Taiwan, China	Original Research	NCT03156855	RCT-2 arm	Multicentre (6)	201509-201707	620	PPI	C vs E	14/10d	46 (7.4)
P. I. Hsu et al. 2018	Taiwan, China	Original Research	NCT02547038	RCT-2 arm	Single	201508-201702	352	PPI	F vs E	14/14d	30 (8.5)
F. W. Tsay et al. 2017	Taiwan, China	Original Research	NCT02541864	RCT-2 arm	Single	201307-201506	330	PPI	E vs F	14/14d	12 (3.7)
Murakami et al.2016	Japan	Original Research	NCT01505127	RCT-2 arm	Multicentre (45)	201202-201306	650	VPZ	B vs G	7/7 d	215 (33.1)
J. M. Liou et al. 2016	Taiwan, China	Original Research	NCT01906879	RCT-3 arm	Multicentre (9)	201307-201604	1620	PPI	G vs F vs E	10/10/14d	160 (9.8)
Tepeš et al 2016	European	Original Research	Eudract 2012-	RCT-3 arm	Multicentre (6)	201101-201401	358	PPI	G vs C vs F	7/10/7 d	36 (10.1)
J. C. Yang et al. 2015	Taiwan, China	Original Research	NCT01163435	RCT-3 arm	Multicentre (4)	201008-201307	450	PPI	D vs G vs C	14/7/10 d	74 (16.4)
W. C. Tai et al 2015	Taiwan, China	Original Research	IRB-101-0674A3	RCT-2 arm	Single	201208-201403	200	PPI	F vs G	7/7 d	23 (11.5)
J. M. Liou et al. 2015	Taiwan, China	Original Research	NCT01607918	RCT-2 arm	Multicentre (8)	201202-201403	1300	PPI	C vs G	10/14 d	81 (6.2)
P. I. Hsu et al 2015	Taiwan, China	Original Research	NCT02359435	RCT-2 arm	Multicentre (3)	201210-201503	440	PPI	F vs G	12/12 d	18 (4.1)
K. Y. Chen et al 2015	Taiwan, China	Original Research	None	RCT-2 arm	Single	201303-201405	175	PPI	C vs E	10/14 d	17 (9.7)
P. I. Hsu et al 2014	Taiwan, China	Original Research	NCT01769365	RCT-3 arm	Single	201007-201310	307	PPI	G vs F vs C	7/7/10 d	17 (5.5)
L. Zhou et al 2014	China	Original Research	ACTRN12613000	RCT-2 arm	Multicentre (8)	200803-201012	280	PPI	C vs G	10/10 d	103 (3.7)
Y. K. Huang et al 2012	Taiwan, China	Original Research	None	RCT-2 arm	Single	200807-201002	169	PPI	C vs F	10/10 d	8 (4.7)
Malfertheiner et al	European	Original Research	NCT00669955	RCT-2 arm	Multicentre (39)	200806-200906	724	PPI	E vs G	10/7 d	58 (8.0)
Q. Zheng et al 2010	China	Original Research	None	RCT-2 arm	Single	200801-200901	170	PPI	G vs E	7/10 d	16 (9.4)
D. C. Wu et al 2010	Taiwan, China	Original Research	NCT00656968	RCT-2 arm	Multicentre (2)	200706-200805	232	PPI	C vs F	10/10 d	11 (4.7)
D. Vaira et al 2007	Italy	Original Research	NCT00403364	RCT-2 arm	Multicentre (2)	200309-200604	300	PPI	C vs G	10/10 d	30 (10.0)
L. Laine et al 2003	American	Original Research	None	RCT-2 arm	Multicentre (28)	Unclear	275	PPI	E vs G	10/10 d	27 (9.8)
Katellaris et al 2002	Australia/	Original Research	None	RCT-3 arm	Multicentre (17)	Unclear	268	PPI	E vs G	7/7 d	7 (2.6)

VPZ, vonoprazan; PPI, proton-pump inhibitor; A, Vonoprazan dual therapy (Vono-dual therapy); B, Vonoprazan triple therapy; C, Sequential therapy; D, HD-PPI-dual therapy; E, PPI-bismuth quadruple therapy; F, PPI-nonbismuth quadruple therapy; G, PPI-triple therapy; N (CLA-resistance), all number of patients infected with the CLA-resistance strain

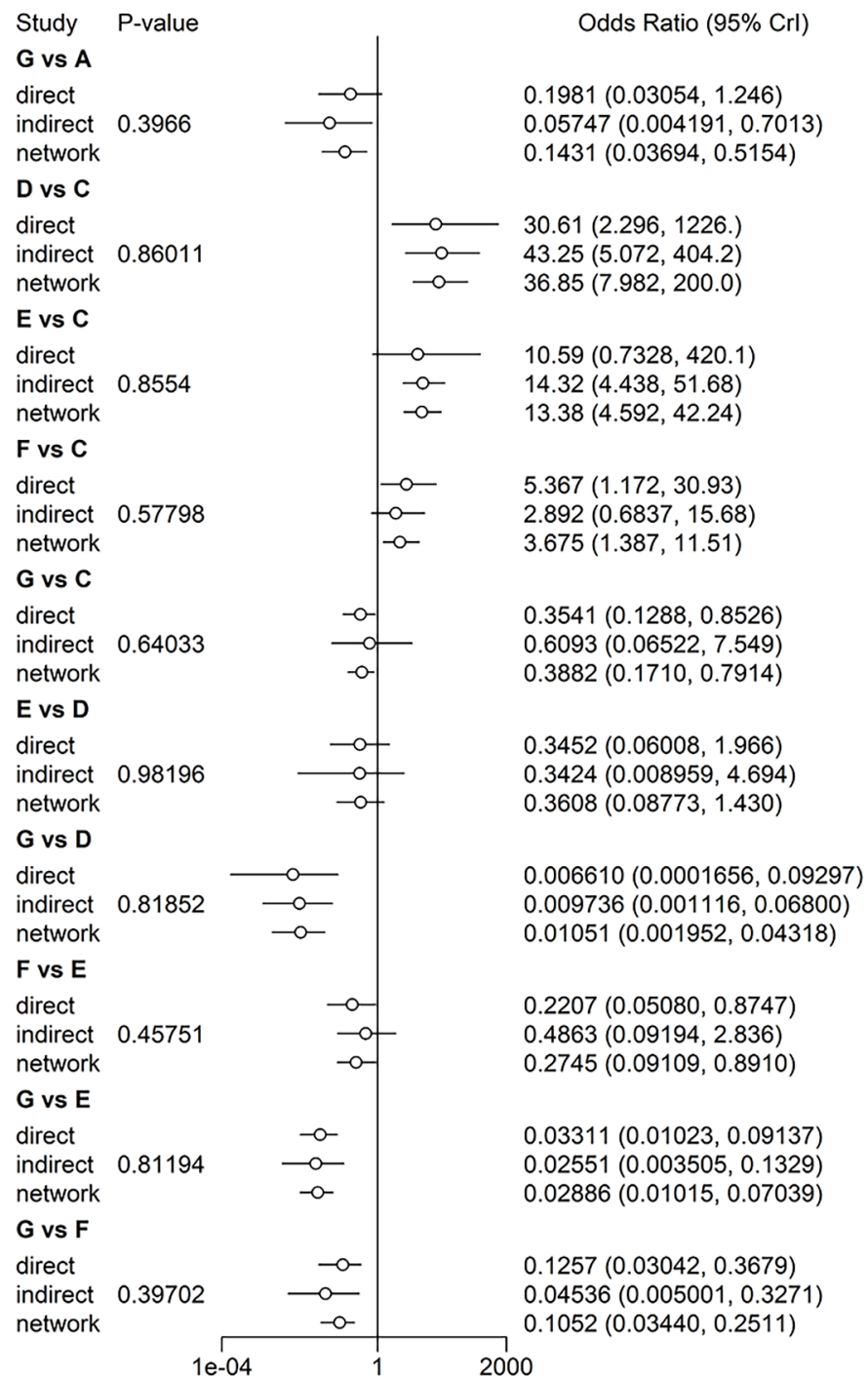
Supplementary figure 1



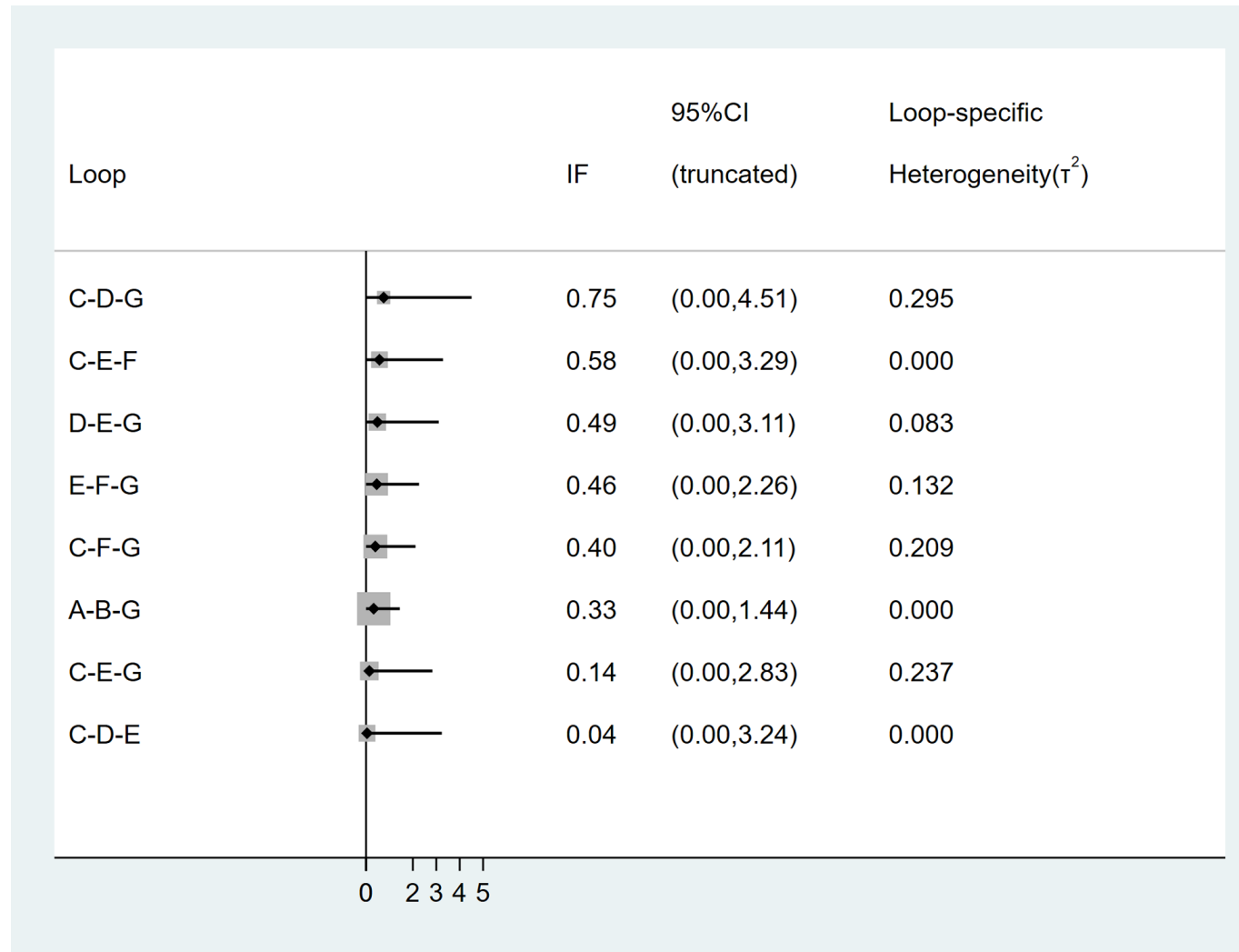
Supplementary figure 2

Vono-dual therapy						
1.80 (0.56, 6.47)	Vono-triple therapy					
2.69 (0.56, 12.42)	1.50 (0.41, 4.69)	Sequential therapy				
0.07 (0.01, 0.52)	0.04 (0.01, 0.22)	0.03 (0, 0.13)	HD-PPI-dual therapy			
0.20 (0.04, 1.00)	0.11 (0.03, 0.39)	0.08 (0.02, 0.22)	2.80 (0.69, 11.67)	PPI-bismuth QT		
0.73 (0.12, 3.32)	0.40 (0.09, 1.35)	0.27 (0.08, 0.72)	10.02 (1.74, 53.7)	3.56 (1.08, 10.83)	PPI-nonbismuth QT	
6.97 (1.90, 27.6)	3.89 (1.47, 9.69)	2.60 (1.26, 5.89)	96.80 (22.46, 521.85)	34.76 (14.11, 98.92)	9.73 (4.00, 29.94)	PPI-triple therapy

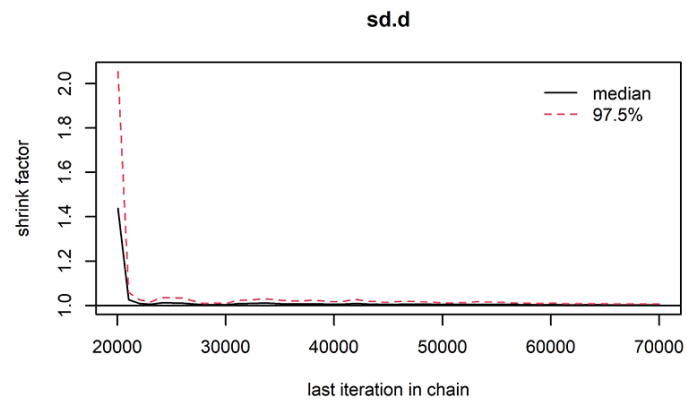
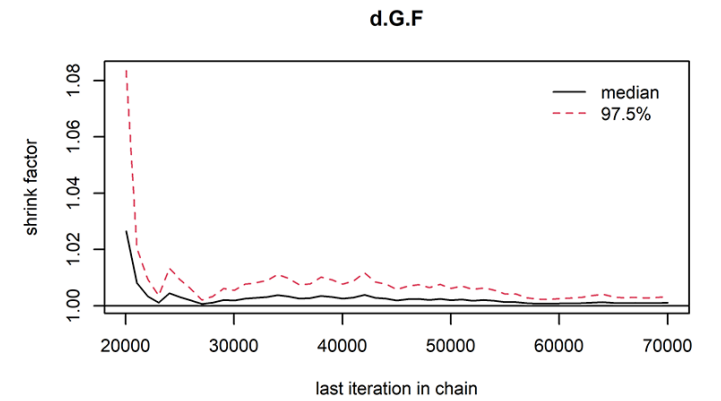
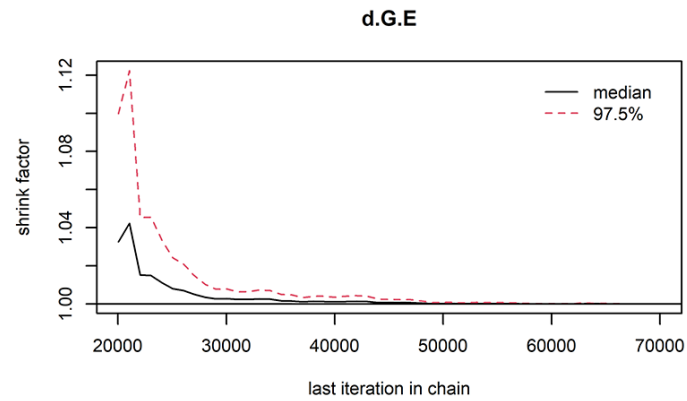
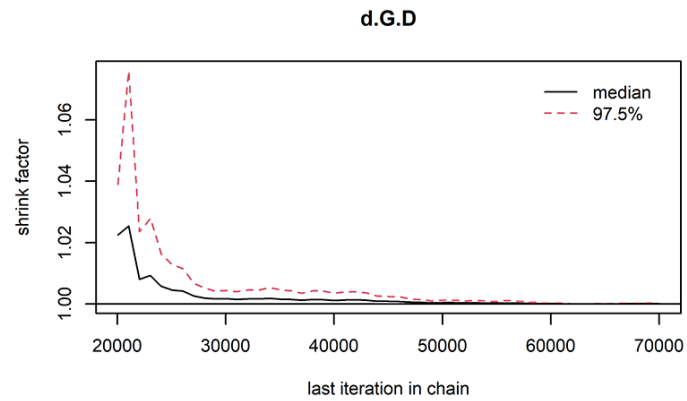
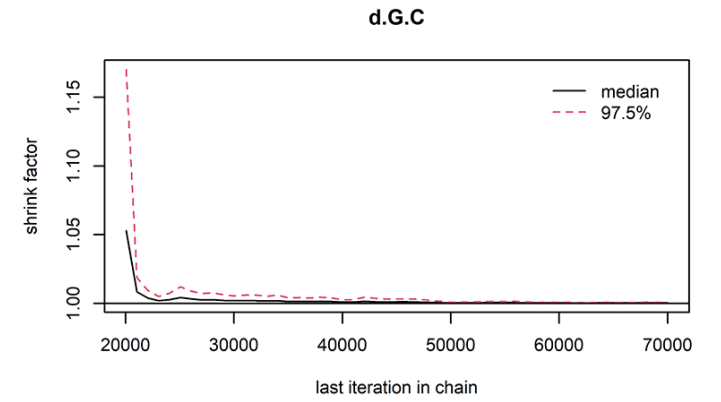
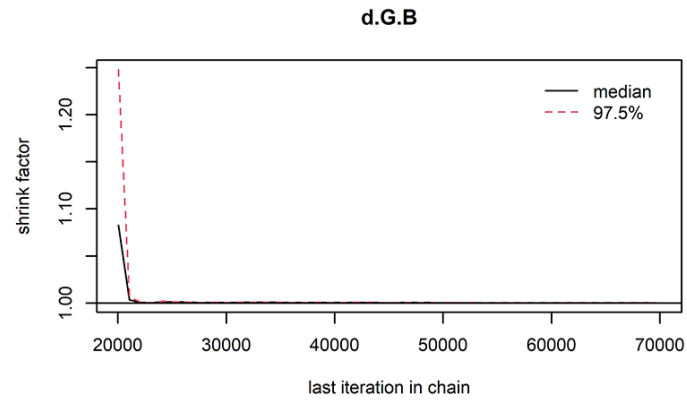
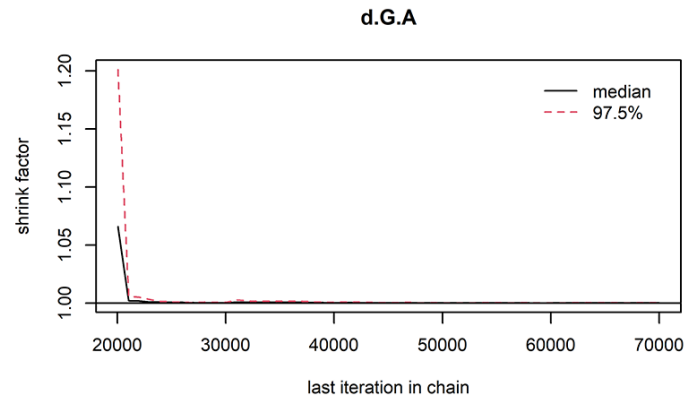
Supplementary figure 3



Supplementary figure 4



Supplementary figure 5



Supplementary figure 6

