

World Journal of *Gastroenterology*

World J Gastroenterol 2019 June 28; 25(24): 2973-3107



**OPINION REVIEW**

- 2973** Dietary Lectin exclusion: The next big food trend?
Panacer K, Whorwell PJ

REVIEW

- 2977** Immunotherapy for hepatocellular carcinoma: Current and future
Johnston MP, Khakoo SI
- 2990** Application of Big Data analysis in gastrointestinal research
Cheung KS, Leung WK, Seto WK

MINIREVIEWS

- 3009** Biomarkers and subtypes of deranged lipid metabolism in non-alcoholic fatty liver disease
Mato JM, Alonso C, Nouredin M, Lu SC
- 3021** Imaging biomarkers for the treatment of esophageal cancer
Hayano K, Ohira G, Hirata A, Aoyagi T, Imanishi S, Tochigi T, Hanaoka T, Shuto K, Matsubara H

ORIGINAL ARTICLE**Basic Study**

- 3030** Development and *in vitro* study of a bi-specific magnetic resonance imaging molecular probe for hepatocellular carcinoma
Ma XH, Wang S, Liu SY, Chen K, Wu ZY, Li DF, Mi YT, Hu LB, Chen ZW, Zhao XM
- 3044** Effect of NLRC5 on activation and reversion of hepatic stellate cells by regulating the nuclear factor- κ B signaling pathway
Zhang YZ, Yao JN, Zhang LF, Wang CF, Zhang XX, Gao B
- 3056** Freeze-dried Si-Ni-San powder can ameliorate high fat diet-induced non-alcoholic fatty liver disease
Zhu F, Li YM, Feng TT, Wu Y, Zhang HX, Jin GY, Liu JP

Retrospective Study

- 3069** Clinical characteristics of young patients with early Barrett's neoplasia
Iwaya Y, Shimamura Y, Goda K, Rodríguez de Santiago E, Coneys JG, Mosko JD, Kandel G, Kortan P, May G, Marcon N, Teshima C

Observational Study

- 3079** Evaluation of clinical outcomes in an interdisciplinary abdominal pain clinic: A retrospective, exploratory review
Deacy AD, Friesen CA, Staggs VS, Schurman JV

SYSTEMATIC REVIEWS

- 3091** Recent advances in endoscopic retrograde cholangiopancreatography in Billroth II gastrectomy patients: A systematic review
Park TY, Song TJ

ABOUT COVER

Editorial board member of *World Journal of Gastroenterology*, Vicente Lorenzo-Zúñiga, MD, PhD, Associate Professor, Chief Doctor, Senior Scientist, Staff Physician, Endoscopy Unit, Department of Gastroenterology, Hospital Universitari Germans Trias i Pujol/CIBERehd, Badalona 08916, Spain

AIMS AND SCOPE

World Journal of Gastroenterology (*World J Gastroenterol*, *WJG*, print ISSN 1007-9327, online ISSN 2219-2840, DOI: 10.3748) is a peer-reviewed open access journal. The *WJG* Editorial Board consists of 701 experts in gastroenterology and hepatology from 58 countries.

The primary task of *WJG* is to rapidly publish high-quality original articles, reviews, and commentaries in the fields of gastroenterology, hepatology, gastrointestinal endoscopy, gastrointestinal surgery, hepatobiliary surgery, gastrointestinal oncology, gastrointestinal radiation oncology, etc. The *WJG* is dedicated to become an influential and prestigious journal in gastroenterology and hepatology, to promote the development of above disciplines, and to improve the diagnostic and therapeutic skill and expertise of clinicians.

INDEXING/ABSTRACTING

The *WJG* is now indexed in Current Contents®/Clinical Medicine, Science Citation Index Expanded (also known as SciSearch®), Journal Citation Reports®, Index Medicus, MEDLINE, PubMed, PubMed Central, and Scopus. The 2019 edition of Journal Citation Report® cites the 2018 impact factor for *WJG* as 3.411 (5-year impact factor: 3.579), ranking *WJG* as 35th among 84 journals in gastroenterology and hepatology (quartile in category Q2). CiteScore (2018): 3.43.

RESPONSIBLE EDITORS FOR THIS ISSUE

Responsible Electronic Editor: Yan-Liang Zhang

Proofing Production Department Director: Yun-Xiaojian Wu

NAME OF JOURNAL

World Journal of Gastroenterology

ISSN

ISSN 1007-9327 (print) ISSN 2219-2840 (online)

LAUNCH DATE

October 1, 1995

FREQUENCY

Weekly

EDITORS-IN-CHIEF

Subrata Ghosh, Andrzej S. Tarnawski

EDITORIAL BOARD MEMBERS

<http://www.wjgnet.com/1007-9327/editorialboard.htm>

EDITORIAL OFFICE

Ze-Mao Gong, Director

PUBLICATION DATE

June 28, 2019

COPYRIGHT

© 2019 Baishideng Publishing Group Inc

INSTRUCTIONS TO AUTHORS

<https://www.wjgnet.com/bpg/gerinfo/204>

GUIDELINES FOR ETHICS DOCUMENTS

<https://www.wjgnet.com/bpg/GerInfo/287>

GUIDELINES FOR NON-NATIVE SPEAKERS OF ENGLISH

<https://www.wjgnet.com/bpg/gerinfo/240>

PUBLICATION MISCONDUCT

<https://www.wjgnet.com/bpg/gerinfo/208>

ARTICLE PROCESSING CHARGE

<https://www.wjgnet.com/bpg/gerinfo/242>

STEPS FOR SUBMITTING MANUSCRIPTS

<https://www.wjgnet.com/bpg/GerInfo/239>

ONLINE SUBMISSION

<https://www.f6publishing.com>



Basic Study

Freeze-dried Si-Ni-San powder can ameliorate high fat diet-induced non-alcoholic fatty liver disease

Feng Zhu, Yong-Min Li, Ting-Ting Feng, Yue Wu, Hai-Xia Zhang, Guo-Yin Jin, Jian-Ping Liu

ORCID number: Feng Zhu (0000-0002-4582-0550); Yong-Min Li (0000-0002-1199-9011); Ting-Ting Feng (0000-0002-5283-0482); Yue Wu (0000-0002-0243-5935); Hai-Xia Zhang (0000-0001-8443-2633); Guo-Yin Jin (0000-0001-9281-8333); Jian-Ping Liu (0000-0003-4445-1287).

Author contributions: Li YM designed the research; Zhu F, Feng TT, Wu Y and Jin GY performed the research; Liu JP analyzed and interpreted the data; Liu JP and Zhang HX wrote the paper.

Institutional animal care and use committee statement: All procedures involving animals were reviewed and approved by the animal ethics committee of Hebei North University, Zhangjiakou, China (No.2016-1-0-06).

Conflict-of-interest statement: The authors declare that there is no conflict of interest related to this study.

Data sharing statement: Raw sequencing data are available from the corresponding author. Participants gave informed consent for data sharing.

ARRIVE guidelines statement: The authors have read the ARRIVE guidelines, and the manuscript was prepared and revised according to the ARRIVE guidelines.

Open-Access: This article is an open-access article that was selected by an in-house editor and fully peer-reviewed by external reviewers. It is distributed in accordance with the Creative

Feng Zhu, Yong-Min Li, Ting-Ting Feng, Yue Wu, Hai-Xia Zhang, Guo-Yin Jin, Department of Traditional Chinese Medicine, Hebei North University, Zhangjiakou 075000, Hebei Province, China

Jian-Ping Liu, Department of Gastroenterology, People's Hospital of Changshou District, Chongqing 401220, China

Corresponding author: Yong-Min Li, MD, PhD, Full Professor, Department of Traditional Chinese Medicine, Hebei North University, No. 11, Diamond South Road, Zhangjiakou 075000, Hebei Province, China. zyxylm@hebeinu.edu.cn

Telephone: +86-313-4029228

Fax: +86-313-4029228

Abstract

BACKGROUND

Non-alcoholic fatty liver disease (NAFLD) is a common chronic liver disease worldwide. However, to date, there is no ideal therapy for this disease.

AIM

To study the effects of Si-Ni-San freeze-dried powder on high fat diet-induced NAFLD in mice.

METHODS

Twenty-four male C57BL/6 mice were randomized into three groups of eight. The control group (CON) was allowed *ad libitum* access to a normal chow diet. The high fat diet group (FAT) and Si-Ni-San group (SNS) were allowed *ad libitum* access to a high fat diet. The SNS group was intragastrically administered Si-Ni-San freeze-dried powder (5.0 g/kg) once daily, and the CON and FAT groups were intragastrically administered distilled water. After 12 wk, body weight, liver index, visceral fat index, serum alanine aminotransferase (ALT), portal lipopolysaccharide (LPS), liver tumor necrosis factor (TNF)- α and liver triglycerides were measured. Intestinal microbiota were analyzed using a 16S rDNA sequencing technique.

RESULTS

Compared with the FAT group, the SNS group exhibited decreased body weight, liver index, visceral fat index, serum ALT, portal LPS, liver TNF- α and liver triglycerides ($P < 0.05$). Intestinal microbiota analysis showed that the SNS group had different bacterial composition and function compared with the FAT group. In particular, *Oscillospira* genus was a bacterial biomarker of SNS group samples.

Commons Attribution Non Commercial (CC BY-NC 4.0) license, which permits others to distribute, remix, adapt, build upon this work non-commercially, and license their derivative works on different terms, provided the original work is properly cited and the use is non-commercial. See: <http://creativecommons.org/licenses/by-nc/4.0/>

Manuscript source: Unsolicited manuscript

Received: February 21, 2019

Peer-review started: February 22, 2019

First decision: February 26, 2019

Revised: May 28, 2019

Accepted: May 31, 2019

Article in press: June 1, 2019

Published online: June 28, 2019

P-Reviewer: Musumeci G, Tarantino G

S-Editor: Ma RY

L-Editor: Filipodia

E-Editor: Zhang YL



CONCLUSION

The beneficial effects of Si-Ni-San freeze-dried powder on high fat diet-induced NAFLD in mice may be associated with its anti-inflammatory and changing intestinal microbiota effects.

Key words: Nonalcoholic fatty liver disease; Si-Ni-San; High fat diet; Intestinal microbiota; Inflammation

©The Author(s) 2019. Published by Baishideng Publishing Group Inc. All rights reserved.

Core tip: We studied the effects of Si-Ni-San freeze-dried powder on high fat diet-induced nonalcoholic fatty liver disease (NAFLD) in mice. We found that Si-Ni-San freeze-dried powder ameliorated high fat diet-induced NAFLD in mice, and the mechanism of action of Si-Ni-San freeze-dried powder against NAFLD may be associated with its anti-inflammatory and changing intestinal microbiota effects. Our findings provide some useful information for therapy of NAFLD.

Citation: Zhu F, Li YM, Feng TT, Wu Y, Zhang HX, Jin GY, Liu JP. Freeze-dried Si-Ni-San powder can ameliorate high fat diet-induced non-alcoholic fatty liver disease. *World J Gastroenterol* 2019; 25(24): 3056-3068

URL: <https://www.wjgnet.com/1007-9327/full/v25/i24/3056.htm>

DOI: <https://dx.doi.org/10.3748/wjg.v25.i24.3056>

INTRODUCTION

Nonalcoholic fatty liver disease (NAFLD) is a condition of excess fat accumulation in the liver without significant alcohol consumption, and it consists of liver damage, ranging from steatosis to steatohepatitis, advanced fibrosis and cirrhosis. Obesity, hypertriglyceridemia, hyperglycemia, and type 2 diabetes are the best-known risk factors for NAFLD^[1,2]. Besides these risk factors, plus-size clothing and sleep shortage may also be associated with NAFLD^[3].

Over recent decades, we have witnessed a markedly increasing incidence of NAFLD, and it has become one of the most common chronic liver diseases worldwide^[4,5]. In the United States, the proportion of patients with this chronic liver diseases rose from 47%-75%^[6]. With the prevalent use of hepatitis vaccine and unchanged lifestyle, we can foresee that this proportion will continue to rise in the future. Nonalcoholic steatohepatitis (NASH), a more severe form of NAFLD, can lead to cirrhosis, liver failure, hepatocellular carcinoma and liver-related death^[7-9]. In addition, NAFLD is a risk factor for cardiovascular diseases, diabetes and chronic kidney disease, and it also causes a high level of non-liver-related mortality^[10,11]. Although NAFLD poses a threat to human health, the exact pathogenesis of this disease remains unclear. Moreover, until now, there are no approved medications for NAFLD treatment. Despite guidelines^[12,13] recommending lifestyle modification as the first line treatment for NAFLD, compliance is a challenge. Therefore, it is important to look for new drug therapies.

Si-Ni-San, first recorded by Zhong-Jing Zhang during the Eastern Han Dynasty, is a famous prescription of traditional Chinese medicine to coordinate the functions of liver and spleen, and it has been used in China for thousands of years. This prescription consists of four herbal medicines: Bupleuri Radix, Paeoniae Alba Radix, Aurantii Immaturus Fructus, and Honey-fried Licorice Root in equal proportions. Si-Ni-San can alleviate liver injury through protecting hepatocyte membranes, increasing NO release and facilitating apoptosis of liver-infiltrating cells^[14], and modified Si-Ni-San also has hepatoprotective effects^[15]. Moreover, glycyrrhizin^[16] and paeoniflorin^[17], two components of Si-Ni-San, have shown beneficial effects on NAFLD. Therefore, we hypothesize that Si-Ni-San may have some beneficial effects against NAFLD.

The human intestine harbors 10-100 trillion microorganisms, mainly bacteria, collectively referred to as the intestinal microbiota^[18,19]. The intestinal microbiota carries 150-fold more genes than the human genome, and these vast number of genes endow our body with special functions that we have not acquired during evolution, such as digesting plant polysaccharides^[20,21]. Although the homeostasis of the

intestinal microbiota is important for human health, dysbiosis of intestinal microbiota may cause disease. Previous studies have demonstrated that intestinal microbiota play a crucial role in the development of NAFLD^[22-24], and patients with NAFLD have a different intestinal microbiota composition compared with healthy controls^[25]. After oral administration, herbal medicines are exposed to the intestinal microbiota, and interactions are inevitable. Emerging studies have found that some herbal medicines can change the composition of the intestinal microbiota, which is viewed as an underlying therapeutic mechanism of herbal medicines^[26,27]. In contrast, for other herbal medicines, such as berberine^[28] and hesperidin^[29], the intestinal microbiota play a critical role in mediating their therapeutic effects.

The purpose of the present study was to preliminarily investigate the therapeutic effect of Si-Ni-San freeze-dried powder on high fat diet-induced NAFLD in a mouse model, and its effect on the composition and function of the intestinal microbiota, which will provide us with a deeper understanding of the therapeutic mechanism of Si-Ni-San freeze-dried powder.

MATERIALS AND METHODS

Preparation of Si-Ni-San freeze-dried powder

Bupleuri Radix, Paeoniae Alba Radix, Aurantii Immaturus Fructus, and Honey-fried Licorice Root were purchased from Beijing Tongrentang (Beijing, China) and were authenticated by our team. The herbs were mixed at a mass ratio of 1:1:1:1, and the mixture (2000 g) was decocted with distilled water and then filtered. The filtrate was prepared by freeze-drying, and five major constituents in the freeze-dried powder were quantified by HPLC (Table 1).

Animals, diets, and treatments

Twenty-four male 5-wk-old C57BL/6 mice (Beijing Vital River Laboratory Animal Technology Co. Ltd., Beijing, China) were acclimated for 1 wk at a temperature of 20–22 °C and humidity of 40%–45% in controlled rooms with an alternating 12-h light and dark cycle. After acclimation, mice were randomized into three groups of eight. The control group (CON) was allowed *ad libitum* access to a normal chow diet for 12 wk. The high fat diet group (FAT) and Si-Ni-San group (SNS) were allowed *ad libitum* access to a high fat diet for 12 wk. The composition of normal chow diet and high fat diet are shown in Table 2. SNS group mice were intragastrically administered Si-Ni-San freeze-dried powder (5.0 g/kg) once daily. The CON and FAT groups were intragastrically administered distilled water once daily. The study was approved by the Animal Ethics Committee of Hebei North University (No. 2016-1-0-06).

Liver index and visceral fat index assays

After 12 wk treatment, all mice were anesthetized with ketamine (80 mg/kg) and xylazine (6 mg/kg). The liver, mesenteric fat, retroperitoneal fat and epididymal fat were isolated and weighed. Liver index was calculated as the ratio of liver to body weight. The visceral fat index was calculated as the ratio of visceral fat (mesenteric, retroperitoneal and epididymal fat) to body weight.

Hepatic lipid measurement

Liver lipid was extracted as previously described^[30], and liver triglycerides were measured using a Triglyceride Reagent Kit (Dongou, Wenzhou, China). Frozen sections stained with Oil Red O were also used for hepatic lipid detection.

Biochemical assays

When the mice were killed, blood samples were collected *via* cardiac puncture and centrifuged. Serum alanine aminotransferase (ALT) was measured by standard procedures. One milliliter of portal blood was collected for analysis by lipopolysaccharide (LPS) assay. The level of portal LPS was measured using a chromogenic limulus amoebocyte lysate test kit (Bokang, Zhanjiang, China) according to the manufacturer's instructions.

Liver TNF-α

Portions of liver tissues were homogenized (100 mg/mL) in RIPA lysis buffer (Beyotime, Shanghai, China). Liver TNF-α was measured using Mouse TNF-α Quantikine ELISA Kit (R&D Systems, Minneapolis, MN, United States).

Intestinal microbiota analysis

One week before the mice were killed, fecal samples were collected and stored at -80 °C. The total fecal DNA was extracted using QIAamp Fast DNA Stool Mini Kit

Table 1 Five major constituents in Si-Ni-San freeze-dried powder

Compound	Saikoside A	Paeoniloricin	Naringin	Hesperidin	Licorice acid
Contents ¹ In mg/g	89.5 ± 0.02	458.2 ± 0.03	143.4 ± 0.03	138.3 ± 0.02	140.3 ± 0.01

¹Data expressed as mean ± SD (*n* = 5).

(QIAGEN, Valencia, CA, United States). V4 hypervariable region of 16S rRNA genes was amplified using specific primers (515F: 5'-GTGCCAGCMGCCGCGGTAA-3', 806R: 5'-GGACTACHVGGGTWTCTAAT-3'). PCR products were mixed in equidensity ratios. Sequencing libraries were prepared using the TruSeq DNA PCR-Free Sample Preparation Kit (Illumina, San Diego, CA, United States). The library was sequenced on an Illumina HiSeq2500 platform and paired-end reads were generated.

QIIME pipeline (1.9.1) was used to process and analyze the raw data^[31]. The main scripts used in our study were as follows: *join_paired_ends.py*, *split_libraries_fastq.py*, *pick_open_reference_otus.py* and *core_diversity_analyses.py*. Operational taxonomic units (OTUs) were clustered at 97% similarity, and sequences were taxonomically assigned against the Greengenes database (gg_13_8). The results of α diversity, β diversity and bacterial taxonomy were generated by *core_diversity_analyses.py* script. We used the linear discriminant analysis (LDA) effect size (LEfSe) method to identify bacterial biomarkers in different groups^[32]. We predicted the bacterial functions of different groups. For functional prediction, we reclustered sequences into OTUs (97% similarity) against the Greengenes database (gg_13_5) using *pick_closed_reference_otus.py* script, and then the PICRUSt pipeline^[33] was used to predict bacterial functions. After using the *norma-lize_by_copy_number.py* script, the *predict_metagenomes.py* script was used to generate Kyoto Encyclopedia of Genes and Genomes (KEGG) ortholog predictions. We also applied the LEfSe method to find functional biomarkers in different groups.

Statistical analysis

Data are presented as mean ± SD. The differences in data were statistically analyzed by one-way analysis of variance with Bonferroni's multiple-comparison test as *post hoc* analysis. SPSS version 20.0 was used for statistical analysis, and *P* < 0.05 was considered statistically significant.

RESULTS

Effects of Si-Ni-San freeze-dried powder on body weight, liver index and visceral fat index

At the beginning of the experiment, the body weight of the three groups of mice did not differ significantly (data not shown). After 12 wk, the FAT and SNS groups exhibited higher body weight, liver index and visceral fat index compared with the CON group (Figure 1A-C, *P* < 0.05, respectively). However, the SNS group, compared with the FAT group, showed decreased body weight, liver index and visceral fat index (Figure 1A-C, *P* < 0.05, respectively).

Si-Ni-San freeze-dried powder ameliorates high fat diet-induced inflammation and liver injury

After 12 wk of eating the high fat diet, the FAT group had significantly increased levels of portal LPS, liver TNF- α and ALT compared with the CON group (Figure 2A-C, *P* < 0.05, respectively). However, compared with the FAT group, the SNS group, which was intragastrically administered Si-Ni-San freeze-dried powder every day for 12 wk, significantly decreased levels of portal LPS, liver TNF- α and ALT (Figure 2A-C, *P* < 0.05, respectively). Compared with the CON group, the SNS group only exhibited higher levels of liver TNF- α and ALT (Figure 2B and C, *P* < 0.05, respectively).

Si-Ni-San freeze-dried powder reduces high fat diet-induced triglyceride accumulation in the liver

Oil Red O staining was used to morphologically observe triglyceride accumulation in the livers of mice. The CON group nearly had no triglyceride accumulation in the liver; however, the FAT group had obvious triglyceride accumulation (Figure 3A). The SNS group exhibited less triglyceride accumulation compared with the FAT group (Figure 3A). Triglyceride accumulation was measured using a colorimetric

Table 2 Composition of diets

	Normal chow diet in g/kg	High fat diet in g/kg
Casein	212.33	261.02
L-Cystine	2.84	3.50
Corn starch	275.84	56.87
Maltodextrin	33.18	116.53
Sucrose	331.77	201.36
Cellulose	47.40	58.26
Soybean oil	23.70	29.13
Lard	18.96	206.84
Mineral mix	9.84	11.65
Dicalcium phosphate	12.32	15.15
Calcium carbonate	5.21	6.41
Potassium citrate	15.64	19.23
Vitamin mix	9.48	11.56
Choline bitartrate	1.90	2.33
FD&C dye	0.047	0.058

method, and the results were consistent with the findings of Oil Red O staining. The levels of triglycerides were significantly increased in the liver of the FAT and SNS groups compared with the CON group (Figure 3B, $P < 0.05$). Si-Ni-San freeze-dried powder significantly decreased the levels of triglycerides in the SNS group compared with the FAT group (Figure 3B, $P < 0.05$).

Intestinal microbiota composition in different group samples

A total of 1,380,651 high-quality reads (average of $57,527 \pm 14,266$ sequences per sample) were used for biological information analysis, and 15,253 OTUs were clustered at 97% similarity (Figure 4A). Good coverage, which was > 0.96 , and the rarefaction curves of all samples indicated that we obtained sufficient OTUs to reflect the bacterial composition of different samples accurately (Figure 4B). Although we calculated the values of Shannon Index and Chao 1, the three groups of mice showed no significant differences (data not shown). To observe the β diversity of different groups of mice, we used Unweighted UniFrac PCoA, and the result of this evolutionary distance-based method showed that the intestinal microbiota of the CON group was obviously separated from that of the FAT and SNS groups (Figure 4C). Despite partially overlapping, the intestinal microbiota of the FAT and SNS groups were roughly separated (Figure 4C). Analysis of molecular variance was used to further assess the spatial separation, and revealed that samples from the three groups differed significantly (CON *vs* FAT group, $P < 0.001$; FAT *vs* SNS group, $P < 0.001$; CON *vs* SNS group, $P < 0.001$).

At the phylum level, 27 bacterial phyla were identified, and the top five were Firmicutes, Bacteroidetes, Proteobacteria, Deferribacteres and Actinobacteria. The phyla of BRC1, Chlamydiae, Chlorobi, Fibrobacteres, GN04 and OP3 were only found in the CON and SNS groups. Moreover, the bacterial phyla of Synergistetes and TM6 were only found in the SNS group. The FAT group samples increased the ratio of Firmicutes to Bacteroidetes compared with the CON group samples; however, this ratio in the SNS group samples did not differ significantly compared with the CON and FAT group samples. At the genus level, 227 genera were identified. To find taxon differences, we used the LEfSe method and showed that S24-7 (family level), Bacteroidales (order level), Bacteroidia (class level), Bacteroidetes (phylum level), *Mucispirillum* (genus level), Deferribacteraceae (family level), Deferribacterales (order level), Deferribacteres (class level), Deferribacteres (phylum level), Erysipelotrichaceae (family level), Erysipelotrichales (order level), Erysipelotrichi (class level), Desulfovibrionaceae (family level), Desulfovibrionales (order level), Delta-proteobacteria (class level), and Proteobacteria (phylum level) were biomarkers in the CON group samples (Figure 5A and B). *Lactobacillus* (genus level), Lactobacillaceae (family level), *Lactococcus* (genus level), Streptococcaceae (family level), Lactobacillales (order level), Bacilli (class level), and Firmicutes (phylum level) were biomarkers in the FAT group samples (Figure 5A and B). *Oscillospira* (genus level), Ruminococcaceae (family level), Clostridiales (order level), and Clostridia (class level) were biomarkers in the SNS group samples (Figure 5A and B).

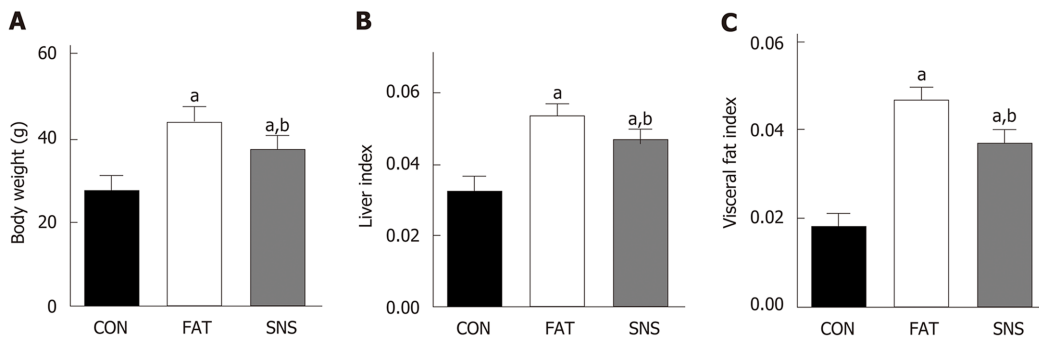


Figure 1 Effects of Si-Ni-San freeze-dried powder on body weight, liver index and visceral fat index. A: Body weight at 12 wk; B: Liver index (liver weight/body weight); C: Visceral fat index (visceral fat weight/body weight). ^a $P < 0.05$ vs CON group mice, ^b $P < 0.05$ vs FAT group mice.

Intestinal microbiota functions in different group samples

We used PICRUST to predict the functions of bacterial microbiota using KEGG database at level 3, and then the LEfSe method to find functional biomarkers in different group samples. LEfSe showed that metabolism, genetic information processing, glycan biosynthesis and metabolism, energy metabolism, translation, amino acid metabolism, and replication and repair were functional biomarkers of the CON group samples (Figure 6A and B). Transcription and carbohydrate metabolism were functional biomarkers of the SNS group samples (Figure 6A and B). Environmental information processing, transporters, ABC transporters and transcription factors were functional biomarkers of the FAT group samples (Figure 6A and B).

DISCUSSION

The present study preliminarily investigated the effects of Si-Ni-San freeze-dried powder on high fat diet-induced NAFLD in mice. We demonstrated that Si-Ni-San freeze-dried powder ameliorates high fat diet-induced high levels of body weight, liver index, visceral fat index, portal LPS, serum ALT, liver TNF- α and liver triglyceride accumulation in mice. We also found that Si-Ni-San freeze-dried powder can alter intestinal microbiota composition and function in mice.

Previous research has studied the effects of Si-Ni-San on NAFLD, and found that Si-Ni-San can reduce the liver concentration of total cholesterol, triglyceride, free fatty acid and interleukin (IL)-6 in rats with NAFLD^[34]. However, animal models of NAFLD, in this research, were induced using a long-term chronic stress method that is not widely used in NAFLD studies. In addition, this method caused a decrease in body weight compared with control rats, which does not match the real-life situation. In the present study, we adopted a high fat diet to induce animal models of NAFLD, which is a stable and widely used method in NAFLD studies. This method always induces obesity, insulin resistance, dyslipidemia and liver triglyceride accumulation, which more accurately reflect real-life situations. Thus, our present study has a wider practical significance.

NAFLD is always considered to be the hepatic manifestation of metabolic syndrome, and insulin resistance plays an important role in the pathogenesis of NAFLD^[35-37]. In the present study, although the level of insulin resistance in the SNS group exhibited a decreased trend compared with the FAT group, the difference was not significant (data not shown), suggesting that improving insulin resistance is not a mechanism of action of Si-Ni-San freeze-dried powder, or its improvement of insulin resistance is not due to small sample size. Thus, additional large-sample studies addressing the effect of Si-Ni-San freeze-dried powder on insulin resistance are warranted.

Previous studies have revealed the key role of LPS, a constituent of Gram-negative bacteria and main constituent of endotoxemia, in the development of metabolic diseases, and elevated LPS has been observed in patients with NAFLD^[25,38]. LPS is an inflammatory trigger, and it can promote the secretion of proinflammatory cytokines, such as tumor necrosis factor (TNF)- α , IL-1 and IL-6. In the present study, we found that high fat diet increased the levels of portal LPS and liver TNF- α compared with normal chow diet; however, Si-Ni-San freeze-dried powder reduced these increases,

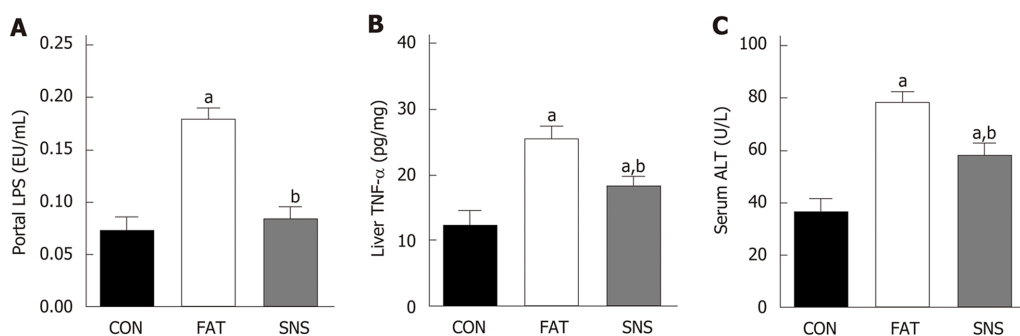


Figure 2 Si-Ni-San freeze-dried powder ameliorates liver inflammation and injury. A: Portal lipopolysaccharide; B: Liver tumor necrosis factor- α ; C: Serum alanine aminotransferase. ^a $P < 0.05$ vs CON group mice, ^b $P < 0.05$ vs FAT group mice. ALT: Alanine aminotransferase; LPS: Lipopolysaccharide; TNF- α : Tumor necrosis factor- α .

suggesting that the anti-inflammatory effect of Si-Ni-San freeze-dried powder may be a mechanism underlying its beneficial effect. Although the portal LPS of the CON and SNS groups did not differ significantly, the SNS group only exhibited higher levels of liver TNF- α and ALT, suggesting that in addition to LPS, there may be other proinflammatory factors.

The important role of intestinal microbiota in the pathogenesis of NAFLD has been revealed in previous studies^[22,39]. Given the tight links between intestinal microbiota and NAFLD, manipulation of the intestinal microbiota of NAFLD is a promising therapeutic strategy^[40-42]. Thus, in the present study, we investigated the effect of Si-Ni-San freeze-dried powder on intestinal microbiota, and found that the intestinal microbiota composition and function in the SNS group differed clearly from those in the FAT group, suggesting that Si-Ni-San freeze-dried powder alters high fat diet-induced intestinal microbiota dysbiosis. So, the therapeutic effect of Si-Ni-San freeze-dried powder on high fat diet-induced NAFLD may be achieved by changing the intestinal microbiota. The fact that the *Oscillospira* genus was a bacterial biomarker in the SNS group samples demands our further attention. Up to now, there has been little knowledge about this genus, mainly because it has never been cultured. Our former study found that *Oscillospira* is associated with a high protein diet, which has beneficial effects on NAFLD^[30]. Other studies have found that *Oscillospira* is significantly reduced in patients with NASH or inflammatory bowel disease^[43-45], and is positively associated with leanness^[46]. A recent study has found that some *Oscillospira* species may be able to utilize glycans to secrete butyrate^[47], which can prevent inflammation^[48], and plays an important role in metabolic diseases^[49-51]. Using a combination of our results with those of former studies, we infer that Si-Ni-San freeze-dried powder may achieve its beneficial effect by providing more special glycans to *Oscillospira* bacteria and then producing more butyrate, which has multiple beneficial effects on host health. The result that carbohydrate metabolism was a functional biomarker in the SNS group partly supports our inference, and further studies are warranted to confirm our hypothesis.

An interesting finding in our study was that *Lactobacillus* genus was a bacterial biomarker of the FAT group. Some strains of *Lactobacillus* are frequently used as probiotics^[52]. Thus, our finding needs confirmation by further studies.

There were several limitations to the present study. First, there was a lack of metabolomics analysis, so the effects of Si-Ni-San freeze-dried powder on the metabolism of intestinal microbiota are not known. Second, we did not administer Si-Ni-San freeze-dried powder to normal chow diet mice, so the effects of Si-Ni-San freeze-dried powder on normal chow diet mice are not known. Third, the sample size was small, so our results need further studies for confirmation. Fourth, the change in some cytokines, such as IL-1 and IL-6, was not detected in the present study. These limitations will be addressed in our future studies.

In conclusion, our present study preliminarily confirmed the beneficial effects of Si-Ni-San freeze-dried powder on high fat diet-induced NAFLD in mice, and that the mechanisms of action of Si-Ni-San freeze-dried powder against NAFLD may be associated with its anti-inflammatory effects and its changes to the intestinal microbiota. Our findings provide some useful information for NAFLD therapy. We provide the basis for the clinical use of Si-Ni-San freeze-dried powder and some underlying mechanisms of its action. Although more in-depth research is needed in the future, Si-Ni-San freeze-dried powder may also be a clinical option for NAFLD treatment.

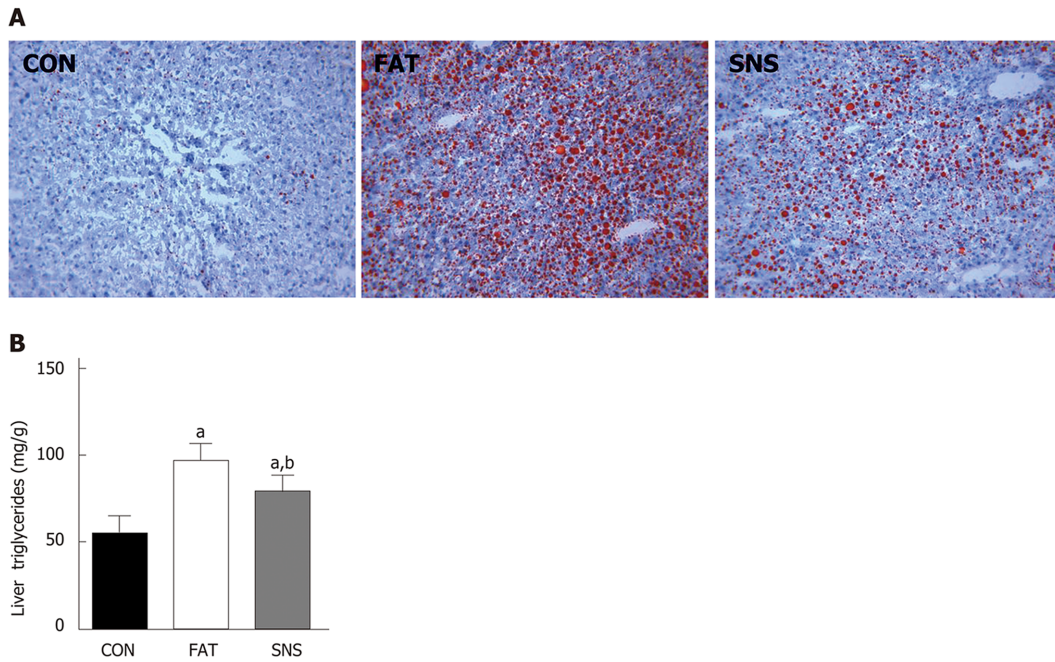


Figure 3 Si-Ni-San freeze-dried powder ameliorates high fat diet-induced hepatic triglyceride accumulation. A: Representative Oil Red O staining (magnification 200 ×); B: Liver triglycerides. ^a $P < 0.05$ vs CON group mice, ^b $P < 0.05$ vs FAT group mice.

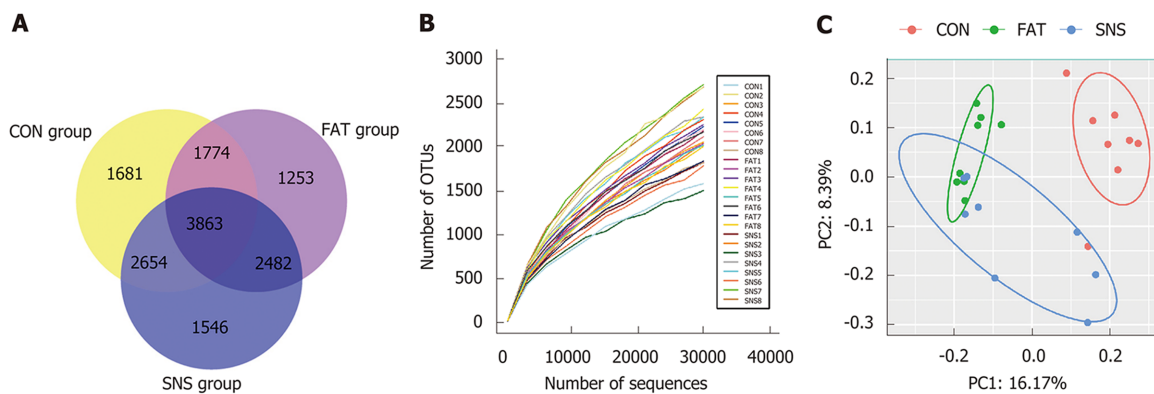


Figure 4 Intestinal microbiota composition in different group samples. A: Venn diagram of operational taxonomic units; B: Rarefaction curves; C: Unweighted Uni Frac PCo A. OTUs: Operational taxonomic units.

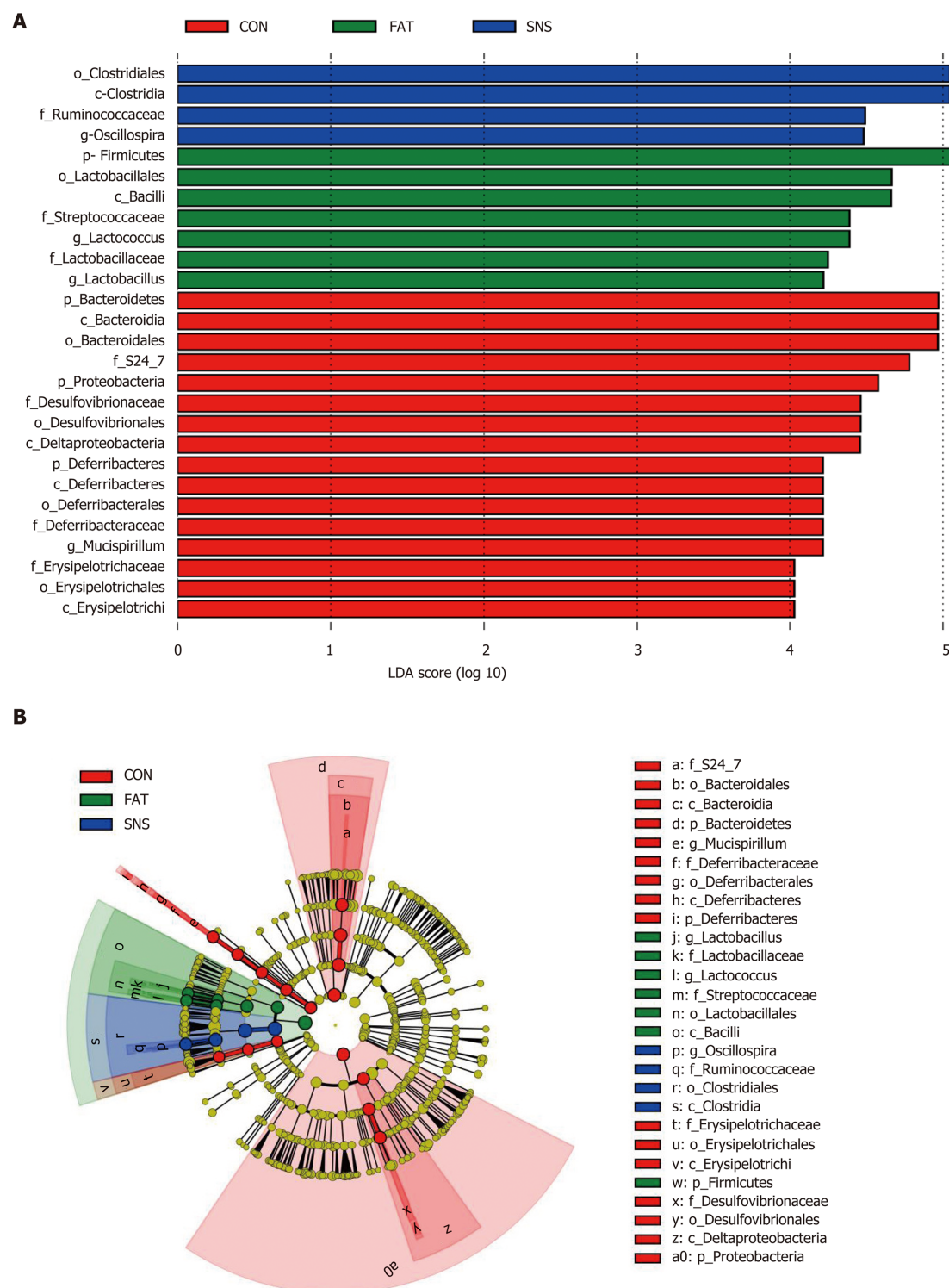


Figure 5 Bacterial biomarkers of different group samples. A: Bacterial biomarkers found by linear discriminant analysis effect size (LEfSe); B: Taxonomic cladogram obtained from LEfSe. Taxa meeting an linear discriminant analysis significant threshold > 4 are shown. c: class level; f: family level; g: genus level; o: order level; p: phylum level. LDA: Linear discriminant analysis.

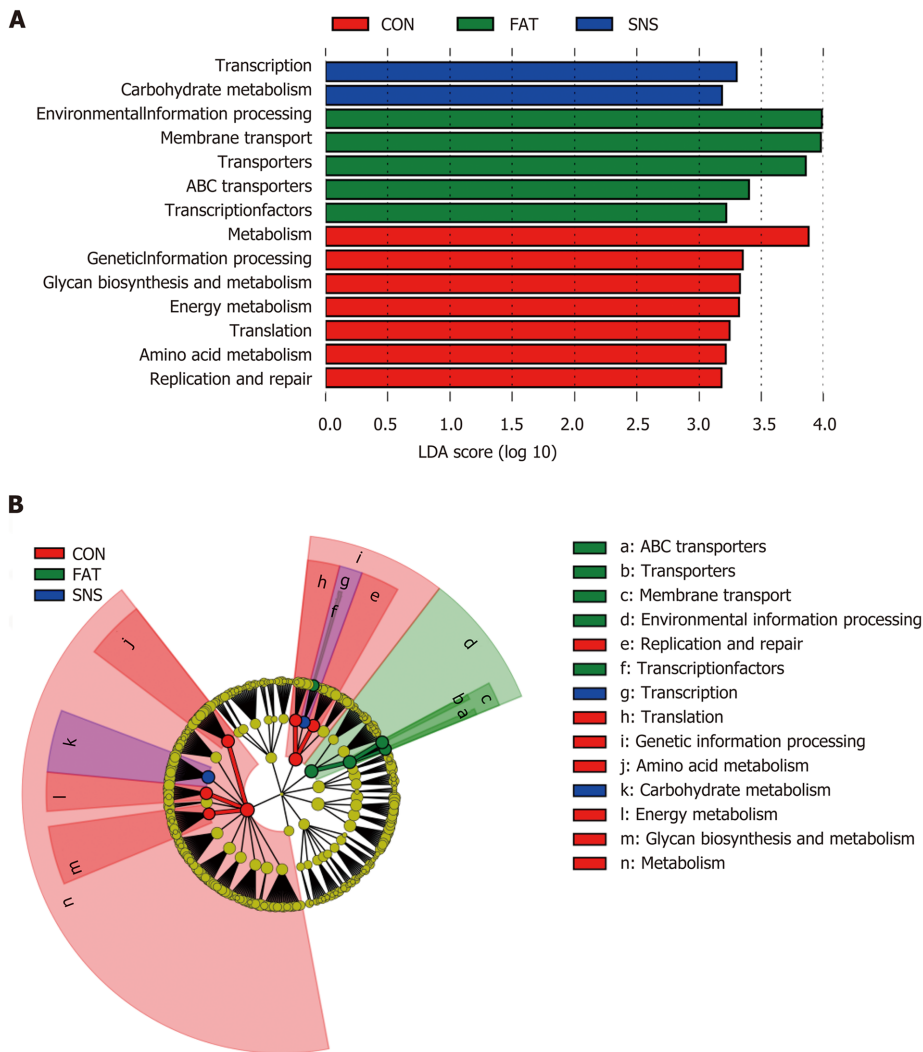


Figure 6 Intestinal microbiota functions in different group samples. A: Functional biomarkers found by linear discriminant analysis effect size (LEfSe); B: Functional cladogram obtained from LEfSe. Functions meeting an linear discriminant analysis significant threshold > 3.1 are shown. LDA: Linear discriminant analysis.

ARTICLE HIGHLIGHTS

Research background

The incidence of nonalcoholic fatty liver disease (NAFLD) dramatically increased in the last few decades. Unfortunately, until now, the clinical treatment of this common chronic liver disease is difficult, and some new effective therapies are needed.

Research motivation

Some herbal medicines have hepatoprotective effects, so we want to know if some famous prescriptions of traditional Chinese medicine can provide beneficial effects on NAFLD.

Research objectives

To explore the effects of Si-Ni-San, a famous prescription of traditional Chinese medicine, on NAFLD and intestinal microbiota.

Research methods

We intragastrically administered Si-Ni-San freeze-dried powder (5.0 g/kg) to mice, which were allowed ad libitum access to a high fat diet. After 12 wk of treatment, we measured body weight, liver index, visceral fat index, serum alanine aminotransferase (ALT), portal lipopolysaccharide (LPS), liver tumor necrosis factor (TNF)- α , liver triglycerides and intestinal microbiota, and we compared the results of these parameters with mice in another group to find whether Si-Ni-San freeze-dried powder have some beneficial effects on NAFLD.

Research results

After Si-Ni-San freeze-dried powder treatment, the levels of body weight, liver index, visceral fat

index, serum ALT, portal LPS, liver TNF- α and liver triglycerides were improved. The composition of intestinal microbiota was also changed, especially the *Oscillospira* genus.

Research conclusions

Si-Ni-San freeze-dried powder can ameliorate NAFLD by an anti-inflammatory action and intestinal microbiota-changing effect.

Research perspectives

Although we provide basis for the clinical use of Si-Ni-San freeze-dried powder and some underlying mechanisms of its action, the effects of Si-Ni-San freeze-dried powder on the metabolism of intestinal microbiota and some cytokines, such as interleukin (IL)-1 and IL-6, need to be addressed in future studies.

REFERENCES

- Angulo P. Nonalcoholic fatty liver disease. *N Engl J Med* 2002; **16**: 1221-1231 [PMID: 11961152 DOI: 10.1056/NEJMra011775]
- Clark JM, Brancati FL, Diehl AM. Nonalcoholic fatty liver disease. *Gastroenterology* 2002; **122**: 1649-1657 [PMID: 12016429]
- Trovato FM, Martinez GF, Brischetto D, Catalano D, Musumeci G, Trovato GM. Fatty liver disease and lifestyle in youngsters: diet, food intake frequency, exercise, sleep shortage and fashion. *Liver Int* 2016; **36**: 427-433 [PMID: 26346413 DOI: 10.1111/liv.12957]
- Ray K. NAFLD-the next global epidemic. *Nat Rev Gastroenterol Hepatol* 2013; **10**: 621 [PMID: 24185985 DOI: 10.1038/nrgastro.2013.197]
- Loomba R, Sanyal AJ. The global NAFLD epidemic. *Nat Rev Gastroenterol Hepatol* 2013; **10**: 686-690 [PMID: 24042449 DOI: 10.1038/nrgastro.2013.171]
- Younossi ZM, Stepanova M, Afendy M, Fang Y, Younossi Y, Mir H, Srishord M. Changes in the prevalence of the most common causes of chronic liver diseases in the United States from 1988 to 2008. *Clin Gastroenterol Hepatol* 2011; **9**: 524-530.e1; quiz e60 [PMID: 21440669 DOI: 10.1016/j.cgh.2011.03.020]
- Gariani K, Philippe J, Jornayvaz FR. Non-alcoholic fatty liver disease and insulin resistance: from bench to bedside. *Diabetes Metab* 2013; **39**: 16-26 [PMID: 23266468 DOI: 10.1016/j.diabet.2012.11.002]
- Neuschwander-Tetri BA, Caldwell SH. Nonalcoholic steatohepatitis: summary of an AASLD Single Topic Conference. *Hepatology* 2003; **37**: 1202-1219 [PMID: 12717402 DOI: 10.1053/jhep.2003.50193]
- Scalera A, Tarantino G. Could metabolic syndrome lead to hepatocarcinoma via non-alcoholic fatty liver disease? *World J Gastroenterol* 2014; **20**: 9217-9228 [PMID: 25071314 DOI: 10.3748/wjg.v20.i28.9217]
- Kwak MS, Kim D. Long-term outcomes of nonalcoholic fatty liver disease. *Curr Hepatol Rep* 2015; **14**: 69-76 [DOI: 10.1007/s11901-015-0258-6]
- Levene AP, Goldin RD. The epidemiology, pathogenesis and histopathology of fatty liver disease. *Histopathology* 2012; **61**: 141-152 [PMID: 22372457 DOI: 10.1111/j.1365-2559.2011.04145.x]
- Chalasani N, Younossi Z, Lavine JE, Charlton M, Cusi K, Rinella M, Harrison SA, Brunt EM, Sanyal AJ. The diagnosis and management of nonalcoholic fatty liver disease: Practice guidance from the American Association for the Study of Liver Diseases. *Hepatology* 2018; **67**: 328-357 [PMID: 28714183 DOI: 10.1002/hep.29367]
- European Association for the Study of the Liver; European Association for the Study of Diabetes (EASD); European Association for the Study of Obesity (EASO). EASL-EASD-EASO Clinical Practice Guidelines for the management of non-alcoholic fatty liver disease. *Diabetologia* 2016; **59**: 1121-1140 [PMID: 27053230 DOI: 10.1007/s00125-016-3902-y]
- Jiang J, Zhou C, Xu Q. Alleviating effects of si-ni-san, a traditional Chinese prescription, on experimental liver injury and its mechanisms. *Biol Pharm Bull* 2003; **26**: 1089-1094 [PMID: 12913256]
- Liu CG, Wang XL, Du XW, Jiang DY, Geng NZ, Zhang SX, Zhou YY, Kuang HX. Metabolomic profiling for identification of potential biomarkers in the protective effects of modified Sinisan against liver injury in dimethylnitrosamine treated rats. *Biol Pharm Bull* 2013; **36**: 1700-1707 [PMID: 24189414]
- Wu X, Zhang L, Gurley E, Studer E, Shang J, Wang T, Wang C, Yan M, Jiang Z, Hylemon PB, Sanyal AJ, Pandak WM, Zhou H. Prevention of free fatty acid-induced hepatic lipotoxicity by 18 β -glycyrrhetic acid through lysosomal and mitochondrial pathways. *Hepatology* 2008; **47**: 1905-1915 [PMID: 18452148 DOI: 10.1002/hep.22239]
- Zhang L, Yang B, Yu B. Paeoniflorin Protects against Nonalcoholic Fatty Liver Disease Induced by a High-Fat Diet in Mice. *Biol Pharm Bull* 2015; **38**: 1005-1011 [PMID: 25972092 DOI: 10.1248/bpb.b14-00892]
- Clemente JC, Ursell LK, Parfrey LW, Knight R. The impact of the gut microbiota on human health: an integrative view. *Cell* 2012; **148**: 1258-1270 [PMID: 22424233 DOI: 10.1016/j.cell.2012.01.035]
- Qin J, Li R, Raes J, Arumugam M, Burgdorf KS, Manichanh C, Nielsen T, Pons N, Levenez F, Yamada T, Mende DR, Li J, Xu J, Li S, Li D, Cao J, Wang B, Liang H, Zheng H, Xie Y, Tap J, Lepage P, Bertalan M, Batto JM, Hansen T, Le Paslier D, Linneberg A, Nielsen HB, Pelletier E, Renault P, Sicheritz-Ponten T, Turner K, Zhu H, Yu C, Li S, Jian M, Zhou Y, Li Y, Zhang X, Li S, Qin N, Yang H, Wang J, Brunak S, Doré J, Guarner F, Kristiansen K, Pedersen O, Parkhill J, Weissenbach J; MetaHIT Consortium, Bork P, Ehrlich SD, Wang J. A human gut microbial gene catalogue established by metagenomic sequencing. *Nature* 2010; **464**: 59-65 [PMID: 20203603 DOI: 10.1038/nature08821]
- Whitman WB, Coleman DC, Wiebe WJ. Prokaryotes: the unseen majority. *Proc Natl Acad Sci USA* 1998; **95**: 6578-6583 [PMID: 9618454]
- Arumugam M, Raes J, Pelletier E, Le Paslier D, Yamada T, Mende DR, Fernandes GR, Tap J, Bruls T, Batto JM, Bertalan M, Borruel N, Casellas F, Fernandez L, Gautier L, Hansen T, Hattori M, Hayashi T, Kleerebezem M, Kurokawa K, Leclerc M, Levenez F, Manichanh C, Nielsen HB, Nielsen T, Pons N, Poulain J, Qin J, Sicheritz-Ponten T, Tims S, Torrents D, Ugarte E, Zoetendal EG, Wang J, Guarner F, Pedersen O, de Vos WM, Brunak S, Doré J; MetaHIT Consortium, Antolin M, Artiguenave F, Blottiere HM, Almeida M, Brechot C, Cara C, Chervaux C, Cultrone A, Delorme A, Denariac G, Dervyn R, Foerstner KU, Friss C, van de Guchte M, Guedon E, Haimet F, Huber W, van Hylckama-Vlieg J, Jamet A,

- Juste C, Kaci G, Knol J, Lakhdari O, Layec S, Le Roux K, Maguin E, Mérieux A, Melo Minardi R, M'rini C, Muller J, Oozeer R, Parkhill J, Renault P, Rescigno M, Sanchez N, Sunagawa S, Torrejon A, Turner K, Vandemeulebrouck G, Varela E, Winogradsky Y, Zeller G, Weissenbach J, Ehrlich SD, Bork P. Enterotypes of the human gut microbiome. *Nature* 2011; **473**: 174-180 [PMID: [21508958](#) DOI: [10.1038/nature09944](#)]
- 22 **Bäckhed F**, Ding H, Wang T, Hooper LV, Koh GY, Nagy A, Semenkovich CF, Gordon JI. The gut microbiota as an environmental factor that regulates fat storage. *Proc Natl Acad Sci USA* 2004; **101**: 15718-15723 [PMID: [15505215](#) DOI: [10.1073/pnas.0407076101](#)]
- 23 **Bäckhed F**, Manchester JK, Semenkovich CF, Gordon JI. Mechanisms underlying the resistance to diet-induced obesity in germ-free mice. *Proc Natl Acad Sci USA* 2007; **104**: 979-984 [PMID: [17210919](#) DOI: [10.1073/pnas.0605374104](#)]
- 24 **Rabot S**, Membrez M, Bruneau A, Gérard P, Harach T, Moser M, Raymond F, Mansourian R, Chou CJ. Germ-free C57BL/6J mice are resistant to high-fat-diet-induced insulin resistance and have altered cholesterol metabolism. *FASEB J* 2010; **24**: 4948-4959 [PMID: [20724524](#) DOI: [10.1096/fj.10-164921](#)]
- 25 **Mouzaki M**, Comelli EM, Arendt BM, Bonengel J, Fung SK, Fischer SE, McGilvray ID, Allard JP. Intestinal microbiota in patients with nonalcoholic fatty liver disease. *Hepatology* 2013; **58**: 120-127 [PMID: [23401313](#) DOI: [10.1002/hep.26319](#)]
- 26 **Xie W**, Gu D, Li J, Cui K, Zhang Y. Effects and action mechanisms of berberine and Rhizoma coptidis on gut microbes and obesity in high-fat diet-fed C57BL/6J mice. *PLoS One* 2011; **6**: e24520 [PMID: [21915347](#) DOI: [10.1371/journal.pone.0024520](#)]
- 27 **Yin X**, Peng J, Zhao L, Yu Y, Zhang X, Liu P, Feng Q, Hu Y, Pang X. Structural changes of gut microbiota in a rat non-alcoholic fatty liver disease model treated with a Chinese herbal formula. *Syst Appl Microbiol* 2013; **36**: 188-196 [PMID: [23453736](#) DOI: [10.1016/j.syapm.2012.12.009](#)]
- 28 **Feng R**, Shou JW, Zhao ZX, He CY, Ma C, Huang M, Fu J, Tan XS, Li XY, Wen BY, Chen X, Yang XY, Ren G, Lin Y, Chen Y, You XF, Wang Y, Jiang JD. Transforming berberine into its intestine-absorbable form by the gut microbiota. *Sci Rep* 2015; **5**: 12155 [PMID: [26174047](#) DOI: [10.1038/srep12155](#)]
- 29 **Amaretti A**, Raimondi S, Leonardi A, Quartieri A, Rossi M. Hydrolysis of the rutinose-conjugates flavonoids rutin and hesperidin by the gut microbiota and bifidobacteria. *Nutrients* 2015; **7**: 2788-2800 [PMID: [25875120](#) DOI: [10.3390/nu7042788](#)]
- 30 **Liu JP**, Zou WL, Chen SJ, Wei HY, Yin YN, Zou YY, Lu FG. Effects of different diets on intestinal microbiota and nonalcoholic fatty liver disease development. *World J Gastroenterol* 2016; **22**: 7353-7364 [PMID: [27621581](#) DOI: [10.3748/wjg.v22.i32.7353](#)]
- 31 **Caporaso JG**, Kuczynski J, Stombaugh J, Bittinger K, Bushman FD, Costello EK, Fierer N, Peña AG, Goodrich JK, Gordon JI, Huttley GA, Kelley ST, Knights D, Koenig JE, Ley RE, Lozupone CA, McDonald D, Muegge BD, Pirrung M, Reeder J, Sevinsky JR, Turnbaugh PJ, Walters WA, Widmann J, Yatsunenko T, Zaneveld J, Knight R. QIIME allows analysis of high-throughput community sequencing data. *Nat Methods* 2010; **7**: 335-336 [PMID: [20383131](#) DOI: [10.1038/nmeth.f303](#)]
- 32 **Segata N**, Izard J, Waldron L, Gevers D, Miropolsky L, Garrett WS, Huttenhower C. Metagenomic biomarker discovery and explanation. *Genome Biol* 2011; **12**: R60 [PMID: [21702898](#) DOI: [10.1186/gb-2011-12-6-r60](#)]
- 33 **Langille MG**, Zaneveld J, Caporaso JG, McDonald D, Knights D, Reyes JA, Clemente JC, Burkpile DE, Vega Thurber RL, Knight R, Beiko RG, Huttenhower C. Predictive functional profiling of microbial communities using 16S rRNA marker gene sequences. *Nat Biotechnol* 2013; **31**: 814-821 [PMID: [23975157](#) DOI: [10.1038/nbt.2676](#)]
- 34 **Cheng F**, Ma C, Wang X, Zhai C, Wang G, Xu X, Mu J, Li C, Wang Z, Zhang X, Yue W, Du X, Lian Y, Zhu W, Yin X, Wei Z, Song W, Wang Q. Effect of traditional Chinese medicine formula Sinisan on chronic restraint stress-induced nonalcoholic fatty liver disease: a rat study. *BMC Complement Altern Med* 2017; **17**: 203 [PMID: [28388904](#) DOI: [10.1186/s12906-017-1707-2](#)]
- 35 **Marchesini G**, Brizi M, Bianchi G, Tomassetti S, Bugianesi E, Lenzi M, McCullough AJ, Natale S, Forlani G, Melchionda N. Nonalcoholic fatty liver disease: a feature of the metabolic syndrome. *Diabetes* 2001; **50**: 1844-1850 [PMID: [11473047](#)]
- 36 **Marchesini G**, Brizi M, Morselli-Labate AM, Bianchi G, Bugianesi E, McCullough AJ, Forlani G, Melchionda N. Association of nonalcoholic fatty liver disease with insulin resistance. *Am J Med* 1999; **107**: 450-455 [PMID: [10569299](#)]
- 37 **Choudhury J**, Sanyal AJ. Insulin resistance and the pathogenesis of nonalcoholic fatty liver disease. *Clin Liver Dis* 2004; **8**: 575-594, ix [PMID: [15331065](#) DOI: [10.1016/j.cld.2004.04.006](#)]
- 38 **Canì PD**, Amar J, Iglesias MA, Poggi M, Knauf C, Bastelica D, Neyrinck AM, Fava F, Tuohy KM, Chabo C, Waget A, Delmée E, Cousin B, Sulpice T, Chamontin B, Ferrières J, Tanti JF, Gibson GR, Casteilla L, Delzenne NM, Alessi MC, Burcelin R. Metabolic endotoxemia initiates obesity and insulin resistance. *Diabetes* 2007; **56**: 1761-1772 [PMID: [17456850](#) DOI: [10.2337/db06-1491](#)]
- 39 **Le Roy T**, Llopis M, Lepage P, Bruneau A, Rabot S, Bevilacqua C, Martin P, Philippe C, Walker F, Bado A, Perlemuter G, Cassard-Doulcier AM, Gérard P. Intestinal microbiota determines development of non-alcoholic fatty liver disease in mice. *Gut* 2013; **62**: 1787-1794 [PMID: [23197411](#) DOI: [10.1136/gutjnl-2012-303816](#)]
- 40 **Xue L**, He J, Gao N, Lu X, Li M, Wu X, Liu Z, Jin Y, Liu J, Xu J, Geng Y. Probiotics may delay the progression of nonalcoholic fatty liver disease by restoring the gut microbiota structure and improving intestinal endotoxemia. *Sci Rep* 2017; **7**: 45176 [PMID: [28349964](#) DOI: [10.1038/srep45176](#)]
- 41 **Zhou D**, Pan Q, Xin FZ, Zhang RN, He CX, Chen GY, Liu C, Chen YW, Fan JG. Sodium butyrate attenuates high-fat diet-induced steatohepatitis in mice by improving gut microbiota and gastrointestinal barrier. *World J Gastroenterol* 2017; **23**: 60-75 [PMID: [28104981](#) DOI: [10.3748/wjg.v23.i1.60](#)]
- 42 **Cao Y**, Pan Q, Cai W, Shen F, Chen GY, Xu LM, Fan JG. Modulation of Gut Microbiota by Berberine Improves Steatohepatitis in High-Fat Diet-Fed BALB/C Mice. *Arch Iran Med* 2016; **19**: 197-203 [PMID: [26923892](#) DOI: [0161903/AIM.008](#)]
- 43 **Zhu L**, Baker SS, Gill C, Liu W, Alkhouri R, Baker RD, Gill SR. Characterization of gut microbiomes in nonalcoholic steatohepatitis (NASH) patients: a connection between endogenous alcohol and NASH. *Hepatology* 2013; **57**: 601-609 [PMID: [23055155](#) DOI: [10.1002/hep.26093](#)]
- 44 **Del Chierico F**, Nobili V, Vernocchi P, Russo A, Stefanis C, Gnani D, Furlanello C, Zandonà A, Paci P, Capuani G, Dallapiccola B, Miccheli A, Alisi A, Putignani L. Gut microbiota profiling of pediatric nonalcoholic fatty liver disease and obese patients unveiled by an integrated meta-omics-based approach. *Hepatology* 2017; **65**: 451-464 [PMID: [27028797](#) DOI: [10.1002/hep.28572](#)]
- 45 **Walters WA**, Xu Z, Knight R. Meta-analyses of human gut microbes associated with obesity and IBD.

- FEBS Lett* 2014; **588**: 4223-4233 [PMID: [25307765](#) DOI: [10.1016/j.febslet.2014.09.039](#)]
- 46 **Verdam FJ**, Fuentes S, de Jonge C, Zoetendal EG, Erbil R, Greve JW, Buurman WA, de Vos WM, Rensen SS. Human intestinal microbiota composition is associated with local and systemic inflammation in obesity. *Obesity (Silver Spring)* 2013; **21**: E607-E615 [PMID: [23526699](#) DOI: [10.1002/oby.20466](#)]
- 47 **Gophna U**, Konikoff T, Nielsen HB. Oscillospira and related bacteria - From metagenomic species to metabolic features. *Environ Microbiol* 2017; **19**: 835-841 [PMID: [28028921](#) DOI: [10.1111/1462-2920.13658](#)]
- 48 **Cushing K**, Alvarado DM, Ciorba MA. Butyrate and Mucosal Inflammation: New Scientific Evidence Supports Clinical Observation. *Clin Transl Gastroenterol* 2015; **6**: e108 [PMID: [26312412](#) DOI: [10.1038/ctg.2015.34](#)]
- 49 **Qin J**, Li Y, Cai Z, Li S, Zhu J, Zhang F, Liang S, Zhang W, Guan Y, Shen D, Peng Y, Zhang D, Jie Z, Wu W, Qin Y, Xue W, Li J, Han L, Lu D, Wu P, Dai Y, Sun X, Li Z, Tang A, Zhong S, Li X, Chen W, Xu R, Wang M, Feng Q, Gong M, Yu J, Zhang Y, Zhang M, Hansen T, Sanchez G, Raes J, Falony G, Okuda S, Almeida M, LeChatelier E, Renault P, Pons N, Batto JM, Zhang Z, Chen H, Yang R, Zheng W, Li S, Yang H, Wang J, Ehrlich SD, Nielsen R, Pedersen O, Kristiansen K, Wang J. A metagenome-wide association study of gut microbiota in type 2 diabetes. *Nature* 2012; **490**: 55-60 [PMID: [23023125](#) DOI: [10.1038/nature11450](#)]
- 50 **Karlsson FH**, Tremaroli V, Nookaew I, Bergström G, Behre CJ, Fagerberg B, Nielsen J, Bäckhed F. Gut metagenome in European women with normal, impaired and diabetic glucose control. *Nature* 2013; **498**: 99-103 [PMID: [23719380](#) DOI: [10.1038/nature12198](#)]
- 51 **Arora T**, Bäckhed F. The gut microbiota and metabolic disease: current understanding and future perspectives. *J Intern Med* 2016; **280**: 339-349 [PMID: [27071815](#) DOI: [10.1111/joim.12508](#)]
- 52 **Bermudez-Brito M**, Plaza-Díaz J, Muñoz-Quezada S, Gómez-Llorente C, Gil A. Probiotic mechanisms of action. *Ann Nutr Metab* 2012; **61**: 160-174 [PMID: [23037511](#) DOI: [10.1159/000342079](#)]



Published By Baishideng Publishing Group Inc
7041 Koll Center Parkway, Suite 160, Pleasanton, CA 94566, USA
Telephone: +1-925-2238242
Fax: +1-925-2238243
E-mail: bpgoffice@wjgnet.com
Help Desk: <http://www.f6publishing.com/helpdesk>
<http://www.wjgnet.com>

