

Supplementary File 1. Genes associated with acute liver failure

Gene	Disease	Reference
<i>TRMU</i>	Liver failure, transient infantile	[1]
<i>GFM1</i>	Combined oxidative phosphorylation deficiency 1	[2]
<i>TSMF</i>	Combined oxidative phosphorylation deficiency 3	[3]
<i>POLG</i>	Mitochondrial DNA depletion syndrome 4A (Alpers type)	[4]
<i>DGUOK</i>	Mitochondrial DNA depletion syndrome 3 (hepatocerebral type)	[5]
<i>MPV17</i>	Mitochondrial DNA depletion syndrome 6 (hepatocerebral type)	[6]
<i>LARS</i>	Infantile liver failure syndrome 1	[7]
<i>NBAS</i>	Infantile liver failure syndrome 2	[8]
<i>SCYL1</i>	Spinocerebellar ataxia, autosomal recessive 21	[9]
<i>DLD</i>	Dihydrolipoamide dehydrogenase deficiency	[10]
<i>EIF2AK3</i>	Wolcott-Rallison syndrome	[11]
<i>ALDOB</i>	Fructose intolerance	[12]

References

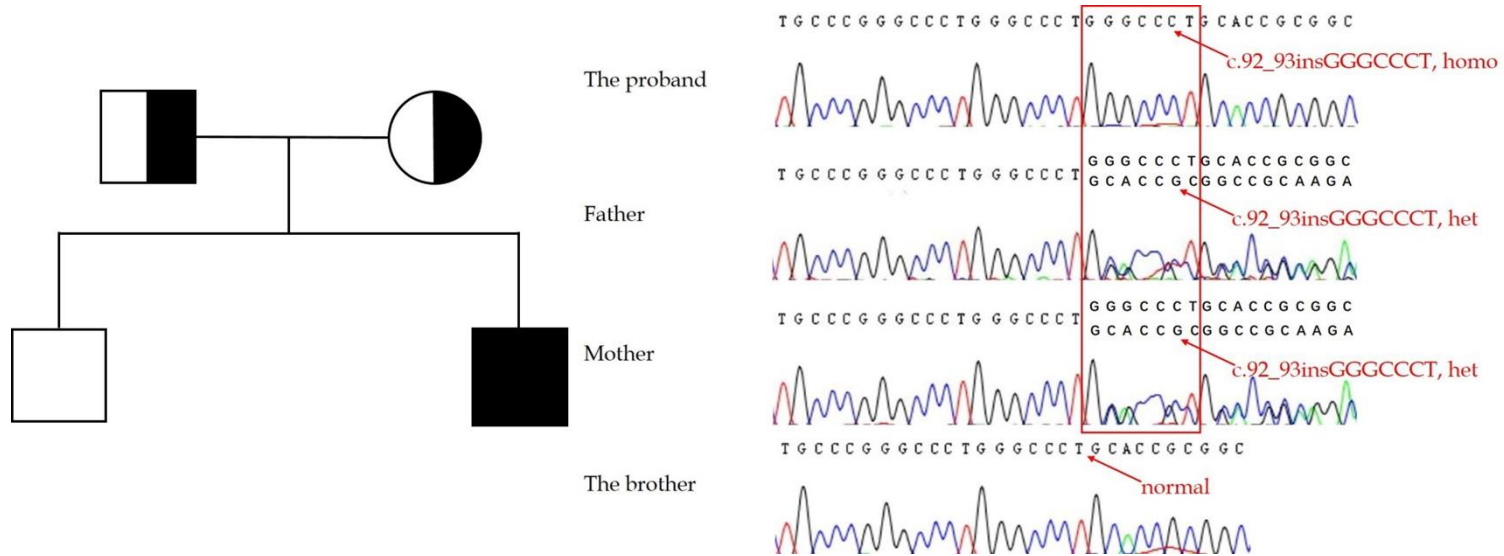
- 1 **Zeharia A**, Shaag A, Pappo O, Mager-Heckel AM, Saada A, Beinat M, Karicheva O, Mandel H, Ofek N, Segel R, Marom D, Rötig A, Tarassov I, Elpeleg O. Acute infantile liver failure due to mutations in the *TRMU* gene. *Am J Hum Genet* 2009; **85**:

401-407 [PMID: 19732863 PMCID: PMC2771591 DOI: 10.1016/j.ajhg.2009.08.004]

- 2 **Coenen MJ**, Antonicka H, Ugalde C, Sasarman F, Rossi R, Heister JG, Newbold RF, Trijbels FJ, van den Heuvel LP, Shoubridge EA, Smeitink JA. Mutant mitochondrial elongation factor G1 and combined oxidative phosphorylation deficiency. *N Engl J Med* 2004; **351**: 2080-2086 [PMID: 15537906 DOI: 10.1056/NEJMoa041878]
- 3 **Vedrenne V**, Galmiche L, Chretien D, de Lonlay P, Munnich A, Rotig A. Mutation in the mitochondrial translation elongation factor EFTs results in severe infantile liver failure. *J Hepatol* 2012; **56**: 294-297 [PMID: 21741925 DOI: 10.1016/j.jhep.2011.06.014]
- 4 **Ferrari G**, Lamantea E, Donati A, Filosto M, Briem E, Carrara F, Parini R, Simonati A, Santer R, Zeviani M. Infantile hepatocerebral syndromes associated with mutations in the mitochondrial DNA polymerase-gammaA. *Brain* 2005; **128**: 723-731 [PMID: 15689359 DOI: 10.1093/brain/awh410]
- 5 **Blake JC**, Taanman JW, Morris AM, Gray RG, Cooper JM, McKiernan PJ, Leonard JV, Schapira AH. Mitochondrial DNA depletion syndrome is expressed in amniotic fluid cell cultures. *Am J Pathol* 1999; **155**: 67-70 [PMID: 10393838 PMCID: PMC1866668 DOI: 10.1016/S0002-9440(10)65100-0]
- 6 **Spinazzola A**, Santer R, Akman OH, Tsiakas K, Schaefer H, Ding X, Karadimas CL, Shanske S, Ganesh J, Di Mauro S, Zeviani M. Hepatocerebral form of mitochondrial DNA depletion syndrome: novel *MPV17* mutations. *Arch Neurol* 2008; **65**: 1108-1113 [PMID: 18695062 DOI: 10.1001/archneur.65.8.1108]
- 7 **Casey JP**, McGettigan P, Lynam-Lennon N, McDermott M, Regan R, Conroy J, Bourke B, O'Sullivan J, Crushell E, Lynch S, Ennis S. Identification of a mutation in *LARS* as a novel cause of infantile hepatopathy. *Mol Genet Metab* 2012; **106**: 351-358 [PMID: 22607940 DOI: 10.1016/j.ymgme.2012.04.017]

- 8 **Haack TB**, Staufner C, Köpke MG, Straub BK, Kölker S, Thiel C, Freisinger P, Baric I, McKiernan PJ, Dikow N, Harting I, Beisse F, Burgard P, Kotzaeridou U, Kühr J, Himbert U, Taylor RW, Distelmaier F, Vockley J, Ghaloul-Gonzalez L, Zschocke J, Kremer LS, Graf E, Schwarzmayer T, Bader DM, Gagneur J, Wieland T, Terrile C, Strom TM, Meitinger T, Hoffmann GF, Prokisch H. Biallelic mutations in *NBAS* cause recurrent acute liver failure with onset in infancy. *Am J Hum Genet* 2015; **97**: 163-169 [PMID: 26073778 PMID: PMC4572578 DOI: 10.1016/j.ajhg.2015.05.009]
- 9 **Schmidt WM**, Rutledge SL, Schule R, Mayerhofer B, Zuchner S, Boltshauser E, Bittner RE. Disruptive *SCYL1* mutations underlie a syndrome characterized by recurrent episodes of liver failure, peripheral neuropathy, cerebellar atrophy, and ataxia. *Am J Hum Genet* 2015; **97**: 855-861 [PMID: 26581903 PMID: PMC4678415 DOI: 10.1016/j.ajhg.2015.10.011]
- 10 **Brassier A**, Ottolenghi C, Boutron A, Bertrand AM, Valmary-Degano S, Cervoni JP, Chrétien D, Arnoux JB, Hubert L, Rabier D, Lacaille F, de Keyzer Y, Di Martino V, de Lonlay P. Dihydrolipoamide dehydrogenase deficiency: a still overlooked cause of recurrent acute liver failure and Reye-like syndrome. *Mol Genet Metab* 2013; **109**: 28-32 [PMID: 23478190 DOI: 10.1016/j.ymgme.2013.01.017]
- 11 **Engelmann G**, Meyburg J, Shahbek N, Al-Ali M, Hairetis MH, Baker AJ, Rodenburg RJ, Wenning D, Flechtenmacher C, Ellard S, Smeitink JA, Hoffmann GF, Buchanan CR. Recurrent acute liver failure and mitochondriopathy in a case of Wolcott-Rallison syndrome. *J Inherit Metab Dis* 2008; **31**: 540-546 [PMID: 18704764 DOI: 10.1007/s10545-008-0867-0]
- 12 **Muller-Wiefel DE**, Steinmann B, Holm-Hadulla M, Wille L, Scharer K, Gitzelmann R. Infusion-associated kidney and liver failure in undiagnosed hereditary fructose intolerance. *Dtsch Med Wochenschr* 1983; **108**: 985-989 [PMID: 6851900 DOI: 10.1055/s-2008-1069680]

Supplementary File 2. Mutated region, *SCYL1*, in proband, brother, and parents, with pedigree



Homo: Homozygote; Het: Heterozygote.

Supplementary File 3. Age at onset of hepatic and neurologic abnormalities

Patient	Age at first episode of RALF	Neurogenic stutter (yr)	Walking independently (mo)	Gait ataxia	Tremor (type, age)	References
P1	9 mo	20	17	Early childhood	Intention, early childhood	Schmidt <i>et al</i> ^[1]
P2	9 mo	4	24	Early childhood	Intention, early childhood	Schmidt <i>et al</i> ^[1]
P3	18 mo	3	12	3 yr	Action, NA	Schmidt <i>et al</i> ^[1]
P4	NA	NA	NA	NA	NA	Smith <i>et al</i> ^[2]
P5	11 mo	Temporary	15	None	None	Lenz <i>et al</i> ^[3]
P6	7 mo	None	14	None	None	Lenz <i>et al</i> ^[3]
P7	5 mo	None	15	None	None	Lenz <i>et al</i> ^[3]
P8	6 mo	None	NA	None	Action, 4 yr	Lenz <i>et al</i> ^[3]
P9	4 yr	10	15	9 yr	Intention, 6 yr	Lenz <i>et al</i> ^[3]
P10	10 mo	4	15	5 yr	Intention, 6 yr	Lenz <i>et al</i> ^[3]
P11	18 mo	2	15	None	None	Lenz <i>et al</i> ^[3]
P12	4 mo	none	22	Yes, NA	Action, 1 yr	Shohet <i>et al</i> ^[4]
P13	Infancy (not further	Yes, NA	12	Yes, NA	Intention, NA	Shohet <i>et al</i> ^[4]

	specified)					
P14	None	NA	Normal, NA	2 yr 9 mo	23 mo	Spagnoli <i>et al</i> ^[5]

NA: Not available. The age at onset of signs of peripheral neuropathy was not precisely reported.

References:

- 1 **Schmidt WM**, Rutledge SL, Schule R, Mayerhofer B, Zuchner S, Boltshauser E, Bittner RE. Disruptive *SCYL1* mutations underlie a syndrome characterized by recurrent episodes of liver failure, peripheral neuropathy, cerebellar atrophy, and ataxia. *Am J Hum Genet* 2015; **97**: 855-861 [PMID: 26581903 PMCID: PMC4678415 DOI: 10.1016/j.ajhg.2015.10.011]
- 2 **Smith ED**, Radtke K, Rossi M, Shinde DN, Darabi S, El-Khechen D, Powis Z, Helbig K, Waller K, Grange DK, Tang S, Farwell Hagman KD. Classification of genes: standardized clinical validity assessment of gene-disease associations aids diagnostic exome analysis and reclassifications. *Hum Mutat* 2017; **38**: 600-608 [PMID: 28106320 PMCID: PMC5655771 DOI: 10.1002/humu.23183]
- 3 **Lenz D**, McClean P, Kansu A, Bonnen PE, Ranucci G, Thiel C, Straub BK, Harting I, Alhaddad B, Dimitrov B, Kotzaeridou U, Wenning D, Iorio R, Himes RW, Kuloğlu Z, Blakely EL, Taylor RW, Meitinger T, Kölker S, Prokisch H, Hoffmann GF, Haack TB, Staufner C. *SCYL1* variants cause a syndrome with low γ -glutamyl-transferase cholestasis, acute liver failure, and neurodegeneration (CALFAN). *Genet Med* 2018 [PMID: 29419818 DOI: 10.1038/gim.2017.260]
- 4 **Shohet A**, Cohen L, Haguel D, Mozer Y, Shomron N, Tzur S, Bazak L, Basel Salmon L, Krause I. Variant in *SCYL1* gene causes aberrant splicing in a family with cerebellar ataxia, recurrent episodes of liver failure, and growth retardation. *Eur J Hum Genet* 2018 [PMID: 30258122 DOI: 10.1038/s41431-018-0268-2]

- 5 **Spagnoli C**, Frattini D, Salerno GG, Fusco C. On CALFAN syndrome: report of a patient with a novel variant in *SCYL1* gene and recurrent respiratory failure [letter]. *Genet Med* 2018 [PMID: 30531813 DOI: 10.1038/s41436-018-0389-6]