

**Name of Journal:** *Artificial Intelligence in Cancer*

**Manuscript NO:** 59750

**Manuscript Type:** MINIREVIEWS

**Artificial intelligence for modeling uveal melanoma**

Santos-Buitrago B *et al.* AI: Modeling uveal melanoma

Beatriz Santos-Buitrago, Gustavo Santos-García, Emiliano Hernández-Galilea

## Abstract

Understanding of the cellular signaling pathways involved in cancer disease is of great importance. These complex biological mechanisms can be thoroughly revealed by their

## Match Overview

25 matches

1	<b>Crossref</b> 436 words Beatriz Santos-Buitrago, Emiliano Hernández-Galilea. "Chapter 12 Signaling Transduction Networks in Choroidal Melanoma"	8%
2	<b>Internet</b> 184 words crawled on 18-Oct-2019 <a href="http://ddd.uab.cat">ddd.uab.cat</a>	3%
3	<b>Crossref</b> 142 words Beatriz Álvarez-Rodríguez, Alfonso Latorre, Christian Posada, Álvaro Somoza. "Recent advances in uveal melanoma treatment"	3%
4	<b>Internet</b> 94 words crawled on 07-Nov-2017 <a href="http://link.springer.com">link.springer.com</a>	2%
5	<b>Crossref</b> 37 words Beatriz Santos-Buitrago, Adrián Riesco, Merrill Knapp, Gustavo Santos-García, Carolyn Talcott. "Chapter 13 Reverse Engineering of Cellular Signaling Pathways in Uveal Melanoma"	1%
6	<b>Crossref</b> 32 words "Practical Applications of Computational Biology & Bioinformatics, 14th International Conference (PACBB 2020)", Springer	1%
7	<b>Crossref</b> 13 words "Role of Nerve Growth Factor Signaling in Cancer Cell Proliferation and Survival Using a Reachability Analysis Approach"	<1%
8	<b>Crossref</b> 11 words Advances in Intelligent Systems and Computing, 2016.	<1%

ALL IMAGES VIDEOS

497,000 Results Any time ▾

**Prediction of BAP1 Expression in Uveal Melanoma Using ...**  
<https://www.mdpi.com/2072-6694/11/10/1579> ▾

In this study, we verified whether artificial intelligence could predict manual assessments of BAP1 expression in 47 enucleated eyes with uveal melanoma, collected from one European and one American referral center. Digitally scanned pathology slides were divided into 8176 patches, each with a size of 256 × 256 pixels.

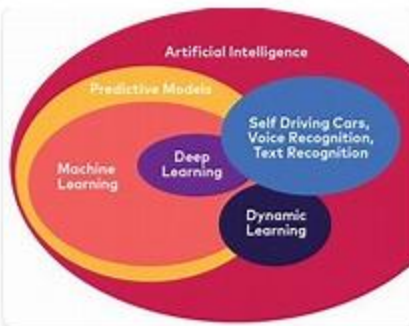
Cited by: 6 Author: Muyi Sun, Wei Zhou, Xingqun Qi, Guanho...  
 Publish Year: 2019

**Prediction of BAP1 Expression in Uveal Melanoma Using ...**  
<https://www.mdpi.com/2072-6694/11/10/1579/htm> ▾

In this study, we verified whether artificial intelligence could predict manual assessments of BAP1 expression in 47 enucleated eyes with uveal melanoma, collected from one European and one American referral center. Digitally scanned pathology slides were divided into 8176 patches, each with a ...

Cited by: 6 Author: Muyi Sun, Wei Zhou, Xingqun Qi, Guanho...  
 Publish Year: 2019

**Images of Artificial Intelligence for Modeling Uveal melanoma**  
<bing.com/images>



See all images >





ALL

IMAGES

VIDEOS

414,000 Results

Any time ▾

## Prediction of BAP1 Expression in Uveal Melanoma Using ...

<https://www.mdpi.com/2072-6694/11/10/1579> ▾

In this study, we verified whether **artificial intelligence** could predict manual assessments of BAP1 expression in 47 **enucleated eyes with uveal melanoma**, collected from one European and one American referral center. Digitally scanned **pathology slides** were divided into 8176 patches, each with a size of 256 × 256 pixels.

Cited by: 6

Author: Muyi Sun, Wei Zhou, Xingqun Qi, Guanho...

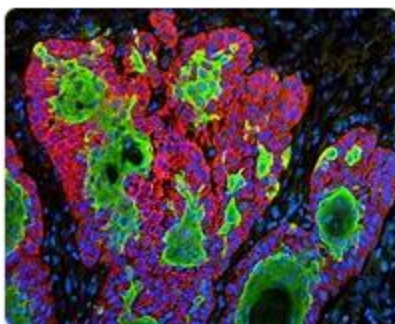
Publish Year: 2019

## Cancers | Special Issue : Uveal Melanoma

[https://www.mdpi.com/journal/cancers/special\\_issues/uveal\\_melanoma](https://www.mdpi.com/journal/cancers/special_issues/uveal_melanoma) ▾

In this study, we verified whether **artificial intelligence** could predict manual assessments of BAP1 expression in 47 **enucleated eyes with uveal melanoma**, collected from one European and one American referral center. Digitally scanned **pathology slides** were divided into 8176 patches, each with a size of 256 × 256 pixels.

## Images of Artificial intelligence for modeling Uveal Melanoma

<bing.com/images>[See all images >](#)

## 664 Applying advanced data analysis to immunotherapy ...

[https://jitc.bmj.com/content/8/Suppl\\_3/A701](https://jitc.bmj.com/content/8/Suppl_3/A701) ▾

Background Uveal melanoma is a rare variant of melanoma associated with monosomy 3, present



ALL IMAGES VIDEOS MAPS NEWS SHOPPING

414,000 Results Any time

### Prediction of BAP1 Expression in Uveal Melanoma Using ...

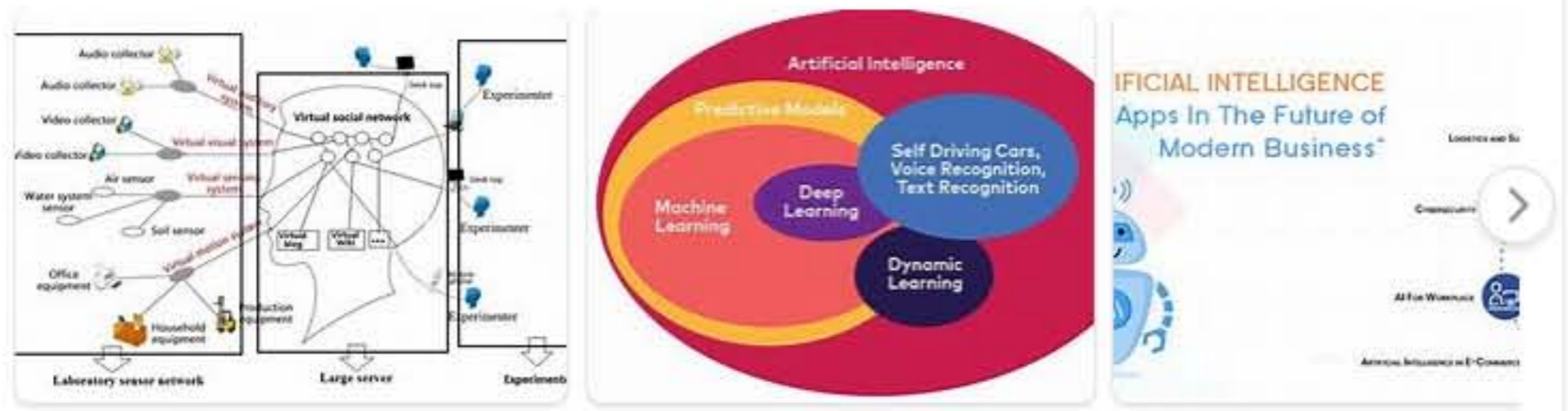
<https://www.mdpi.com/2072-6694/11/10/1579>

In this study, we verified whether **artificial intelligence** could predict manual assessments of BAP1 expression in 47 **enucleated eyes** with **uveal melanoma**, collected from one European and one American referral center. Digitally **scanned pathology slides** were divided into 8176 patches, each with a ...

Cited by: 6 Author: Muyi Sun, Wei Zhou, Xingqun Qi, Guanhong...  
Publish Year: 2019

### Images of Artificial Intelligence for Modeling Uveal Melanoma

<bing.com/images>



See all images >

### Related searches

- Q uveal melanoma **specialists**
- Q uveal melanoma **cat**
- Q uveal melanoma **stages**
- Q uveal melanoma **symptoms**
- Q uveal melanoma **clinical trials**
- Q **kytruda** and metastatic uveal melanoma
- Q uveal melanoma **survival rate**
- Q **ocular** melanoma

### 664 Applying advanced data analysis to immunotherapy drug ...

[https://jitc.bmj.com/content/8/Suppl\\_3/A701](https://jitc.bmj.com/content/8/Suppl_3/A701)

Background **Uveal melanoma** is a rare variant of **melanoma** associated with monosomy 3, present high risk for metastatic disease, and has been resistant to all therapeutic approaches. We sought to use a novel advanced big data approach to identify potential new immunotherapy targets for the treatment of **uveal melanoma**. Methods Comprehensive multiplatform analysis of 80 primary **uveal melanoma** ...

### A survey on artificial intelligence in chest imaging of ...