

Supplemental Materials:

US Cohorts Results from TriNetX

The results are summarized in the table below. Analysis was performed on the cohorts after propensity score matching.

Propensity Score Matching

Propensity score matching was performed on 3 characteristic(s). In the Demographics category patients were matched on Age at Index, Female, Male characteristic(s). Characteristics of the cohorts before and after matching are summarized in the table below.

Cohort 1 and cohort 2 patient count before and after propensity score matching						
Cohort			Patient count before matching	Patient count after matching		
1 - Hispanic MASH US			17,054	17,051		
2 - Non-Hispanic MASH US			130,720	17,051		

Propensity score density function - Before and after matching (cohort 1 - purple, cohort 2 - green)						
---	--	--	--	--	--	--

Cohort 1 (N = 17,054) and cohort 2 (N = 130,720) characteristics before propensity score matching							
Demographics							
Cohort			Mean ± SD	Patients	% of Cohort	P-Value	Std diff.
1	AI	Age at Index	47.2 +/- 19.0	17,052	100%	<0.001	0.542
2			56.5 +/- 15.1	130,692	100%		
1	F	Female		10,162	59.6%	<0.001	0.067
2				73,568	56.3%		
1	2135-2	Hispanic or Latino		17,052	100%	<0.001	--
2				0	0%		
1	2186-5	Not Hispanic or Latino		0	0%	<0.001	2.460
2				98,220	75.2%		
1	M	Male		6,888	40.4%	<0.001	0.067
2				57,108	43.7%		
Diagnosis							
Cohort			Mean ± SD	Patients	% of Cohort	P-Value	Std diff.
1	C22.0	Liver cell carcinoma		586	3.4%	<0.001	0.060
2				3,174	2.4%		

1	E11	Type 2 diabetes mellitus	5,943	34.9%	0.640	0.004
2			45,312	34.7%		
1	K74	Fibrosis and cirrhosis of liver	4,284	25.1%	0.277	0.009
2			33,338	25.5%		
1	R99-R99	Ill-defined and unknown cause of mortality (R99)	215	1.3%	<0.001	0.029
2			1,245	1.0%		

Cohort 1 (N = 17,051) and cohort 2 (N = 17,051) characteristics after propensity score matching

Demographics

Cohort			Mean ± SD	Patients	% of Cohort	P-Value	Std diff.
1	AI	Age at Index	47.2 +/- 19.0	17,051	100%	0.884	0.002
2			47.2 +/- 18.9	17,051	100%		
1	F	Female		10,161	59.6%	0.414	0.009
2				10,235	60.0%		
1	2135-2	Hispanic or Latino		17,051	100%	<0.001	--
2				0	0%		
1	2186-5	Not Hispanic or Latino		0	0%	<0.001	2.426
2				12,726	74.6%		
1	M	Male		6,888	40.4%	0.420	0.009
2				6,815	40.0%		

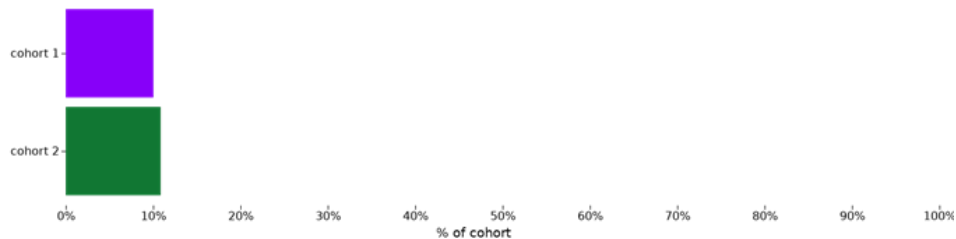
Diagnosis

Cohort			Mean ± SD	Patients	% of Cohort	P-Value	Std diff.
1	C22.0	Liver cell carcinoma		586	3.4%	<0.001	0.122
2				263	1.5%		
1	E11	Type 2 diabetes mellitus		5,943	34.9%	<0.001	0.132
2				4,894	28.7%		
1	K74	Fibrosis and cirrhosis of liver		4,284	25.1%	<0.001	0.118
2				3,446	20.2%		
1	R99-R99	Ill-defined and unknown cause of mortality (R99)		215	1.3%	<0.001	0.040
2				146	0.9%		

Results

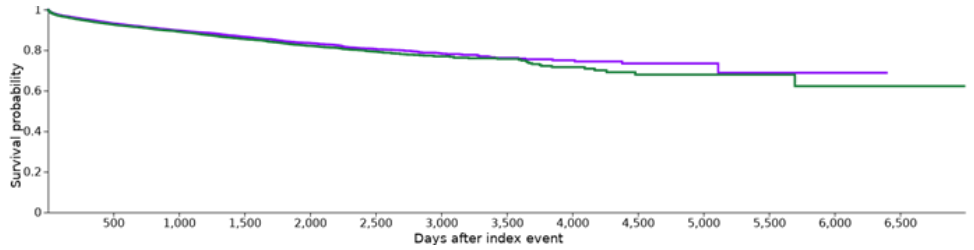
Results are summarized in the table below. Analysis was performed on the cohorts after propensity score matching.

1 Mortality					
Risk analysis					
Cohort		Patients in cohort	Patients with outcome	Risk	
1	Hispanic MASH US	17,051	1,710	0.100	
2	Non-Hispanic MASH US	17,051	1,851	0.109	
			95% CI	z	p
	Risk Difference	-0.008	(-0.015, -0.002)	-2.497	0.013
	Risk Ratio	0.924	(0.868, 0.983)	N/A	N/A
	Odds Ratio	0.915	(0.854, 0.981)	N/A	N/A



Kaplan - Meier survival analysis					
Cohort		Patients in cohort	Patients with outcome	Median survival (days)	Survival probability at end of time window
1	Hispanic MASH US	17,051	1,710	--	68.85%
2	Non-Hispanic MASH US	17,051	1,851	--	62.26%
			χ^2	df	p
	Log-Rank Test	6.216	1	0.013	

	Hazard Ratio	95% CI	χ^2	df	p
Hazard Ratio and Proportionality	0.920	(0.861, 0.982)	0.004	1	0.952

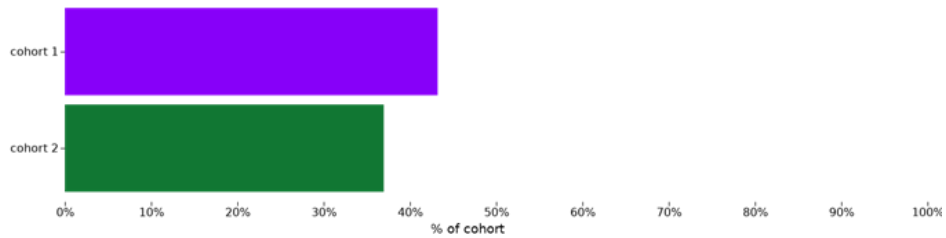


2 T2DM

Risk analysis

Cohort		Patients in cohort	Patients with outcome	Risk
1	Hispanic MASH US	17,051	7,367	0.432
2	Non-Hispanic MASH US	17,051	6,302	0.370

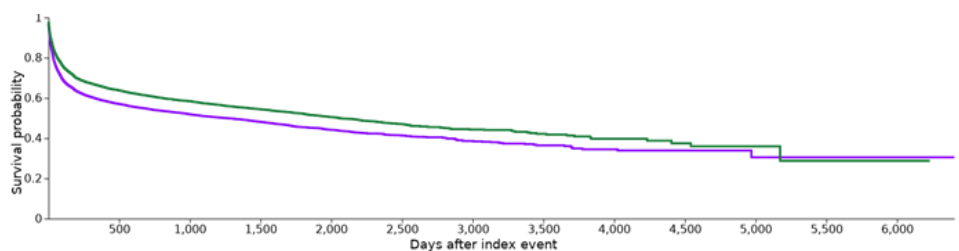
		95% CI	z	p
Risk Difference	0.062	(0.052, 0.073)	11.768	0.000
Risk Ratio	1.169	(1.139, 1.200)	N/A	N/A
Odds Ratio	1.298	(1.242, 1.355)	N/A	N/A



Kaplan - Meier survival analysis

Cohort		Patients in cohort	Patients with outcome	Median survival (days)	Survival probability at end of time window
1	Hispanic MASH US	17,051	7,367	1261	30.51%

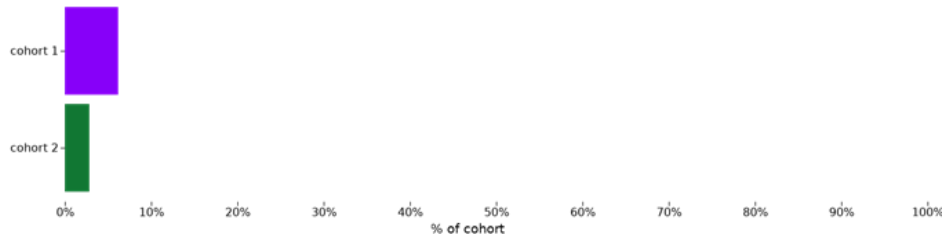
2	Non-Hispanic MASH US	17,051	6,302	2058	28.78%	
		χ^2	df	p		
Log-Rank Test		159.139	1	0.000		
		Hazard Ratio	95% CI	χ^2	df	p
Hazard Ratio and Proportionality		1.241	(1.200, 1.283)	18.651	1	0.000



3 HCC

Risk analysis

Cohort		Patients in cohort	Patients with outcome	Risk	
1	Hispanic MASH US	17,051	1,052	0.062	
2	Non-Hispanic MASH US	17,051	482	0.028	
			95% CI	z	p
Risk Difference		0.033	(0.029, 0.038)	14.892	0.000
Risk Ratio		2.183	(1.964, 2.426)	N/A	N/A
Odds Ratio		2.260	(2.025, 2.523)	N/A	N/A

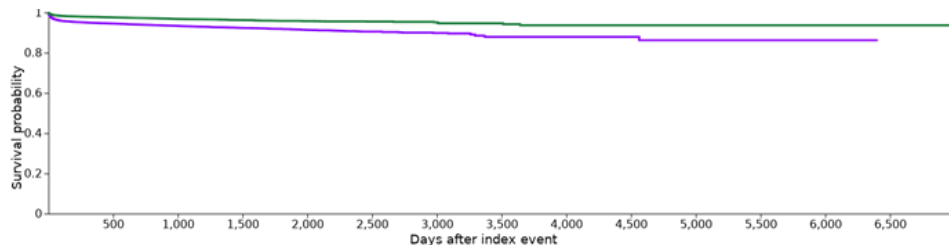


Kaplan - Meier survival analysis

Cohort		Patients in cohort	Patients with outcome	Median survival (days)	Survival probability at end of time window
1	Hispanic MASH US	17,051	1,052	--	86.26%
2	Non-Hispanic MASH US	17,051	482	--	93.69%

	χ^2	df	p
Log-Rank Test	217.884	1	0.000

	Hazard Ratio	95% CI	χ^2	df	p
Hazard Ratio and Proportionality	2.206	(1.980, 2.457)	5.537	1	0.019



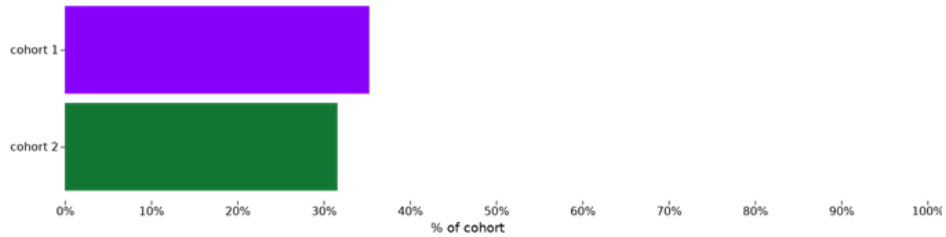
4 Fibrosis/Cirrhosis

Risk analysis

Cohort		Patients in cohort	Patients with outcome	Risk
1	Hispanic MASH US	17,051	6,017	0.353
2	Non-Hispanic MASH US	17,051	5,389	0.316

95% CI	z	p
--------	---	---

Risk Difference	0.037	(0.027, 0.047)	7.208	0.000
Risk Ratio	1.117	(1.084, 1.151)	N/A	N/A
Odds Ratio	1.180	(1.128, 1.234)	N/A	N/A

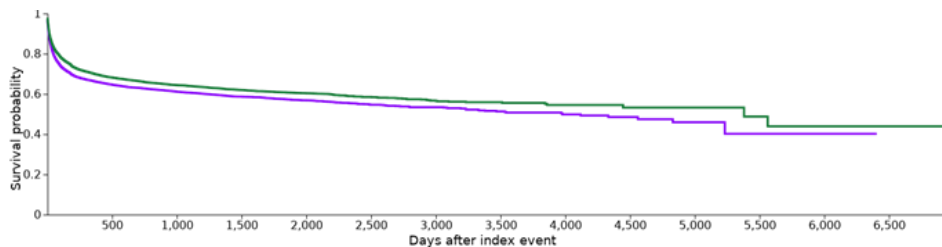


Kaplan - Meier survival analysis

Cohort		Patients in cohort	Patients with outcome	Median survival (days)	Survival probability at end of time window
1	Hispanic MASH US	17,051	6,017	3977	40.21%
2	Non-Hispanic MASH US	17,051	5,389	5380	43.93%

	χ^2	df	p
Log-Rank Test	55.205	1	0.000

	Hazard Ratio	95% CI	χ^2	df	p
Hazard Ratio and Proportionality	1.149	(1.108, 1.192)	9.292	1	0.002



UTMB Cohorts Results from TriNetX

Results are summarized in the table below. Analysis was performed on the cohorts after propensity score matching.

Propensity Score Matching

Propensity score matching was performed on 3 characteristic(s). In the Demographics category patients were matched on Female, Male, Age at Index characteristic(s). Characteristics of the cohorts before and after matching are summarized in the table below.

Cohort 1 and cohort 2 patient count before and after propensity score matching							
Cohort			Patient count before matching	Patient count after matching			
1 - Hispanic MASH UTMB			4,090	4,090			
2 - Non-Hispanic MASH UTMB			11,150	4,090			
Propensity score density function - Before and after matching (cohort 1 - purple, cohort 2 - green)							
Cohort 1 (N = 4,090) and cohort 2 (N = 11,150) characteristics before propensity score matching							
Demographics							
Cohort			Mean ± SD	Patients	% of Cohort	P-Value	Std diff.
1	AI	Age at Index	45.8 +/- 16.9	4,090	100%	<0.001	0.400
2			52.6 +/- 17.0	11,150	100%		
1	F	Female		2,430	59.4%	<0.001	0.095
2			6,100	54.7%			
1	M	Male		1,670	40.8%	<0.001	0.092
2			5,060	45.4%			
Diagnosis							
Cohort			Mean ± SD	Patients	% of Cohort	P-Value	Std diff.
1	C22.0	Liver cell carcinoma		30	0.7%	0.163	0.025
2			60	0.5%			
1	K74	Fibrosis and cirrhosis of liver		410	10.0%	0.012	0.045
2			970	8.7%			
1	R99-R99	Ill-defined and unknown cause of mortality (R99)		220	5.4%	0.001	0.059
2			460	4.1%			
1	E11	Type 2 diabetes mellitus		2,040	49.9%	0.005	0.052
2			5,850	52.5%			
Cohort 1 (N = 4,090) and cohort 2 (N = 4,090) characteristics after propensity score matching							
Demographics							

Cohort			Mean ± SD	Patients	% of Cohort	P-Value	Std diff.
1	AI	Age at Index	45.8 +/- 16.9	4,090	100%	1	<0.001
2			45.8 +/- 16.9	4,090	100%		
1	F	Female		2,430	59.4%	1	<0.001
2			2,430	59.4%			
1	M	Male		1,670	40.8%	1	<0.001
2			1,670	40.8%			
Diagnosis							
Cohort			Mean ± SD	Patients	% of Cohort	P-Value	Std diff.
1	C22.0	Liver cell carcinoma		30	0.7%	1	<0.001
2			30	0.7%			
1	K74	Fibrosis and cirrhosis of liver		410	10.0%	<0.001	0.086
2			310	7.6%			
1	R99-R99	Ill-defined and unknown cause of mortality (R99)		220	5.4%	0.002	0.070
2			160	3.9%			
1	E11	Type 2 diabetes mellitus		2,040	49.9%	0.027	0.049
2			1,940	47.4%			

Results

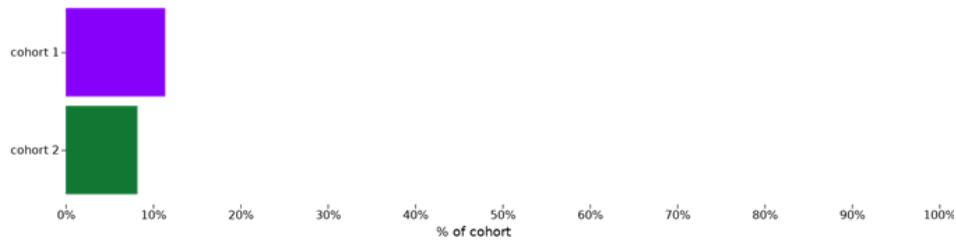
Results are summarized in the table below. Analysis was performed on the cohorts after propensity score matching.

1 Fibrosis/Cirrhosis

Risk analysis excluding patients with outcome prior to the time window

Cohort		Patients in cohort	Patients with outcome	Risk
1	Hispanic MASH UTMB	3,690	420	0.114
2	Non-Hispanic MASH UTMB	3,780	310	0.082

		95% CI	z	p
Risk Difference	0.032	(0.018, 0.045)	4.629	0.000
Risk Ratio	1.388	(1.207, 1.596)	N/A	N/A
Odds Ratio	1.438	(1.232, 1.678)	N/A	N/A



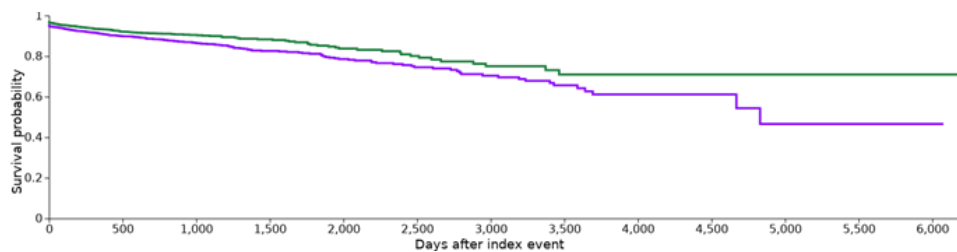
410 patients in Cohort 1 and 310 patients in Cohort 2 were excluded from results because they had the outcome prior to the time window.

Kaplan - Meier survival analysis excluding patients with outcome prior to the time window

Cohort		Patients in cohort	Patients with outcome	Median survival (days)	Survival probability at end of time window
1	Hispanic MASH UTMB	3,690	420	4830	46.58%
2	Non-Hispanic MASH UTMB	3,780	310	--	70.97%

	χ^2	df	p
Log-Rank Test	18.498	1	0.000

	Hazard Ratio	95% CI	χ^2	df	p
Hazard Ratio and Proportionality	1.382	(1.191, 1.604)	0.009	1	0.924

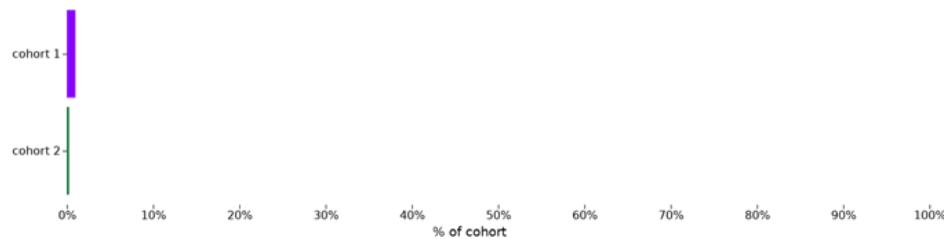


410 patients in Cohort 1 and 310 patients in Cohort 2 were excluded from results because they had the outcome prior to the time window.

2 HCC

Risk analysis excluding patients with outcome prior to the time window

Cohort		Patients in cohort	Patients with outcome	Risk	
1	Hispanic MASH UTMB	4,060	40	0.010	
2	Non-Hispanic MASH UTMB	4,070	10	0.002	
			95% CI	z	p
Risk Difference		0.007	(0.004, 0.011)	4.264	0.000
Risk Ratio		4.010	(2.008, 8.007)	N/A	N/A
Odds Ratio		4.040	(2.018, 8.089)	N/A	N/A

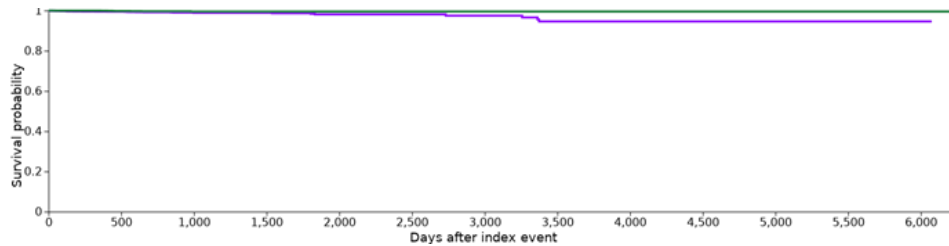


30 patients in Cohort 1 and 30 patients in Cohort 2 were excluded from results because they had the outcome prior to the time window.

Kaplan - Meier survival analysis excluding patients with outcome prior to the time window

Cohort		Patients in cohort	Patients with outcome	Median survival (days)	Survival probability at end of time window
1	Hispanic MASH UTMB	4,060	40	--	94.61%
2	Non-Hispanic MASH UTMB	4,070	10	--	99.53%
		χ^2	df	p	
Log-Rank Test		11.979	1	0.001	

	Hazard Ratio	95% CI	χ^2	df	p
Hazard Ratio and Proportionality	3.409	(1.629, 7.134)	0.104	1	0.748



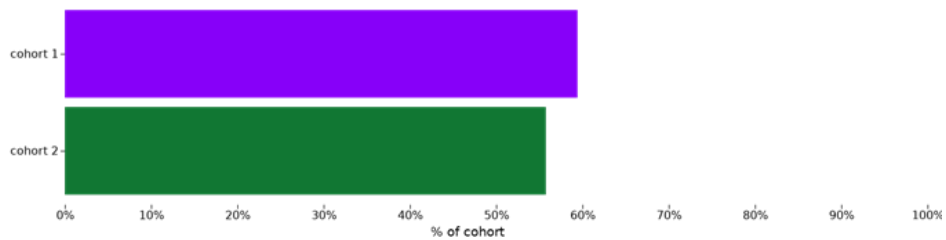
30 patients in Cohort 1 and 30 patients in Cohort 2 were excluded from results because they had the outcome prior to the time window.

3 T2DM

Risk analysis

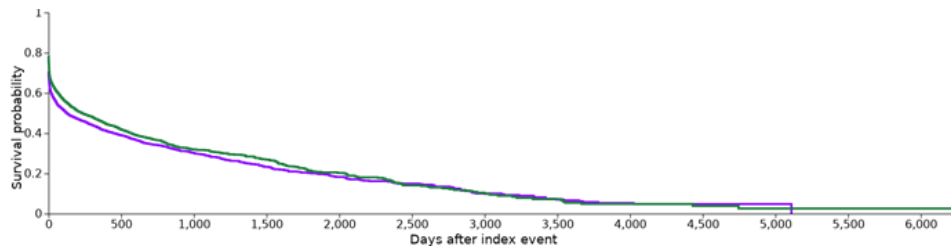
Cohort		Patients in cohort	Patients with outcome	Risk
1	Hispanic MASH UTMB	4,090	2,430	0.594
2	Non-Hispanic MASH UTMB	4,090	2,280	0.557

		95% CI	z	p
Risk Difference	0.037	(0.015, 0.058)	3.356	0.001
Risk Ratio	1.066	(1.027, 1.106)	N/A	N/A
Odds Ratio	1.162	(1.064, 1.269)	N/A	N/A



Kaplan - Meier survival analysis

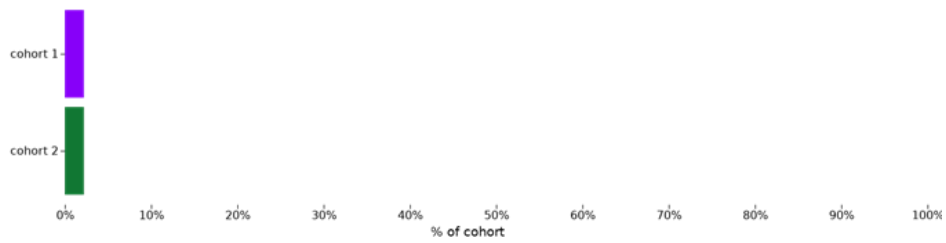
Cohort		Patients in cohort	Patients with outcome	Median survival (days)	Survival probability at end of time window	
1	Hispanic MASH UTMB	4,090	2,430	126	0.00%	
2	Non-Hispanic MASH UTMB	4,090	2,280	233	2.57%	
		χ^2	df	p		
Log-Rank Test		15.910	1	0.000		
		Hazard Ratio	95% CI	χ^2	df	p
Hazard Ratio and Proportionality		1.126	(1.064, 1.193)	8.798	1	0.003



4 All-Cause Mortality

Risk analysis

Cohort		Patients in cohort	Patients with outcome	Risk	
1	Hispanic MASH UTMB	4,090	90	0.022	
2	Non-Hispanic MASH UTMB	4,090	90	0.022	
			95% CI	z	p
Risk Difference		0	(-0.006, 0.006)	0	1
Risk Ratio		1	(0.749, 1.335)	N/A	N/A
Odds Ratio		1	(0.744, 1.344)	N/A	N/A



Kaplan - Meier survival analysis

Cohort		Patients in cohort	Patients with outcome	Median survival (days)	Survival probability at end of time window
1	Hispanic MASH UTMB	4,090	90	--	61.92%
2	Non-Hispanic MASH UTMB	4,090	90	--	92.65%

	χ^2	df	p
Log-Rank Test	0.177	1	0.674

	Hazard Ratio	95% CI	χ^2	df	p
Hazard Ratio and Proportionality	0.937	(0.692, 1.269)	1.394	1	0.238

