

World Journal of *Transplantation*

World J Transplant 2019 August 26; 9(4): 58-93



**EDITORIAL**

- 58** Blessing and a curse of outpatient management of delayed graft function
Blazel JW, Turk JA, Muth BL, Parajuli S

REVIEW

- 62** Histological and clinical evaluation of marginal donor kidneys before transplantation: Which is best?
Salvadori M, Tsalouchos A

MINIREVIEWS

- 81** Pancreatic transplantation: Brief review of the current evidence
Aref A, Zayan T, Pararajasingam R, Sharma A, Halawa A

ABOUT COVER

Editorial Board Member of *World Journal of Transplantation*, Anna Mrzljak, FEBG, MD, PhD, Assistant Professor, Department of Gastroenterology, Liver Transplant Centre, University Hospital Merkur, School of Medicine, University of Zagreb, Zagreb 10000, Grad Zagreb, Croatia

AIMS AND SCOPE

World Journal of Transplantation (*World J Transplant*, *WJT*, online ISSN 2220-3230, DOI: 10.5500) is a peer-reviewed open access academic journal that aims to guide clinical practice and improve diagnostic and therapeutic skills of clinicians.

The *WJT* covers topics concerning organ and tissue donation and preservation; tissue injury, repair, inflammation, and aging; immune recognition, regulation, effector mechanisms, and opportunities for induction of tolerance, thoracic transplantation (heart, lung), abdominal transplantation (kidney, liver, pancreas, islets), transplantation of tissues, cell therapy and islet transplantation, clinical transplantation, experimental transplantation, immunobiology and genomics, and xenotransplantation. The current columns of *WJT* include editorial, frontier, diagnostic advances, therapeutics advances, field of vision, mini-reviews, review, topic highlight, medical ethics, original articles, case report, clinical case conference (Clinicopathological conference), and autobiography.

INDEXING/ABSTRACTING

The *WJT* is now abstracted and indexed in PubMed, PubMed Central, China National Knowledge Infrastructure (CNKI), and Superstar Journals Database.

RESPONSIBLE EDITORS FOR THIS ISSUE

Responsible Electronic Editor: *Lu-Lu Qi*
Proofing Production Department Director: *Xiang Li*

NAME OF JOURNAL

World Journal of Transplantation

ISSN

ISSN 2220-3230 (online)

LAUNCH DATE

December 24, 2011

FREQUENCY

Irregular

EDITORS-IN-CHIEF

Sami Akbulut, Vassilios Papalois, Maurizio Salvadori

EDITORIAL BOARD MEMBERS

<https://www.wjnet.com/2220-3230/editorialboard.htm>

EDITORIAL OFFICE

Jin-Lei Wang, Director

PUBLICATION DATE

August 26, 2019

COPYRIGHT

© 2019 Baishideng Publishing Group Inc

INSTRUCTIONS TO AUTHORS

<https://www.wjnet.com/bpg/gerinfo/204>

GUIDELINES FOR ETHICS DOCUMENTS

<https://www.wjnet.com/bpg/GerInfo/287>

GUIDELINES FOR NON-NATIVE SPEAKERS OF ENGLISH

<https://www.wjnet.com/bpg/gerinfo/240>

PUBLICATION MISCONDUCT

<https://www.wjnet.com/bpg/gerinfo/208>

ARTICLE PROCESSING CHARGE

<https://www.wjnet.com/bpg/gerinfo/242>

STEPS FOR SUBMITTING MANUSCRIPTS

<https://www.wjnet.com/bpg/GerInfo/239>

ONLINE SUBMISSION

<https://www.f6publishing.com>



Histological and clinical evaluation of marginal donor kidneys before transplantation: Which is best?

Maurizio Salvadori, Aris Tsalouchos

ORCID number: Maurizio Salvadori (0000-0003-1503-2681); Aris Tsalouchos (0000-0002-8565-4059).

Author contributions: Salvadori M and Tsalouchos A contributed equally to the manuscript; Salvadori M designed the study, performed the last revision and provided answers to the reviewers; Tsalouchos A collected the data from literature; Salvadori M and Tsalouchos A analyzed the collected data and wrote the manuscript.

Conflict-of-interest statement: Maurizio Salvadori and Aris Tsalouchos do not have any conflict of interest in relation to the manuscript.

Open-Access: This article is an open-access article which was selected by an in-house editor and fully peer-reviewed by external reviewers. It is distributed in accordance with the Creative Commons Attribution Non Commercial (CC BY-NC 4.0) license, which permits others to distribute, remix, adapt, build upon this work non-commercially, and license their derivative works on different terms, provided the original work is properly cited and the use is non-commercial. See: <http://creativecommons.org/licenses/by-nc/4.0/>

Manuscript source: Invited manuscript

Received: March 6, 2019

Peer-review started: March 8, 2019

First decision: April 16, 2019

Revised: May 21, 2019

Accepted: July 30, 2019

Maurizio Salvadori, Department of Transplantation Renal Unit, Careggi University Hospital, viale Pieraccini 18, Florence 50139, Italy

Aris Tsalouchos, Nephrology and Dialysis Unit, Saints Cosmas and Damian Hospital, Via Cesare Battisti, Pescia (PT) 2-51017, Italy

Corresponding author: Maurizio Salvadori, MD, Professor, Department of Transplantation Renal Unit, Careggi University Hospital, viale Pieraccini 18, Florence 50139, Italy. maurizio.salvadori1@gmail.com

Telephone: +39-55-597151

Fax: +39-55-597151

Abstract

Organ shortage represents one of the major limitations to the development of kidney transplantation. To increase the donor pool and to answer the ever increasing kidney request, physicians are recurring to marginal kidneys as kidneys from older donors, from hypertensive or diabetic donors and from non-heart beating donors. These kidneys are known to have frequently a worse outcome in the recipients. To date major problem is to evaluate such kidneys in order to use or to discard them before transplantation. The use of such kidneys create other relevant question as whether to use them as single or dual transplant and to allocate them fairly according transplant programs. The pre-transplant histological evaluation, the clinical evaluation of the donor or both the criteria joined has been used and according the time each criterion prevailed over the others. Aim of this review has been to examine the advantages and the drawbacks of any criterion and how they have changed with time. To date any criterion has several limitations and several authors have argued for the development of new guidelines in the field of the kidney evaluation for transplantation. Several authors argue that the use of omic technologies should improve the organ evaluation and studies are ongoing to evaluate these technologies either in the donor urine or in the biopsies taken before transplantation.

Key words: Kidney evaluation; Pre-transplant biopsies; Kidney donor evaluation; Kidney risk profile index; Omic technologies; Deceased donor score; Donor risk score

©The Author(s) 2019. Published by Baishideng Publishing Group Inc. All rights reserved.

Core tip: With the extension of donor pool to high risk donors, the kidney pre-transplant

Article in press: July 30, 2019

Published online: August 26, 2019

P-Reviewer: Akbulut S, Boteon YL, Cantarovich F, Hibberd AD, Hilmi I, Gonzalez F, Sureshkumar K

S-Editor: Wang JL

L-Editor: Filipodia

E-Editor: Qi LL



evaluation became mandatory. Different criteria have been used, each of them with advantages and limitations. Probably the use of pre-transplant kidney biopsies in those kidneys coming from donors with the highest profile index seem to give the better results. These could be improved applying omic technologies either to donor urine or to pre-transplant biopsies. However the application of omic technologies is time consuming and not everywhere applicable. Several studies on these technologies are to date ongoing, but their results are yet not known.

Citation: Salvadori M, Tsalouchos A. Histological and clinical evaluation of marginal donor kidneys before transplantation: Which is best? *World J Transplant* 2019; 9(4): 62-80

URL: <https://www.wjgnet.com/2220-3230/full/v9/i4/62.htm>

DOI: <https://dx.doi.org/10.5500/wjt.v9.i4.62>

INTRODUCTION

To date, organ shortage represents one of the major limitations to the development of kidney transplantation.

To increase the donor pool many transplant programs accept kidneys from the so-called extended criteria donors (ECDs)^[1,2]. Kidneys from the ECD pool are known to have worse outcomes in recipients with a higher rate of delayed graft function (DGF), primary non function (PNF), and reduced function of the allograft and reduced graft survival^[3]. The main challenge is to evaluate such kidneys before transplantation either for a better and fair allocation or for discarding the kidney in the case of a very poor evaluation of the offered kidney.

Several factors related to the donors are known to influence the post-transplant outcomes. **Figure 1** identifies which donor, procurement and graft characteristics principally influence the outcomes. They may be divided into clinical and histological factors and factors related to the donor and related to the offered kidney and to the procurement management.

Historically, the evaluation of the kidneys from ECDs has been made histologically by the so-called zero-time biopsy^[4], by clinical evaluation of the donor by different kidney allocation scores or by a combination of histological and clinical parameters.

Additionally, it should be highlighted that the need of a clear evaluation of the “so called” marginal donors became a must with the increased use of such kidneys. With time the experience documented that several kidneys from ECD pool performed well, while other kidneys labeled as standard criteria donors (SCD) did not perform well. Hence, the opportunity of a safe evaluation also for SCD. De facto the recent kidney donor risk index (KDRI) automatically offers the evaluation for any kidney.

The aim of this review is to describe the aforementioned evaluation criteria of ECD kidneys and to describe how they have changed with time.

SELECTION CRITERIA OF THE ARTICLES INCLUDED IN THIS REVIEW AND THEIR DRAWBACKS

The criteria to evaluate the kidneys have been histological, clinical and mixed histological-clinical. We have searched for all the papers concerning these points. The main studies concerning the most important scoring systems are shown on **Table 1**. With the exception of the two single centre studies as Maryland Aggregate Pathology Index (MAPI) and the Irish nomogram, all the studies considered included a large number of patients with the limitation to be retrospective in the attempt to validate the original findings. Clearly, in this review are also included articles documenting the drawbacks of the different scoring systems and these articles may include a limited number of patients. Similarly, the studies evaluating the omics on the renal biopsies or on the donor urine have a limited number of patients.

HISTOLOGICAL EVALUATION OF DONOR KIDNEYS

By 1999, Karpinski *et al*^[5] considering that kidneys from high risk donors had worse outcomes in the recipient after transplantation tried to establish which donor or

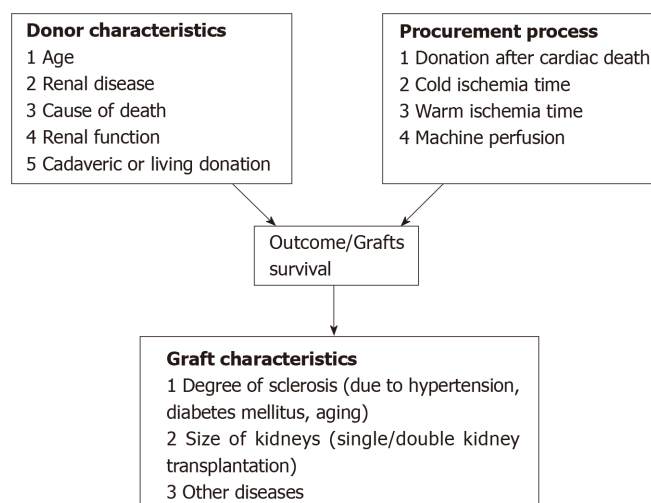


Figure 1 Main donor, procurement and graft related factors influencing the post-transplant outcomes.

kidney variables were most relevant to these poor outcomes. For high donor risk, they considered donation after cardiac death donors, donors over 55 years of age, donors with a history of hypertension or diabetes, and donors with abnormal kidney anatomy or abnormal renal function^[6]. The study found that a low calculated creatinine clearance (CrCl) and donor kidney pathology were the main predictors of worse outcomes

In particular, the donor renal pathology was scored 0-3 in each of four distinct aspects: Glomerulosclerosis, interstitial fibrosis, tubular atrophy and vascular disease (Table 2). Previous studies have documented the relevance of pre-implantation histological findings on recipient outcomes^[7-9]. None of these studies had been concordant, and the study of Karpinski *et al.*^[5] may be considered a pioneering study documenting the relevance of the pathology score over the transplant outcomes.

Since the study of Karpinski *et al.*^[5], several studies have documented the relevance of the pathology score of donor kidneys over the outcomes, while other studies did not find a similar usefulness of the pathology score.

One of the most important studies in favor of the pathology score has been the study of Remuzzi *et al.*^[10]. According to this study, the pathology score allows transplant kidneys with a score up to 3 to be used as single kidneys, while kidneys with a score from 4 to 6 are better allocated as dual transplants and kidneys with a score of 7 or higher should be discarded.

Additionally, the study documents the importance of the pre-transplant renal biopsy for donors over 60 years when comparing the renal outcomes with and without biopsy (Figure 2).

In a different study, Mancilla *et al.*^[11] suggested the utility of zero-time biopsy in the case of living donor kidneys, particularly for donors with borderline renal function or with a history of familial renal disorders^[12,13]. In a study from Kayler *et al.*^[14] a correlation of histological findings on pre-implantation biopsy with kidney graft survival was also found but was restricted to vascular lesions, while glomerulosclerosis and low-grade interstitial fibrosis did not have statistical significance.

Based on 371 pre-transplant biopsies and correlating the findings with post-transplant outcomes, Munivenkatappa *et al.*^[15] developed the MAPI. In the study, glomerulosclerosis, glomerular size and periglomerular fibrosis in addition to vascular pathology and arteriolar hyalinosis were considered in developing the MAPI score (Table 3). The authors found that the five-year actuarial graft survival rate was related to the MAPI scoring (Figure 3) and that the MAPI score at the multivariate analysis correlated with the risk of graft failure better than any other clinical parameter (Table 4). This study suddenly received several comments, which brought up several unanswered questions about the relevance of pre-transplant biopsies in predicting post-transplant outcomes. Many of these questions were raised by Nickeleit^[16].

One point that is not clarified is whether wedge specimens or needle biopsies should be used. This issue is well described in a further paper^[17] that considers wedge biopsies to be safer and superior to core biopsies in finding significant findings.

Another point is whether frozen or paraffinized sections should be used, even if the original MAPI score found paraffinized sections to be more reliable.

Table 1 Descriptive table of selected clinical scoring system

Score	Authors	Variables included in risk score	Score grades	Outcome
Expanded criteria donor	Port <i>et al</i> ^[58] , 2002	Donor age	SCD	Relative risk of graft failure compared to SCD
		Cerebrovascular accident as cause of death	ECD	RR>1.7
		Serum creatinine> 1.5mg/dL		
		History of hypertension		
Deceased donor score	Nyberg <i>et al</i> ^[65] , 2003	Age		5-year graft survival
		History of hypertension	A (0-9 points)	Grade A 82%
		Creatinine clearance	B (10-19 points)	Grade B 79%
		HLA mismatch	C (20-29 points)	Grade C 72%
		Cause of death	D (30-39 points)	Grade D 65%
Donor risk score (DRS)	Schold <i>et al</i> ^[67] , 2005	Donor risk factors		5-year graft survival
		Race	I	Grade I 76.7%
		Age	II	Grade II 73.6%
		History of hypertension	III	Grade III 66.3%
		History of diabetes	IV	Grade IV 54.8%
		Cause of death	V	Grade V 47.6%
		History of hypertension		
		History of diabetes		
		Cause of death		
		HLA-Dr mismatch		
		CMV mismatch		
		Cold ischemia time		
DGF nomogram	Irish <i>et al</i> ^[70] , 2003	Donor risk factors	Continuous point score	Delayed graft function
		Age		
		Serum creatinine		
		History of hypertension		
		Cause of death		
		Donor after cardiac death		
		Recipient risk factors		
		Peak PRA		
		Race		
		Gender		
		History of diabetes mellitus		
		Previous transplant		
		Pretransplant dialysis		
		Pretransplant transfusions		
		Combined transplantation		
		HLA mismatch		
		Cold ischemia time		
KDRI	Rao <i>et al</i> ^[71] , 2009	Donor risk factors	KDRI quintile	5-year graft survival
		Age	0.45-0.79	82%
		Race	0.80-0.96	79%
		Height	0.97-1.15	NA
		Weight	1.16-1.45	NA
		History of hypertension	>1.45	63%
		History of diabetes		
		Cause of death		
		Serum creatinine		
		Hepatitis C		
		Donation after cardiac death		
		HLA-B mismatch		

Donor-only KDRI	OPTN ^[72] , 2014	HLA-DR mismatch	
		Cold ischemia time	
		Double or <i>en bloc</i> transplant	
		Donor risk factors	5-year graft survival
		Age	<0.6
		Race	0.61-0.79
		Height	0.80-0.99
		Weight	1.00-1.19
		History of hypertension	1.20-1.59
		History of diabetes	1.60-1.99
		Cause of death	>1.99
		Serum creatinine	
		Hepatitis C	
		Donation after cardiac death	

ECD: Expanded criteria donor; KDRI: Kidney donor risk index; OPTN: The Organ Procurement and Transplantation Network; SCD: Standard criteria donor.

Additionally, it should be better defined when zero-time biopsies should be taken: before or after reperfusion. Biopsy time is relevant in detecting the complement activation that is predictive of early antibody mediated rejection^[18].

An important point, not well considered by the MAPI score is how the lesions should be scored and whether the Banff criterion is appropriate^[19]. This point is relevant for comparing zero-time biopsies with subsequent post-transplant biopsies. Nickeleit^[16]'s conclusions were that much remains to be determined about zero-time biopsies and that consensus guidelines remain to be defined.

Recommendations on these points have been given by two German workshops and described by Pisarski *et al*^[20] in 2016. The German recommendations advocate a detailed assessment of the findings and do not agree with the recommendations of the Interpretation Biopsy Banff Working Group^[21], whose approach is adopted for a general pathologist, without specific training in the field.

The issue of an expert pathologist was addressed in 2012 in a study of the pre-implantation biopsies in the Organ Procurement Organization (OPOS) that found a lack of concordance among OPOS pathologists^[22]. The lack of a correlation between the findings of on-call pathologists and the lack of association between their findings and the transplant outcomes is highlighted by two papers^[23,24] that advocate for specific training in renal pathology to optimize the histological evaluation of donor kidneys. It could also be argued that a renal pathologist "per se" could not be expert enough in evaluating such biopsies. Probably a specific training should be the best solution.

By 2011, Mueller *et al*^[25], reviewing several studies on histopathology-based variables at zero-time biopsies, highlighted the limitations due to sampling errors, confounding clinical variables, and inter-observer variability^[26,27] and advocated for a validated approach for the analysis of pathology findings. In particular, they advocate for the use of omic technologies such as proteomics, transcriptomics and metabolomics that could have the potential to improve the significance of the histological findings. Table 5 highlights the principal studies that were conducted until 2011^[28,39].

A study from Krol *et al*^[40], documented that the apoptosis of tubular epithelial cells in pre-implantation biopsies is related to DGF. Their findings were confirmed by another study^[41] that found a relationship between high *BAX/BCL2* expression in pre-implantation biopsies and DGF, confirming that apoptosis-related gene expression levels are predictors of DGF.

A recent study^[42] confirmed that zero-time biopsies in ECDs showed a significant increase in the transcripts of *MCP-1*, *RANTES*, *TGF beta* and *IL 10*, documenting a higher gene expression of inflammatory cytokines in ECDs that could predict the post-transplant outcome.

In recent years, several studies, often retrospective, and several reviews and meta-analyses did not confirm the utility of zero-time biopsy in allocating or discarding ECD kidneys. Wang *et al*^[43] reviewed 47 studies published between 1994 and 2014, where each study included pre-transplant biopsies format least 50 donors and compared the histological findings with post-transplant outcomes. Overall, 15 scoring systems were proposed by the studies, but none were able to correlate with post-transplant outcomes.

Table 2 Histological score according Karpinski

Histological score	
Glomerular score	0 = no globally sclerosed glomeruli 1 = < 20% global glomerulosclerosis 2 = 20-50% global glomerulosclerosis 3 = > 50% global glomerulosclerosis
Tubular score	0 = absent 1 = < 20% of tubules affected 2 = 20-50% of tubules affected 3 = > 50% of tubules affected
Interstitial score	0 = absent 1 = < 20% of cortical parenchyma replaced by fibrous connective tissue 2 = 20-50% of cortical parenchyma replaced by fibrous connective tissue 3 = > 50% of cortical parenchyma replaced by fibrous connective tissue
Vascular score	0 = absent 1 = increased wall thickness but to a degree that is less than the diameter of the lumen 2 = wall thickness that is equal or slightly greater than the diameter of the lumen 3 = wall thickness that far exceeds the diameter of the lumen, with extreme narrowing

Naesens^[44] reviewed the problems and the utility of zero-time biopsy and highlighted that the major problems were the wedge *vs* core needle biopsy^[45,46]; frozen *vs* paraffin-embedded tissue^[47,48]; pathologist's experience^[23,24]; different composite histological scoring such as the Pirani score^[49], Chronic Allograft Damage Index (CADI)^[50], and Donor Score^[23]; and the lack of utilizing hard clinical end-points in evaluating graft and recipient outcomes. The author concluded that zero-time biopsies are not useful for assigning or discarding kidneys or improving dual kidney transplantation programs. The author recognizes that the molecular phenotype in pre-transplant biopsies could be useful in donor selection and in peri-transplant management even if the time required could make such a procedure difficult^[51-54].

Two recent Italian studies on the utility of pre-implantation biopsy in allocating ECD kidneys^[4,55] concluded that histological evaluation was not superior to donor clinical evaluation in allocating ECD kidneys either as a single kidney or as a dual kidney transplant. The authors concluded that, according to their experience, the histological score poorly evaluates the donor kidney quality. Accordingly, the use of histological criteria to assign as single or dual kidneys does not seem to offer advantages over the evaluation made on clinical basis.

A Banff Pre-implantation Biopsy Working Group has been established to develop guidelines for the interpretation of pre-implantation renal biopsies^[56]. The last working group meeting stated that to date, histological parameters are poorly correlated with post-transplant outcomes and that remain significant limitations in understanding the role of pre-implantation biopsies.

Recently, Carpenter *et al*^[57] from Columbia University examined their experience and compared procurement biopsies with reperfusion paraffin-embedded biopsies and with post-transplant biopsies. All the findings were then correlated with allograft failures and patient deaths. No agreement has been found between frozen procurement biopsies and paraffin-embedded biopsies, and frozen procurement biopsies were poorly correlated with post-transplant biopsies and the hard end-point considered.

COMBINED CLINICAL AND HISTOLOGICAL EVALUATION OF DONOR KIDNEYS

A different approach to evaluating ECD kidneys has been to combine histological findings with clinical donor-related parameters. The latter have been identified since the publication of the study by Port *et al*^[58]. In a study in 2001, Verran *et al*^[59] found that the combination of abnormal biopsy findings with donor age and donor cardiovascular disease and hypertension was associated with poor outcomes.

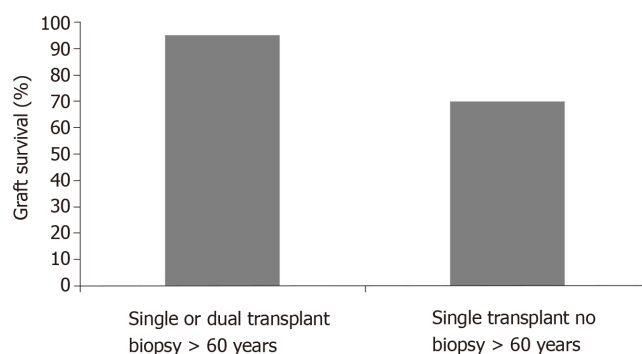


Figure 2 36 month graft survival for donors over 60 years according pre-transplant biopsy.

In an Italian study^[60], donor kidneys were assigned with good results according to donor renal function [estimated glomerular filtration rate (eGFR) under or over 50 mL/min] and the previously mentioned Karpinski score.

The largest study that evaluated the predictive value of clinical and histological findings taken together was conducted by Anglicheau *et al.*^[61]. The authors, evaluating 313 kidney transplants from donors aged >50 years, developed the so-called Anglicheau score. The best predictive parameters were a history of hypertension in the donor, serum creatinine levels under or over 1.5 mg/dL and glomerulosclerosis less than or over 10%. These parameters in the multivariate analysis significantly correlated with renal function at 1 year post-transplantation.

A different study^[62] recognizes the utility of zero-time biopsy, but, as none of the histological variables and scores provided a good prediction of post-transplant outcomes, the histological findings need to be integrated with all the known donor-related clinical parameters.

Finally, a very recent Spanish study^[63] highlights the utility of evaluating the pre-transplant donor biopsies in the donor with the highest kidney donor profile index (KDPI) that is based on several deceased donor variables.

CLINICAL EVALUATION OF DONOR KIDNEYS

In an attempt to improve the evaluation of the donor kidneys, principally in the US, where the donor kidney evaluation is strictly connected with their discard or their allocation to different recipients according to national programs, several clinical donor quality scoring systems have been performed.

The first one was the characterization and a better definition of ECDs. According to the report of the Kidney Working Group^[1], kidneys belonging to the ECD were kidneys with a relative risk of graft failure of 1.7 with respect to standard kidneys. These kidneys are characterized by a donor age older than 59 years with two of the following characteristics: cerebrovascular accident as cause of death, history of hypertension or creatinine over 1.5 mg/dL^[2].

Nyberg *et al.*^[64] evaluated 241 consecutive cadaveric renal transplants and gave a score based on recognized clinical factors responsible for DGF. These factors were age, cause of death, history of hypertension, diabetes mellitus, creatinine clearance and presence in the donor of renal artery stenosis. A scoring system was developed from these seven donor variables, allowing stratification of cadaver kidneys into four classes (grades A, B, C, D). Univariate and multivariate analyses were performed, and a significant decline in early renal function was observed with an increase in the score. Additionally, the multivariate analysis had a better prognostic value with respect to each single variable considered in the univariate analysis.

Later, Nyberg *et al.*^[65], in an attempt to validate his scoring system, applied the analysis to a wider population, including 34324 transplant patients from the UNOS registry in the period between 1994 and 1999. This study allowed us to evaluate the feasibility of the score on a larger follow-up. The study allowed the recognition of five clinical variables as predictive of a poorer outcome [age, cause of death, history of hypertension, creatinine clearance and human leukocyte antigen (HLA) mismatch]. This score was called the Deceased Donor Score or Nyberg score and was able to predict renal function at 12 mo and graft survival at 6 years (Figure 4).

A further study by the same author^[66] also confirmed these data for kidneys

Table 3 Maryland Aggregate Pathology Index scoring system for pre-transplant kidney biopsies

	HR (95%CI)	P value	MAPI points	
			Absent	Present
Arteriolar hyalinosis	3.93 (2.02-7.64)	<0.0001	0	4
PGF (any)	4.09 (1.65-10.14)	0.002	0	3
Scar (any)	2.58 (1.24-5.38)	0.01	0	3
GS > 15%	1.87 (1.17-2.99)	0.009	0	2
WLR interlobular arteries > 0.5	2.05 (1.21-3.47)	0.008	0	2

MAPI: Maryland Aggregate Pathology Index; WLR: Wall to lumen ratio; CI: Confidence interval.

receiving machine reperfusion.

To further improve clinical factors able to evaluate kidney status and to predict outcomes after transplantation, Schold *et al*^[67] studied different clinical variables that were applied to transplants included in the National Scientific Transplant Registry from 1996 to 2002.

The variables were age, race, and history of hypertension, diabetes mellitus, and cause of death, cold ischemia time, HLA mismatch, and immunological status and CMV status. This was called the Donor Risk Score and allowed for the calculation of the multivariate estimates for graft loss by donor grade (Figure 5).

A further study^[68] compared the different clinical risk scores and documented that the Donor Risk Score was better associated with subsequent allograft function.

ECD-KDRI-KDPI

As already mentioned, by 2002, in an attempt to improve the utilization of marginal deceased donor kidneys, the concept of ECD *vs* SCD was introduced^[1,2]. With time this dichotomy (SCD/ECD) demonstrated several drawbacks. Indeed, the experience documented that several kidneys labeled as ECD performed well, while other kidneys labeled as SCD did not perform well^[69]. To improve these limitations other different scoring systems have been attempted. The donor score of Nyberg and the donor risk score of Schold have been described. Additionally, Irish *et al*^[70] applied a nomogram aimed at predicting the risk of DGF based on 16 donor and recipient risk factors. Moore *et al*^[68] documented that Schold's donor risk score is the scoring system that best predicts graft outcomes, but the need still remains for a simple and validated system that applies to the entire donor population viewed as a continuum and not in a dichotomous fashion.

In 2009, Rao *et al*^[71] analyzed 69440 deceased donor adult transplants registered in the Scientific Registry of Transplant Recipients (SRTR) and proposed a new continuous KDRI for deceased donor kidneys combining donor and transplant variables.

Rao's KDRI included 14 donor and transplant factors, each associated with shorter graft survival. Table 6 shows the mentioned risk factors.

The KDRI is a continuous spectrum for any kind of donor (ECD and SCD) and allows for dividing the donor population into quintiles based on their KDRI. By the end of 2014, the KDRI was implemented by the OPTN^[72]. Indeed, as some transplant factors are not known at the time of transplant, the donor-only KDRI based on 10 donor factors has been implemented.

All the mentioned donor scoring systems are shown in Table 1^[73]. Woodside *et al*^[74] examined the SRTR data from 2002 to 2010, and applying the KDRI, they found that kidneys belonging to the same KDRI quintile had similar outcomes independently of their belonging to ECD or SCD. However, ECD kidneys had a higher discard rate.

The use of the KDRI was further validated by several studies. Jun *et al*^[75] examined the use of the KDRI in donors with acute kidney injury (AKI) and found a good correlation between KDRI quintiles and graft outcomes.

A different study^[76] documented that the KDRI was a good prognostic tool for graft outcomes in deceased donor kidney transplantation with a short cold ischemia time. In this study, the KDRI correlated with renal function at 1 year, and a high KDRI was associated with a high risk of graft failure.

Recently, a Spanish study validated the usefulness of the KDRI in a European population^[77]. The study evaluated 144 renal transplants. All kidneys transplanted

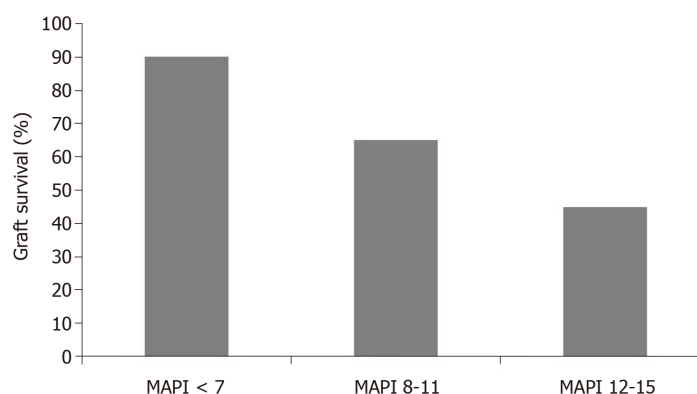


Figure 3 Five years graft survival for the study population according low, intermediate and high Maryland Aggregate Pathology Index score ranges. MAPI: Maryland Aggregate Pathology Index.

were evaluated by the KDRI and biopsied. The aims of the study were to verify the concordance between the KDRI and the histological findings and to validate the prognostic value of the KDRI for transplant outcomes. The study concluded that there was a poor concordance between the KDRI and histological score and that the KDRI had a good prognostic value.

Strictly connected with the KDRI is the KDPI. The KDPI represents the relative risk of graft failure in the case of a particular deceased donor compared to a reference donor. The KDPI was introduced in 2014 in the US^[78] and is derived by ranking the KDRI on a scale of 0-100% with reference to a donor cohort in the OPTN. It is useful and is represented by a number that helps in deciding the allocation of a specific organ^[79]. The KDRI and KDPI are strictly related.

These scoring systems have advantages over the ECD system because they represent a continuum, are based on 10 donor factors and represent a measure of donor quality.

Limitations of the KDRI and KDPI are represented by the fact that they do not include all of the donors' factors that could impact the graft outcome. Additionally, the KDPI is a measure of the donor and is not specific for each kidney taken individually.

The KDPI is useful for introducing the concept of the so-called longevity matching. The concept consists of allocating kidneys with a higher KDPI to patients on dialysis with a lower life expectancy. A retrospective study^[80] documented those patients older than 50 years or with a long waiting list time who were transplanted with kidneys with a high KDPI had a better survival than similar patients remaining on dialysis. This is particularly evident for patients older than 70 years^[81]. Notwithstanding, a German study^[82] reporting the experience of transplanting kidneys with a high KDPI observed that poor kidney quality, even when matching donors and recipients is the main factor responsible for poor outcomes. Several studies have evaluated the utility of the KDPI even outside of the US.

In a retrospective study, Lehner *et al*^[83] evaluated the utility of the KDPI in almost 1000 European kidney transplants. The study found rather good outcomes in the case of donors with a very high KDPI. A Spanish study^[84] evaluated the KDPI score on 389 transplants. The study documented that only the KDPI correlated with the risk of graft failure. This study also documented the utility of the KDPI measure in a cohort of European patients.

To further improve the KDPI, a retrospective study^[85] was conducted in the US. The study evaluated the KDPI in adult transplant recipients in the OPTN/UNOS database from 2000 to 2015. This study, while validating the usefulness of the KDPI, found that terminal serum creatinine of the donor (one of the components of the KDPI) is not a useful variable.

Another European study^[86] analyzed 1,305 kidney transplants. The study retrospectively applied the KDPI in 889 deceased donors and the living donor kidney profile index (LKDPI) in 416 living donors using the LKDPI realized by a US study for living donation^[87]. The European study was able to validate both the KDPI and LKDPI.

A major concern is what to do with donor kidneys with very a high KDPI (>80%).

In the US, the discard rate of these kidneys is approximately 50%. However, the allocation of kidneys with a KDPI higher than 80% in patients older than 60 years results in a lower patient mortality compared to patients who remain on the waiting list^[88]. Indeed, several kidneys with a KDPI higher than 80% are viable. A recent

Table 4 Cox Multivariate analysis showing association of Maryland Aggregate Pathology Index score and clinical parameters to risk of graft failure

	HR (95%CI)	P value
MAPI	1.21 (1.05-1.40)	0.008
Donor age	1.03 (1.00-1.07)	0.096
Cold ischemia (h)	3.66 (0.77-17.40)	0.102
Donor history of hypertension	1.62 (0.67-3.97)	0.287
Donor terminal creatinine > 1.5 mg/dL	1.34 (0.43-4.18)	0.611
CVA as cause of donor death	0.98 (0.35-2.73)	0.973

CVA: Cerebrovascular accident; MAPI: Maryland Aggregate Pathology Index.

study^[89] evaluated the 1-year eGFR and graft failure for kidneys transplanted with a KDPI higher than 80%. The discard of such kidneys had been decided with the help of a pre-Tx kidney biopsy, renal resistance and kidney injury biomarker levels. The 1-year eGFR was low but satisfying. The authors request the use of new biological tools for a proper evaluation of these kidneys.

An Italian multicenter study tried to reduce the discard rate of kidneys with a KDPI higher than 80% using pre-transplant kidney biopsy for these kidneys^[90]. The discard rate was reduced from 50% to 15%-37% according to the KDPI. The 1-year eGFR was lower for these marginal kidneys, but the graft survival was similar to that of standard kidneys. The study highlighted the utility of pre-transplant biopsy for kidneys with a very high KDPI.

Finally, a recently raised relevant question is whether the KDPI may be universally applied in allocating marginal kidneys or whether it is UNOS specific. A recent study from Ruggerenti *et al*^[91] documented the allocation and good graft survival of 37 renal transplants with donors with a KDPI between 96% and 100% after a pre-transplant biopsy. These kidneys should have been discarded according to the UNOS criteria^[92]. Similar findings have come from a previous study by Ekser *et al*^[93]. The 5-year graft survival was 91%, and the mean KDPI was 97%. More than 80% of these kidneys should have been discarded according to the UNOS^[94].

The question of UNOS specificity of the KDPI is examined in a recent study by Ruggerenti *et al*^[95]. According to the author, the difference in ethnicity may only partially explain the different results and the different discard rates of UNOS and several European studies^[96]. The author highlights the usefulness of pre-transplant biopsy for kidneys of donors with a very high KDPI.

In conclusion, the KDRI/KDPI represents an easy scoring system that could facilitate the decision to discard organs or allocate them in the best way.

According to several studies, the KDPI may also be applicable to European patients, even though this point is to date debated.

Based on the KDPI, the UNOS is implementing new allocation systems such as "longevity matching". Each candidate willing to participate in the "longevity matching" will receive an "estimated post-transplant survival score" (EPTS) and will receive a graft according to the matching KDPI/EPTS.

The allocation of kidneys with the highest KDPI is debated. Often, these kidneys are discarded^[97], but the use of pre-transplant biopsy may allow allocation of many of these kidneys, thus reducing the discard rate^[98].

MACHINE PERFUSION AND PERFUSATE BIOMARKERS

Hypothermic machine perfusion is increasingly used in deceased donor kidney transplantation, but the question still remains on how efficient are MP in assessing the quality of an organ?

One study evaluating the reasons for discarding 12536 ECD kidneys found that 15% of perfused kidneys were discarded partly based on high renovascular resistance (RR)^[99]. In a prospective study by Jochmans *et al*^[100] RR values of 302 MP kidneys were evaluated. The study conclusions were that RR as a standalone quality assessment tool cannot be used to predict the graft outcomes.

More recently, Parikh *et al*^[101] in a prospective observational cohort study examined the association between pump parameters and graft outcomes. They found an association between 1 h perfusate flow and DGF but with a border line value.

In conclusion, according the currently available data, there is a weak correlation

Table 5 Studies on molecular markers measured in 0-h biopsies (up to 2011)

Ref.	Pats	f/u	Findings/timing of biopsy-technology
Hoffmann <i>et al</i> ^[28] , 2002	24	1 h	IRI injury ass w increased adhesion, chemotaxis, apoptosis, monocyte recruitment/activation transcripts. Post-reperfusion/RT-PCR
Hauser <i>et al</i> ^[29] , 2004	36	1	Increased Communication, apoptosis, inflammation
Kainzet <i>al</i> ^[30] , 2004	10	1	DD kidneys distinctly different transcripts in the TI but not in the G compartment compared to LD. End of CIT/microarrays
Avihingsanon <i>et al</i> ^[31] , 2005	75	6	15 selected genes associated with outcomes, included DGF, REJ and 6 mofunction. Post-reperfusion/RT-PCR
Kainzet <i>al</i> ^[32] , 2007	31	12	Increased immunity, signal transduction, oxidative stress response associated with lower 1-year function
Park <i>et al</i> ^[33] , 2007	15	12	Increased inflammation and immune response at 1-year in uncomplicated grafts
Mas <i>et al</i> ^[34] , 2008	33	3	Increased immunity, inflammation and apoptosis genes associated with DGF. End of CIT/microarrays
Mueller <i>et al</i> ^[35] , 2008	87	12	Increased acute phase, complement, chemochines and reduced metabolism, transporters in DD versus LD, transcriptome identifies risk for DGF better than clinical ± histological markers. Post-reperfusion/ microarrays
Perco <i>et al</i> ^[36] , 2009	82	12	Increased immunity/ defense, communication, apoptosis in damaged kidneys, CADI score + clinic explained 14%, 3 biomarkers 28% of 1-year creatinine variability. End of CIT/ microarrays
Naesens <i>et al</i> ^[37] , 2009	28	36	Complement genes differ between LD and DD and are associated with early and late function. End of CIT and post-transplant/ microarrays
Bodonyi-Kovacs <i>et al</i> ^[38] , 2010	75	48	Pre-selected genes associated with 2-year graft function. Post-reperfusion/RT-PCR
Cravedi <i>et al</i> ^[39] , 2010	49	12	LDvs DD differ by inflammation, donor age and ITGB2 prognostic for 1-year function. Post-reperfusion/RT-PCR

f/u: Follow up in months; IRI: Ischemia-reperfusion injury; DD: Deceased donor; LD: Living donor; IGF: Immediate graft function; DGF: Delayed graft function; REJ: Rejection; CIT: Cold ischemia time; TI: Tubulointerstitial; G: Glomerular.

between perfusion parameters and graft outcomes and additional studies are needed.

FUTURE PERSPECTIVES AND EMERGING TECHNOLOGIES

All the scoring systems, either histological or clinical, need to be improved with the help of new tools. Indeed, several cited studies advocate for newest approach in the evaluation of donor kidneys. Nicleleit^[16] stated that new consensus guidelines remain to be defined on zero-time biopsies. Mueller *et al*^[25] highlighting the confounding variables, advocate for the use of omic technologies in the evaluation of kidney biopsies. This point is also highlighted by the Banff Pre-Implantation Biopsy Working Group^[56]. The usefulness of biomarkers in the evaluation of donor kidneys has also

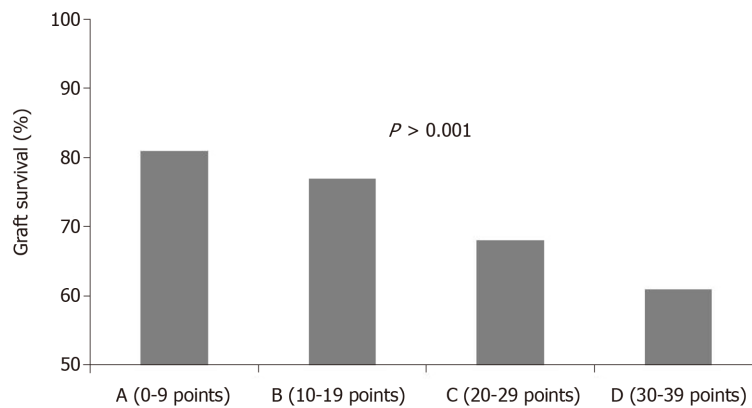


Figure 4 Grade of deceased donor kidney score significantly influenced graft survival at 6 years after transplantation.

been highlighted by another recent study^[90].

There are a number of emerging technologies to examine an organ at molecular level ranging from proteomics to metabolomics to transcription studies.

The most important study on proteomics is the study of Reese *et al*^[102] who examined the association between four different biomarkers and the post-transplant renal function. All the urine injury biomarkers strongly associated with donor AKI, but resulted of limited value in predicting DGF or early graft function

By using transcription analysis, Scian *et al*^[103] validated a set of three genes (*CCL5*, *CXCR4* and *ITGB2*) that was up regulated in kidneys with a low eGFR post-transplantation.

Gustafson *et al*^[104] still by transcription analysis found a set of 13 genes (Table 7) associated with allograft loss at two or three years after transplantation.

By metabolomics studies, Guy *et al*^[105] found in the perfusate of the hypothermic machine significant lower levels of gluconate, glucose, inosine and leucine in kidneys with DGF.

Finally, a novel technique able to recondition the kidney and to restore normal function prior to transplantation is the *ex vivo* normothermic perfusion. Phase I studies in ECD documented its safety and feasibility in clinical practice^[106].

Some studies are ongoing, but their results are to date unknown.

An important study aims to evaluate the relevance of molecular biomarkers of aging in the blood of donors. This study (Senesce Test) has been completed, but no results are available yet (NCT02335333)^[107]. Another NIH study coordinated by Yale University is testing biomarkers characteristic of renal injury in the urine of the donor and in the perfusion media (NCT01848249)^[108].

The PREDICTION study aims to evaluate the improvement in viability of marginal kidneys treated by pulsatile perfusion^[109].

CONCLUSION

The increase in the demand of kidneys for transplantation may only be satisfied with the increase in the use of marginal donors as kidneys from aged donors or with the use of donation after cardiac death donors.

Such kidneys need to be carefully evaluated either to be discarded or for a fair allocation.

The histological evaluation met several drawbacks as the time of the biopsy (pre or post reperfusion, the type of biopsy (wedge versus core biopsy), the pathologist involved in the evaluation (pathologist on-call or trained pathologist in this field).

Additionally, the difficulty of obtaining adequate histological analysis from pre implantation biopsies and the risk/benefit considerations to prolong cold ischemia time waiting for chronic histological abnormalities that often show poor correlation with clinical outcomes represents the most relevant drawback. All these drawbacks led to give more importance to the clinical evaluation of the donor. The KDRI/KDPI is an easily applicable scoring system, but this system also has its drawbacks especially in the evaluation of donors with the highest KDPI.

In the US, the use of KDPI led to a very high discard rate of the marginal donor kidneys, while other studies documented that several of these kidneys might be

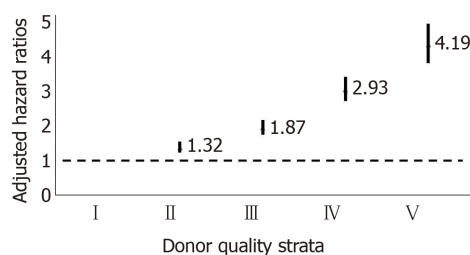


Figure 5 Multivariate estimates for graft loss by donor grade (Hazard ratio expressed as mean +/- confidence interval).

usefully transplanted.

Overall, is not easy to establish how many centers have taken part to the different scoring system as many of them are retrospective studies.

The elaboration of the Port scoring of standard criteria donors versus expanded criteria donors has been done comparing retrospectively 24756 SCD versus 4312 ECD from almost all the UNOS centers.

The MAPI has been done in a single center considering 371 transplants.

The Nyberg deceased donor score was made in three steps. In a first step 241 transplants were enrolled in two centers. Then in the attempt to give more strength to the scoring system, this was evaluated retrospectively on 34324 UNOS kidney transplants and in a third phase on 48952 UNOS kidney transplants.

The Donor risk score of Schold was evaluated retrospectively on 45850 data from SRTR.

The DGF nomogram of Irish was evaluated in a single center in UK on 217 prospective transplant patients.

Finally the KDRI of Rao was retrospectively evaluated on 69440 patients from SRTR. Subsequently the scoring was evaluated prospectively in different countries.

A hope for the future seems to come from the use of biomarkers. However, to date the use of urine biomarkers offers discordant results and does not provide sufficient power to be used in the kidney evaluation.

According recent studies, the use of pre-implantation biopsy has been shown to have its major utility in the evaluation of kidneys with a very high KDPI.

A very recent study from Moeckli *et al*^[110] helps in clarifying what's new in the current and emerging techniques of kidney evaluation. In particular the study concerns the use of omics and states that the most promising is transcriptome profile, also according the already cited studies.

Waiting for the advent of omics it seems that the best strategy in evaluating kidneys for transplantation is the clinical one. In the case of a very high KDRI pretransplant biopsy may be useful in allocating or not the kidneys

Table 6 Donor and transplant factors and corresponding hazard ratios for graft failure

	Hazard ratio	95%CI	P value
Donor parameter			
Age	1.013	1.011-1.015	< 0.0001
Afro American race	1.20	1.13-1.27	< 0.0001
Serum creatinine	1.25	1.17-1.23	< 0.0001
Hypertensive	1.13	1.08-1.19	< 0.0001
Diabetic	1.14	1.04-1.24	0.0040
Cause of Death	1.09	1.04-1.14	0.0002
Height	0.96	0.94-0.97	< 0.0001
Weight	0.98	0.97-0.99	0.0003
Donation after cardiac death	1.14	1.02-1.28	0.0246
HCV positive	1.27	1.13-1.43	< 0.0001
Transplant parameter			
HLA-DR mismatch	0.88	0.84-0.92	< 0.0001
Cold ischemia time	1.005	1.003-1.008	< 0.0001
En bloc transplant	0.70	0.57-0.84	0.0002
Double kidney transplant	0.86	0.75-1.00	0.0494

HLA:Human leukocyte antigen; HCV:Hepatitis C virus.

Table 7 Genes included in the study

ID	Symbol	Gene description	CADI-12 correlation	P value
3954887	CHCHD 10	Coiled-coil-helix-coiled-coil-helix domain containing 10	0.404	2.85×10^{-5}
4019160	KLHL 13	Kelch-like family member 13 (Drosophila)	0.369	1.49×10^{-4}
3326826	FJX1	Four jointed box 1 (Drosophila)	0.367	1.60×10^{-4}
3120343	MET	Met proto-oncogene (hepatocyte growth factor receptor)	0.352	3.01×10^{-4}
2864449	SERUNC5	Seine incorporator 5	0.318	0.0012
2567583	RNF149	Ring finger protein 149	0.280	0.0046
2879105	SPRY4	Sprout homolog 4 (Drosophila)	0.270	0.0062
3776504	TGIF1	TGFB-induced factor homeobox 1	0.244	0.0140
2898441	KAAG1	Kidney associated antigen 1	0.240	0.0154
3361971	ST5	Suppression of tumorigenity 5	0.232	0.0197
2459352	WNT9A	Wingless-type MMTV integration site family member 9A	0.212	0.0332
3021696	ASB15	Ankrin repeat and SOCS box-containing 15	-0.263	0.0079
3193339	RXRA	Retinoid X receptor alpha	-0.300	0.0023

CADI-12: Chronic allograft damage index at 12 mo.

REFERENCES

- 1 **Rosengard BR**, Feng S, Alfrey EJ, Zaroff JG, Emond JC, Henry ML, Garrity ER, Roberts JP, Wynn JJ, Metzger RA, Freeman RB, Port FK, Merion RM, Love RB, Busuttil RW, Delmonico FL. Report of the Crystal City meeting to maximize the use of organs recovered from the cadaver donor. *Am J Transplant* 2002; **2**: 701-711 [PMID: 12243491 DOI: 10.1034/j.1600-6143.2002.20804.x]
- 2 **Metzger RA**, Delmonico FL, Feng S, Port FK, Wynn JJ, Merion RM. Expanded criteria donors for kidney transplantation. *Am J Transplant* 2003; **3** Suppl 4: 114-125 [PMID: 12694055]
- 3 **van Ittersum FJ**, Hemke AC, Dekker FW, Hilbrands LB, Christiaans MH, Roodnat JJ, Hoitsma AJ, van Diepen M. Increased risk of graft failure and mortality in Dutch recipients receiving an expanded criteria donor kidney transplant. *Transpl Int* 2017; **30**: 14-28 [PMID: 27648731 DOI: 10.1111/tri.12863]
- 4 **Casati C**, Colombo VG, Perrino M, Rossetti OM, Querques M, Giacomoni A, Binaggia A, Colussi G. Renal Transplants from Older Deceased Donors: Use of Preimplantation Biopsy and Differential Allocation to Dual or Single Kidney Transplant according to Histological Score Has No Advantages over Allocation to Single Kidney Transplant by Simple Clinical Indication. *J Transplant* 2018; **2018**: 4141756 [PMID: 29862061 DOI: 10.1155/2018/4141756]
- 5 **Karpinski J**, Lajoie G, Cattran D, Fenton S, Zaltzman J, Cardella C, Cole E. Outcome of kidney transplantation from high-risk donors is determined by both structure and function. *Transplantation* 1999;

- 67: 1162-1167 [PMID: [10232568](#)]
- 6 **Alexander JW.** High-risk donors: diabetics, the elderly, and others. *Transplant Proc* 1992; **24**: 2221-2222 [PMID: [1413035](#)]
- 7 **Wang HJ, Kjellstrand CM, Cockfield SM, Solez K.** On the influence of sample size on the prognostic accuracy and reproducibility of renal transplant biopsy. *Nephrol Dial Transplant* 1998; **13**: 165-172 [PMID: [9481734](#)]
- 8 **Leunissen KM, Bosman FT, Nieman FH, Kootstra G, Vromen MA, Noordzij TC, van Hooff JP.** Amplification of the nephrotoxic effect of cyclosporine by preexistent chronic histological lesions in the kidney. *Transplantation* 1989; **48**: 590-593 [PMID: [2799911](#)]
- 9 **Johnson LB, Kuo PC, Schweitzer EJ, Ratner LE, Klassen DK, Hoehn-Saric EW, dela Torre A, Weir MR, Strange J, Bartlett ST.** Double renal allografts successfully increase utilization of kidneys from older donors within a single organ procurement organization. *Transplantation* 1996; **62**: 1581-1583 [PMID: [8970611](#)]
- 10 **Remuzzi G, Cravedi P, Perna A, Dimitrov BD, Turturro M, Locatelli G, Rigotti P, Baldan N, Beatini M, Valente U, Scalapogna M, Ruggerenti P; Dual Kidney Transplant Group.** Long-term outcome of renal transplantation from older donors. *N Engl J Med* 2006; **354**: 343-352 [PMID: [16436766](#) DOI: [10.1056/NEJMoa052891](#)]
- 11 **Mancilla E, Avila-Casado C, Uribe-Uribe N, Morales-Buenrostro LE, Rodríguez F, Vilatoba M, Gabilondo B, Aburto S, Rodríguez RM, Magaña S, Magaña F, Alberú J.** Time-zero renal biopsy in living kidney transplantation: a valuable opportunity to correlate predonation clinical data with histological abnormalities. *Transplantation* 2008; **86**: 1684-1688 [PMID: [19104405](#) DOI: [10.1097/TP.0b013e3181906150](#)]
- 12 **Pham PC, Wilkinson AH, Pham PT.** Evaluation of the potential living kidney donor. *Am J Kidney Dis* 2007; **50**: 1043-1051 [PMID: [18037107](#) DOI: [10.1053/j.ajkd.2007.08.022](#)]
- 13 **Davis CL.** Evaluation of the living kidney donor: current perspectives. *Am J Kidney Dis* 2004; **43**: 508-530 [PMID: [14981610](#) DOI: [10.1053/j.ajkd.2003.10.044](#)]
- 14 **Kayler LK, Mohanka R, Basu A, Shapiro R, Randhawa PS.** Correlation of histologic findings on preimplant biopsy with kidney graft survival. *Transpl Int* 2008; **21**: 892-898 [PMID: [18435681](#) DOI: [10.1111/j.1432-2277.2008.00681.x](#)]
- 15 **Munivenkatappa RB, Schweitzer EJ, Papadimitriou JC, Drachenberg CB, Thom KA, Perencevich EN, Haririan A, Rasetto F, Cooper M, Campos L, Barth RN, Bartlett ST, Philosophe B.** The Maryland aggregate pathology index: a deceased donor kidney biopsy scoring system for predicting graft failure. *Am J Transplant* 2008; **8**: 2316-2324 [PMID: [18801024](#) DOI: [10.1111/j.1600-6143.2008.02370.x](#)]
- 16 **Nickeleit V.** Pathology: donor biopsy evaluation at time of renal grafting. *Nat Rev Nephrol* 2009; **5**: 249-251 [PMID: [19384322](#) DOI: [10.1038/nrneph.2009.50](#)]
- 17 **Yong ZZ, Kipgen D, Aitken EL, Khan KH, Kingsmore DB.** Wedge Versus Core Biopsy at Time Zero: Which Provides Better Predictive Value for Delayed Graft Function With the Remuzzi Histological Scoring System? *Transplant Proc* 2015; **47**: 1605-1609 [PMID: [26293021](#) DOI: [10.1016/j.transproceed.2015.03.050](#)]
- 18 **Haas M, Ratner LE, Montgomery RA.** C4d staining of perioperative renal transplant biopsies. *Transplantation* 2002; **74**: 711-717 [PMID: [12352891](#) DOI: [10.1097/01.TP.0000027442.50229.D3](#)]
- 19 **Racusen LC, Solez K, Colvin RB, Bonsib SM, Castro MC, Cavallo T, Croker BP, Demetris AJ, Drachenberg CB, Fogo AB, Furness P, Gaber LW, Gibson IW, Glotz D, Goldberg JC, Grande J, Halloran PF, Hansen HE, Hartley B, Hayry PJ, Hill CM, Hoffman EO, Hunsicker LG, Lindblad AS, Yamaguchi Y.** The Banff 97 working classification of renal allograft pathology. *Kidney Int* 1999; **55**: 713-723 [PMID: [9987096](#) DOI: [10.1046/j.1523-1755.1999.00299.x](#)]
- 20 **Pisarski P, Schleicher C, Hauser I, Becker JU.** German recommendations for pretransplantation donor kidney biopsies. *Langenbecks Arch Surg* 2016; **401**: 133-140 [PMID: [26994917](#) DOI: [10.1007/s00423-016-1384-5](#)]
- 21 **Mengel M, Sis B, Haas M, Colvin RB, Halloran PF, Racusen LC, Solez K, Cendales L, Demetris AJ, Drachenberg CB, Farver CF, Rodriguez ER, Wallace WD, Glotz D; Banff meeting report writing committee.** Banff 2011 Meeting report: new concepts in antibody-mediated rejection. *Am J Transplant* 2012; **12**: 563-570 [PMID: [22300494](#) DOI: [10.1111/j.1600-6143.2011.03926.x](#)]
- 22 **Singh P, Farber JL, Doria C, Francos GC, Gulati R, Ramirez CB, Maley WR, Frank AM.** Peritransplant kidney biopsies: comparison of pathologic interpretations and practice patterns of organ procurement organizations. *Clin Transplant* 2012; **26**: E191-E199 [PMID: [22283182](#) DOI: [10.1111/j.1399-0012.2011.01584.x](#)]
- 23 **Azancot MA, Moreso F, Salcedo M, Cantarell C, Perello M, Torres IB, Montero A, Trilla E, Sellarés J, Morote J, Seron D.** The reproducibility and predictive value on outcome of renal biopsies from expanded criteria donors. *Kidney Int* 2014; **85**: 1161-1168 [PMID: [24284518](#) DOI: [10.1038/ki.2013.461](#)]
- 24 **Freedman BI, Divers J, High KP.** The authors reply:. *Kidney Int* 2014; **85**: 1242-1243 [PMID: [24786886](#) DOI: [10.1038/ki.2013.439](#)]
- 25 **Mueller TF, Solez K, Mas V.** Assessment of kidney organ quality and prediction of outcome at time of transplantation. *Semin Immunopathol* 2011; **33**: 185-199 [PMID: [21274534](#) DOI: [10.1007/s00281-011-0248-x](#)]
- 26 **El-Husseini A, Sabry A, Zahran A, Shoker A.** Can donor implantation renal biopsy predict long-term renal allograft outcome? *Am J Nephrol* 2007; **27**: 144-151 [PMID: [17308376](#)]
- 27 **Randhawa P.** Role of donor kidney biopsies in renal transplantation. *Transplantation* 2001; **71**: 1361-1365 [PMID: [11391219](#)]
- 28 **Hoffmann SC, Kampen RL, Amur S, Sharaf MA, Kleiner DE, Hunter K, John Swanson S, Hale DA, Mannon RB, Blair PJ, Kirk AD.** Molecular and immunohistochemical characterization of the onset and resolution of human renal allograft ischemia-reperfusion injury. *Transplantation* 2002; **74**: 916-923 [PMID: [12394831](#) DOI: [10.1097/01.TP.0000031932.83993.E9](#)]
- 29 **Hauser P, Schwarz C, Mitterbauer C, Regele HM, Mühlbacher F, Mayer G, Perco P, Mayer B, Meyer TW, Oberbauer R.** Genome-wide gene-expression patterns of donor kidney biopsies distinguish primary allograft function. *Lab Invest* 2004; **84**: 353-361 [PMID: [14704720](#)]
- 30 **Kainz A, Mitterbauer C, Hauser P, Schwarz C, Regele HM, Berlakovich G, Mayer G, Perco P, Mayer B, Meyer TW, Oberbauer R.** Alterations in gene expression in cadaveric vs. live donor kidneys suggest impaired tubular counterbalance of oxidative stress at implantation. *Am J Transplant* 2004; **4**: 1595-1604 [PMID: [15367214](#)]
- 31 **Avihingsanon Y, Ma N, Pavlakis M, Chon WJ, Uknis ME, Monaco AP, Ferran C, Stillman I, Schachter**

- AD, Mottley C, Zheng XX, Strom TB. On the intraoperative molecular status of renal allografts after vascular reperfusion and clinical outcomes. *J Am Soc Nephrol* 2005; **16**: 1542-1548 [PMID: [15888558](#)]
- 32 **Kainz A**, Perco P, Mayer B, Soleiman A, Steininger R, Mayer G, Mitterbauer C, Schwarz C, Meyer TW, Oberbauer R. Gene-expression profiles and age of donor kidney biopsies obtained before transplantation distinguish medium term graft function. *Transplantation* 2007; **83**: 1048-1054 [PMID: [17452894](#) DOI: [10.1097/01.tp.0000259960.56786](#)]
- 33 **Park W**, Griffin M, Grande JP, Cosio F, Stegall MD. Molecular evidence of injury and inflammation in normal and fibrotic renal allografts one year posttransplant. *Transplantation* 2007; **83**: 1466-1476 [PMID: [17565320](#) DOI: [10.1097/01.tp.0000265501.33362](#)]
- 34 **Mas VR**, Archer KJ, Yanek K, Dumur CI, Capparuccini MI, Mangino MJ, King A, Gibney EM, Fisher R, Posner M, Maluf D. Gene expression patterns in deceased donor kidneys developing delayed graft function after kidney transplantation. *Transplantation* 2008; **85**: 626-635 [PMID: [18347543](#) DOI: [10.1097/TP.0b013e318165491f](#)]
- 35 **Mueller TF**, Reeve J, Jhangri GS, Mengel M, Jacaj Z, Cairo L, Obeidat M, Todd G, Moore R, Famulski KS, Cruz J, Wishart D, Meng C, Sis B, Solez K, Kaplan B, Halloran PF. The transcriptome of the implant biopsy identifies donor kidneys at increased risk of delayed graft function. *Am J Transplant* 2008; **8**: 78-85 [PMID: [18021287](#)]
- 36 **Perco P**, Kainz A, Wilflingseder J, Soleiman A, Mayer B, Oberbauer R. Histogenomics: association of gene expression patterns with histological parameters in kidney biopsies. *Transplantation* 2009; **87**: 290-295 [PMID: [19155987](#) DOI: [10.1097/TP.0b013e318191b4c0](#)]
- 37 **Naesens M**, Li L, Ying L, Sansanwal P, Sigdel TK, Hsieh SC, Kambham N, Lerut E, Salvatierra O, Butte AJ, Sarwal MM. Expression of complement components differs between kidney allografts from living and deceased donors. *J Am Soc Nephrol* 2009; **20**: 1839-1851 [PMID: [19443638](#) DOI: [10.1681/ASN.2008111145](#)]
- 38 **Bodonyi-Kovacs G**, Putheti P, Marino M, Avihingsanon Y, Uknis ME, Monaco AP, Strom TB, Pavlakis M. Gene expression profiling of the donor kidney at the time of transplantation predicts clinical outcomes 2 years after transplantation. *Hum Immunol* 2010; **71**: 451-455 [PMID: [20156509](#) DOI: [10.1016/j.humimm.2010.02.013](#)]
- 39 **Cravedi P**, Maggiore U, Mannon RB. Low-density array PCR analysis of reperfusion biopsies: an adjunct to histological analysis. *Nephrol Dial Transplant* 2010; **25**: 4077-4086 [PMID: [20504838](#) DOI: [10.1093/ndt/gfq297](#)]
- 40 **Krol R**, Chudek J, Karkoszka H, Ziaja J, Kolonko A, Pawlicki J, Kajor M, Wiecek A, Cierpka L. Apoptosis of tubular epithelial cells in preimplantation biopsies of kidney grafts with immediate, slow and delayed function. *Ann Transplant* 2011; **16**: 17-22 [PMID: [21959505](#)]
- 41 **Goncalves-Primo A**, Mourão TB, Andrade-Oliveira V, Campos EF, Medina-Pestana JO, Tedesco-Silva H, Gerbase-DeLima M. Investigation of apoptosis-related gene expression levels in preimplantation biopsies as predictors of delayed kidney graft function. *Transplantation* 2014; **97**: 1260-1265 [PMID: [24503763](#) DOI: [10.1097/01.TP.0000442579.12285.e8](#)]
- 42 **Mazeti-Felicio CM**, Caldas HC, Fernandes-Charpiot IMM, Dezotti CZ, Baptista MASF, Abbud-Filho M. Preimplantation Kidney Biopsies of Extended Criteria Donors Have a Heavier Inflammatory Burden Than Kidneys From Standard Criteria Donors. *Transplant Direct* 2017; **3**: e180 [PMID: [28706983](#) DOI: [10.1097/TXD.0000000000000671](#)]
- 43 **Wang CJ**, Wetmore JB, Crary GS, Kasiske BL. The Donor Kidney Biopsy and Its Implications in Predicting Graft Outcomes: A Systematic Review. *Am J Transplant* 2015; **15**: 1903-1914 [PMID: [25772854](#) DOI: [10.1111/ajt.13213](#)]
- 44 **Naesens M**. Zero-Time Renal Transplant Biopsies: A Comprehensive Review. *Transplantation* 2016; **100**: 1425-1439 [PMID: [26599490](#) DOI: [10.1097/TP.0000000000001018](#)]
- 45 **Haas M**, Segev DL, Racusen LC, Bagnasco SM, Melancon JK, Tan M, Kraus ES, Rabb H, Ugarte RM, Burdick JF, Montgomery RA. Arteriosclerosis in kidneys from healthy live donors: comparison of wedge and needle core perioperative biopsies. *Arch Pathol Lab Med* 2008; **132**: 37-42 [PMID: [18181671](#) DOI: [10.1043/1543-2165](#)]
- 46 **Muruve NA**, Steinbecker KM, Luger AM. Are wedge biopsies of cadaveric kidneys obtained at procurement reliable? *Transplantation* 2000; **69**: 2384-2388 [PMID: [10868645](#)]
- 47 **De Vusser K**, Lerut E, Kuypers D, Vanrenterghem Y, Jochmans I, Monbaliu D, Pirenne J, Naesens M. The predictive value of kidney allograft baseline biopsies for long-term graft survival. *J Am Soc Nephrol* 2013; **24**: 1913-1923 [PMID: [23949799](#) DOI: [10.1681/ASN.2012111081](#)]
- 48 **Goumenos DS**, Kalliakmani P, Tsamandas AC, Maroulis I, Savidaki E, Fokaefs E, Papachristou E, Karavias D, Vlachojannis JG. The prognostic value of frozen section preimplantation graft biopsy in the outcome of renal transplantation. *Ren Fail* 2010; **32**: 434-439 [PMID: [20446780](#) DOI: [10.3109/08860221003658241](#)]
- 49 **Remuzzi G**, Grinyò J, Ruggerenti P, Beatini M, Cole EH, Milford EL, Brenner BM. Early experience with dual kidney transplantation in adults using expanded donor criteria. Double Kidney Transplant Group (DKG). *J Am Soc Nephrol* 1999; **10**: 2591-2598 [PMID: [10589699](#)]
- 50 **Ortiz F**, Paavonen T, Törnroth T, Koskinen P, Finne P, Salmela K, Kyllönen L, Grönhagen-Riska C, Honkanen E. Predictors of renal allograft histologic damage progression. *J Am Soc Nephrol* 2005; **16**: 817-824 [PMID: [15689401](#) DOI: [10.1681/ASN.2004060475](#)]
- 51 **Naesens M**, Sarwal MM. Molecular diagnostics in transplantation. *Nat Rev Nephrol* 2010; **6**: 614-628 [PMID: [20736923](#) DOI: [10.1038/nrneph.2010.113](#)]
- 52 **Kamińska D**, Kościelska-Kasprzak K, Drulis-Fajdasz D, Haloń A, Polak W, Chudoba P, Jańczak D, Mazanowska O, Patrzalek D, Klinger M. Kidney ischemic injury genes expressed after donor brain death are predictive for the outcome of kidney transplantation. *Transplant Proc* 2011; **43**: 2891-2894 [PMID: [21996181](#) DOI: [10.1016/j.transproceed.2011.08.062](#)]
- 53 **Iznerowicz A**, Chudoba P, Kamińska D, Kościelska-Kasprzak K, Drulis-Fajdasz D, Haloń A, Janczak D, Boratyńska M, Klinger M, Patrzalek D, Polak WG. Duration of brain death and cold ischemia time, but not warm ischemia time, increases expression of genes associated with apoptosis in transplanted kidneys from deceased donors. *Transplant Proc* 2011; **43**: 2887-2890 [PMID: [21996180](#) DOI: [10.1016/j.transproceed.2011.08.013](#)]
- 54 **Mitterbauer C**, Schwarz C, Hauser P, Steininger R, Regele HM, Rosenkranz A, Oberbauer R. Impaired tubulointerstitial expression of endothelin-1 and nitric oxide isoforms in donor kidney biopsies with postischemic acute renal failure. *Transplantation* 2003; **76**: 715-720 [PMID: [12973116](#) DOI: [10.1097/01.TP.0000082820.13813.19](#)]

- 55 **Colussi G**, Casati C, Colombo VG, Camozzi MLP, Salerno FR. Renal transplants from older deceased donors: Is pre-implantation biopsy useful? A monocentric observational clinical study. *World J Transplant* 2018; **8**: 110-121 [PMID: 30148077 DOI: 10.5500/wjtl.v8.i4.110]
- 56 **Liapis H**, Gaut JP, Klein C, Bagnasco S, Kraus E, Farris AB, Honsova E, Perkowska-Ptasinska A, David D, Goldberg J, Smith M, Mengel M, Haas M, Seshan S, Pegas KL, Horwedel T, Paliwa Y, Gao X, Landsittel D, Randhawa P; Banff Working Group. Banff Histopathological Consensus Criteria for Preimplantation Kidney Biopsies. *Am J Transplant* 2017; **17**: 140-150 [PMID: 27333454 DOI: 10.1111/ajt.13929]
- 57 **Carpenter D**, Husain SA, Brennan C, Batal I, Hall IE, Santoriello D, Rosen R, Crew RJ, Campenot E, Dube GK, Radhakrishnan J, Stokes MB, Sandoval PR, D'Agati V, Cohen DJ, Ratner LE, Markowitz G, Mohan S. Procurement Biopsies in the Evaluation of Deceased Donor Kidneys. *Clin J Am Soc Nephrol* 2018; **13**: 1876-1885 [PMID: 30361336 DOI: 10.2215/CJN.04150418]
- 58 **Port FK**, Bragg-Gresham JL, Metzger RA, Dykstra DM, Gillespie BW, Young EW, Delmonico FL, Wynn JJ, Merion RM, Wolfe RA, Held PJ. Donor characteristics associated with reduced graft survival: an approach to expanding the pool of kidney donors. *Transplantation* 2002; **74**: 1281-1286 [PMID: 12451266 DOI: 10.1097/01.TP.0000034060.18738.0B]
- 59 **Verran DJ**, deLeon C, Chui AK, Chapman JR. Factors in older cadaveric organ donors impacting on renal allograft outcome. *Clin Transplant* 2001; **15**: 1-5 [PMID: 11168308]
- 60 **Wright DL**, Kemp TL. The dual-task methodology and assessing the attentional demands of ambulation with walking devices. *Phys Ther* 1992; **72**: 306-12; discussion 313-5 [PMID: 1584862]
- 61 **Anglicheau D**, Loupy A, Lefaucheur C, Pessione F, Létourneau I, Côté I, Gaha K, Noël LH, Patey N, Droz D, Martinez F, Zuber J, Glotz D, Thervet E, Legendre C. A simple clinico-histopathological composite scoring system is highly predictive of graft outcomes in marginal donors. *Am J Transplant* 2008; **8**: 2325-2334 [PMID: 18785957 DOI: 10.1111/j.1600-6143.2008.02394.x]
- 62 **Hopfer H**, Kemény É. Assessment of donor biopsies. *Curr Opin Organ Transplant* 2013; **18**: 306-312 [PMID: 23492644 DOI: 10.1097/MOT.0b013e3283607a6e]
- 63 **Sánchez-Escuredo A**, Sagasta A, Revuelta I, Rodas LM, Paredes D, Musquera M, Diekmann F, Campistol JM, Solé M, Oppenheimer F. Histopathological evaluation of pretransplant donor biopsies in expanded criteria donors with high kidney donor profile index: a retrospective observational cohort study. *Transpl Int* 2017; **30**: 975-986 [PMID: 28403541 DOI: 10.1111/tri.12966]
- 64 **Nyberg SL**, Matas AJ, Rogers M, Harmsen WS, Velosa JA, Larson TS, Prieto M, Ishitani MB, Sterioff S, Stegall MD. Donor scoring system for cadaveric renal transplantation. *Am J Transplant* 2001; **1**: 162-170 [PMID: 12099365]
- 65 **Nyberg SL**, Matas AJ, Kremers WK, Thostenson JD, Larson TS, Prieto M, Ishitani MB, Sterioff S, Stegall MD. Improved scoring system to assess adult donors for cadaver renal transplantation. *Am J Transplant* 2003; **3**: 715-721 [PMID: 12780563]
- 66 **Nyberg SL**, Baskin-Bey ES, Kremers W, Prieto M, Henry ML, Stegall MD. Improving the prediction of donor kidney quality: deceased donor score and resistive indices. *Transplantation* 2005; **80**: 925-929 [PMID: 16249740 DOI: 10.1097/01.TP.0000173798.04043.AF]
- 67 **Schold JD**, Kaplan B, Baliga RS, Meier-Kriesche HU. The broad spectrum of quality in deceased donor kidneys. *Am J Transplant* 2005; **5**: 757-765 [PMID: 15760399]
- 68 **Moore J**, Ramakrishna S, Tan K, Cockwell P, Eardley K, Little MA, Rylance P, Shivakumar K, Suresh V, Tomlinson K, Ready A, Borrows R. Identification of the optimal donor quality scoring system and measure of early renal function in kidney transplantation. *Transplantation* 2009; **87**: 578-586 [PMID: 19307797 DOI: 10.1097/TP.0b013e3181949e71]
- 69 **Friedewald JJ**. Utilization and outcomes of marginal kidneys--using Kidney Donor Risk Index to move beyond the current labels. *Am J Transplant* 2012; **12**: 1971-1972 [PMID: 22845906 DOI: 10.1111/j.1600-6143.2012.04149.x]
- 70 **Irish WD**, McCollum DA, Tesi RJ, Owen AB, Brennan DC, Bailly JE, Schnitzler MA. Nomogram for predicting the likelihood of delayed graft function in adult cadaveric renal transplant recipients. *J Am Soc Nephrol* 2003; **14**: 2967-2974 [PMID: 14569108 DOI: 10.1097/01.ASN.0000093254.31868.85]
- 71 **Rao PS**, Schaubel DE, Guidinger MK, Andreoni KA, Wolfe RA, Merion RM, Port FK, Sung RS. A comprehensive risk quantification score for deceased donor kidneys: the kidney donor risk index. *Transplantation* 2009; **88**: 231-236 [PMID: 19623019 DOI: 10.1097/TP.0b013e3181ac620b]
- 72 **OPTN**. Organ Procurement and Transplantation Network. Available from: <http://optn.transplant.hrsa.gov/converge/resources/allocationcalculators.asp?index=81&Submit=true&extra=true#bottom>
- 73 **Wang ZG**. Adherence to standardization and integrity in translational medicine research. *Chin J Traumatol* 2014; **17**: 311-312 [PMID: 25471422 DOI: 10.1016/j.tre.2015.04.002]
- 74 **Woodside KJ**, Merion RM, Leichtman AB, de los Santos R, Arrington CJ, Rao PS, Sung RS. Utilization of kidneys with similar kidney donor risk index values from standard versus expanded criteria donors. *Am J Transplant* 2012; **12**: 2106-2114 [PMID: 22702349 DOI: 10.1111/j.1600-6143.2012.04146.x]
- 75 **Jun H**, Jung CW, Lim S, Kim MG. Kidney Donor Risk Index as the Predictor for the Short-term Clinical Outcomes After Kidney Transplant From Deceased Donor With Acute Kidney Injury. *Transplant Proc* 2017; **49**: 88-91 [PMID: 28104166 DOI: 10.1016/j.transproceed.2016.11.003]
- 76 **Han M**, Jeong JC, Koo TY, Jeon HJ, Kwon HY, Kim YJ, Ryu HJ, Ahn C, Yang J. Kidney donor risk index is a good prognostic tool for graft outcomes in deceased donor kidney transplantation with short, cold ischemic time. *Clin Transplant* 2014; **28**: 337-344 [PMID: 24506770 DOI: 10.1111/ctr.12318]
- 77 **Del Moral Martín RMG**, Retamero Díaz JA, Cava Molina M, Cobacho Tornel BM, Bravo Soto J, Osuna Ortega A, O'Valle Ravassa F. Validation of KDRI/KDPI for the selection of expanded criteria kidney donors. *Nefrologia* 2018; **38**: 297-303 [PMID: 29132985 DOI: 10.1016/j.nefro.2017.08.006]
- 78 **Leichtman AB**, McCullough KP, Wolfe RA. Improving the allocation system for deceased-donor kidneys. *N Engl J Med* 2011; **364**: 1287-1289 [PMID: 21410390 DOI: 10.1056/NEJMp1102728]
- 79 **Smith JM**, Biggins SW, Haselby DG, Kim WR, Wedd J, Lamb K, Thompson B, Segev DL, Gustafson S, Kandaswamy R, Stock PG, Matas AJ, Samana CJ, Sleeman EF, Stewart D, Harper A, Edwards E, Snyder JJ, Kasiske BL, Israni AK. Kidney, pancreas and liver allocation and distribution in the United States. *Am J Transplant* 2012; **12**: 3191-3212 [PMID: 23157207 DOI: 10.1111/j.1600-6143.2012.04259.x]
- 80 **Massie AB**, Luo X, Chow EK, Alejo JL, Desai NM, Segev DL. Survival benefit of primary deceased donor transplantation with high-KDPI kidneys. *Am J Transplant* 2014; **14**: 2310-2316 [PMID: 25139729 DOI: 10.1111/ajt.12830]
- 81 **Hernandez RA**, Malek SK, Milford EL, Finlayson SR, Tullius SG. The combined risk of donor quality

- and recipient age: higher-quality kidneys may not always improve patient and graft survival. *Transplantation* 2014; **98**: 1069-1076 [PMID: [24918617](#) DOI: [10.1097/TP.0000000000000181](#)]
- 82 **Tittelbach-Helmrich D**, Thurow C, Arwinski S, Schleicher C, Hopt UT, Bausch D, Droganitz O, Pisarski P. Poor organ quality and donor-recipient age mismatch rather than poor donation rates account for the decrease in deceased kidney transplantation rates in a Germany Transplant Center. *Transpl Int* 2015; **28**: 191-198 [PMID: [25345374](#) DOI: [10.1111/tri.12478](#)]
- 83 **Lehner LJ**, Kleinstaub A, Halleck F, Khadzhynov D, Schrezenmeier E, Duerr M, Eckardt KU, Budde K, Staack O. Assessment of the Kidney Donor Profile Index in a European cohort. *Nephrol Dial Transplant* 2018; **33**: 1465-1472 [PMID: [29617898](#) DOI: [10.1093/ndt/gfy030](#)]
- 84 **Arias-Cabrales C**, Pérez-Sáez MJ, Redondo-Pachón D, Buxeda A, Burballa C, Bermejo S, Sierra A, Mir M, Burón A, Zapatero A, Crespo M, Pascual J. Usefulness of the KDPI in Spain: A comparison with donor age and definition of standard/expanded criteria donor. *Nefrologia* 2018; **38**: 503-513 [PMID: [29884503](#) DOI: [10.1016/j.nefro.2018.03.003](#)]
- 85 **Chopra B**, Sureshkumar KK. Limitation of Terminal Serum Creatinine as a Kidney Donor Profile Index Variable in Predicting Long-Term Kidney Transplant Outcomes. *Transplant Proc* 2018; **50**: 1272-1275 [PMID: [29753462](#) DOI: [10.1016/j.transproceed.2018.03.019](#)]
- 86 **Rehse G**, Halleck F, Khadzhynov D, Lehner LJ, Kleinstaub A, Staack A, Duerr M, Budde K, Staack O. Validation of the Living Kidney Donor Profile Index in a European cohort and comparison of long-term outcomes with US results. *Nephrol Dial Transplant* 2019; **34**: 1063-1070 [PMID: [29746671](#) DOI: [10.1093/ndt/gfy118](#)]
- 87 **Massie AB**, Leanza J, Fahmy LM, Chow EK, Desai NM, Luo X, King EA, Bowring MG, Segev DL. A Risk Index for Living Donor Kidney Transplantation. *Am J Transplant* 2016; **16**: 2077-2084 [PMID: [26752290](#) DOI: [10.1111/ajt.13709](#)]
- 88 **Jay CL**, Washburn K, Dean PG, Helmick RA, Pugh JA, Stegall MD. Survival Benefit in Older Patients Associated With Earlier Transplant With High KDPI Kidneys. *Transplantation* 2017; **101**: 867-872 [PMID: [27495758](#) DOI: [10.1097/TP.0000000000001405](#)]
- 89 **Doshi MD**, Reese PP, Hall IE, Schröppel B, Ficek J, Formica RN, Weng FL, Hasz RD, Thiessen-Philbrook H, Parikh CR. Utility of Applying Quality Assessment Tools for Kidneys With KDPI ≥ 80 . *Transplantation* 2017; **101**: 1125-1133 [PMID: [27490414](#) DOI: [10.1097/TP.0000000000001388](#)]
- 90 **Gandolfi I**, Buzio C, Zanelli P, Palmisano A, Cremaschi E, Vaglio A, Piotti G, Melfa L, La Manna G, Feliciangeli G, Cappuccilli M, Scolari MP, Capelli I, Panicali L, Baraldi O, Stefoni S, Buscaroli A, Ridolfi L, D'Errico A, Cappelli G, Bonucchi D, Rubbiani E, Albertazzi A, Mehrotra A, Cravedi P, Maggiore U. The Kidney Donor Profile Index (KDPI) of marginal donors allocated by standardized pretransplant donor biopsy assessment: distribution and association with graft outcomes. *Am J Transplant* 2014; **14**: 2515-2525 [PMID: [25155294](#) DOI: [10.1111/ajt.12928](#)]
- 91 **Ruggenti P**, Silvestre C, Boschiero L, Rota G, Furian L, Perna A, Rossini G, Remuzzi G, Rigotti P. Long-term outcome of renal transplantation from octogenarian donors: A multicenter controlled study. *Am J Transplant* 2017; **17**: 3159-3171 [PMID: [28792681](#) DOI: [10.1111/ajt.14459](#)]
- 92 **Bae S**, Massie AB, Luo X, Anjum S, Desai NM, Segev DL. Changes in Discard Rate After the Introduction of the Kidney Donor Profile Index (KDPI). *Am J Transplant* 2016; **16**: 2202-2207 [PMID: [26932575](#) DOI: [10.1111/ajt.13769](#)]
- 93 **Ekser B**, Furian L, Broggiato A, Silvestre C, Pierobon ES, Baldan N, Rigotti P. Technical aspects of unilateral dual kidney transplantation from expanded criteria donors: experience of 100 patients. *Am J Transplant* 2010; **10**: 2000-2007 [PMID: [20636454](#) DOI: [10.1111/j.1600-6143.2010.03188.x](#)]
- 94 **Ekser B**, Powelson JA, Fridell JA, Goggins WC, Taber TE. Is the kidney donor profile index (KDPI) universal or UNOS-specific? *Am J Transplant* 2018; **18**: 1031-1032 [PMID: [29024392](#) DOI: [10.1111/ajt.14538](#)]
- 95 **Ruggenti P**, Remuzzi G. Invited letter in response to: "Is the kidney donor profile index (KDPI) universal or UNOS-specific?". *Am J Transplant* 2018; **18**: 1033-1034 [PMID: [29316192](#) DOI: [10.1111/ajt.14652](#)]
- 96 **Rege A**, Irish B, Castleberry A, Vikraman D, Sanoff S, Ravindra K, Collins B, Sudan D. Trends in Usage and Outcomes for Expanded Criteria Donor Kidney Transplantation in the United States Characterized by Kidney Donor Profile Index. *Cureus* 2016; **8**: e887 [PMID: [28018757](#) DOI: [10.7759/cureus.887](#)]
- 97 **Tice BG**, Datta M, Mousseau J, Aliaga L, Altinok O, Barrios Sazo MG, Betancourt M, Bodek A, Bravar A, Brooks WK, Budd H, Bustamante MJ, Butkevich A, Martinez Caicedo DA, Castromonte CM, Christy ME, Chvojka J, da Motta H, Devan J, Dytman SA, Diaz GA, Eberly B, Felix J, Fields L, Fiorentini GA, Gago AM, Gallagher H, Gran R, Harris DA, Higuera A, Hurtado K, Jerkins M, Kafka T, Kordosky M, Kulagin SA, Le T, Maggi G, Maher E, Manly S, Mann WA, Marshall CM, Martin Mari C, McFarland KS, McGivern CL, McGowan AM, Miller J, Mislivec A, Morfin JG, Muhlbeier T, Naples D, Nelson JK, Norrick A, Osta J, Palomino JL, Paolone V, Park J, Patrick CE, Perdue GN, Rakotondravohitra L, Ransome RD, Ray H, Ren L, Rodrigues PA, Savage DG, Schellman H, Schmitz DW, Simon C, Snider FD, Solano Salinas CJ, Tagg N, Valencia E, Velásquez JP, Walton T, Wolcott J, Zavala G, Zhang D, Ziemer BP; MINERvA Collaboration. Measurement of ratios of v_{μ} charged-current cross sections on C, Fe, and Pb to CH at neutrino energies 2-20 GeV. *Phys Rev Lett* 2014; **112**: 231801 [PMID: [24972195](#) DOI: [10.1111/ajt.12553](#)]
- 98 **Philippe E**, Lee APK, Bracke B, Hartman V, Chapelle T, Roeyen G, de Greef K, Ysebaert DK, van Beeumen G, Couttenye MM, Van Craenenbroeck AH, Hellemans R, Bosmans JL, Abramowicz D. Does Kidney Donor Risk Index implementation lead to the transplantation of more and higher-quality donor kidneys? *Nephrol Dial Transplant* 2017; **32**: 1934-1938 [PMID: [28992075](#) DOI: [10.1093/ndt/gfx257](#)]
- 99 **Sung RS**, Christensen LL, Leichtman AB, Greenstein SM, Distant DA, Wynn JJ, Stegall MD, Delmonico FL, Port FK. Determinants of discard of expanded criteria donor kidneys: impact of biopsy and machine perfusion. *Am J Transplant* 2008; **8**: 783-792 [PMID: [18294347](#) DOI: [10.1111/j.1600-6143.2008.02157.x](#)]
- 100 **Jochmans I**, Moers C, Smits JM, Leuvenink HG, Treckmann J, Paul A, Rahmel A, Squifflet JP, van Heurn E, Monbaliu D, Ploeg RJ, Pirenne J. The prognostic value of renal resistance during hypothermic machine perfusion of deceased donor kidneys. *Am J Transplant* 2011; **11**: 2214-2220 [PMID: [21834917](#) DOI: [10.1111/j.1600-6143.2011.03685.x](#)]
- 101 **Parikh CR**, Hall IE, Bhargoo RS, Ficek J, Abt PL, Thiessen-Philbrook H, Lin H, Bimali M, Murray PT, Rao V, Schröppel B, Doshi MD, Weng FL, Reese PP. Associations of Perfusate Biomarkers and Pump Parameters With Delayed Graft Function and Deceased Donor Kidney Allograft Function. *Am J Transplant* 2016; **16**: 1526-1539 [PMID: [26695524](#) DOI: [10.1111/ajt.13655](#)]
- 102 **Reese PP**, Hall IE, Weng FL, Schröppel B, Doshi MD, Hasz RD, Thiessen-Philbrook H, Ficek J, Rao V,

- Murray P, Lin H, Parikh CR. Associations between Deceased-Donor Urine Injury Biomarkers and Kidney Transplant Outcomes. *J Am Soc Nephrol* 2016; **27**: 1534-1543 [PMID: 26374609 DOI: 10.1681/ASN.2015040345]
- 103 Scian MJ, Maluf DG, Archer KJ, Turner SD, Suh JL, David KG, King AL, Posner MP, Brayman KL, Mas VR. Identification of biomarkers to assess organ quality and predict posttransplantation outcomes. *Transplantation* 2012; **94**: 851-858 [PMID: 22992769 DOI: 10.1097/TP.0b013e318263702b]
- 104 Gustafson E, Asif S, Kozarcanin H, Elgue G, Meurling S, Ekdahl KN, Nilsson B. Control of IBMIR Induced by Fresh and Cryopreserved Hepatocytes by Low Molecular Weight Dextran Sulfate Versus Heparin. *Cell Transplant* 2017; **26**: 71-81 [PMID: 27452808 DOI: 10.1016/S0140-6736(16)30826-1]
- 105 Guy AJ, Nath J, Cobbold M, Ludwig C, Tennant DA, Inston NG, Ready AR. Metabolomic analysis of perfusate during hypothermic machine perfusion of human cadaveric kidneys. *Transplantation* 2015; **99**: 754-759 [PMID: 25222017 DOI: 10.1097/TP.0000000000000398]
- 106 Hosgood SA, Saeb-Parsy K, Wilson C, Callaghan C, Collett D, Nicholson ML. Protocol of a randomised controlled, open-label trial of ex vivo normothermic perfusion versus static cold storage in donation after circulatory death renal transplantation. *BMJ Open* 2017; **7**: e012237 [PMID: 28115329 DOI: 10.1136/bmjopen-2016-012237]
- 107 GerberD. Biomarkers of Aging as Predictors of Kidney Transplant Function. [accessed 2019 Mar 1]. In: ClinicalTrials.gov [Internet]. Bethesda (MD): U.S. National Library of Medicine. Available from: <http://clinicaltrials.gov/show/NCT02335333> ClinicalTrials.gov Identifier: NCT02335333
- 108 Parikh CR. Deceased Donor Biomarkers and Recipient Outcomes (DDS). [accessed 2019 Mar 1]. In: ClinicalTrials.gov [Internet]. Bethesda (MD): U.S. National Library of Medicine. Available from: <http://clinicaltrials.gov/show/NCT01848249> ClinicalTrials.gov Identifier: NCT01848249
- 109 Cravedi P, Remuzzi G, Rota G, De Pascale S, La Canna F, Piccolo G, Rossini G, Vesconi S. Pulsed Perfusion for Marginal Kidneys (PREDICTION). [accessed 2019 Mar 1]. In: ClinicalTrials.gov [Internet]. Bethesda (MD): U.S. National Library of Medicine. Available from: <http://clinicaltrials.gov/show/NCT02055950> ClinicalTrials.gov Identifier: NCT02055950
- 110 Moeckli B, Sun P, Lazeyras F, Morel P, Moll S, Pascual M, Bühler LH. Evaluation of donor kidneys prior to transplantation: an update of current and emerging methods. *Transpl Int* 2019; **32**: 459-469 [PMID: 30903673 DOI: 10.1111/tri.13430]



Published By Baishideng Publishing Group Inc
7041 Koll Center Parkway, Suite 160, Pleasanton, CA 94566, USA
Telephone: +1-925-2238242
Fax: +1-925-2238243
E-mail: bpgoffice@wjgnet.com
Help Desk: <https://www.f6publishing.com/helpdesk>
<https://www.wjgnet.com>

