

## Supplementary

Fig1

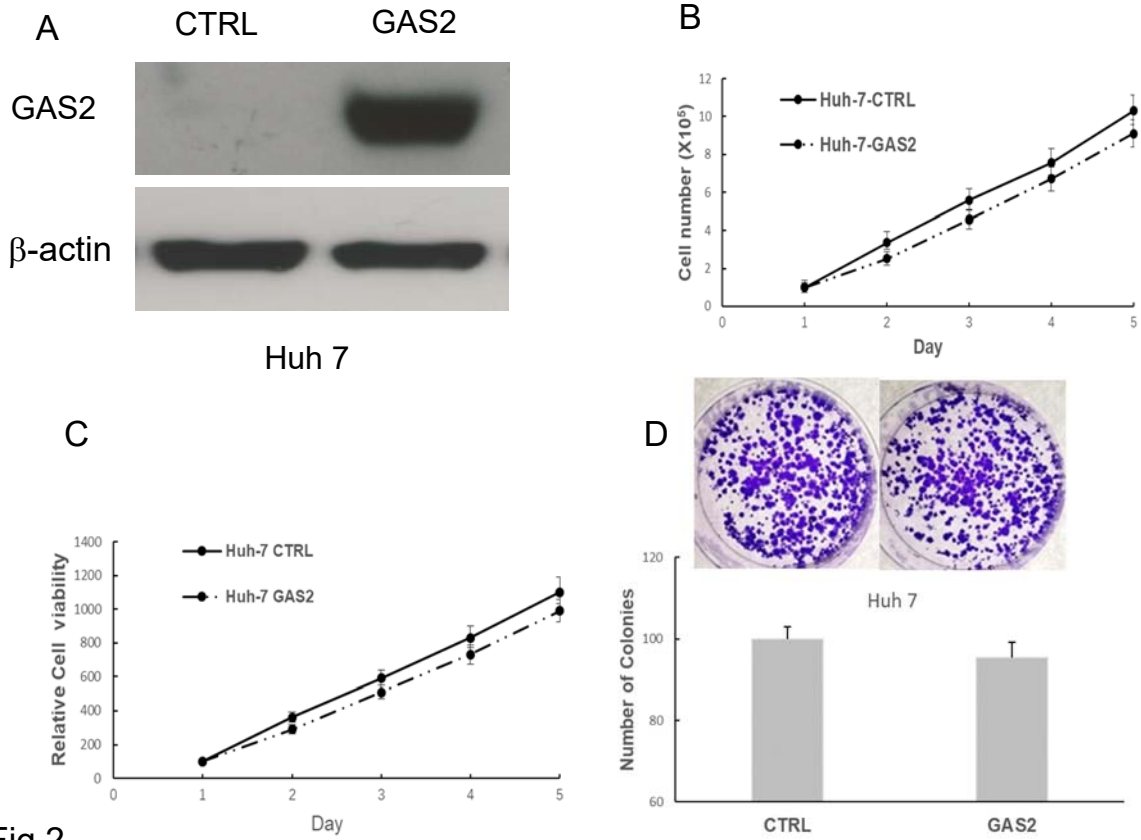


Fig.2

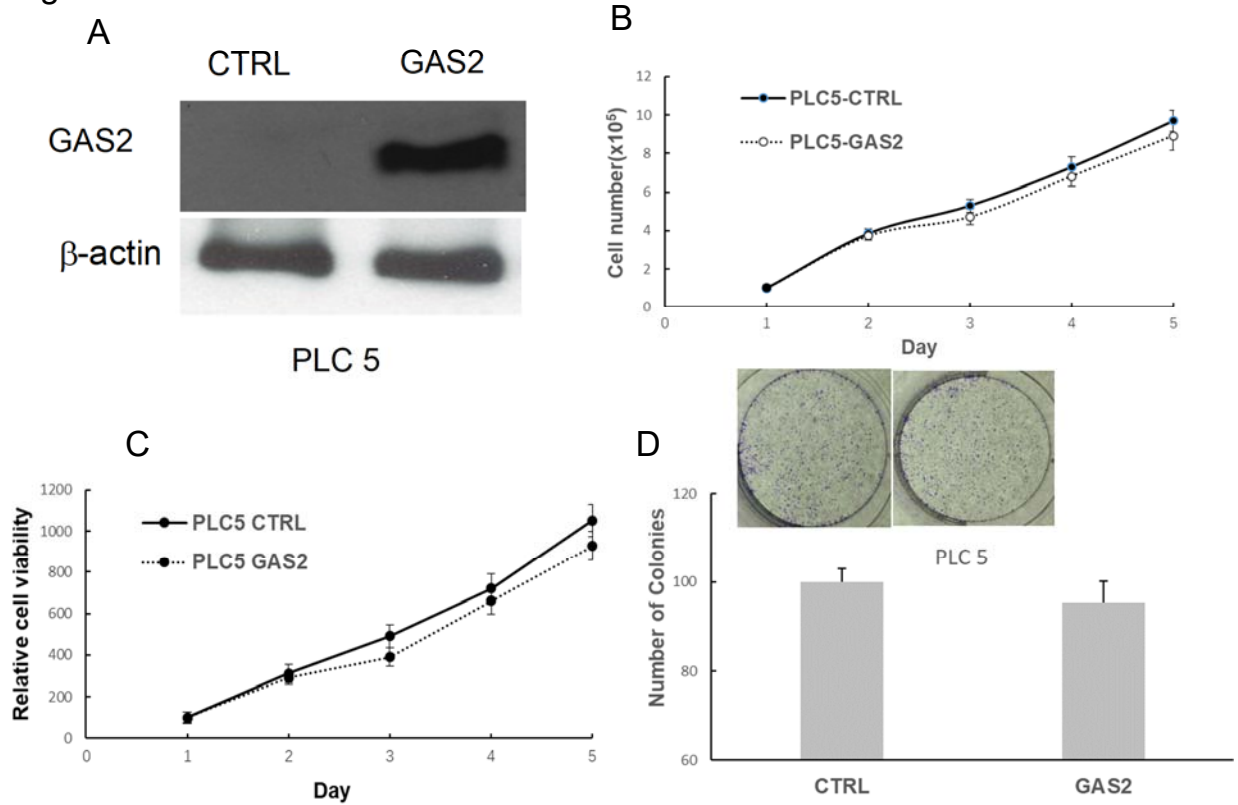


Fig1 & Fig 2 GAS2 exerts tumor suppressive function in HCC cell. (1A) Huh 7 cells transfected with pDEST40-CTRL or pDEST40- GAS2. GAS2 transfected in SK-hep1 was identified by Western blot.  $\beta$ -actin was used as the loading control. (1B) cell counting ( $P > 0.05$  vs Control); (1C) cell viability ( $P > 0.05$  vs Control); (1D) anchorage-dependent colony formation ( $P > 0.05$  vs Control); (2A) PLC5 cells transfected with pDEST40-CTRL or pDEST40- GAS2. GAS2 transfected in SK-hep1 was identified by Western blot.  $\beta$ -actin was used as the loading control. (2B) cell counting ( $P > 0.05$  vs Control); (2C) cell viability ( $P > 0.05$  vs Control); (2D) anchorage-dependent colony formation ( $P > 0.05$  vs Control);

Fig 3

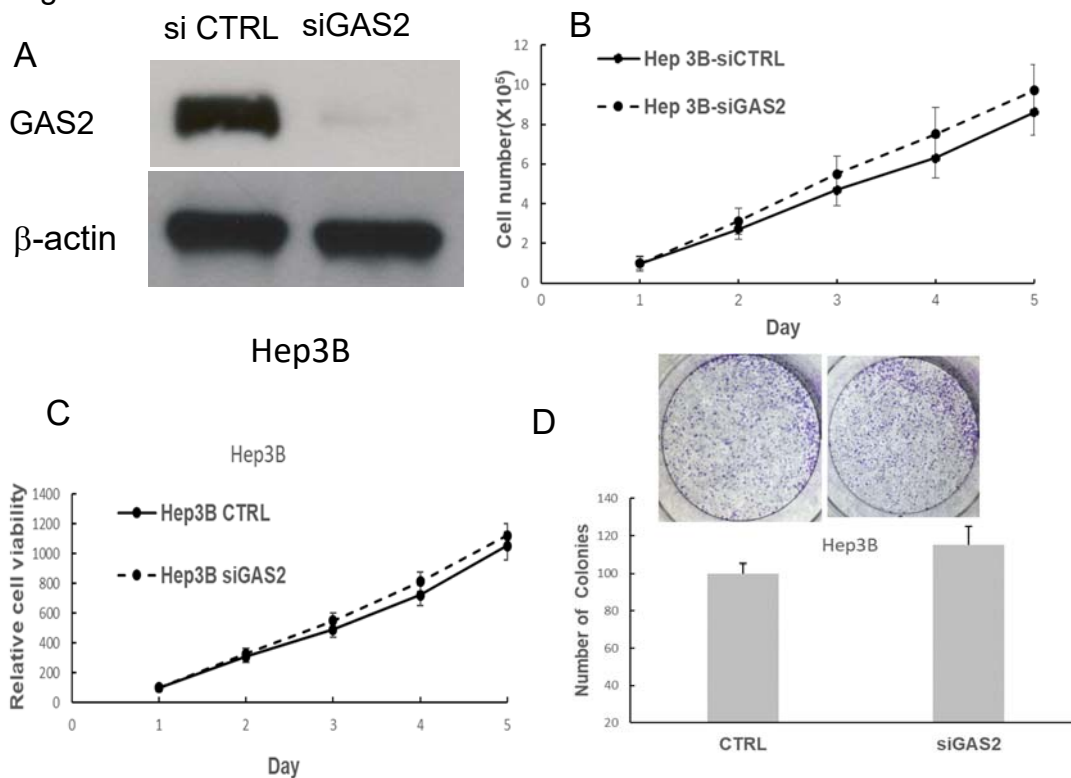


Fig 3. Effect of knock down endogenous GAS2 (siGAS2) in Hep3B. (A) Western blot analysis of siGAS2,  $\beta$ -actin was used as the loading control. (B) cell counting ( $P > 0.05$  vs Control); (C) cell viability ( $P > 0.05$  vs Control); (D) anchorage-dependent colony formation ( $P > 0.05$  vs Control)