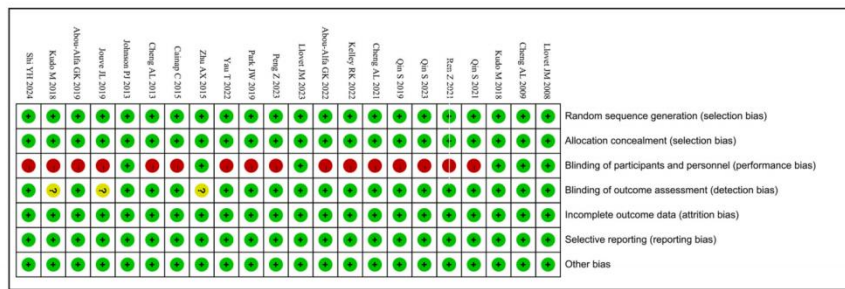
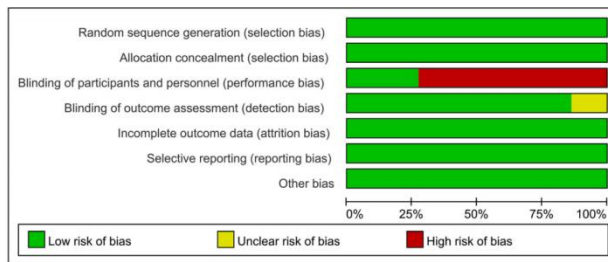


A

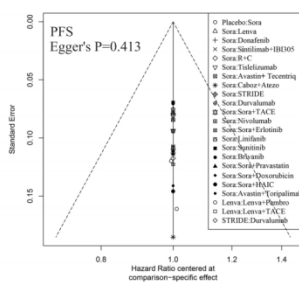


B

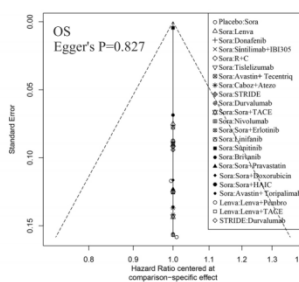


Supplementary Figure 1 Summary of bias assessments for included studies using the Cochrane Risk of Bias Tool. A: Risk of bias graph; B: Risk of bias summary.

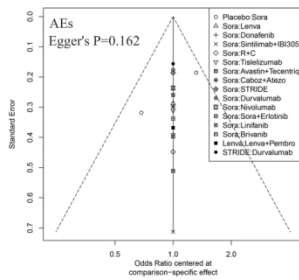
A



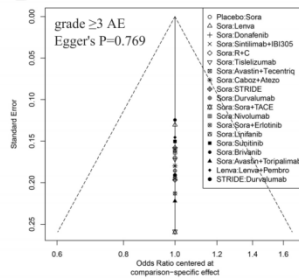
B



C

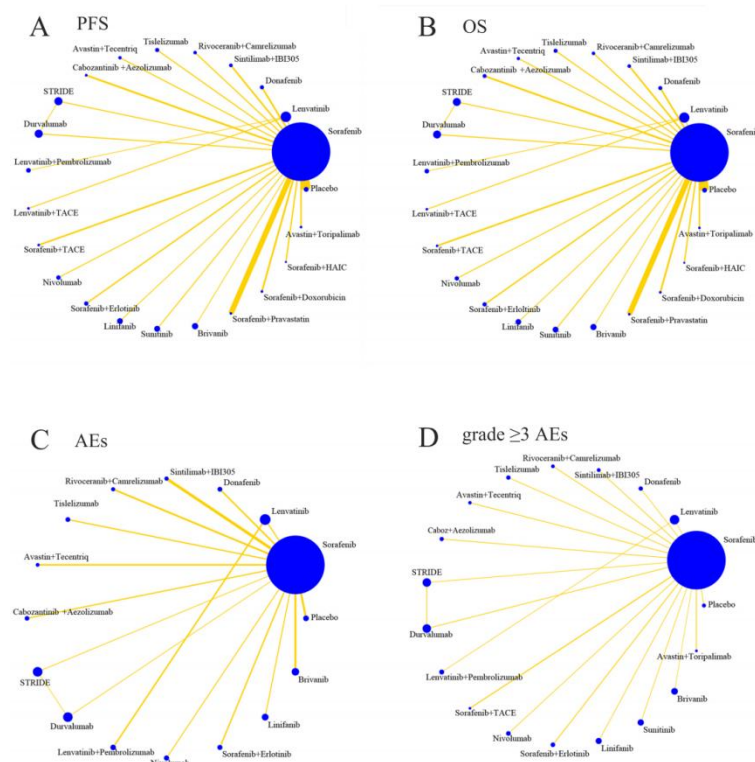


D

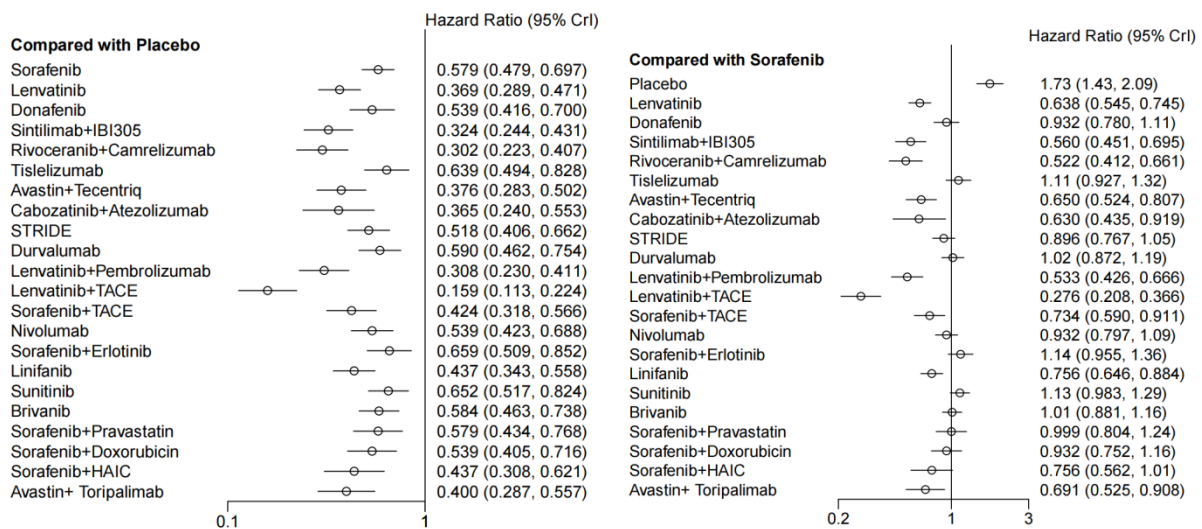


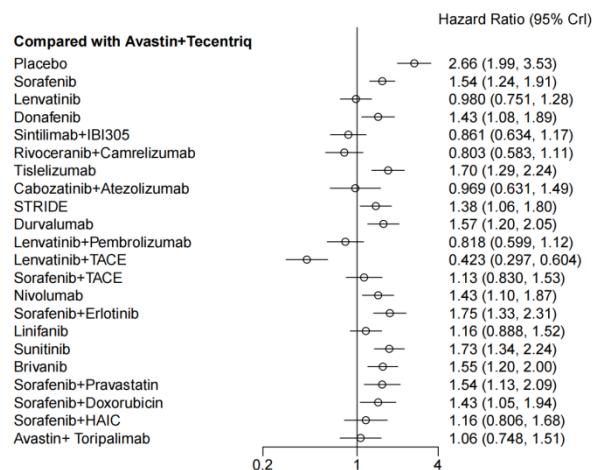
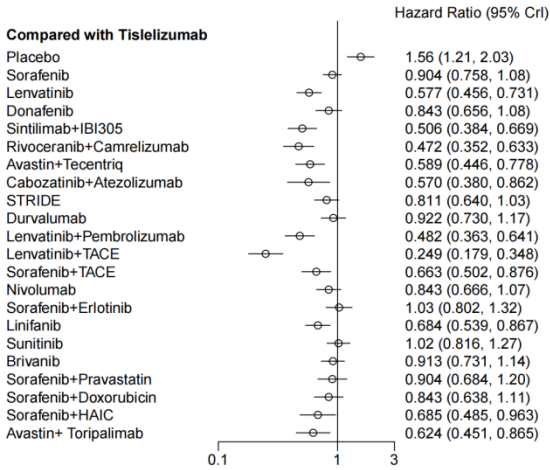
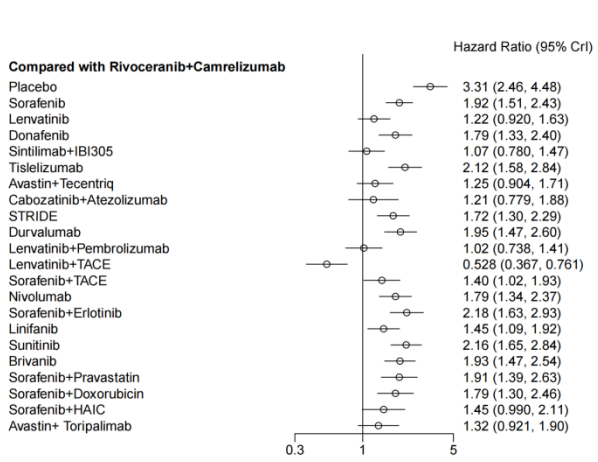
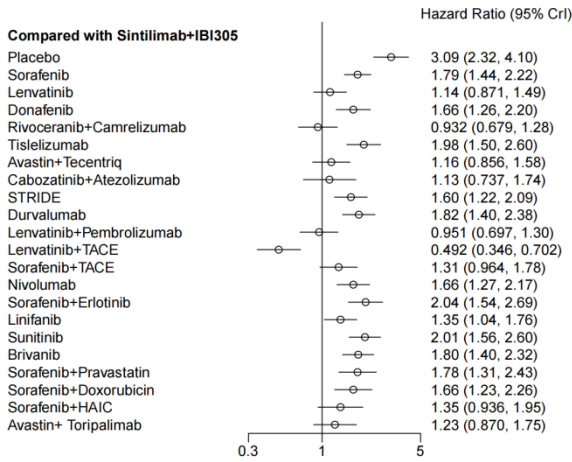
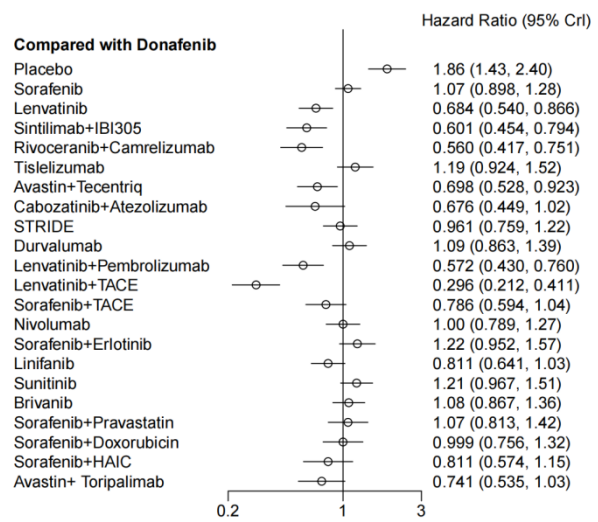
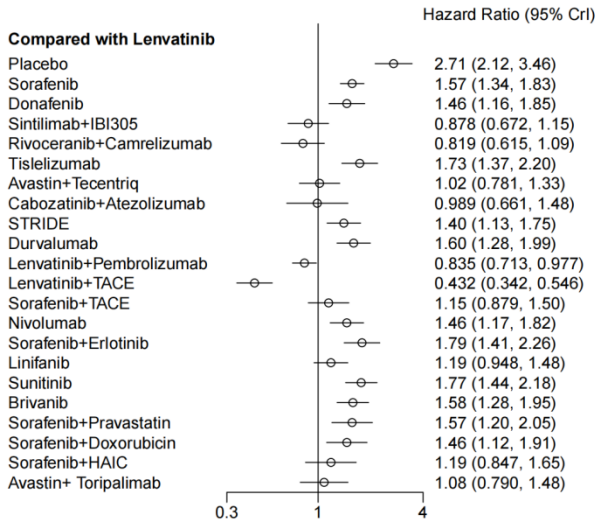
Supplementary Figure 2 Comparison-adjusted funnel plots for interventions. A: Funnel plot for progression-free survival; B: Funnel plot for overall survival; C: Funnel plot for adverse events; D: Funnel plot for grade ≥ 3 adverse events. AEs: Adverse events; HAIC: Hepatic arterial infusion chemotherapy; Lenva: Lenvatinib; OS: Overall survival; Pembro: Pembrolizumab; PFS: Progression-free survival; R + C: Rivoceranib plus camrelizumab; Sora: Sorafenib; STRIDE: Single tremelimumab regular-interval

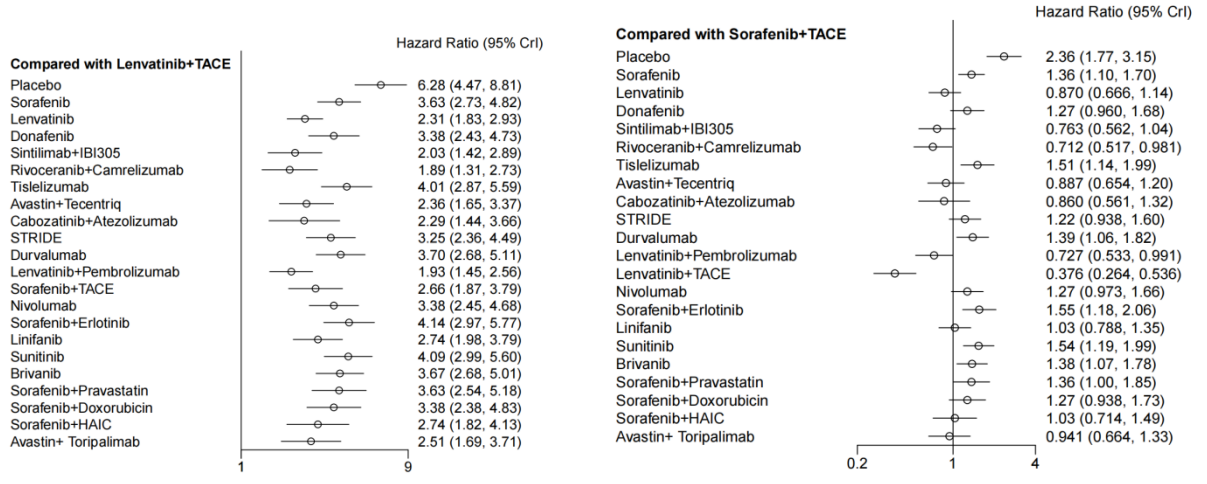
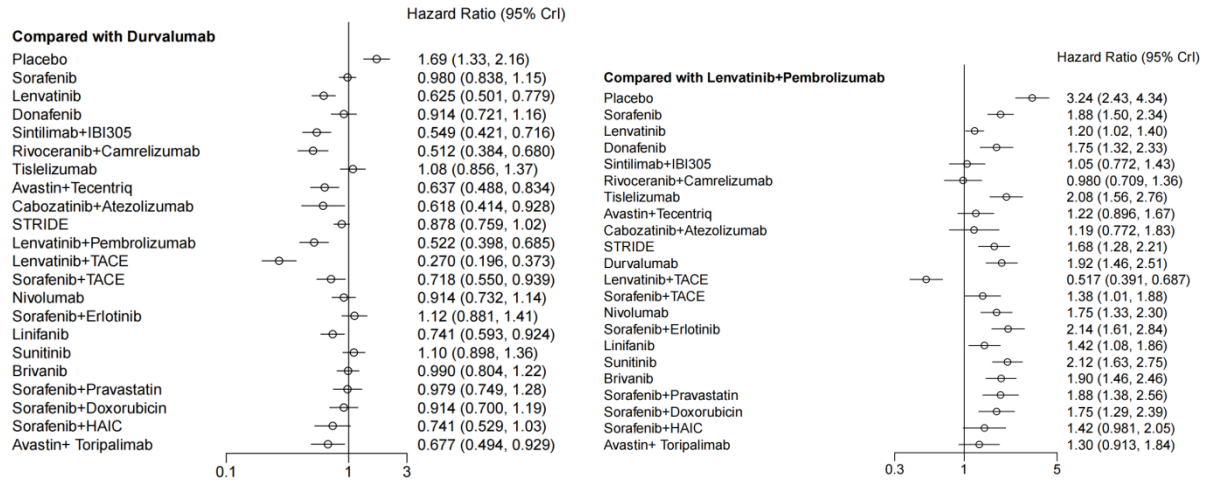
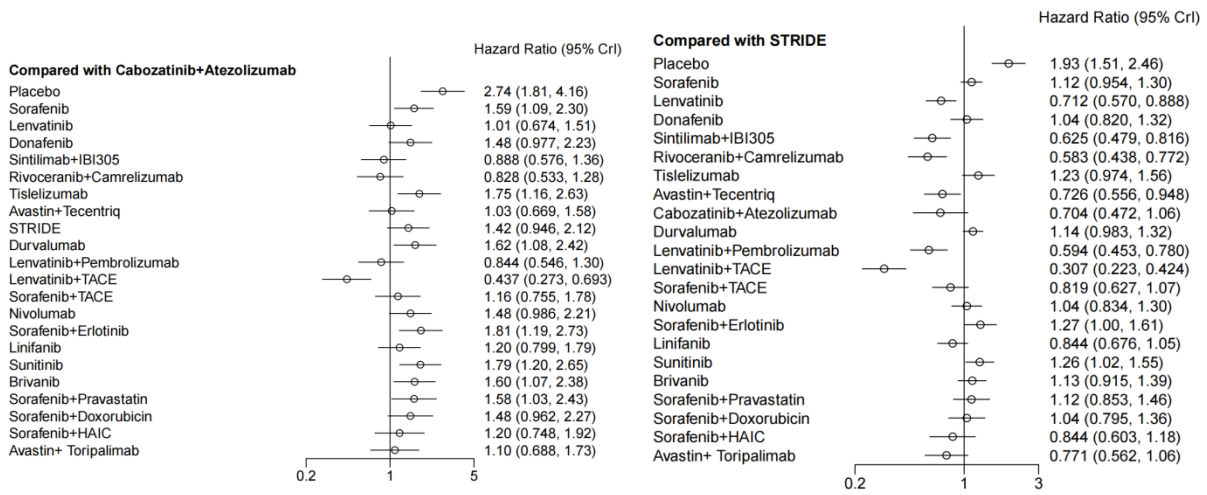
durvalumab; TACE: Lenvatinib plus transarterial chemoembolization.

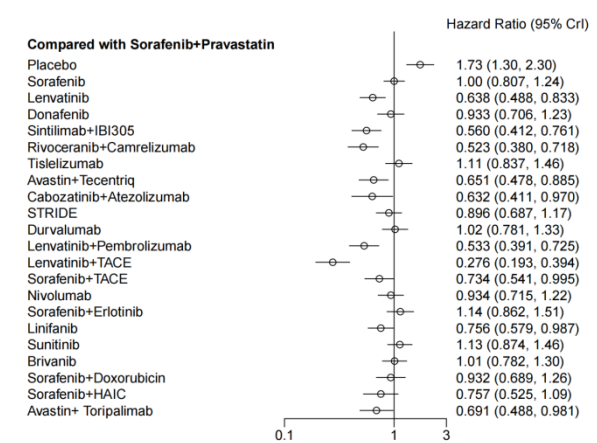
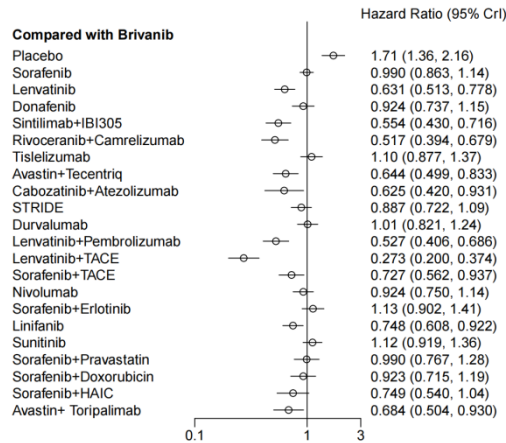
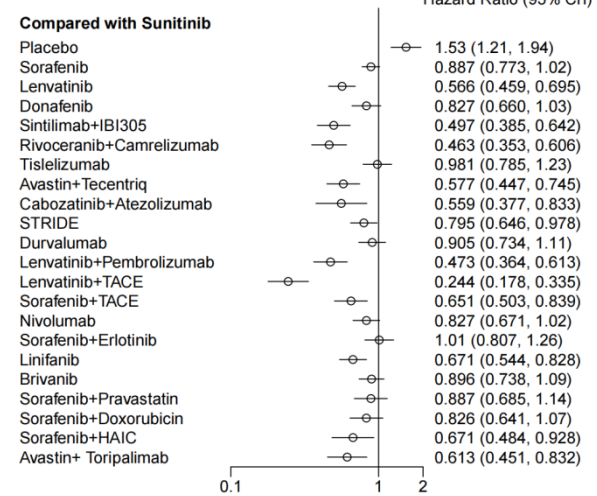
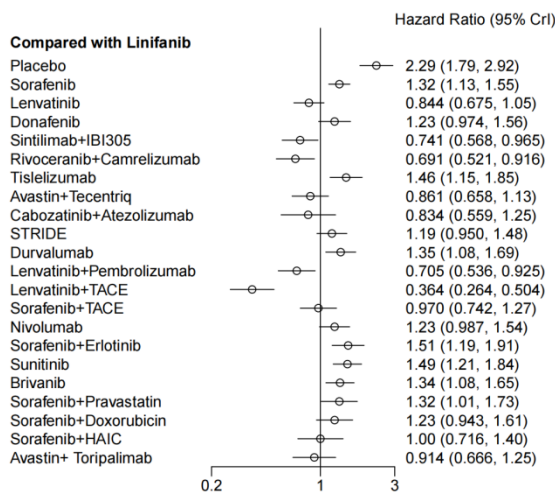
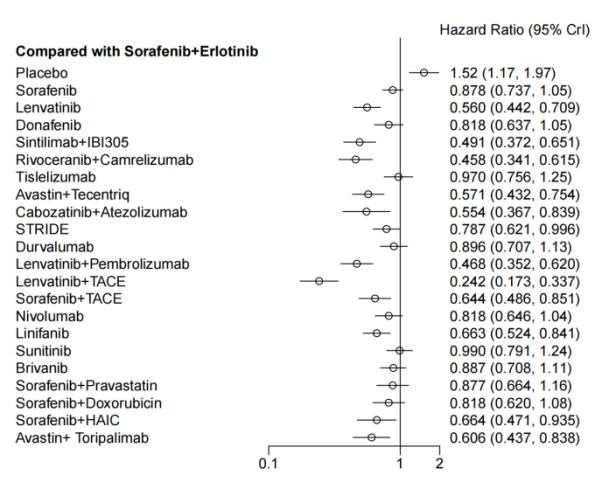
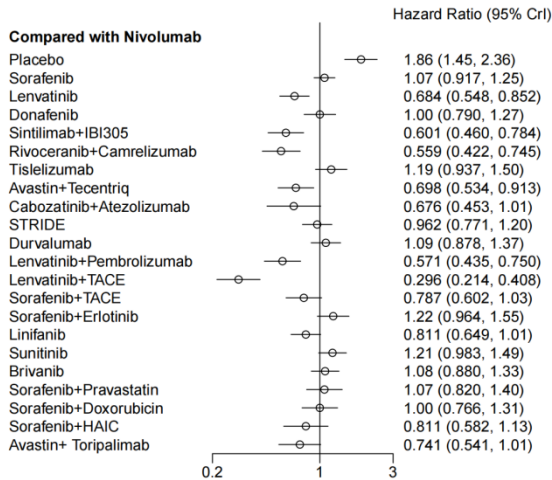


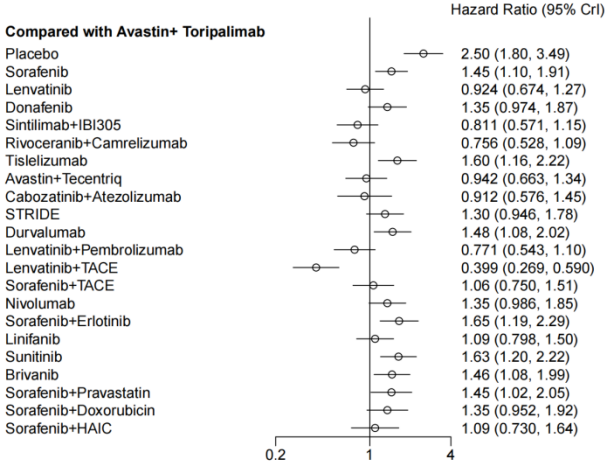
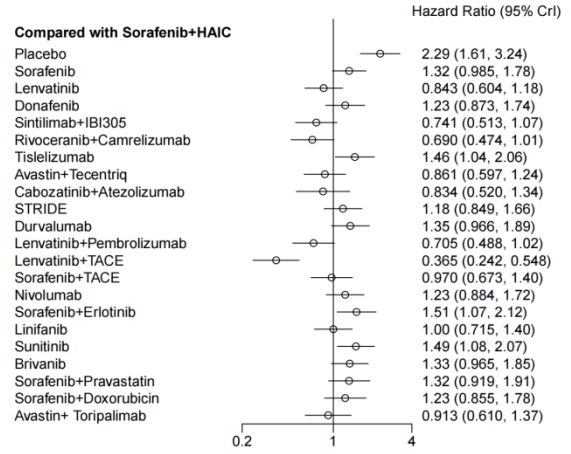
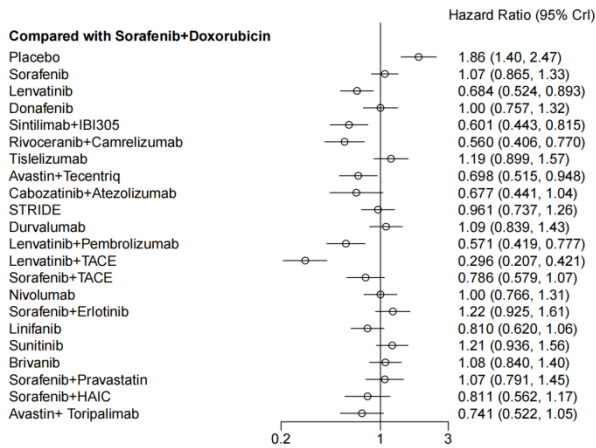
Supplementary Figure 3 Network plots of included studies. A: Network plot of progression-free survival; B: Network plot of overall survival; C: Network plot of adverse events of any grade; D: Network plot of grade ≥ 3 adverse events. AEs: Adverse events; OS: Overall survival; PFS: Progression-free survival.



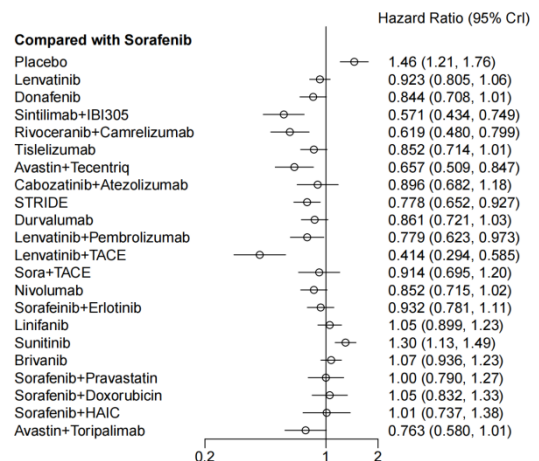
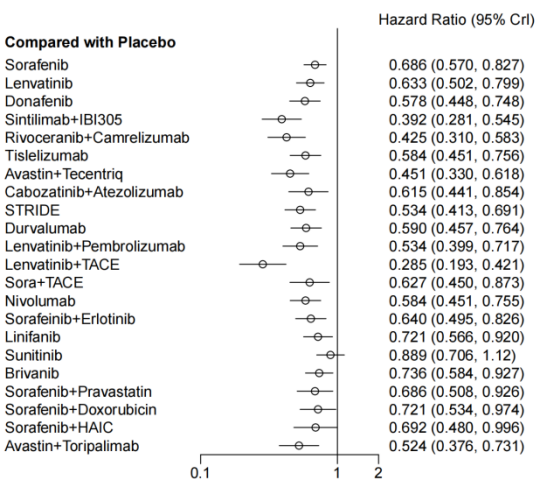


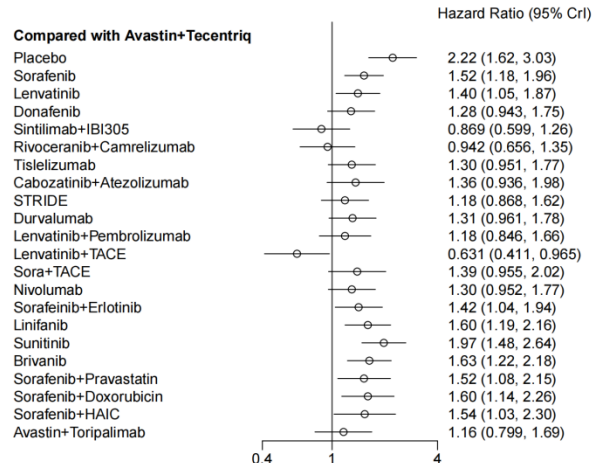
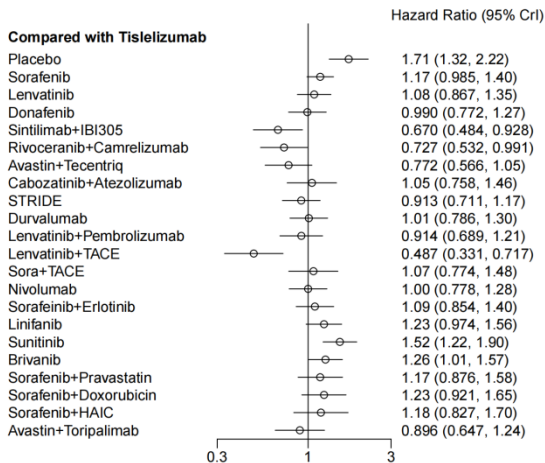
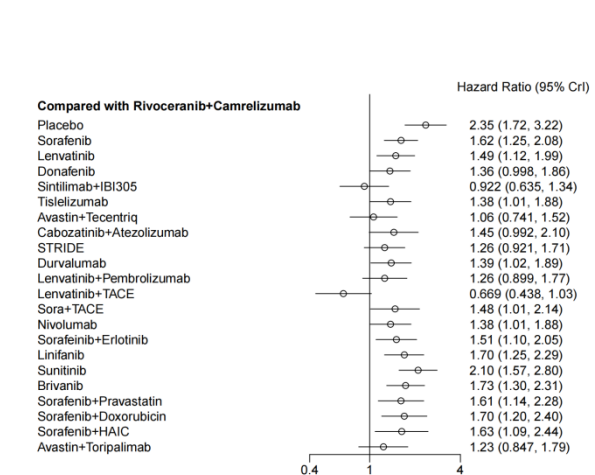
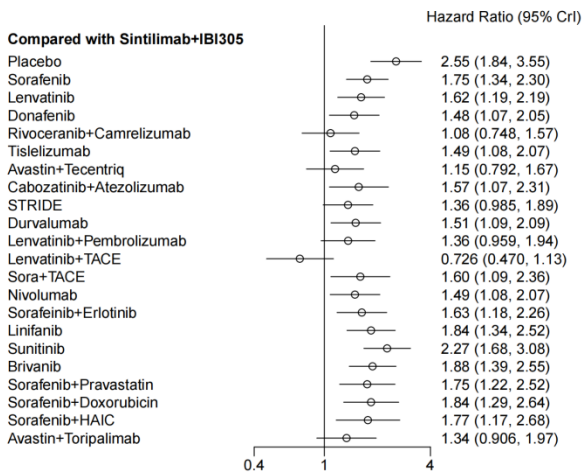
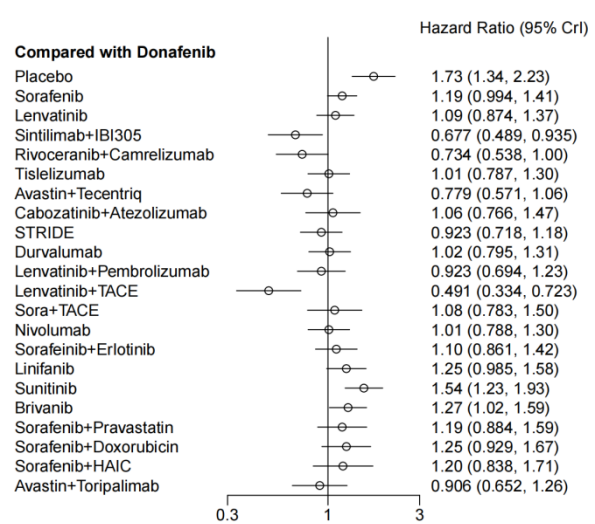
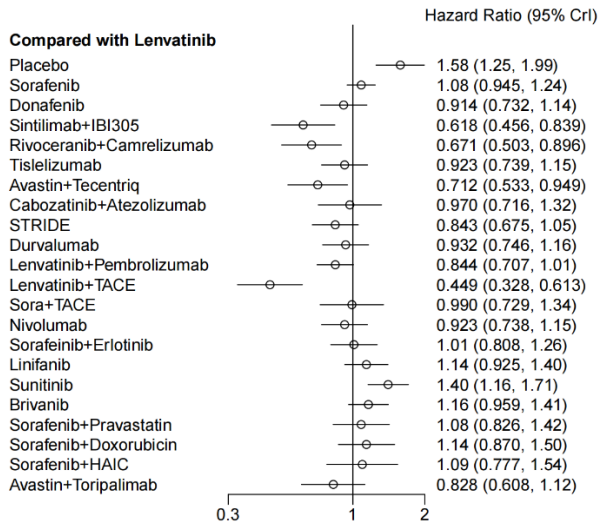


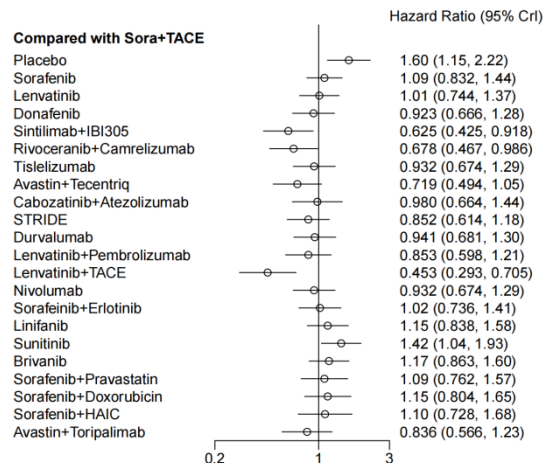
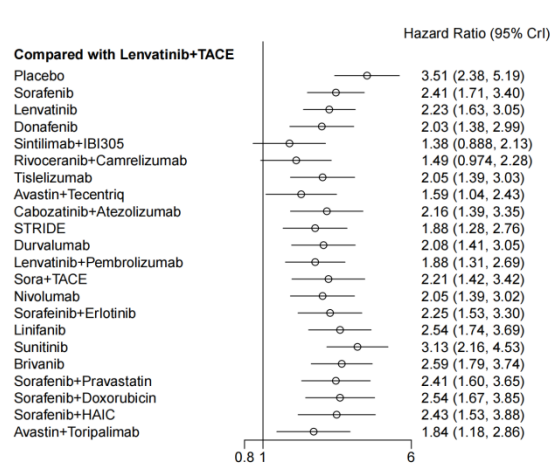
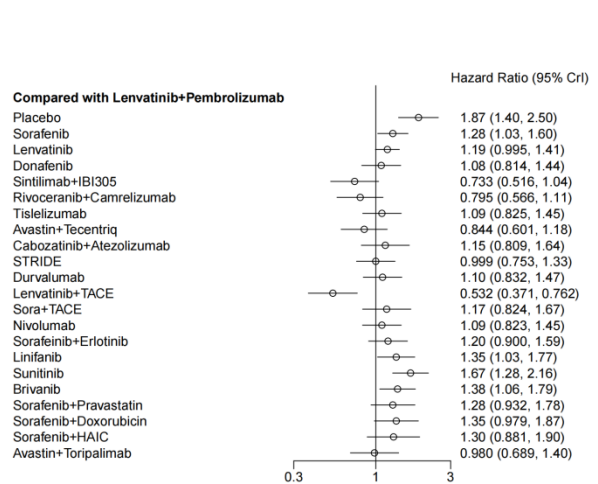
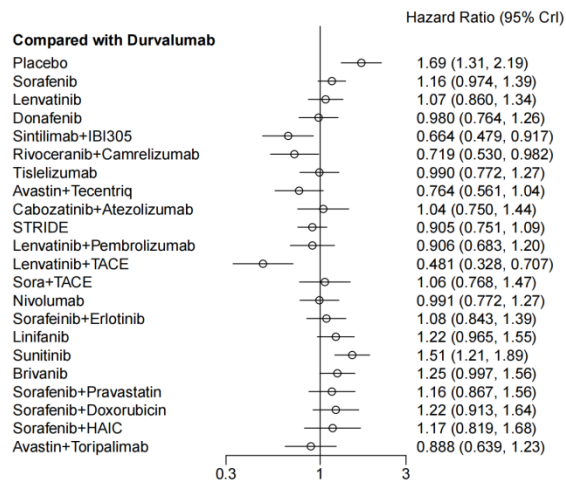
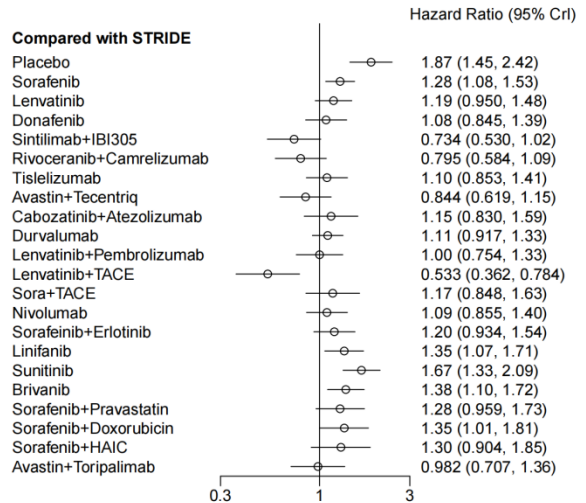
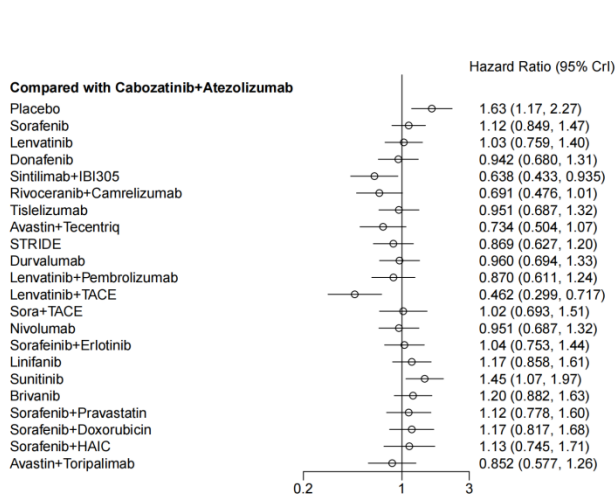


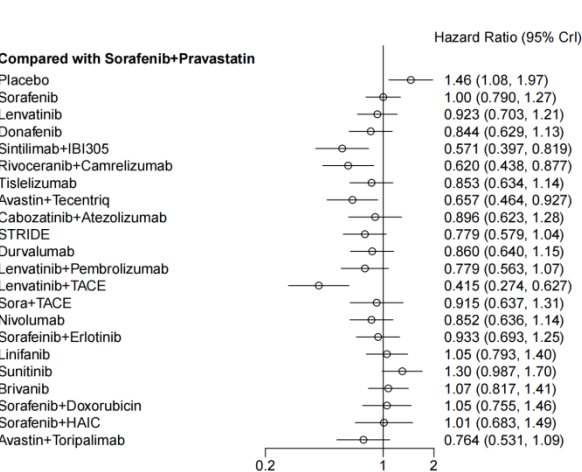
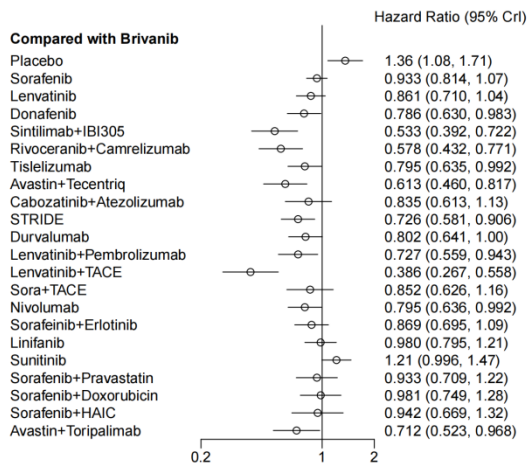
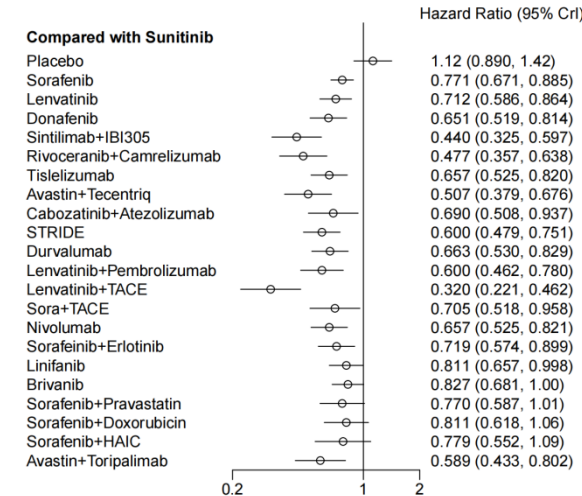
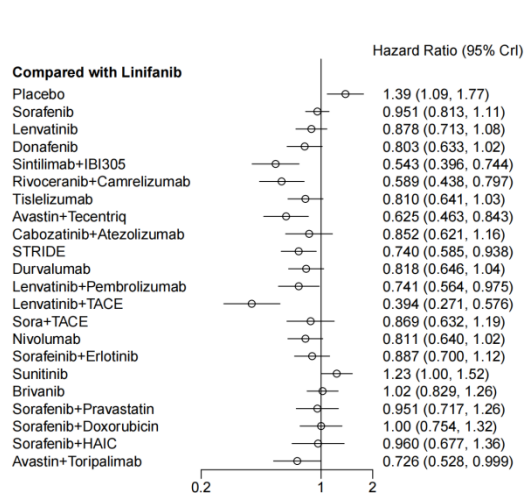
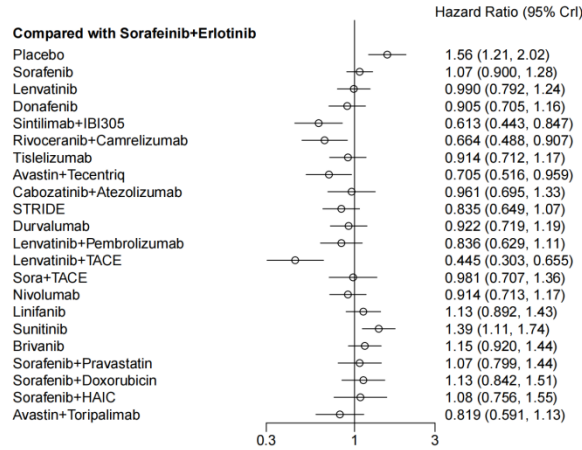
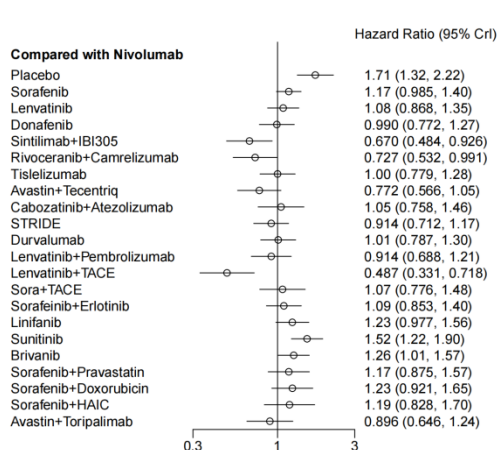


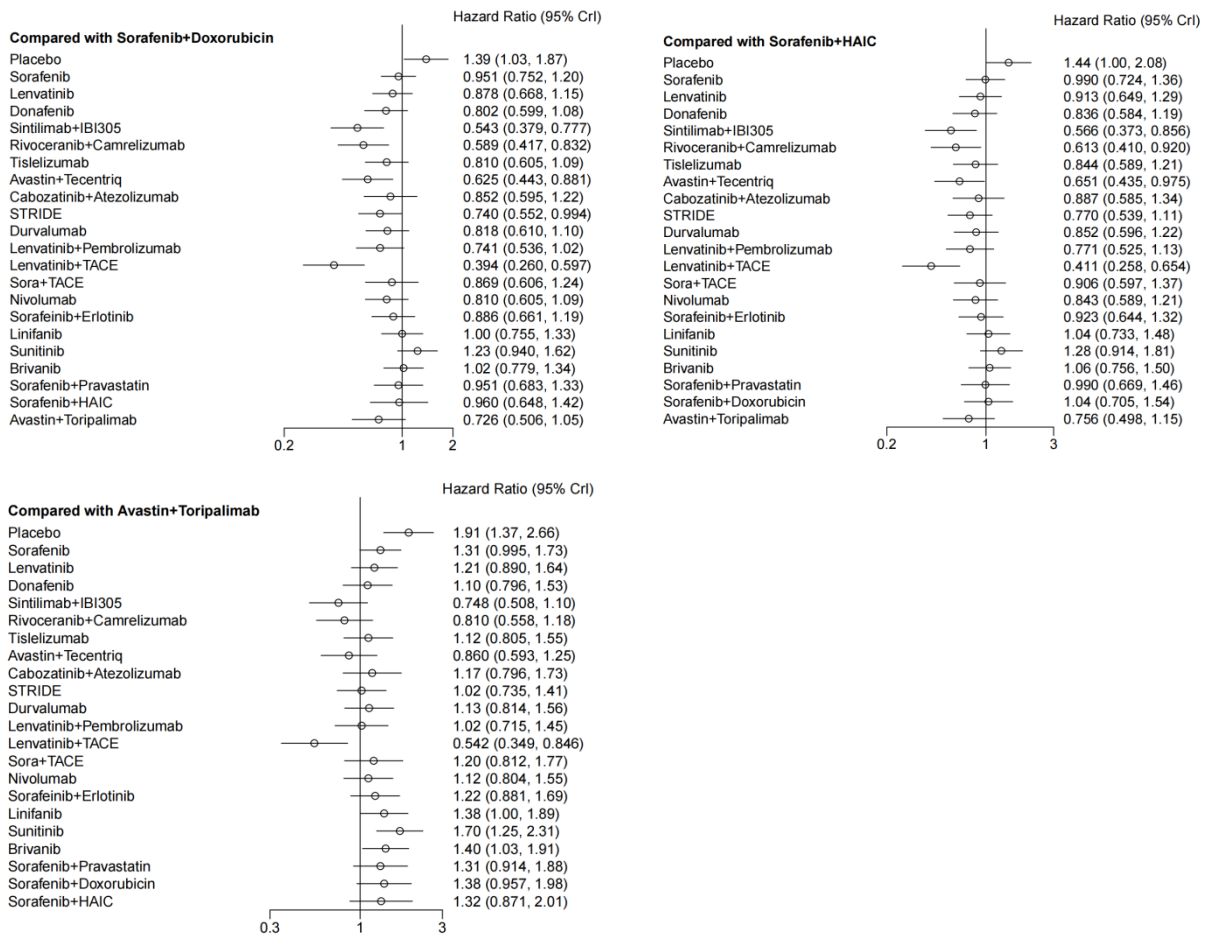
Supplementary Figure 4 Forest plots for pairwise comparisons of progression-free survival (PFS). STRIDE: Single tremelimumab regular-interval durvalumab; TACE: Transarterial chemoembolization; HAIC: Hepatic arterial infusion chemotherapy.



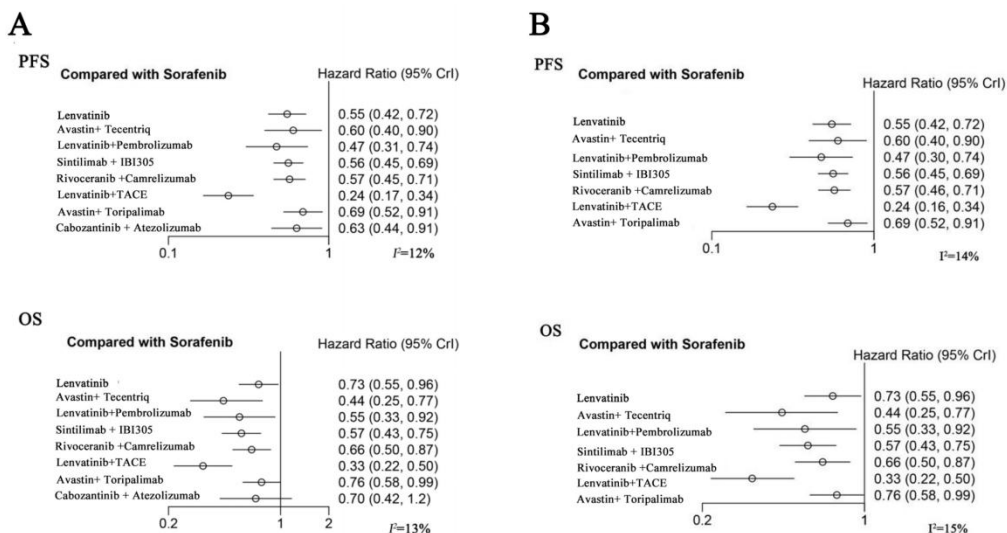








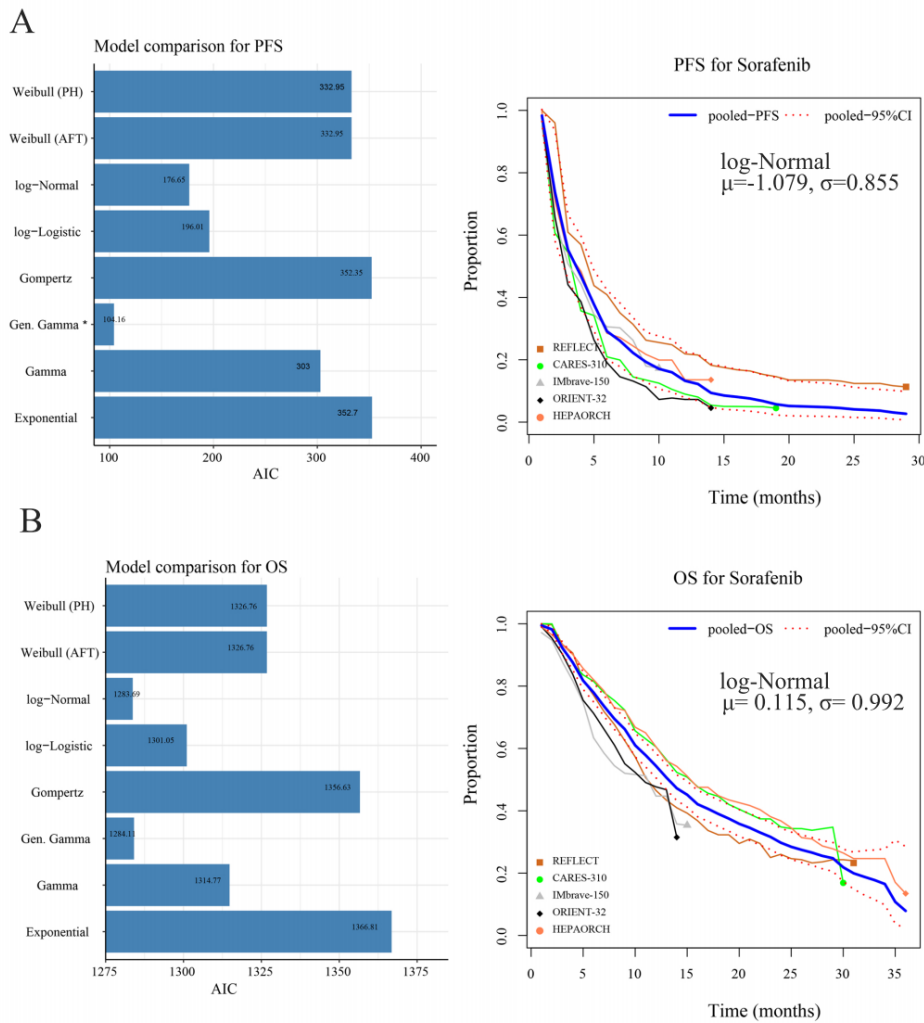
Supplementary Figure 5 Forest plots for pairwise comparisons of overall survival. HAIC: Hepatic arterial infusion chemotherapy; STRIDE: Single tremelimumab regular-interval durvalumab; TACE: Transarterial chemoembolization.



Supplementary Figure 6 Network meta-analysis results for the Chinese subgroup.

A: NMA forest plots included cabozantinib + atezolizumab; B: NMA forest plots excluded cabozantinib + atezolizumab. The I^2 statistics for heterogeneity are indicated

for each analysis. OS: Overall survival; PFS: Progression-free survival; TACE: Transarterial chemoembolization.



Supplementary Figure 7 Pooled survival curves and model fitting for sorafenib. A: Progression-free survival results; **B:** Overall survival results. $Q < 0$ is not available in TreeAge Pro; therefore, the generalized gamma distribution was not applied and was replaced with a log-normal distribution. OS: Overall survival; PFS: Progression-free survival.



Supplementary Figure 8 Tornado diagrams of one-way sensitivity analyses, using sorafenib (Sora) as the comparator. A + T: Atezolizumab plus bevacizumab; A + Tori: Avastin plus toripalimab; BSC: Best supportive care; Lenva: Lenvatinib; L + P: Lenvatinib plus pembrolizumab; L + T: Lenvatinib plus TACE; PD: Progressive disease; PFS: Progression-free survival; R + C: Rivoceranib plus camrelizumab; Sora: Sorafenib; S + I: Sintilimab plus IBI305; TACE: Transarterial chemoembolization.

Supplementary Table 1 Search strategy

Search strategy

PubMed	(((Carcinoma, Hepatocellular[Mesh]) OR (((((((((((((((Carcinomas, Hepatocellular[Title/ Abstract]) OR (Hepatocellular Carcinomas[Title/ Abstract])) OR (Hepatocellular	300
--------	--	-----

Carcinoma[Title/Abstract])) OR (Hepatoma[Title/Abstract])) OR
 (Hepatomas[Title/Abstract])) OR (liver cancer[Title/Abstract]))
 OR (Liver Cancers[Title/Abstract])) OR (Liver Cell
 Carcinoma[Title/Abstract])) OR (Carcinoma, Liver
 Cell[Title/Abstract])) OR (Carcinomas, Liver
 Cell[Title/Abstract])) OR (Cell Carcinoma,
 Liver[Title/Abstract])) OR (Cell Carcinomas,
 Liver[Title/Abstract])) OR (Liver Cell
 Carcinomas[Title/Abstract])) AND ((Therapeutics[Mesh]) OR
 (((Therapeutic[Title/Abstract]) OR (Therapy[Title/Abstract]))
 OR (Therapies[Title/Abstract])) OR (Treatment[Title/Abstract]))
 OR (Treatments[Title/Abstract])) AND ((Neoplasm
 Metastasis[Mesh]) OR (((unresectable[Title/Abstract]) OR
 (advanced[Title/Abstract])) OR (metastatic[Title/Abstract]))))
 AND ((Survival Rate[Mesh]) OR (((((((((((((((Rates,
 Survival[Title/Abstract]) OR (Rate, Survival[Title/Abstract])) OR
 (Survival Rates[Title/Abstract])) OR (Cumulative Survival
 Rate[Title/Abstract])) OR (Cumulative Survival
 Rates[Title/Abstract])) OR (Rate, Cumulative
 Survival[Title/Abstract])) OR (Rates, Cumulative
 Survival[Title/Abstract])) OR (Survival Rate,
 Cumulative[Title/Abstract])) OR (Survival Rates,
 Cumulative[Title/Abstract])) OR (Mean Survival
 Time[Title/Abstract])) OR (Mean Survival
 Times[Title/Abstract])) OR (Survival Time,
 Mean[Title/Abstract])) OR (Survival Times,
 Mean[Title/Abstract])) OR (Time, Mean
 Survival[Title/Abstract])) OR (Times, Mean
 Survival[Title/Abstract])))) Filters: Clinical Trial Results

No.	Query	Results
#56	#15 AND #20 AND #27 AND #43 AND #46 AND #52 AND #55	481
#55	#53 OR #54	139320
#54	'phase 3':ab,ti	62580
#53	'phase iii':ab,ti	78633
#52	#47 OR #48 OR #49 OR #50 OR #51	229620
#51	'event free survival':ab,ti	26999
#50	'event free survival':ab,ti	26999
#49	'event-free survival':ab,ti	27008
#48	'survival, progression-free':ab,ti	1917
#47	'progression free survival'/exp OR 'progression free survival'	204035
#46	#44 OR #45	2371119
#45	'clinical trial, phase iii':ab,ti	64
#44	'clinical trial'/exp OR 'clinical trial'	2371119
#43	#28 OR #29 OR #30 OR #31 OR #32 OR #33 OR #34 OR #35 OR #36 OR #37 OR #38 OR #39 OR #40 OR #41 OR #42	801453
#42	'times, mean survival':ab,ti	1
#41	'time, mean survival':ab,ti	8
#40	'survival times, mean':ab,ti	17
#39	'survival time, mean':ab,ti	71
#38	'mean survival times':ab,ti	815
#37	'mean survival time':ab,ti	7425
#36	'survival rate, cumulative':ab,ti	14
#35	'rates, cumulative survival':ab,ti	10
#34	'rate, cumulative survival':ab,ti	8
#33	'cumulative survival rates':ab,ti	2122
#32	'cumulative survival rate':ab,ti	3040
#31	'survival rates':ab,ti	128081
#30	'rates, survival':ab,ti	560
#29	'survival rate':ab,ti	170535

#28	'overall survival'/exp OR 'overall survival'	590443
#27	#21 OR #22 OR #23 OR #24 OR #25 OR #26	18257397
#26	'therapy'/exp OR 'therapy'	14885829
#25	'treatments':ab,ti	905921
#24	'treatment':ab,ti	7809680
#23	'therapies':ab,ti	646499
#22	'therapy':ab,ti	3435855
#21	'therapeutic':ab,ti	1942889
#20	#16 OR #17 OR #18 OR #19	1894727
#19	'metastasis'/exp OR 'metastasis'	1001704
#18	'metastatic':ab,ti	471138
#17	'advanced':ab,ti	886616
#16	'unresectable':ab,ti	44461
#15	#1 OR #2 OR #3 OR #4 OR #5 OR #6 OR #7 OR #8 OR #9 OR #10 OR #11 OR #12 OR #13 OR #14	288471
#14	'liver cell carcinoma'/exp OR 'liver cell carcinoma'	224410
#13	'liver cell carcinomas':ab,ti	67
#12	'cell carcinomas, liver':ab,ti	2
#11	'cell carcinoma, liver':ab,ti	40
#10	'carcinomas, liver cell':ab,ti	0
#9	'carcinoma, liver cell':ab,ti	7
#8	'liver cell carcinoma':ab,ti	463
#7	'liver cancer':ab,ti	42959
#6	'liver cancer':ab,ti	42959
#5	'hepatomas':ab,ti	2738
#4	'hepatoma':ab,ti	34854
#3	'hepatocellular carcinoma':ab,ti	176154
#2	'hepatocellular carcinomas':ab,ti	8309
#1	'carcinomas, hepatocellular':ab,ti	24

WOS

- #1 TS=(Carcinoma, Hepatocellular OR Carcinomas, Hepatocellular OR Hepatocellular Carcinomas OR Hepatocellular Carcinoma OR Hepatoma OR Hepatomas OR liver cancer OR Liver Cancers OR Liver Cell Carcinoma OR Carcinoma, Liver Cell OR Carcinomas, Liver Cell OR Cell Carcinoma, Liver OR Cell Carcinomas, Liver OR Liver Cell Carcinomas) 305829
- #2 TS=(Neoplasm Metastasis OR unresectable OR advanced OR metastatic) 2033395
- #3 TS=(Therapeutics OR Therapeutic OR Therapy OR Therapies OR Treatment OR Treatments) 7862725
- #4 TS=(Survival Rate OR Rates, Survival OR Rate, Survival OR Survival Rates OR Cumulative Survival Rate OR Cumulative Survival Rates OR Rate, Cumulative Survival OR Rates, Cumulative Survival OR Survival Rate, Cumulative OR Survival Rates, Cumulative OR Mean Survival Time OR Mean Survival Times OR Survival Time, Mean OR Survival Times, Mean OR Time, Mean Survival OR Times, Mean Survival) 478047
- #5 TS=(Clinical Trial, Phase III OR clinical trial) 843133
- #6 TS=(Progression-Free Survival OR Progression Free Survival OR Survival, Progression-Free OR Event-Free Survival OR Event Free Survival OR Survival, Event-Free) 117882
- #7 #6 AND #5 AND #4 AND #3 AND #2 AND #1 636

Cochrane

- #1 (Carcinoma, Hepatocellular):ab,ti,kw OR (Carcinomas, Hepatocellular):ab,ti,kw OR (Hepatocellular Carcinomas):ab,ti,kw OR (Hepatocellular Carcinoma):ab,ti,kw OR (Liver Cell Carcinoma):ab,ti,kw OR (Liver Cell Carcinomas):ab,ti,kw 8073
- #2 (unresectable):ab,ti,kw OR (advanced):ab,ti,kw OR (metastatic):ab,ti,kw 96390

#3	Therapeutics OR Therapeutic OR Therapy OR Therapies OR Treatment OR Treatments	1346721
#4	(Survival Rate):ab,ti,kw OR (Rates, Survival):ab,ti,kw OR (Rate, Survival):ab,ti,kw OR (Survival Rates):ab,ti,kw OR (Cumulative Survival Rate):ab,ti,kw OR (Cumulative Survival Rates):ab,ti,kw OR (Rate, Cumulative Survival):ab,ti,kw OR (Rates, Cumulative Survival):ab,ti,kw OR (Survival Rate, Cumulative):ab,ti,kw OR (Survival Rates, Cumulative):ab,ti,kw OR (Mean Survival Time):ab,ti,kw OR (Mean Survival Times):ab,ti,kw OR (Survival Time, Mean):ab,ti,kw OR (Survival Times, Mean):ab,ti,kw OR (Time, Mean Survival):ab,ti,kw OR (Times, Mean Survival):ab,ti,kw	79920
#5	(clinical trial) OR (Clinical Trial, Phase III)	1111844
#6	(Progression-Free Survival):ab,ti,kw OR (Progression Free Survival):ab,ti,kw OR (Survival, Progression-Free):ab,ti,kw OR (Event-Free Survival):ab,ti,kw OR (Event Free Survival):ab,ti,kw OR (Survival, Event-Free):ab,ti,kw	43450
#7	#1 AND #2 AND #3 AND #4 AND #5 AND #6	675(Cochrane reviews:4; Trials:671)

Supplementary Table 2 Characteristics of the included trials

Year	Ref.	Trial name	Regimen			Report edoutc omes	Territo ry	Chinese subgroup (T/C)
			Treatment arm	Compara tive arm	Sample size (T/C)			
2008	Llovet et al[19]	SHARP	Sorafenib	Placebo	297/302	1,2,3,4	Europe	NA
2009	Cheng et al[20]	ORIENTA L	Sorafenib	Placebo	150/76	1,2,3,4	Asia-Pacific	NA
2018	Kudo et	REFLECT	Lenvatinib	Sorafenib	478/476	1,2,3,4	Global	144/144

	al[33]		plus Erlotinib					
2015	Cainap et al[34]	NA	Linifanib	Sorafenib	510/519	1,2,3,4	Global	NA
2013	Cheng et al[35]	NA	Sunitinib	Sorafenib	530/544	1,2,4	Global	NA
2013	Johnson et al[36]	BRISK-FL	Brivanib	Sorafenib	577/578	1,2,3,4	Global	NA
2019	Jouve et al[37]	PRODIGE-11	Sorafenib plus Pravastatin	Sorafenib	162/161	1,2,	France	NA
2019	Abou-Alfa et al[38]	CALGB 80802	Sorafenib plus Doxorubicin	Sorafenib	180/176	1,2	Global	NA
2018	Kudo et al[39]	SILIUS	Sorafenib plus HAIC	Sorafenib	102/103	1,2	Japan	NA
2025	Shi et al[40]	HEPAORC H	Toripalimab plus Bevacizumab	Sorafenib	172/174	1,2,4	Asia	157/157 ¹

¹Chinese subgroup data not available, Asia subgroup data applied as substitution.

1: Progression-free survival/2: Overall survival/3: Adverse events/4: Adverse events ≥ 3 grade. NA: Not available; STRIDE: Single tremelimumab regular interval durvalumab; T/C: Treatment group /control group; TACE: Transarterial chemoembolization; HAIC, Hepatic arterial infusion chemotherapy.

Supplementary Table 3 Models comparison based on deviance information criterion values

Parameter	DIC (fixed)	DIC (random)	Model applied
Progression free survival	44.05	45.10	Fixed
Overall survival	44.01	45.44	Fixed
AEs	63.29	61.36	Fixed
AEs ≥ 3 grade	70.11	70.18	Fixed

AEs: Adverse events; DIC: Deviance information criterion.

Supplementary Table 4 Pairwise comparison results in base-case analysis

Treatment	Sorafenib b_ref (\$/QALY)	A+Tor i_ref (\$/QALY)	lenvatinib b_ref (\$/QALY)	R+C_ ref (\$/QALY)	S+I_r ef (\$/QALY)	L+P_r ef (\$/QALY)	A+T_ ref (\$/QALY)
Sorafenib	/	/	/	/	/	/	/
Avastin+Toripalimab	91582.91	/	/	/	/	/	/
Lenvatinib	49428.18	Dominated	Dominated	/	/	/	/
Rivoceranib+Camrelizumab	37198.84	Dominated	74954.45	/	/	/	/
Sintilimab+IBI305	58634.38	22277.38	64680.38	15606.864	/	/	/
Lenvatinib+Pembrolizumab	57054.28	33034.37	66086.26	45639.77	51384.53	/	/
Avastin+Tecentriq	59589.61	44533.94	34223.88	47026.17	50224.75	68578.50	/
Lenvatinib+TACE	37753.45	25087.69	74954.45	40511.91	17960.654	21026.06	5641.44

A+Tori: Avastin+ toripalimab; R+C: Camrelizumab plus rivoceranib; S+I: Sintilimab plus IBI305; L+P: Lenvatinib plus pembrolizumab; A+T: Atezolizumab plus bevacizumab; TACE: Transarterial chemoembolization; ref: Reference.

Supplementary Table 5 Scenario analysis

Drug	QALYs_PFS	QALYs_PD	QALYs_Total	Cost_PFS (\$)	Cost_PD (\$)	Cost_Total (\$)	ICER (\$/QALY)	Acceptability At WTP	Probability of being Optimal
------	-----------	----------	-------------	---------------	--------------	-----------------	----------------	----------------------	------------------------------

Scenario analysis results 1 Lenvatinib (SIMCERE, \$0.51/plate)

Soraf enib	0.35	0.72	1.07	1038 0.95	3611 2.17	46493. 12	Refer ence	Referen ce	0
A+To ri	0.5	0.89	1.39	3170 7.84	4409 1.81	75799. 65	91582. 91	0%	0.1%
Lenv atinib	0.73	0.73	1.46	9458. 99	3640 4.30	45863. 29	Domi nated	100%	0
R+C	0.61	0.96	1.57	1806 3.18	4702 9.36	65092. 54	37198. 84	55.1%	0
S+I	0.64	1.04	1.68	3130 8.96	5095 1.13	82260. 09	58634. 378	0.1%	0
L+P	0.88	0.97	1.85	2830 9.70	4737 2.24	75681. 94	37421. 56	87%	0
A+T	0.61	1.46	2.07	3511 9.31	7096 3.42	10608 2.73	59589. 61	0%	0
L+T	1.9	0.85	2.75	2893 8.21	4185 9.88	70798. 09	14467. 24	100%	99.9%

Scenario analysis results 2: Lenvatinib (ASK, \$1.36/plate)

Soraf enib	0.35	0.72	1.07	1038 0.95	3611 2.17	46493. 12	Refer ence	Referen ce	0
A+To ri	0.5	0.89	1.39	3170 7.84	4409 1.81	75799. 65	91582. 91	0%	0
Lenv atinib	0.73	0.73	1.46	5500. 92	3640 4.3	41905. 22	Domi nated	100%	0
R+C	0.61	0.96	1.57	1806 3.18	4702 9.36	65092. 54	37198. 84	55.5%	0
S+I	0.64	1.04	1.68	3130 8.96	5095 1.13	82260. 09	58634. 38	0.5%	0
L+P	0.88	0.97	1.85	2526 4.91	4737 2.24	72637. 15	33517. 99	78.0%	0

A+T	0.61	1.46	2.07	3511	7096	10608	59589.	0%	0
				9.31	3.42	2.73	61		
L+T	1.9	0.85	2.75	2115	4185	63019.	9837.2	100%	100%
				9.83	9.88	71	6		

Scenario analysis results 3: Lenvatinib (QINGFENG, \$1.5/plate)

Soraf enib	0.35	0.72	1.07	1038	3611	46493.	Refer ence	Referen ce	0
				0.95	2.17	12			
A+To ri	0.5	0.89	1.39	3170	4409	75799.	91582.	0%	0
				7.84	1.81	65	91		
Lenv atinib	0.73	0.73	1.46	5748.	3640	42152.	Domi nated	100%	0.3%
				45	4.3	75			
R+C	0.61	0.96	1.57	1806	4702	65092.	37198.	49.5%	0
				3.18	9.36	54	84		
S+I	0.64	1.04	1.68	3130	5095	82260.	58634.	0.1%	0
				8.96	1.13	09	38		
L+P	0.88	0.97	1.85	2545	4737	72827.	33762.	74.6%	0
				5.33	2.24	57	12		
A+T	0.61	1.46	2.07	3511	7096	10608	59589.	0%	0
				9.31	3.42	2.73	61		
L+T	1.9	0.85	2.75	2164	4185	63506.	10126.	100%	99.7%
				6.28	9.88	16	81		

Scenario analysis results 4: Lenvatinib (QILU, \$2.04/plate)

Soraf enib	0.35	0.72	1.07	1038	3611	46493.	Refer ence	Referen ce	0
				0.95	2.17	12			
A+To ri	0.5	0.89	1.39	3170	4409	75799.	91582.	0	0
				7.84	1.81	65	91		
Lenv atinib	0.73	0.73	1.46	6673.	3640	43077.	Domi nated	100%	0.5%
				05	4.30	35			
R+C	0.61	0.96	1.57	1806	4702	65092.	37198.	53.4%	0
				3.18	9.36	54	84		

S+I	0.64	1.04	1.68	3130	5095	82260.	58634.	0.2%	0
				8.96	1.13	09	38		
L+P	0.88	0.97	1.85	2616	4737	73538.	34673.	69.9%	0
				6.59	2.24	83	99		
A+T	0.61	1.46	2.07	3511	7096	10608	59589.	0	0
				9.31	3.42	2.73	61		
L+T	1.9	0.85	2.75	2346	4185	65323.	11208.	100%	99.5%
				3.30	9.88	18	37		

Scenario analysis results 5: Lenvatinib (BRILLIANT, \$3.65/plate)

Soraf enib	0.35	0.72	1.07	1038	3611	46493.	Refer ence	Referen ce	0
				0.95	2.17	12			
A+To ri	0.5	0.89	1.39	3170	4409	75799.	91582.	0%	0
				7.84	1.81	65	91		
Lenv atinib	0.73	0.73	1.46	9458.	3640	45863.	Dom inated	100%	0.7%
				99	4.30	29			
R+C	0.61	0.96	1.57	1806	4702	65092.	37198.	52.2%	0
				3.18	9.36	54	84		
S+I	0.64	1.04	1.68	3130	5095	82260.	58634.	0.1%	0
				8.96	1.13	09	38		
L+P	0.88	0.97	1.85	2830	4737	75681.	37421.	59.8%	0
				9.70	2.24	94	56		
A+T	0.61	1.46	2.07	3511	7096	10608	59589.	0%	0
				9.31	3.42	2.73	61		
L+T	1.9	0.85	2.75	2893	4185	70798.	14467.	100%	99.3%
				8.21	9.88	09	24		

Scenario analysis results 6: Lenvatinib (CHIATAI TIANQING, \$4.18/plate)

Soraf enib	0.35	0.72	1.07	1038	3611	46493.	Refer ence	Referen ce	0
				0.95	2.17	12			
A+To ri	0.5	0.89	1.39	3170	4409	75799.	91582.	0%	0
				7.84	1.81	65	91		

Lenv atinib	0.73	0.73	1.46	1038 3.59	3640 4.3	46787. 89	755.82	100%	0.3%
R+C	0.61	0.96	1.57	1806 3.18	4702 9.36	65092. 54	37198. 84	50.3%	0
S+I	0.64	1.04	1.68	3130 8.96	5095 1.13	82260. 09	58634. 38	0.3%	0
L+P	0.88	0.97	1.85	2902 0.96	4737 2.24	76393. 2	38333. 44	54.6%	0
A+T	0.61	1.46	2.07	3511 9.31	7096 3.42	10608 2.73	59589. 61	0	0
L+T	1.9	0.85	2.75	3075 5.23	4185 9.88	72615. 11	15548. 80	100%	99.7%

Scenario analysis results 7: Lenvatinib (KELUN, \$4.63/plate)

Soraf enib	0.35	0.72	1.07	1038 0.95	3611 2.17	46493. 12	Refer ence	Referen ce	0
A+To ri	0.5	0.89	1.39	3170 7.84	4409 1.81	75799. 65	91582. 91	0%	0
Lenv atinib	0.73	0.73	1.46	1116 2.58	3640 4.3	47566. 88	2753.2 3	100%	1.1%
R+C	0.61	0.96	1.57	1806 3.18	4702 9.36	65092. 54	37198. 84	54.1%	0
S+I	0.64	1.04	1.68	3130 8.96	5095 1.13	82260. 09	58634. 38	0.2%	0
L+P	0.88	0.97	1.85	2962 0.20	4737 2.24	76992. 44	39101. 69	48.6%	0
A+T	0.61	1.46	2.07	3511 9.31	7096 3.42	10608 2.73	59589. 61	0%	0
L+T	1.9	0.85	2.75	3228 6.11	4185 9.88	74145. 99	16460. 04	100%	98.9%

A+Tori: Avastin+ toripalimab; R+C: Camrelizumab plus rivoceranib; S+I: Sintilimab plus IBI305; L+P: Lenvatinib plus pembrolizumab; A+T: Atezolizumab plus

bevacizumab; L+T: Lenvatinib plus ransarterial chemoembolization; QALY: Quality-adjusted life-years; ICER: Incremental cost-effectiveness ratio.